

Apartment Ljuba

Region: Dubrovnik City **Sleeps:** 4

Overview

Apartment Ljuba, a recently renovated two-bedroom loft apartment, is a delightful retreat set in the charming Pile area, just a five-minute stroll from the historic Old Town of Dubrovnik. Boasting a lovely private terrace, guests can bask in the warmth of summer days, indulging in relaxation and tranquillity.

Situated on the second floor of a traditional stone residential house, the apartment offers two inviting bedrooms with comfortable double beds, a modern bathroom with a refreshing shower, and a cosy living room with a dining area seamlessly integrated with a well-equipped kitchen. Gazing through the bedroom and living room windows, guests are treated to picturesque views of the captivating Lovrijenac fortress and the university garden, adding to the apartment's allure and charm.

The interior decor exudes brightness and modernity, complemented by the gentle rustling of trees outside, creating a soothing ambience that instantly makes you feel at home. Embracing the natural surroundings and capturing the essence of the historic city, this welcoming space allows visitors to settle in effortlessly, immersing themselves in the true essence of Dubrovnik.

Accessing the apartment is easy via two flights of stairs from the street to the property entrance gate. Stepping onto the lovely terrace, adorned with an outdoor dining table and chairs, guests are greeted by an inviting space that beckons them to unwind. A few more steps lead to the apartment entrance doors, providing an exclusive and peaceful haven.

Conveniently situated within a short walking distance, the apartment allows easy exploration of all the major attractions, beaches, restaurants, and shops of Dubrovnik.



Sulic Beach, a mere three-minute stroll away, offers a pleasant spot for seaside enjoyment, while the famous Banje Beach awaits at a leisurely fifteen-minute walk. For grocery needs, the nearest store is conveniently located at Pile Gate, the main entrance to the captivating Old Town, just a four-minute walk from the apartment.

With its strategic location, modern comforts, and serene terrace, Apartment Ljuba ensures a delightful stay in Dubrovnik, immersing guests in this enchanting city's rich cultural heritage and natural beauty.

Facilities

City Homes & Apartments • Historical Sites • Walk to Village • Air-Con • Romantic • Special Offer • Has Discount • Pets on Request • <1hr to Airport • Washing Machine • Coffee Machine • Hairdryer • Tourist Towns & Villages • TV • Microwave • Safety Deposit Box • Heating • Aquarium • Kid-friendly museum • Kid-friendly excursions • Water excursions/Boat trips • Ideal for Babies & Toddlers

Interior & Grounds

The Apartment

Apartment Ljuba, a recently renovated two-bedroom loft apartment, is a delightful retreat set in the charming Pile area, just a five-minute stroll from the historic Old Town of Dubrovnik.

Interior

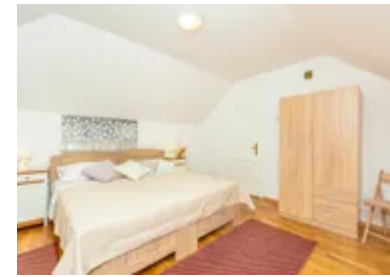
- Living room with dining area
- Well equipped kitchen
- Bedroom 1: Double bed
- Bedroom 2: Double bed
- Family bathroom

Exterior

- Terrace
- Outdoor dining table
- Free on-street parking

Additional Facilities

- Wi-Fi
- Air-conditioning
- Iron
- Washing machine
- Hair dryer



Location & Local Information

Apartment Ljuba enjoys a prime location in the picturesque Pile area of Dubrovnik, making it an ideal accommodation choice for travellers seeking to immerse themselves in the city's vibrant atmosphere while being within easy reach of all the main attractions.

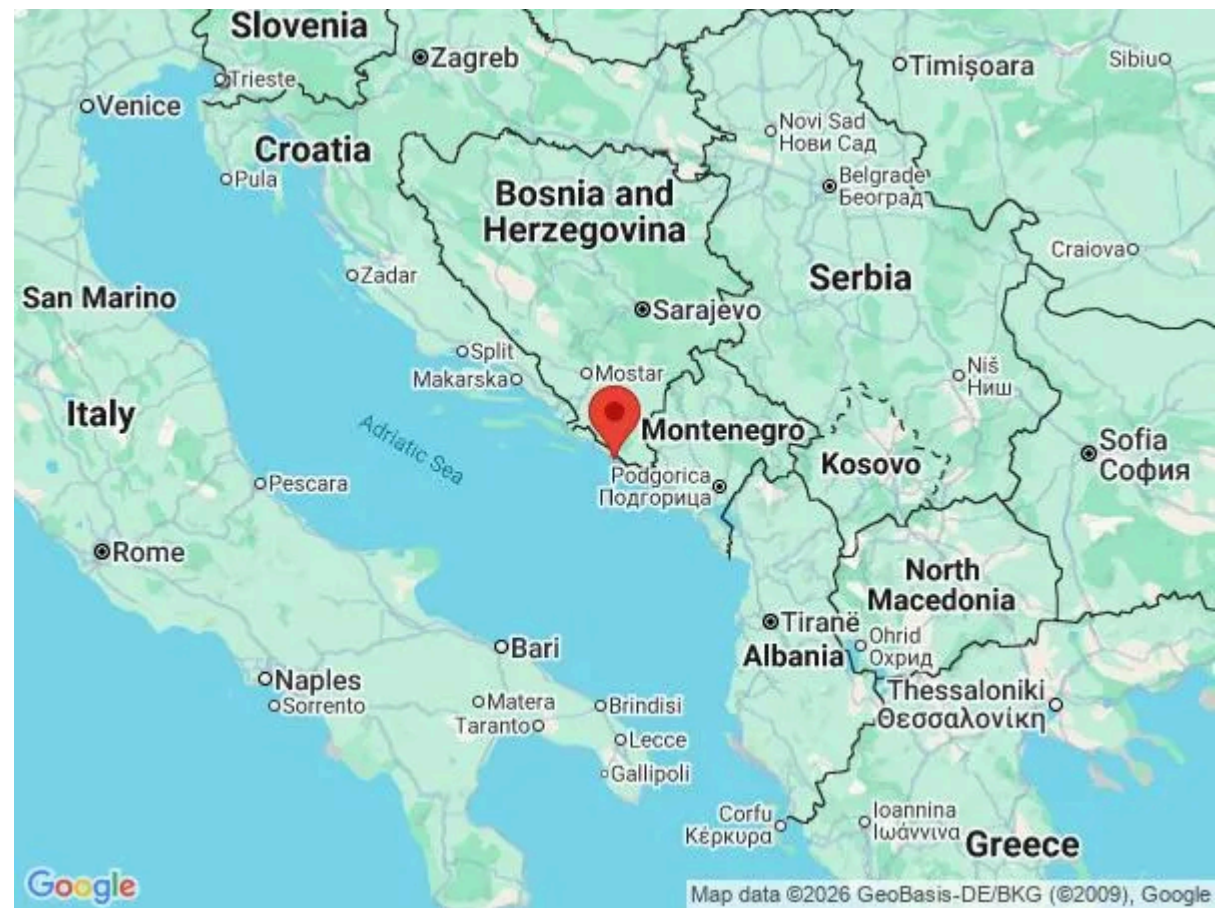
Situated just five minutes from the historic Old Town, the apartment grants guests easy access to Dubrovnik's rich cultural heritage and iconic landmarks. Within a short stroll, visitors can find themselves amidst the grandeur of the ancient city walls, exploring charming, cobbled streets and discovering historical treasures such as the renowned Lovrijenac fortress and the nearby university garden.

The apartment's enchanting surroundings offer captivating views, with the Lovrijenac fortress and lush greenery providing a delightful backdrop visible from the bedroom and living room windows. This scenic vista adds to the apartment's allure, inviting guests to revel in the timeless beauty of Dubrovnik.

To reach the apartment, guests ascend two flights of stairs from the street to the property entrance gate, leading them to a lovely private terrace that serves as a peaceful oasis for relaxation and contemplation. The terrace, adorned with an outdoor dining table and chairs, offers a beautiful spot to savour alfresco meals, basking in the pleasant Mediterranean climate.

With free parking available on the street below the apartment, guests can conveniently access a secure space for their vehicles during their stay. The ease of access and proximity to essential amenities, such as grocery stores, make Apartment Ljuba a practical and convenient choice for guests.

Moreover, the location provides effortless access to the beautiful nearby beaches. Sulic Beach, a short three-minute walk away, invites visitors to bask in the sun and dip into the azure waters of the Adriatic Sea. For a more vibrant beach experience, the famous Banje Beach is



reachable within a leisurely fifteen-minute stroll from the apartment.

Apartment Ljuba's strategic location, nestled between the Old Town's historical marvels and the alluring coastline, offers an unforgettable stay, enabling guests to embrace the full essence of Dubrovnik. Whether exploring the city's rich heritage, savouring local cuisine, or relaxing on nearby beaches, the apartment serves as an idyllic base for a memorable Dubrovnik experience.

Local Amenities

Nearest Airport	Dubrovnik Airport (21 km)
Nearest Supermarket	Studenac Market (450 m)
Nearest Beach	Šulić Beach (190 m)
Sightseeing	Fort Lovrijenac (400 m)
Sightseeing	King's Landing Dubrovnik (750 m)
Sightseeing	Church of St. Blaise (800 m)

What we love

- Apartment Ljuba enjoys a central position in the Pile area, just a five-minute walk from the picturesque Old Town of Dubrovnik
- The apartment boasts captivating views of the iconic Lovrijenac fortress and the lush university garden
- A lovely private terrace awaits guests, featuring outdoor dining facilities, creating a tranquil and inviting space to relax and unwind

What you should know...

- Free private parking is available. However, advance notice on arrival with a car is necessary
- The apartment is located on the second floor of the building with no lift
- Please note, if you are arriving by car, you must provide the supplier with your license plate details prior to arrival due to traffic restrictions in Dubrovnik.

Terms & Conditions

- **Security deposit:** €150 charged to client's credit card by the owner before/upon arrival and refunded two weeks after departure, subject to full inspection.
- **Arrival time:** 15:00 - 02:00
- **Departure time:** 10:00
- **Energy costs included?:** Yes, included in the rental price.
- **Linen & towels included?:** Yes, included in the rental price.
- **Pets welcome?:** On request only and with prior agreement with the owner. If accepted, a pet supplement of €10 per pet per day will apply (paid locally).
- **Other Ts and Cs:** Please note, if you are arriving by car, you must provide the supplier with your license plate details prior to arrival due to traffic restrictions in Dubrovnik.
- **End of stay cleaning available?:** Yes. However, guests are required to leave the accommodation clean, tidy and in the same condition as on their arrival. Any extra cleaning, laundry, maintenance and/or rubbish disposal required will be charged against the security deposit.
- **Smoking Allowed?:** Smoking & Vaping are not permitted.
- **Heating costs included?:** Yes, included in the rental price.
- **Tax:** Tourist Taxes included in the rental price.
- **Internet access?:** Wi-Fi internet access included,