

Apartment Davi

Region: Portugal Sleeps: 5

Overview

Apartment Davi is a bright and modern two-bedroom space ideally located just 350 metres from Campanhã railway, metro, and bus station in Porto. Perfect for families or groups of up to five, the apartment features an open-plan living area with floor-to-ceiling glass doors that lead to a quiet balcony. The design is clean and contemporary, with a sleek kitchen tucked behind a stylish partition, allowing for easy meal preparation without disrupting the living space.

Both bedrooms are filled with natural light and offer a calm, uncluttered atmosphere for rest and relaxation. Surrounded by local restaurants and mini-markets, and with excellent public transport just a short walk away, Apartment Davi makes exploring Porto and its surroundings simple and convenient. It's a well-appointed retreat for travellers looking for comfort and style in the heart of the city.

Facilities

Maid Service Available • Wi-Fi/Internet • Special Offer • Air-Con • Beach Nearby • Has Discount • Great Value • Easy By Train • Cots (Cribs) • Lift • City Homes & Apartments • Kid-friendly museum • Kid-friendly excursions • Transfers Available • No car required • Breakfast Available • Ideal for Babies & Toddlers • Ideal for Kids • Ideal for Teens • Pets on Request • Walk to Restaurant • <1hr to Airport • Washing Machine • Tumble Dryer • Dishwasher • Microwave • Coffee Machine • Hairdryer • Satellite TV • TV • High Chair(s) • Parking Space • Wine Tasting • Outdoor Pursuit & Activities • Tourist Towns & Villages • Historical Sites



Interior & Grounds

Interior

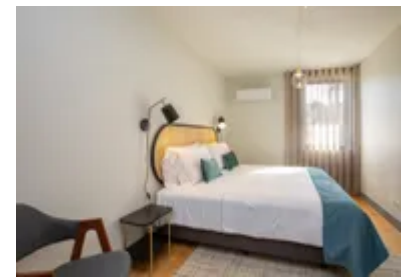
- Living room with sofa bed
- Fully equipped kitchen
- Dining area
- Master bedroom: Twin beds
- Bedroom 2: Twin beds
- Bathroom

Exterior

- Balcony

Additional Facilities

- Wi-Fi
- Air-conditioning
- Garage



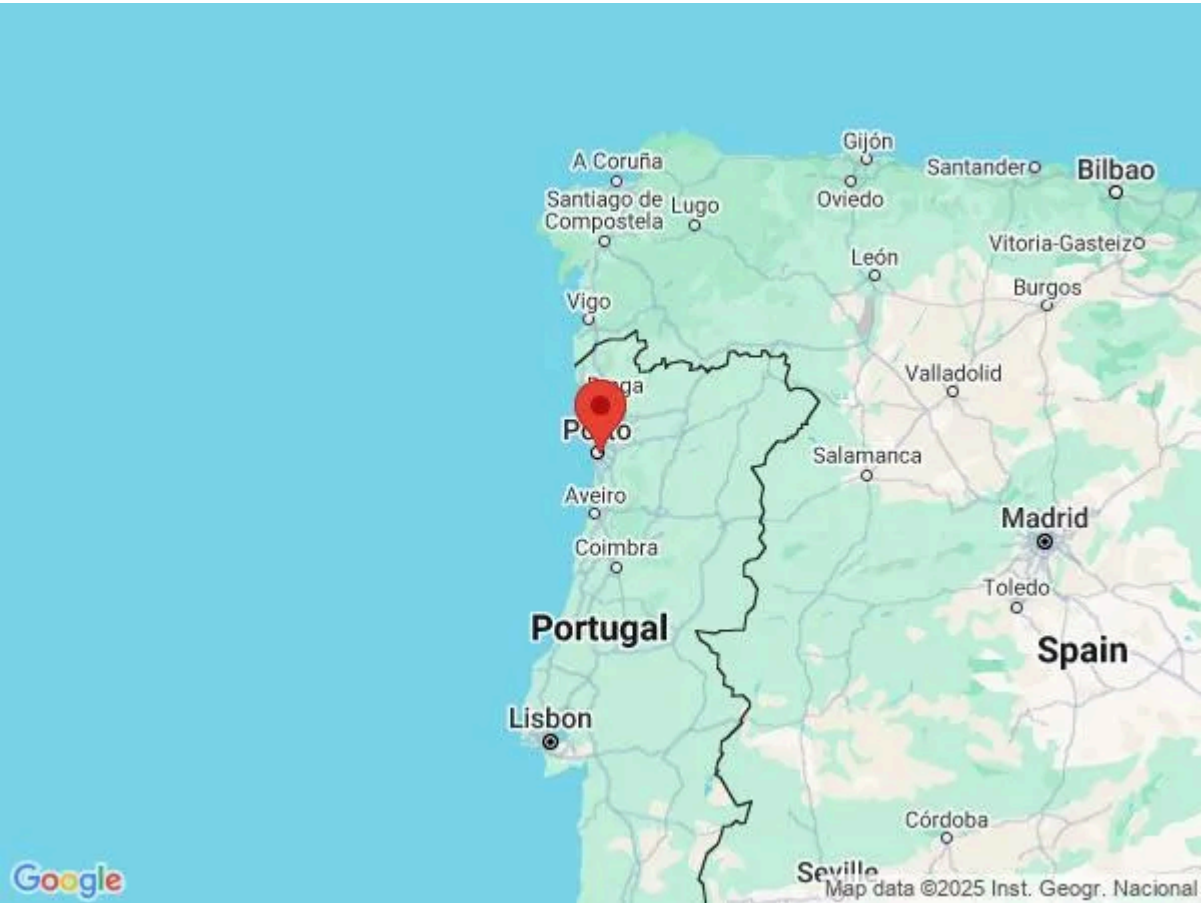
Location & Local Information

Apartment Davi enjoys a central location near Campanhã railway station, placing guests in the heart of Porto's energetic and well-connected urban centre. Just 350 metres from train, metro, and bus links, it offers quick and easy access to the city's top sights—from the historic Ribeira district and Clerigos Tower to day trips to Braga or Guimarães. Surrounded by cafés, markets, and local culture, it's an ideal base for travellers looking to experience the rhythm of Porto.

The city itself is a compelling blend of old-world charm and contemporary energy. Stroll through narrow streets lined with tiled façades, cross the Dom Luís I Bridge for sweeping views, or visit the iconic Livraria Lello. Porto's riverside location, vibrant arts scene, and celebrated wine cellars in Vila Nova de Gaia offer something for every interest. From cultural landmarks to culinary delights, Porto delivers a rich and memorable experience, and Apartment Davi puts it all within reach.

Local Amenities

Nearest Airport	Francisco Sá Carneiro Airport (18 km)
Nearest Bar/Pub	Armazém da Cerveja (1 km)
Nearest Beach	Praia do Carneiro (12 km)
Nearest Restaurant	Tia Orlanda - Sabores Moçambicanos (120 m)
Nearest Supermarket	Minipreço (400 m)
Nearest Train Station	Campanhã Underground Station (350 m)
Sightseeing	Ponte Luís I (2 km)



What we love

- Floor-to-ceiling sliding glass doors allow an abundance of natural light to flood the space but also lead to a serene balcony!
- The neutral colour palette and minimalist decor provide a blank canvas for you to unwind and truly immerse yourself in the essence of Porto
- Located close to the Campanhã train, metro, and bus station offers excellent transportation options to explore the beautiful city of Porto and its surrounding areas!

What you should know...

- There is a lift in the building for convenience accessing the apartment
- The building has a garage where vehicles can be parked
- There is a sofa bed in the living area for alternative sleeping arrangement

Terms & Conditions

- **Security deposit:** €200 charged to client's credit card before arrival and refunded two weeks after departure, subject to full inspection.
- **Arrival time:** 3 pm. Late check-in possible at an extra cost of €30 per booking, please enquire.
- **Departure time:** 11 am. Late check-out possible at an extra cost of €30 per booking, please enquire.
- **Energy costs included?:** Yes, included in the rental price.
- **Linen & towels included?:** Yes, included in the rental price.
- **Pets welcome?:** On request only and with prior agreement with the owner. If accepted, a pet supplement of €40 per booking will apply (paid locally).
- **Other Ts and Cs:** Please note that the use of a garage costs €15 a night.
- **Changeover day:** Flexible.
- **End of stay cleaning available?:** Not included in the rental price, extra €52 to be paid with the balance due.
- **Smoking Allowed?:** Smoking & Vaping are not permitted.
- **Minimum stay:** 2 nights. All other durations on request.
- **Heating costs included?:** Not available on this property.
- **Tax:** Porto Tourist Tax of €2.00 a night for guests over 13. This is to be paid locally.
- **Internet access?:** Wi-Fi internet access included.