

Apartment Patrick

Region: 3 Valleys Sleeps: 6

Overview

Summer might be sensational, but for lovers of the much-maligned winter months, we welcome you to a truly indulgent winter paradise. Snuggled amongst the piercing French Alps, you'll find Apartment Patrick in the enchanting Courchevel. There are two primary types of visitors to this sublime area – those who seek solitude and serenity and those who seek adrenaline and adventure. You may very well wish to merge the two.

This beguiling property is a wonderful mix of quaint and traditional Alpine charisma and practical modernity, making it the ideal place to spend your trip. There's also something truly magical about the natural beauty of the area, marking it out as a real escape from reality. The feel is that of eternal Christmas with its exhilarating sense of anticipation and expectation. Very much like something from a fairy tale, Courchevel is a vast wooded area where you can truly escape the hustle and bustle of the wider world and ensconce yourself in a serene snow globe.

Your property is also perfectly poised, offering access to shops and slopes, so whatever your entertainment preference, it's all at your disposal. Ideal for a group of six adults, you can spread out across three double bedrooms, one of which boasts its own ensuite bathroom. The living room is a grand but warming space which includes a lounge, dining area and kitchen with counter space. It's the ideal space to make the most of the light thanks to the large windows and balcony that faces both south and west. This is also the ideal area for communal living whether you want to enjoy a meal together, cuddle up on the cream sofa, watch a film or enjoy the views from the balcony.

You'll find elegant touches of winter throughout – piled wooden logs, evergreen wreathes, fluffy cream pillows,



stonework and striking artwork. The modern touches that thread the house include lighting that mimics the sprawl of stars across the sky, artistic lighting, elegant seating, asymmetrical bowls, hangings, and jaunty items that create a beautiful but thoroughly practical space.

The bedrooms are the ideal place to rest and recuperate after a day on the slopes or shopping. Part the curtains to see the sultry forest beyond and get cosy in this minimalist but indulgent haven. Enjoy the features of your warmly lit bathroom and ease those tired muscles after a day of adventuring.

Get ready for charm, relaxation, beauty and adrenaline. Whatever your preference, you'll find it all and more here.

Facilities

Ski-In/Ski-Out • Ski Lift Nearby • Walk To Slopes • Self-Catered • Skiing • Ideal for Kids • Ideal for Teens • Cots (Cribs) • Wow Factor • Modern • Walk to Restaurant • Wi-Fi/Internet • Lakes and Mountains • Chalet Apartment • Outstanding Landscapes • Outdoor Pursuit & Activities • Tourist Towns & Villages • TV • Dishwasher • Microwave • Heating • Transfers Available • Ideal for Babies & Toddlers • High Chair(s)

Interior & Grounds

Apartment Interior

- Living area
- Dining area
- TV lounge
- Fireplace
- Semi-open fitted kitchen
- Double bedroom: 1 double bed, ensuite bathroom with bathtub, toilet, single hand basin.
- Double bedroom x2: wardrobe, 1 double bed
- Independent bathroom x2: Double hand basin, toilet, double Italian shower

Outside Grounds

- Balcony

Additional Facilities

- Bathroom products
- Reception in agency
- TV
- Dishwasher
- Freezer
- Fridge
- TV
- Wi-Fi
- Baby cot and high chair (on request)



Location & Local Information

Your home for the duration of your stay is located in the very heart of one of the world's most famous and renowned ski resorts.

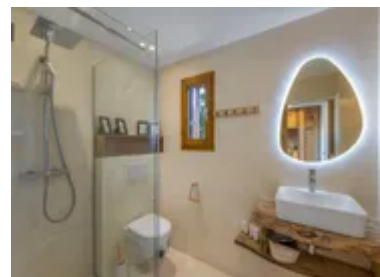
It's easy to get here with major airports, including Geneva, Lyon, Grenoble and Chambéry. Although the distance between airports varies, you'll be able to arrive at the property within three hours by car. Courchevel is well-vested in tourism, making it logistically straightforward. Upon arrival, you can use the shuttle service, private taxi or a private vehicle rental service directly from the airport.

The draw here is the astonishing natural beauty. Its charm is that it's idyllic in a way that few places today truly are. It embodies and celebrates winter in every way, making it ideal for those who favour (and savour) the colder months. You can enjoy the fairy-tale woods and the dominating views of the famed Alps.

You're perfectly positioned to enjoy the slopes – you're closest to the Plantrey and Tovets slopes. You can very easily enjoy adventures in this snowy wonderland. It doesn't matter if you're a veteran glued to your skies or a total beginner who wants to try something new; the terrain is vast and diverse, allowing skiers of all experience levels to test their mettle. Experts can enjoy challenging, adrenaline-inducing slopes, whilst beginners can enjoy a gentler introduction to this extreme sport.

Although skiing is central to many people's experiences of the area, there's plenty more to enjoy in Courchevel, including paragliding over the peaks, touring the mountain and enjoying a traditional horse-drawn sleigh. The village of Courchevel itself is a wonderful village where you can effortlessly whittle away some time. The streets are plentiful with boutique shops where you can select some local foods, winter wear and Alpine souvenirs for your nearest and dearest.

Those with a penchant for gastronomy will enjoy the thriving food scene. There are delectable French pastries



on offer, as well as indulgent hot chocolates and a vast array of gourmet restaurants.

Local Amenities

Nearest Airport	Geneva Airport (143km)
Nearest Airport 2	Lyon-Saint Exupéry Airport (193km)
Nearest Town/City	Courchevel (3.3km)
Nearest Restaurant	O'BôYA Restaurant Grill (700m)
Nearest Bar/Pub	Au planté de bâton (650m)
Nearest Piste	Plantret (10m)
Nearest Supermarket	Carrefour Montagne (650m)
Nearest Ski Hire	Intersport (700m)
Nearest Ski Lift	Plantret (200m)

What we love

- Courchevel flaunts a vibrant apres-ski scene, but it's not known for its nightlife. If that's your preference, you may want to consider a different resort.
- The area is commonly visited by families and is well set up to entertain them, but please do ensure you keep an eye on all children during the duration of your stay.
- If travelling with babies or infants, you can notify the property in advance to ensure that highchairs and baby cots can be provided and set up before you arrive.

What you should know...

- Courchevel flaunts a vibrant apres-ski scene, but it's not known for its nightlife. If that's your preference, you may want to consider a different resort.
- The area is commonly visited by families and is well set up to entertain them, but please do ensure you keep an eye on all children during the duration of your stay.
- If travelling with babies or infants, you can notify the property in advance to ensure that highchairs and baby cots can be provided and set up before you arrive.

Terms & Conditions

- **Security deposit:** Secure link sent to the client's email to fill in the details of the client's bank card online 2 weeks before the arrival for the amount of €4000. Funds won't be taken or blocked on the credit card in this case.
- **Arrival time:** Check-in 5.00 PM.
- **Departure time:** Check-out 10.00 AM.
- **Energy costs included?:** Yes, included in the rental price.
- **Linen & towels included?:** Yes, included in the rental price.
- **Pets welcome?:** Not allowed.
- **Changeover day:** Saturday.
- **End of stay cleaning available?:** Yes (except the kitchen). However, guests are required to leave the accommodation clean, tidy and in the same condition as on their arrival. Any extra cleaning, laundry, maintenance and/or garbage disposal required will be charged against the security deposit.
- **Smoking Allowed?:** Smoking & Vaping are not permitted.
- **Minimum stay:** 7 nights.
- **Heating costs included?:** Yes, included in the rental price.
- **Tax:** French Visitors Tax payable alongside balance (typically costs €1-€5 per adult per night- please enquire if exact amount is required).
- **Internet access?:** Wi-Fi internet access included.