

# Apartment Zola

Region: 3 Valleys   Sleeps: 13

---

## Overview

Apartment Zola offers a warm and welcoming base in the heart of Courchevel Village, bringing together modern Alpine style, generous living spaces and easy access to the slopes. Spread across three levels and finished to a high contemporary standard, it is a bright and inviting retreat for families and groups seeking a comfortable home for their time in the Three Valleys.

The spacious open plan living area sits beneath striking timber beams, creating a sense of height and light while still retaining the cosy feel of a traditional mountain home. Large windows frame the snowy landscape and fill the interior with natural daylight. After a day on the slopes, the inviting fireplace becomes the natural gathering point for relaxed evenings together. The fully equipped kitchen and two dining areas ensure effortless shared meals, whether you prefer long breakfasts or simple suppers at home.

With six bedrooms, all featuring their own bathroom, Apartment Zola is well suited to mixed groups. The layout works particularly well for families, offering dedicated spaces for adults and children. A private ski room with boot heaters keeps gear organised and ready for the next day, and two private garage spaces add convenient parking throughout your stay.

Thanks to its central position, you can reach the Tovets piste and lift within moments, making it easy to set off early or return home at your own pace. Shops, restaurants and the ski school are all close by, allowing you to enjoy Courchevel Village without relying on transport. Blending a balanced mix of comfort, style and practicality, Apartment Zola is an excellent choice for guests wishing to make the most of the Three Valleys.



## Facilities

Self-Catered • Ski Lift Nearby • Ski School Nearby • Boot Heaters • Mountain View • Walk To Slopes • Skiing • Ski-In/Ski-Out • Walking/Hiking Paths • Walk to Village • Ideal for Kids • Cots (Cribs) • Ideal for Teens • Maid Service Included • Modern • Walk to Restaurant • Parking Space • Wi-Fi/Internet • Lakes and Mountains • Chalet Apartment • Washing Machine • Outstanding Landscapes • Coffee Machine • Hairdryer • Outdoor Pursuit & Activities • Tourist Towns & Villages • TV • Garage • Dishwasher • Microwave • Safety Deposit Box • Working Fireplace/Woodburner • Heating • Ski Locker • Bathroom Toiletries • High Chair(s)

# Interior & Grounds

## *Apartment Interior*

### Level 0

- Bedroom 1: Double bed (180×200), ensuite bathroom with shower, towel dryer, hair-dryer, WC; balcony.
- Laundry room
- Lobby
- Separate WC

### Level 1

- Master bedroom: double bed (200×200), ensuite bathroom with bathtub + shower, double hand-basins, towel dryer, hair-dryer, WC; balcony.
- Bedroom 3: Double bed (180×200), ensuite bathroom with shower, towel dryer, hair-dryer, WC; balcony.
- Bedroom 4: Double bed (180×200), ensuite bathroom with shower, towel dryer, hair-dryer, WC; balcony.
- Bedroom 5: Children's bunk room (90×200, 2 sleeps), ensuite bathroom (shower + bath), towel dryer, hair-dryer, WC.
- Bedroom 6: Family bedroom with double bed (180×200) plus bunk bed (90×200); ensuite/shared bathroom with shower and bath; WC.
- Separate WC
- Independent bathroom: bathtub, shower, towel dryer, hairdryer, toilet, single hand basin

### Level 2

- Living room
- Dining room
- Fully fitted kitchen
- Breakfast area
- Balcony
- TV lounge- Fireplace

## *Outside grounds*

- Balcony with outdoor furniture
- Two private garage parking spaces
- Ski room with boot-heater area.

## **Additional Facilities**

- Bathroom products
- Wood for the fireplace
- Garage
- Safe
- Ski locker
- TV
- Wi-Fi
- Dishwasher
- Dryer
- Induction hobs
- Microwave





# Location & Local Information

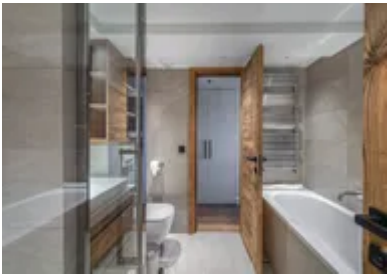
Apartment Zola enjoys a prime position in the centre of Courchevel Village, placing you within easy reach of the pistes, ski lifts and the lively atmosphere that makes this resort so appealing. The Tovets slope and lift sit only a short walk away, allowing you to step out each morning and head straight into the vast Three Valleys ski area. Whether you prefer gentle runs or more challenging terrain, the surrounding network offers routes for every level, along with excellent instructors at the nearby ski school for those beginning their alpine journey.

Courchevel Village combines a friendly feel with all the essentials for a relaxed stay. You will find bakeries, shops, ski hire and welcoming restaurants close to the apartment, making it simple to gather everything you need without travelling far. The village atmosphere is peaceful yet vibrant, particularly in the evenings when families stroll through the centre after a day in the snow.

For guests wishing to explore beyond the slopes, activities such as paragliding, winter walking and horse-drawn sleigh rides offer different ways to enjoy the mountains. With its blend of convenience and charm, Courchevel Village provides an ideal base for experiencing the best of the Three Valleys.

## Local Amenities

Nearest Airport	Geneva Airport (129 km)
Nearest Airport	Lyon (181 km)
Nearest Bar/Pub	Les Perles du Palais (110 m)
Nearest Piste	Tovets (10 m)
Nearest Restaurant	La Chapelle 1550 (140 m)



Nearest Ski Hire	<b>Intersport - Courchevel Village</b> (20 m)
Nearest Ski Lift	<b>Roys (Button Lift, access to Grangettes)</b> (10 m)
Nearest Ski Lift	<b>Grangettes</b> (100 m)
Nearest Supermarket	<b>Proxi Supermarché</b> (150 m)
Nearest Village	<b>Courchevel Village</b> (50 m)

## What we love

- The apartment is located overlooking the pistes, with beautiful views of the mountain
- The dedicated ski room with boot heaters keeps equipment organised and warm each morning
- The family-friendly layout including a children's bunk room and a flexible family bedroom is perfect for multi-generational ski holidays
- Two private garage parking spaces offering convenient access throughout your stay.

## What you should know...

- The property spans three levels with stairs throughout, which may not suit guests with reduced mobility
- Please note that ski-in access is reliable, but ski-out depends on snow conditions and route preference
- The apartment sits in a central village location, therefore you may be able to hear some activity during peak weeks, along with the odd noise from the pistes in the evening and mornings from the ski lifts and piste bashers
- Please note there is no lift inside the building, so luggage will need to be carried between floors.

# Terms & Conditions

- **Security deposit:** Secure link sent to the client's email to fill in the details of the client's bank card online 2 weeks before the arrival for the amount of €4000. This is in the form of a card authorisation, funds are not cashed
- **Arrival time:** Check-in 5.00 PM.
- **Departure time:** Check-out 10.00 AM.
- **Energy costs included?:** Yes, included in the rental price.
- **Linen & towels included?:** Yes, included in the rental price.
- **Pets welcome?:** Not allowed.
- **Other Ts and Cs:** Please note that rental of a cot and highchair is at an extra cost paid directly to the owner: Cot: 40€ per week Highchair: 30€ per week
- **Changeover day:** Saturday.
- **End of stay cleaning available?:** Yes, included in the rental price along with 3 hours of daily cleaning. However, guests are required to leave the accommodation clean, tidy and in the same condition as on their arrival. Any extra cleaning, laundry, maintenance and/or garbage disposal required will be charged against the security deposit.
- **Smoking Allowed?:** Smoking & Vaping are not permitted.
- **Minimum stay:** 7 nights.
- **Heating costs included?:** Yes, included in the rental price.
- **Tax:** French Visitors Tax payable alongside balance (typically costs €1-€5 per adult per night- please enquire if exact amount is required).
- **Internet access?:** Wi-Fi internet access included.