

Apartment Beneteau

Region: 3 Valleys **Sleeps:** 8

Overview

Nestled within the charming confines of Le Bettaix, an authentic Savoyard village that embraces the tranquil Doron riverbanks, stands a pristine, brand-new chalet ready to welcome you to the area. In this idyllic setting, you'll find Apartment Beneteau, a sophisticated apartment designed to cater to up to eight individuals.

The enviable location makes it the perfect place for those who want to get out on the slopes. It's a mere 150 meters away from the village's chairlift—an entryway to the sprawling ski domains of Les Menuires and Les 3 Vallées, the world's largest interconnected ski area.

The apartment's architecture is alpine at its heart, which translates to a sense of cosy traditional comfort, but it also harmoniously blends with contemporary Scandinavian design which elevates it to a more modern feel. It's this blend that makes this place truly special.

The spacious living area seamlessly intertwines with the kitchen and dining space, bathed in light from the many windows, and crowned by a soaring cathedral-inspired ceiling. The fully equipped kitchen invites culinary creativity, offering a platform to craft delectable meals while gazing upon the might of the neighbouring mountains. The grand outdoor terrace, sheltered by a charming roof, provides a haven for savouring the landscape.

This apartment is all about space. You'll find four bedrooms, a fusion of two doubles and two twins, each with their own mezzanine. You can also enjoy an office and mezzanine repurposed as a relaxation and gaming area. You'll also find a garage of your own and two outdoor parking spaces ensuring both security and convenience.

Snuggle up on the sofa and get warm by the inviting fire, curl up and read a book whilst taking in the snowy wonderland beyond your window, dine together at the table and whip up your favourite meals (we'd recommend attempting to make fondue whilst you're in the area!), spread out in front of the TV, have a hot drink out on the terrace, and snuggle up in the most serene of bedrooms, which promises a good night's sleep however you spent your day.

Step into a sense of tranquillity, play and comfort at Apartment Beneteau.

Facilities

Ski-In/Ski-Out • Ski Lift Nearby • Walk To Slopes • Lakes and Mountains • Washing Machine • Coffee Machine • Hairdryer • Self-Catered • Skiing • Walking/Hiking Paths • Wi-Fi/Internet • TV • Rural Location • Walk to Village • Cots (Cribs) • Modern • Chalet Apartment • Kid-friendly



excursions • Transfers Available • Ideal for Babies & Toddlers • Ideal for Kids • Ideal for Teens • Walk to Restaurant • Tumble Dryer • Dishwasher • Microwave • Working Fireplace/Woodburner • Heating • High Chair(s) • Parking Space • Outstanding Landscapes • Outdoor Pursuit & Activities

Interior & Grounds

The Apartment

Interiors

- Living room with fireplace
- Dining room
- Open kitchen
- Office
- Double or twin bedroom with one double bed and ensuite bathroom
- Double or twin bedroom with one double bed
- Two double or twin bedrooms with two single beds
- Ski room
- Laundry room
- Cloakroom
- Mezzanine
- Separate WC
- Independent bathroom with shower

Outdoor Grounds

- Balcony
- Terrace
- Panoramic view
- Garage

Additional Facilities

- Wi-Fi
- TV
- SONOS speaker
- Boots heater
- Ski locker
- Wood fireplace
- Fondue appliance
- Fridge
- Induction hobs
- Ironing board
- Electric juice squeezer
- Baby cot and high chair (on request)



Location & Local Information

Welcome to Saint-Martin-de-Belleville, a charming alpine village located in the Savoie region of the French Alps. It forms part of the famous Les Trois Vallées ski area, the largest interconnected ski domain in the world, which includes renowned ski resorts like Courchevel, Méribel, and Val Thorens. What makes Saint-Martin-de-Belleville unique is its authentic and traditional character, making it an idyllic destination for both skiers and non-skiers alike.

The village is divided into two main areas: Saint-Martin-de-Belleville - Centre and Saint-Martin-de-Belleville - Proche Centre.

Saint-Martin-de-Belleville is otherwise known as the centre and is what you'll come to know as the heart of the village, as well as its historic hub. This is where you'll want to come for postcard-perfect views, so you can get your fill of adorable wooden chalets, romantic cobblestone streets and a church at the very centre.

The atmosphere is one of eternal Christmas, with a warm and inviting appeal that ensures a true mountain village experience. Wander around the local shops and boutiques where you can purchase tasty local fare, ski gear and souvenirs for loved ones back home.

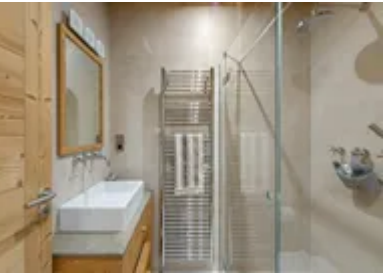
You'll find a diverse astronomical scene which caters to all palettes. Whether you seek a traditional mountain restaurant serving Savoyard specialties such as gooey indulgent fondue or refined gastronomic establishments.

The area is renowned for its legendary après-ski sessions as well as its assortment of bars and lounges where you can enjoy a lively and friendly drink following your adventures on the slopes.

Saint-Martin-de-Belleville - Proche Centre, offers a more peaceful and residential feel. The atmosphere is quieter and calmer here, making it ideal for families. You're still close to the action but far enough away to enjoy some serenity. You can easily access the ski slopes by foot or ski lift, making it a perfect spot for avid skiers and snowboarders.

One of the highlights of staying in Saint-Martin-de-Belleville is the direct access to the ski slopes. From both the centre and the nearby areas, you can easily reach the lifts and be on your way to explore the vast Les Trois Vallées ski area, which offers an extensive network of slopes suitable for all levels of skiers and snowboarders.

You'll find stunning mountain vistas, rich cultural heritage, and the opportunity to enjoy world-class skiing in a truly authentic French village setting. Enjoy your adventure.



Local Amenities

Nearest Airport	Geneva Airport (189 km)
Nearest Airport 2	Lyon Airport (187 km)

Nearest Town/City	Saint-Martin-de-Belleville (7.6 km)
Nearest Restaurant	Le Bistrot des Cimes (4.3 km)
Nearest Bar/Pub	Le Challenge (4.6 km)
Nearest Piste	Le Bettex (200 m)
Nearest Supermarket	Carrefour Montagne (5.5 km)
Nearest Ski Hire	Sport 2000 Balcons du Bettex (90m)
Nearest Ski Lift	Le Bettaix (250m)

What we love

- The use of wood makes this apartment really warm, inviting and spacious. You can't help but feel cosy immediately.
- Here we had the peacefulness of being in a mountain village, knowing we were close to the ski slopes. It was the perfect location.
- So much space here which was just great for us. We loved sitting outdoors with a warm drink and just taking in the views around us, which are really special.

What you should know...

- The alpine climate can cause fluctuating weather conditions. Be prepared for cold weather and pack warm clothing, including thermal layers and insulated jackets. Waterproof clothing is also handy, including waterproof footwear. You will heat up when skiing so have some light base layers ready.
- If you don't own your own gear, or don't want to pack it, you can rent pretty much everything you need, including skies, snowboards, boots, helmets and poles from the local ski store.
- If you're travelling during peak season take some time to make a reservation if there are particular places you want to visit. The area is very popular.

Terms & Conditions

- **Security deposit:** Secure link sent to the client's email to fill in the details of the client's bank card online 2 weeks before the arrival for the amount of €4300. Funds won't be taken or blocked on the credit card in this case.
- **Arrival time:** Check-in 5.00 PM.
- **Departure time:** Check-out 10.00 AM.
- **Energy costs included?:** Yes, included in the rental price.
- **Linen & towels included?:** Yes, included in the rental price.
- **Pets welcome?:** Not allowed.
- **Changeover day:** Saturday.
- **End of stay cleaning available?:** Yes (Winter only). However, guests are required to leave the accommodation clean, tidy and in the same condition as on their arrival. Any extra cleaning, laundry, maintenance and/or garbage disposal required will be charged against the security deposit.
- **Smoking Allowed?:** Smoking & Vaping are not permitted.
- **Minimum stay:** 7 nights.
- **Heating costs included?:** Yes, included in the rental price.
- **Tax:** French Visitors Tax payable alongside balance (typically costs €1-€5 per adult per night- please enquire if exact amount is required).
- **Internet access?:** Wi-Fi internet access included.