

Apartment Bachelot

Region: 3 Valleys Sleeps: 8

Overview

Allow us to unveil the newest addition to the illustrious Le Rocher residence, snuggled within an authentic Savoyard village that gracefully lies between the embrace of Saint Martin de Belleville and Les Menuires. This is the haven known as Le Bettaix, where the tranquillity of nature promises rejuvenation and an alluring change of scenery - the perfect formula for a triumphant ski getaway spread across two floors.

Enveloped by the very arms of the landscape, the apartment boasts an enviable vantage point, a mere 150 meters distant from the village's chairlift - a veritable gateway welcoming you toward the very heart of the Les Menuires resort and gifting you the gateway to the vast expanse of the 3 Valleys ski domain.

Your apartment is designed with cosiness and intimacy firmly in mind and also generates a feeling of understated sophistication and elegance. Crafted for comfort, the living room unfolds like a sanctuary. Sit and recharge in front of the magnificent fireplace and relax on the comfortable sofas to watch a spot of TV. On warmer days, enjoy the sprawling west-facing terrace, inviting you to recline and indulge in sunlit lunches whilst taking in truly lovely views.

A mix of wood, stone and dove-grey furnishings created a tranquil, muted space that dazzles with natural light. The open kitchen is prim, proper and sparkling white, the ideal place to rustle up some delicious meals for your party whilst not missing out on conversation and company.

When night-time falls enjoy one of four bedrooms, each a tapestry of comfort and minimalism. Among these, a cabin bedroom and two ensembles adorned with their own bath and shower spaces stand ready to cocoon you in tranquillity. Simple, modern bathrooms allow you to enjoy a relaxing bath or refreshing shower after a day spent adventuring.

For those seeking an additional touch of comfort, an extra bed is available upon request, ensuring every desire for space is met.

Le Rocher's latest gem stands poised to redefine your holiday experience, preparing you for comfort, the serenity of nature, and the irreplaceable joy of shared moments.

Facilities

Ski Lift Nearby • Bus/Shuttle To Slopes • Walk To Slopes • Self-Catered • Skiing • Ski-In/Ski-Out • Ideal for Kids • Walking/Hiking Paths • Ideal for Teens • Special Offer • Has Discount • Cots (Cribs) • Modern • Parking Space • Wi-Fi/Internet • Lakes and Mountains • Chalet Apartment • Rural Location • Washing Machine • Outstanding Landscapes • Coffee Machine



• Outdoor Pursuit & Activities • Tourist Towns & Villages • TV • Tumble
Dryer • Dishwasher • Microwave • Working Fireplace/Woodburner •
Heating • Kid-friendly excursions • Transfers Available • Ideal for Babies &
Toddlers • High Chair(s)

Interior & Grounds

The Apartment

Interiors

Ground Floor

- Double bedroom with one double bed, ensuite bathroom with shower and toilet
- Double bedroom with one double bed
- Separate WC
- Independent bathroom with shower, towel dryer, single hand basin

First Floor

- Double bedroom with one double bed, ensuite bathroom with shower and toilet
- Twin bedroom with one bunk bed
- Separate WC

Outdoor Grounds

- Garage
- Parking space
- Outdoor terrace and dining area

Additional Facilities

- Wifi
- TV
- Ski locker
- Boots heater
- Induction hobs
- Baby cot and highchair (on request)
- Living room
- Terrace
- Fireplace
- Dining room
- Dining area
- Open kitchen



Location & Local Information

Welcome to Saint-Martin-de-Belleville, a charming alpine village located in the Savoie region of the French Alps. It forms part of the famous Les Trois Vallées ski area, the largest interconnected ski domain in the world, which includes renowned ski resorts like Courchevel, Méribel, and Val Thorens. What makes Saint-Martin-de-Belleville unique is its authentic and traditional character, making it an idyllic destination for both skiers and non-skiers alike.

The village is divided into two main areas: Saint-Martin-de-Belleville - Centre and Saint-Martin-de-Belleville - Proche Centre.

Saint-Martin-de-Belleville is otherwise known as the centre and is what you'll come to know as the heart of the village and its historic hub. This is where you'll want to come for postcard-perfect views, so you can get your fill of adorable wooden chalets, romantic cobblestone streets and a church at the very centre.

The atmosphere is one of eternal Christmas, with a warm and inviting appeal that ensures a true mountain village experience. Wander around the local shops and boutiques where you can purchase tasty local fare, ski gear and souvenirs for loved ones back home.

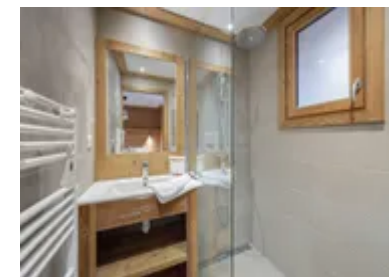
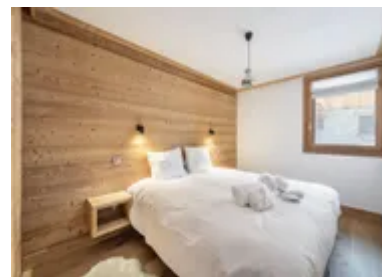
You'll find a diverse astronomical scene which caters to all palettes. Whether you seek a traditional mountain restaurant serving Savoyard specialities such as gooey indulgent fondue or refined gastronomic establishments.

The area is renowned for its legendary après-ski sessions as well as its assortment of bars and lounges where you can enjoy a lively and friendly drink following your adventures on the slopes.

Saint-Martin-de-Belleville - Proche Centre, offers a more peaceful and residential feel. The atmosphere is quieter and calmer here, making it ideal for families. You're still close to the action but far enough away to enjoy some serenity. You can easily access the ski slopes by foot or ski lift, making it a perfect spot for avid skiers and snowboarders.

One of the highlights of staying in Saint-Martin-de-Belleville is the direct access to the ski slopes. From both the centre and the nearby areas, you can easily reach the lifts and be on your way to explore the vast Les Trois Vallées ski area, which offers an extensive network of slopes suitable for all levels of skiers and snowboarders.

You'll find stunning mountain vistas, rich cultural heritage, and the opportunity to enjoy world-class skiing in a truly authentic French village setting. Enjoy your adventure.



Local Amenities

Nearest Airport	Geneva Airport (189 km)
Nearest Airport 2	Lyon Airport (187 km)

Nearest Town/City	Saint-Martin-de-Belleville (7.6 km)
Nearest Restaurant	La Table des Marmottes (3.8 km)
Nearest Bar/Pub	Le Lou-Bar (4.6 km)
Nearest Piste	Le Bettex (4.6 km)
Nearest Supermarket	Carrefour Montagne (3.3km)
Nearest Ski Hire	Sport 2000 Balcons du Bettex (90m)
Nearest Ski Lift	Le Betaix (200m)

What we love

- Perfect location. So peaceful and relaxing but the slopes were right there when we wanted them.
- The outdoor terrace is, to me, the key feature of the property. It was lovely to spend days and evenings out here.
- Such comfortable beds – I had a dream of a sleep. Perhaps that was wearing myself out with skiing all day, but it was so cosy!
- Great sofas, a charming fireplace, lots of space for us – just perfect all round.

What you should know...

- The alpine climate can cause fluctuating weather conditions. Be prepared for cold weather and pack warm clothing, including thermal layers and insulated jackets. Waterproof clothing is also handy, including waterproof footwear. You will heat up when skiing so have some light base layers ready.
- If you don't own your own gear, or don't want to pack it, you can rent pretty much everything you need, including skies, snowboards, boots, helmets and poles from the local ski store.
- If you're travelling during peak season take some time to make a reservation if there are particular places you want to visit. The area is very popular.

Terms & Conditions

- **Security deposit:** Secure link sent to the client's email to fill in the details of the client's bank card online 2 weeks before the arrival for the amount of €4000. Funds won't be taken or blocked on the credit card in this case.
- **Arrival time:** Check-in 5.00 PM.
- **Departure time:** Check-out 10.00 AM.
- **Energy costs included?:** Yes, included in the rental price.
- **Linen & towels included?:** Yes, included in the rental price (Winter only).
- **Pets welcome?:** Not allowed.
- **Changeover day:** Saturday.
- **End of stay cleaning:** Standard changeover clean included in the price (winter only). Guests are required to leave the accommodation clean, tidy and in the same condition as on their arrival. Any extra cleaning, laundry, maintenance and/or rubbish disposal required will be charged against the security deposit.
- **Smoking Allowed?:** Smoking & Vaping are not permitted.
- **Minimum stay:** 7 nights.
- **Heating costs included?:** Yes, included in the rental price.
- **Tax:** French Visitors Tax payable alongside balance (typically costs €1-€5 per adult per night- please enquire if exact amount is required).
- **Internet access?:** Wi-Fi internet access included.