

Apartment Abilio

Region: Portugal **Sleeps:** 12

Overview

Apartment Abilio is a bright and beautifully designed retreat in the heart of Porto, perfect for large groups of friends or families. With five spacious bedrooms, each featuring a private bathroom, and flexible bed arrangements, the apartment easily accommodates a variety of guest needs. The open-plan living, dining, and kitchen area is both stylish and practical, offering plenty of room to gather, cook, and relax. The fully equipped kitchen opens onto a balcony, ideal for enjoying fresh air or morning coffee on sunny days.

From carefully chosen furnishings to thoughtful lighting and finishes, every detail of Apartment Abilio creates a welcoming and contemporary atmosphere. The living room's sofa beds offer additional sleeping options, while cots are available for families with young children. Just a five-minute walk from the vibrant Bolhão market, the apartment is ideally located for exploring local culture, cuisine, and attractions. Apartment Abilio provides the perfect blend of space, comfort, and convenience for a memorable stay in Porto.

Facilities

Historical Sites • Boat Trips • City Homes & Apartments • Ideal for Kids • Wine Tasting • Air-Con • Maid Service Available • Ideal for Teens • Cots (Cribs) • Pets on Request • Beach Nearby • All Bedrooms En-Suite • <1hr to Airport • Walk to Restaurant • Wi-Fi/Internet • Easy By Train • Washing Machine • Coffee Machine • Hairdryer • Outdoor Pursuit & Activities • Tourist Towns & Villages • TV • Lift • Dishwasher • Microwave • Electric Car Charger • Satellite TV • Kid-friendly museum • Kid-friendly excursions • Transfers Available • No car required • Breakfast Available • Ideal for Babies & Toddlers • High Chair(s)



Interior & Grounds

Interior

- Living room with sofa beds
- Fully equipped kitchen with breakfast bar
- Dining area
- Master bedroom: Double bed with en-suite
- Bedroom 2: Double bed with en-suite
- Bedroom 3: Twin beds with en-suite
- Bedroom 4: Twin beds with en-suite
- Bedroom 5: Twin beds with en-suite

Exterior

- Balcony

Additional Facilities

- Wi-Fi
- Air-conditioning
- Satellite TV
- Washing machine
- Dishwasher
- Coffee machine
- Cot can be provided on request



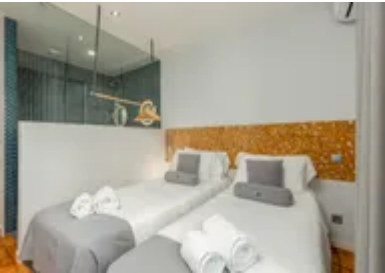
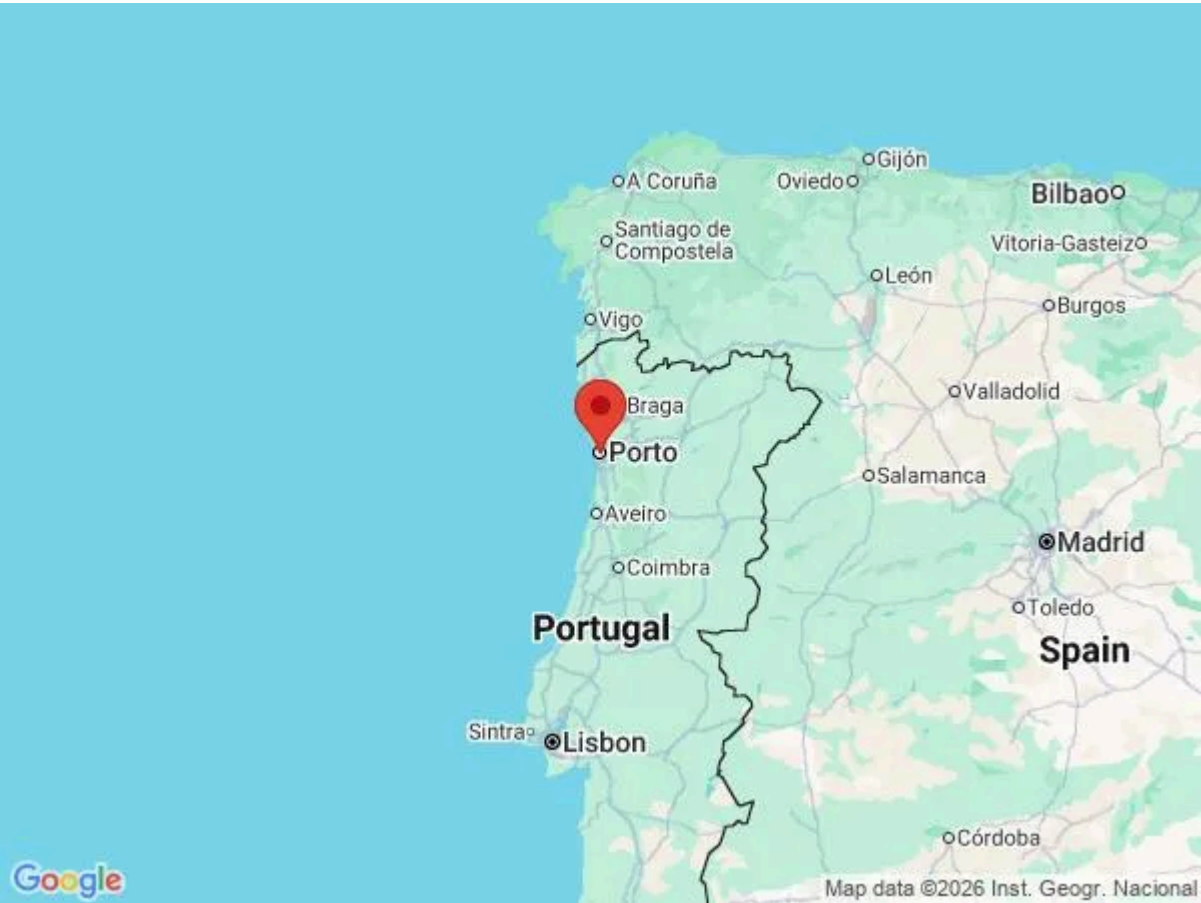
Location & Local Information

Located in the heart of Porto, Apartment Abilio offers guests a prime base from which to explore the city's many highlights. Just a five-minute walk from the iconic Bolhão market, you'll find yourself surrounded by the flavours, sounds, and colours of authentic Porto life. This vibrant marketplace is the perfect place to gather fresh ingredients and immerse yourself in the city's culinary culture.

Porto, set along the scenic Douro River, is a city rich in history and charm. Its UNESCO-listed centre reveals stunning architecture, from the azulejo-clad São Bento Station to the colourful houses of the Ribeira district. Explore the city's famed port wine cellars in Vila Nova de Gaia, wander through cultural gems like Fundação de Serralves, or lose yourself in the magic of Livraria Lello. With its blend of historical grandeur, artistic flair, and warm hospitality, Porto offers an unforgettable experience, and Apartment Abilio places you right at the centre of it all.

Local Amenities

Nearest Airport	Francisco Sá Carneiro Airport (17 km)
Nearest Bar/Pub	BUDAPESTE Ruin Bar (350 m)
Nearest Beach	Praia do Carneiro (7 km)
Nearest Restaurant	Antunes (210 m)
Nearest Supermarket	Froiz (650 m)
Nearest Train Station	Porto São Bento (900 m)
Sightseeing	Porto Cathedral (1 km)



What we love

- Spacious and well-equipped, this bright apartment is perfect for large groups looking to explore Porto!
- Every room in the apartment has been immaculately designed, looking like something out of a design magazine!
- The central location is fantastic, perfect for exploring all the best sites Porto has to offer

What you should know...

- Please note that we do not have a reception in the building, so you must inform us of your arrival time in advance
- Access to the apartment is by elevator
- The building also provides a private garage and electric vehicle charging, subject to availability

Terms & Conditions

- **Security deposit:** €200 charged to client's credit card before arrival and refunded two weeks after departure, subject to full inspection.
- **Arrival time:** 3 pm. Late check-in possible at an extra cost of €30 per booking, please enquire.
- **Departure time:** 11 am. Late check-out possible at an extra cost of €30 per booking, please enquire.
- **Energy costs included?:** Yes, included in the rental price.
- **Linen & towels included?:** Yes, included in the rental price.
- **Pets welcome?:** On request only and with prior agreement with the owner. If accepted, a pet supplement of €40 per booking will apply (paid locally).
- **Other Ts and Cs:** Please note that the use of a garage costs €17.50 a night.
- **Changeover day:** Flexible.
- **End of stay cleaning available?:** Not included in the rental price, extra €140 to be paid with the balance due.
- **Smoking Allowed?:** Smoking & Vaping are not permitted.
- **Heating costs included?:** Not available on this property.
- **Tax:** Portuguese Visitors Tax payable to local supplier (typically costs €1-€10 per adult per night - please enquire if exact amount is required).
- **Internet access?:** Wi-Fi internet access included.