

Apartment Pilon

Region: 3 Valleys Sleeps: 6

Overview

Nestled in the prestigious French Alps resort of Courchevel is Apartment Pilon, an exquisite alpine retreat that seamlessly combines luxurious comfort with breathtaking mountain vistas. This stunning chalet invites guests to embark on a captivating journey where every detail exudes sophistication, making it an ideal destination for those seeking a memorable and indulgent winter getaway.

The apartment boasts a privileged location with ski-in/ski-out convenience, granting ski enthusiasts immediate access to the world-renowned Three Valleys ski area. As the largest interconnected ski domain globally, guests can immerse themselves in over 600 kilometres of pristine slopes, catering to skiers of all levels. Whether you're an avid winter sports enthusiast or a first-time skier, this chalet is the perfect base for exhilarating alpine adventures.

The chalet features a light, neutral decor throughout, showcasing a seamless blend of traditional alpine architecture and contemporary design, with exposed wooden beams, stone fireplaces, and sumptuous furnishings. The spacious living area is the perfect place to relax with loved ones and recharge your batteries, with large windows framing stunning mountain panoramas that change with the shifting light.

A fully equipped, state-of-the-art kitchen awaits aspiring chefs, or guests can indulge in the services of a private chef who will craft gourmet meals tailored to individual preferences. The elegant dining area sets the stage for memorable dining experiences, complemented by impeccable service from the dedicated staff.

Apartment Pilon accommodates up to ten guests across five exquisite bedrooms, each thoughtfully designed to



ensure a restful night's sleep. Guests can unwind in the lap of luxury, cocooned in soft linens and surrounded by tasteful decor. Some bedrooms boast private balconies - perfect spots for enjoying a morning cuppa while taking in the breathtaking alpine views.

After a day on the slopes, guests can retreat to the chalet's private wellness facilities, featuring an inviting indoor pool, sauna, and hammam. Here, relaxation and rejuvenation await, providing the ultimate sanctuary to soothe tired muscles and invigorate the senses. Apartment Pilon truly is a haven of alpine elegance, where guests can immerse themselves in luxurious comfort amidst the stunning French Alps. With ski-in/ski-out convenience, lavish interiors, impeccable service, and a wealth of winter experiences at its doorstep, this chalet promises an extraordinary winter retreat that will linger in the hearts and memories of the whole family.

Facilities

Skiing • Ski Lift Nearby • Walk To Slopes • Self-Catered • Ski-In/Ski-Out • Ideal for Kids • Ideal for Teens • All Bedrooms En-Suite • Modern • Walk to Restaurant • Wi-Fi/Internet • Lakes and Mountains • Chalet Apartment • Washing Machine • Outstanding Landscapes • Coffee Machine • Hairdryer • Outdoor Pursuit & Activities • Tourist Towns & Villages • TV • Tumble Dryer • Dishwasher • Microwave • Heating • Transfers Available

Interior & Grounds

Apartment Interior

- Living room
- Dining room
- Closed fitted kitchen
- Double bedroom (180 x 200) with wardrobe, balcony and TV and ensuite bathroom with shower, towel dryer, hairdryer, toilet, single hand basin and scale
- Double or Twin bedroom (180 x 200) with wardrobe and balcony and ensuite bathroom with shower, towel dryer, hairdryer and single hand basin
- Double bedroom (160 x 200) with wardrobe, balcony and TV and ensuite bathroom with bathtub, towel dryer, hairdryer, toilet and single hand basin
- Separate WC

Outside Grounds

- Balcony
- Ski locker

Additional Facilities

- Hairdryer
- Dishwasher
- Dryer
- Kettle
- Microwave
- Nespresso coffee machine
- Raclette machine
- Toaster
- Vacuum
- Washing machine
- Bathroom products
- Reception in agency
- Elevator

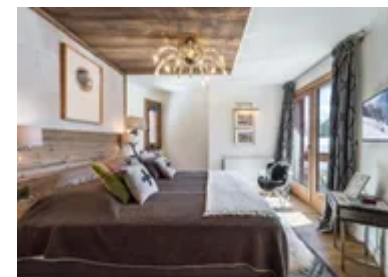


Location & Local Information

Perched high in the prestigious French Alps resort of Courchevel, Apartment Pilon enjoys an enviable location that captivates winter enthusiasts and nature lovers alike. This luxurious chalet is nestled amidst an incredible alpine landscape, offering an idyllic setting for an unforgettable holiday experience. This beautiful chalet boasts one of the most coveted locations in Courchevel with its ski-in/ski-out convenience. Guests can effortlessly step out of the chalet and onto the slopes, immersing themselves in the boundless skiing opportunities of the renowned Three Valleys ski area. As the largest interconnected ski domain in the world, it offers an extensive network of pristine slopes, catering to skiers of all levels. Beginners can take advantage of expert instructors, while experienced skiers can revel in the exhilarating challenges of the diverse terrain.

Beyond its exceptional skiing opportunities, the Courchevel resort enchants visitors with its timeless alpine charm. Apartment Pilon is nestled right at the heart of the resort, allowing guests to explore the picturesque village's enchanting streets and indulge in authentic Savoyard culture. Explore quaint boutiques, art galleries, and gourmet restaurants, each contributing to the resort's rich cultural tapestry. The surrounding winter wonderland provides an array of activities for all ages. Families can embark on thrilling snowmobile rides, go ice skating on the outdoor rink, or experience the excitement of dog sledging. For those seeking a peaceful escape, guided snowshoeing excursions reveal the breathtaking beauty of the snowy landscapes.

During the warmer months, guests can explore the network of hiking and mountain biking trails, revelling in the vibrant colours and lush landscapes of the French Alps. The region offers endless opportunities for birdwatching, wildlife spotting, and picnics amidst nature's splendour. If it's unparalleled vistas you seek, Oliver recommends taking a scenic helicopter tour over the majestic peaks for a breathtaking perspective of the stunning Alpine panoramas. And for nature lovers, the



nearby Vanoise National Park, a natural haven teeming with diverse flora and fauna, offers hiking trails that lead to hidden mountain lakes and cascading waterfalls.

Local Amenities

Nearest Airport	Geneva Airport (132km)
Nearest Airport 2	Lyon-Saint Exupéry Airport (177km)
Nearest Town/City	Courchevel (4.6km)
Nearest Restaurant	Koori (30m)
Nearest Bar/Pub	Au planté de bâton (1.2km)
Nearest Piste	Jardin Alpin (50m)
Nearest Supermarket	Carrefour Montagne (1.3km)
Nearest Ski Hire	Skiset Ski Service New Solarium (57m)
Nearest Ski Lift	Jardin Alpin (200m)

What we love

- Apartment Pilon is situated in Three Valleys ski area, making it an ideal retreat for winter sports enthusiasts.
- The chalet features incredible mountain views - be sure to pack your camera!
- We loved the luxurious interior and charming alpine architecture.

What you should know...

- With its five stylishly designed bedrooms, Apartment Pilon comfortably accommodates up to ten guests.
- The chalet's private wellness facilities, including an indoor pool, sauna, and hammam.
- Guests staying at Apartment Pilon can enjoy the convenience of ski-in/ski-out access, allowing them to seamlessly hit the slopes.

Terms & Conditions

- **Security deposit:** Secure link sent to the client's email to fill in the details of the client's bank card online 2 weeks before the arrival for the amount of €3000. Funds won't be taken or blocked on the credit card in this case.
- **Arrival time:** Check-in 5.00 PM.
- **Departure time:** Check-out 10.00 AM.
- **Energy costs included?:** Yes, included in the rental price.
- **Linen & towels included?:** Yes, included in the rental price.
- **Pets welcome?:** Not allowed.
- **Changeover day:** Saturday.
- **End of stay cleaning available?:** Yes, except the kitchen and scheduled cleaning on request (additional charge). However, guests are required to leave the accommodation clean, tidy and in the same condition as on their arrival. Any extra cleaning, laundry, maintenance and/or garbage disposal required will be charged against the security deposit.
- **Smoking Allowed?:** Smoking & Vaping are not permitted.
- **Minimum stay:** 7 nights.
- **Heating costs included?:** Yes, included in the rental price.
- **Tax:** French Visitors Tax payable alongside balance (typically costs €1-€5 per adult per night- please enquire if exact amount is required).
- **Internet access?:** Wi-Fi internet access included.