

Apartment Hilario

Region: Portugal Sleeps: 10

Overview

Apartment Hilario is an ideal retreat for families or large groups seeking comfort and convenience in the heart of Porto. With four adaptable bedrooms and private en-suite bathrooms, the apartment offers privacy and flexibility for every guest. The open-plan kitchen, dining, and living area provides a spacious setting for shared meals and relaxed gatherings, while the living room's sofa beds offer extra sleeping arrangements for larger parties. Guests travelling with children can request cots, ensuring a restful stay for all ages.

The apartment's elegant, contemporary décor creates a calm and inviting atmosphere, complemented by a private balcony perfect for enjoying fresh air on warm days. Located just a five-minute walk from the vibrant Bolhão market, guests are steps away from local flavours, culture, and fresh produce. Apartment Hilario's central setting, modern amenities, and generous layout make it a wonderful base for exploring the captivating city of Porto together.



Facilities

Historical Sites • Hairdryer • Coffee Machine • Wi-Fi/Internet • Air-Con • TV • Wine Tasting • Washing Machine • City Homes & Apartments • Lift • Easy By Train • Maid Service Available • Cots (Cribs) • Beach Nearby • Kid-friendly museum • Kid-friendly excursions • Water excursions/Boat trips • Transfers Available • No car required • Breakfast Available • Ideal for Babies & Toddlers • Ideal for Kids • Ideal for Teens • Walk to Restaurant • <1hr to Airport • Dishwasher • Microwave • All Bedrooms En-Suite • Satellite TV • High Chair(s) • Outdoor Pursuit & Activities • Tourist Towns & Villages

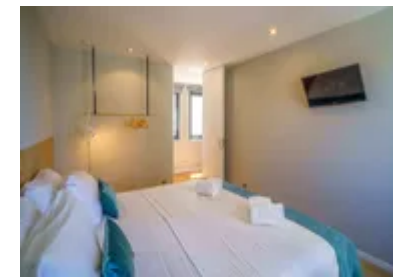
Interior & Grounds

Interior

- Living room with two double sofa beds
- Fully equipped kitchen
- Dining area
- Master bedroom: King-size bed and en-suite
- Bedroom 2: King-size bed and en-suite
- Bedroom 3: Twin beds with en-suite
- Bedroom 4: Twin with en-suite
- Bathroom

Additional Facilities

- Wi-Fi
- Air-conditioning
- Satellite TV
- Washing machine
- Dishwasher
- Coffee machine
- Cot can be provided on request



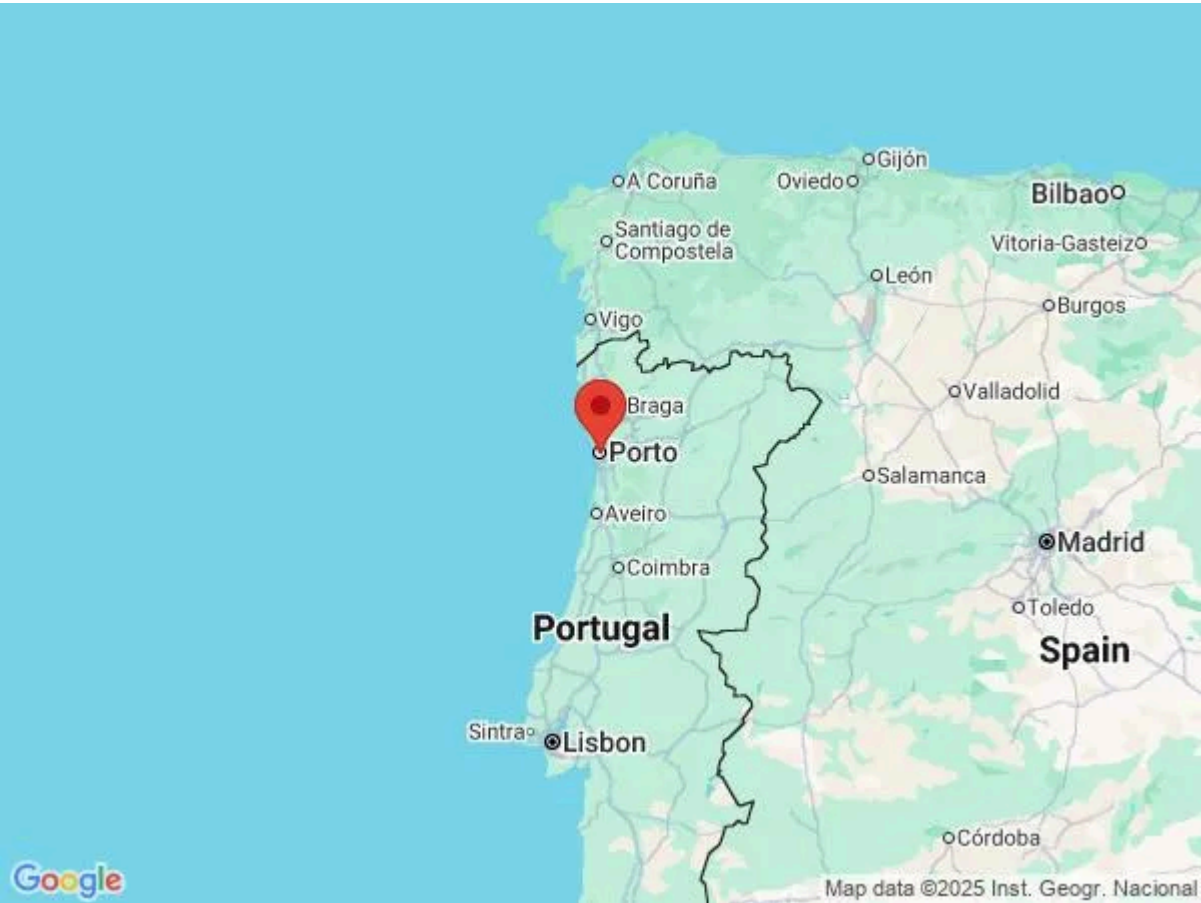
Location & Local Information

Apartment Hilario enjoys a superb central location in the heart of Porto, just steps from the iconic Bolhão Market. This bustling local hub invites guests to experience the true flavour of the city, offering fresh produce, artisanal goods, and a vibrant glimpse into Porto's daily life. The apartment's proximity to a wide range of shops, restaurants, and transport links makes it an excellent base for exploring all that the city has to offer.

Porto itself is a captivating destination known for its riverside charm, historic centre, and thriving culture. Visitors can meander through the atmospheric streets of Ribeira, admire tiled facades, or take in sweeping views from the Luís I Bridge. Wine lovers can visit the famed cellars of Vila Nova de Gaia, while culture seekers will find inspiration in contemporary museums and live music venues. From architectural marvels to rich culinary traditions, Porto delivers a dynamic and unforgettable experience.

Local Amenities

| | |
|-----------------------|--|
| Nearest Airport | Francisco Sá Carneiro Airport (17 km) |
| Nearest Train Station | Trindade Underground Station (600 m) |
| Nearest Supermarket | Froiz (575 m) |



What we love

- Chic and stylish throughout, everything about this modern apartment feels indulgent and sophisticated, perfect for a carefree stay!
- Located in the historic centre of Porto, in the renowned Ribeira district, this is an idyllic base for exploring the city
- With four bedrooms and spacious living spaces, Apartment Hilario is a brilliant choice for larger groups

What you should know...

- Please note that we do not have a reception in the building, so please inform us of your arrival time in advance
- The living room offers two double sofa beds, ideal for alternate sleeping arrangements with large families
- The apartment is equipped with air-conditioning for a comfortable stay all year round

Terms & Conditions

- **Security deposit:** €200 charged to client's credit card before arrival and refunded two weeks after departure, subject to full inspection.
- **Arrival time:** 3 pm. Late check-in possible at an extra cost of €30 per booking, please enquire.
- **Departure time:** 11 am. Late check-out possible at an extra cost of €30 per booking, please enquire.
- **Energy costs included?:** Yes, included in the rental price.
- **Linen & towels included?:** Yes, included in the rental price.
- **Pets welcome?:** On request only and with prior agreement with the owner. If accepted, a pet supplement of €40 per booking will apply (paid locally).
- **Other Ts and Cs:** Please note that the use of a garage costs €17.50 a night.
- **Changeover day:** Flexible.
- **End of stay cleaning available?:** Not included in the rental price, extra €100 to be paid with the balance due.
- **Smoking Allowed?:** Smoking & Vaping are not permitted.
- **Minimum stay:** 3 nights. All other durations on request.
- **Heating costs included?:** Not available on this property.
- **Tax:** Portuguese Visitors Tax payable to local supplier (typically costs €1-€10 per adult per night - please enquire if exact amount is required).
- **Internet access?:** Wi-Fi internet access included.