

Apartment Mac

Region: Edinburgh **Sleeps:** 4

Overview

Apartment Mac is a simple yet tasteful property boasting an excellent location, just a five-minute stroll away from the beautiful Meadows Park. With its stylish and artfully decorated interior, this apartment creates a welcoming and homely atmosphere from the moment you step inside.

The interior layout of Apartment Mac offers a bright and spacious main living area, featuring a generously sized sitting room seamlessly connected to an open-plan kitchen with dining space for up to six guests. This setup provides a perfect setting for gatherings and shared meals, making it an ideal choice for families and groups of friends.

As you journey down the hallway, you'll find two comfortable bedrooms, one featuring a super king-size bed that can be conveniently zip linked into two twin beds, offering versatility for different sleeping arrangements. The second bedroom offers a king-size bed, ensuring a peaceful and restful night's sleep. For additional sleeping space, the living room comes equipped with a double sofa bed, accommodating extra guests with ease.

Exteriorly, Apartment Mac resides within a converted brick print works building, exuding a blend of historic charm and contemporary living. As you step outside, you'll find yourself immersed in the vibrant neighbourhood of Newington. The area is alive with a plethora of unique boutiques, inviting cafes, delightful restaurants, and charming pubs, providing a diverse range of experiences for residents and visitors alike.

The apartment's convenient location near Meadows Park offers a delightful opportunity to enjoy the great outdoors. The Meadows is a beautiful green space where families can engage in leisurely walks, picnics, or recreational



activities, providing a peaceful retreat in the city's heart. With its array of amenities and attractions, Newington allows guests to immerse themselves in the local culture and vibrant city life. From exploring hidden gems in boutiques to savouring the culinary delights of the diverse restaurant scene, Apartment Mac's location ensures a fulfilling and enriching stay for its guests.

Apartment Mac is a delightful abode with a charming and welcoming atmosphere, thoughtfully furnished and decorated with an artful eye. Its excellent location in the heart of Newington offers a gateway to Edinburgh's cultural riches and vibrant city life. Whether strolling through the picturesque Meadows or discovering the diverse local scene, guests will surely experience the best of Edinburgh during their stay at Apartment Mac.

Facilities

Washing Machine • City Homes & Apartments • Wi-Fi/Internet • Air-Con • Recommended • Hairdryer • Historical Sites • Romantic • Horse Riding • DVD • Wow Factor • Walk to Village • Zoo • Kid-friendly museum • Kid-friendly excursions • Transfers Available • No car required • Ideal for Babies & Toddlers • Ideal for Kids • Ideal for Teens • <1hr to Airport • Tumble Dryer • Dishwasher • Microwave • Tourist Towns & Villages

Interior & Grounds

The Apartment

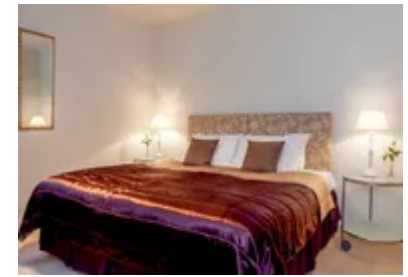
Apartment Mac is a simple yet tasteful property boasting an excellent location, just a five-minute stroll away from the beautiful Meadows Park.

Interior

- Well-equipped kitchen with dining table
- Open plan living room with sofa bed
- Master bedroom: Super king-size bed (Zip link for two twins)
- Bedroom 2: King-size bed
- Family bathroom

Additional Facilities

- Wi-Fi
- TV
- Washing machine
- Iron
- Dishwasher
- Hair dryer



Location & Local Information

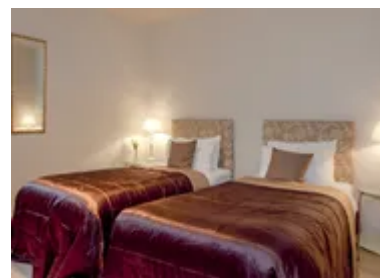
Apartment Mac enjoys an enviable location in Newington's vibrant and eclectic neighbourhood, making it an ideal base for exploring Edinburgh's cultural riches and dynamic atmosphere. Situated just a short five-minute walk away from the picturesque Meadows Park, this area is a sought-after destination for locals and visitors alike.

Newington exudes a charming blend of history and modernity, with its streets lined with a mix of traditional and contemporary architecture. The neighbourhood's character is defined by its converted buildings. Apartment Mac finds its home within a former brick printworks building, showcasing a unique fusion of historic charm and contemporary living.

As you step out into the streets of Newington, you'll be greeted by a plethora of unique boutiques, inviting cafes, restaurants, and pubs. This vibrant scene creates a lively ambience that beckons exploration, where visitors can indulge in delightful shopping experiences and savour diverse culinary delights.

For those seeking green spaces and opportunities for outdoor activities, the Meadows Park offers an idyllic retreat. This expansive green expanse is perfect for leisurely strolls, family picnics, or engaging in recreational activities like football, Frisbee, or a relaxing afternoon with a good book. Apartment Mac's proximity to the Meadows allows guests to effortlessly immerse themselves in the park's natural beauty, providing a welcome respite from the city's hustle and bustle. The park's tranquil atmosphere and scenic pathways offer an excellent backdrop for morning jogs, leisurely bike rides, or simply soaking in the fresh air.

Beyond the immediate surroundings, Newington's central location places guests within easy reach of Edinburgh's main attractions. The bustling city centre and iconic landmarks, such as the historic Royal Mile, Edinburgh Castle, and the vibrant Grassmarket area, are all easily accessible, ensuring exciting adventures for families and



groups.

The neighbourhood's eclectic charm extends to its cultural offerings, with theatres, galleries, and museums scattered throughout the area. Families can delve into the city's artistic and historical treasures, offering enriching experiences for both young and adult minds.

Apartment Mac's location in Newington offers a delightful immersion into Edinburgh's dynamic and vibrant city life. The neighbourhood's diverse attractions, from charming boutiques to the tranquillity of the Meadows Park, ensure that guests can experience the best of Edinburgh's cultural riches and natural beauty. Whether seeking a leisurely stroll, engaging in outdoor activities, or exploring the city's historical and artistic heritage, Newington provides a captivating backdrop for a memorable stay in the heart of Edinburgh.

Local Amenities

Nearest Airport	Edinburgh Airport (14 km)
Nearest Train Station	Edinburgh Waverley Train Station (2 km)
Nearest Supermarket	Tesco Express (51 m)

What we love

- Apartment Mac offers a tasteful and artfully decorated interior, creating a welcoming and homey atmosphere for guests to enjoy
- The prime location in the vibrant Newington neighbourhood places this apartment just minutes away from the picturesque Meadows Park
- Residing within a converted brick printworks building, the apartment presents a unique blend of historic charm and modern living, adding to the allure of this delightful abode

What you should know...

- Over the weekend on the street, free parking is available just around the corner from the apartment. During the week, there is Free on-street parking on residential streets, a 10-minute walk away
- One member of the booking party must be over 25 years
- There is a small step into the communal area, a small step into the flat, and one step inside the flat

Terms & Conditions

- **Security deposit:** £500 paid via Superhog (external website) to the owner before arrival and refunded two weeks after departure, subject to full inspection.
- **Arrival time:** 15:30 - 19:00
- **Departure time:** 10:30
- **Energy costs included?:** Yes, included in the rental price.
- **Linen & towels included?:** Yes, included in the rental price.
- **Pets welcome?:** On request only and with prior agreement with the owner. If accepted, a pet supplement may be required. This will be paid locally and the amount is TBC.
- **End of stay cleaning available?:** Yes. However, guests are required to leave the accommodation clean, tidy and in the same condition as on their arrival. Any extra cleaning, laundry, maintenance and/or rubbish disposal required will be charged against the security deposit.
- **Smoking Allowed?:** Smoking & Vaping are not permitted.
- **Other 2:** Please note that the lead guest is minimum 25 years.
- **Other 3:** High chairs can be hired at an additional cost. Please enquire during the booking process.
- **Heating costs included?:** Yes, included in the rental price.
- **Internet access?:** Wi-Fi internet access included.