

# Apartment Skye

**Region:** Edinburgh **Sleeps:** 6

---

## Overview

Apartment Skye is an exquisite property, exuding an exclusive 5-star charm and boasting magnificent views of Edinburgh Castle. Situated in a central location, this city centre apartment offers the perfect base for experiencing all the wonders Edinburgh offers.

The interior layout of Apartment Skye is characterised by spaciousness and elegance. The well-appointed kitchen features a generous dining room table that comfortably accommodates six guests, making it an ideal setting for family meals and gatherings. The living room, adorned with large and beautiful windows, basks in abundant natural light, capturing the essence of Edinburgh's radiant beauty.

The grand bedrooms further add to the apartment's allure, with their elegant design and expansive layout creating an atmosphere fit for divine royalty, ensuring guests experience the utmost comfort. Three generously sized bedrooms offer flexible sleeping arrangements to suit various guest preferences. The master bedroom features a sumptuous super king-size bed with an ensuite, providing a luxurious and private haven. The second bedroom also offers a super king-size or twin bed option with an ensuite, catering to individual guest needs. The third bedroom provides the same super king-size or twin bed versatility, ensuring all guests enjoy a restful and personalised stay.

Stepping outside, Apartment Skye enjoys a prime location just a short five-minute walk from the iconic Princes Street, renowned for its shopping and vibrant atmosphere. The prestigious Usher Hall, a historic concert hall and Fringe venue lies within easy reach, offering delightful cultural experiences for music enthusiasts. The apartment's neighbourhood is highly coveted, with the famous Royal Mile just minutes away. This historic



thoroughfare combines the city's rich heritage, offering a captivating blend of attractions, shops, eateries, and local markets that epitomise Edinburgh's lively spirit.

Apartment Skye is a truly remarkable residence, combining opulence, breathtaking views, and a central location to provide an unforgettable Edinburgh experience. With its spacious interior and regal ambience, the apartment invites guests to indulge in the city's splendours. At the same time, its proximity to iconic landmarks, entertainment venues, and charming local hotspots ensures a well-rounded and delightful stay.

## Facilities

Washing Machine • City Homes & Apartments • Wi-Fi/Internet • Recommended • Coffee Machine • Hairdryer • Romantic • Historical Sites • DVD • Laptop Friendly Workspace • Wow Factor • Walk to Village • Zoo • Kid-friendly museum • Kid-friendly excursions • Transfers Available • No car required • Ideal for Babies & Toddlers • Ideal for Kids • Ideal for Teens • <1hr to Airport • Tumble Dryer • Dishwasher • Microwave • Smart TV • Heating • Tourist Towns & Villages

# Interior & Grounds

## The Apartment

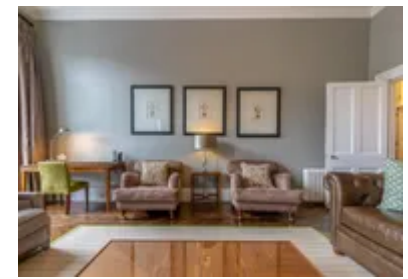
Apartment Skye is an exquisite property, exuding an exclusive 5-star charm and boasting magnificent views of Edinburgh Castle.

### *Interior*

- Spacious Kitchen with Dining Room Table
- Living Room with Large Beautiful Windows
- Master Bedroom: Super king-size bed with ensuite
- Bedroom 2: Super king-size or twin bed - zip & link with ensuite
- Bedroom 3: Super king-size or twin bed - zip & link
- Bathroom

### **Additional Facilities**

- Wi-Fi
- Dishwasher
- Coffee machine
- Washing machine and dryer
- Heating



## Location & Local Information

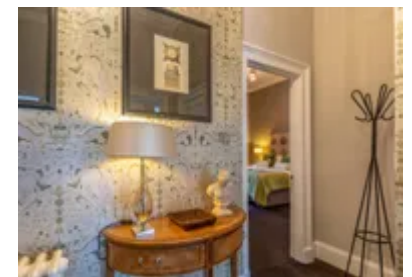
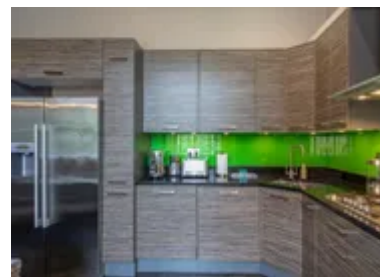
Apartment Skye enjoys a prime and enviable location in the heart of Edinburgh, a city renowned for its rich history, cultural treasures, and vibrant atmosphere. Situated just minutes from iconic landmarks and sought-after attractions, the apartment offers unparalleled convenience and accessibility for exploring all that Edinburgh offers.

One of the standout features of Apartment Skye's location is its breathtaking view of Edinburgh Castle. The majestic fortress stands tall against the city's skyline, an enduring symbol of Scotland's history and heritage. Guests are treated to a daily spectacle, witnessing the castle's grandeur and beauty from the comfort of their accommodation, creating an unforgettable and enchanting experience.

The apartment's central location is within a short five-minute walk from Princes Street, a bustling boulevard known for its diverse shopping options, boutique stores, and lively ambience. Princes Street caters to every shopping desire, from high-end brands to charming boutiques, making it a paradise for fashion enthusiasts and retail therapy seekers.

Apartment Skye's proximity to the famed Royal Mile further enhances its appeal. This historic thoroughfare stretches from Edinburgh Castle to Holyrood Palace, offering a delightful journey through centuries of history and heritage. Guests can explore a myriad of attractions, including the St Giles' Cathedral, the Real Mary King's Close, and a plethora of charming cafes, shops, and traditional Scottish pubs along the way.

Beyond its historic charm, the neighbourhood surrounding Apartment Skye is brimming with delectable eateries, cosy dive bars, and local markets, showcasing the city's diverse culinary scene and vibrant social life. The area effortlessly combines traditional Scottish fare with international cuisines, catering to all tastes and preferences.





The city's efficient public transportation system and pedestrian-friendly layout make exploring Edinburgh a breeze. Families and visitors with kids will find it easy to navigate the city's charming streets and visit family-oriented attractions like the Camera Obscura and World of Illusions or enjoy leisurely strolls in the picturesque Princes Street Gardens.

Apartment Skye's location presents an exceptional opportunity for guests to immerse themselves in the heart and soul of Edinburgh. The apartment's proximity to iconic landmarks, cultural venues, and a bustling shopping district ensures an enriching and captivating experience, allowing guests to embrace the city's storied past and vibrant present. Whether seeking history, arts, or gastronomic delights, the location of Apartment Skye promises an extraordinary Edinburgh adventure filled with unforgettable memories and cherished moments.

Local Amenities

Nearest Airport	Edinburgh Airport (12 km)
Nearest Train Station	Edinburgh Waverley Train Station (1 km)
Nearest Supermarket	Sainsbury's Local (350 m)

## What we love

- Apartment Skye offers stunning vistas of Edinburgh Castle, providing a daily spectacle of the city's historic landmark
- With large windows and a grand interior, the apartment exudes regal charm, making guests feel like royalty
- Ideally located just minutes from Princes Street and the Royal Mile, the apartment offers easy access to Edinburgh's top attractions, shopping, dining, and cultural experiences

## What you should know...

- This property is unsuitable for those with mobility issues due to one flight of stairs up to the property
- We ask that the lead guest is of 30 years of age or older
- This apartment is unsuitable for stag parties, hen parties, young single-sex groups, or parties

# Terms & Conditions

- **Security deposit:** £500 paid via Superhog (external website) to the owner before arrival and refunded two weeks after departure, subject to full inspection.
- **Arrival time:** 16:00 - 21:00
- **Departure time:** 10:00
- **Energy costs included?:** Yes, included in the rental price.
- **Linen & towels included?:** Yes, included in the rental price.
- **Pets welcome?:** Not allowed.
- **Other Ts and Cs:** Please note that the lead guest is minimum 30 years.
- **End of stay cleaning available?:** Yes. However, guests are required to leave the accommodation clean, tidy and in the same condition as on their arrival. Any extra cleaning, laundry, maintenance and/or rubbish disposal required will be charged against the security deposit.
- **Smoking Allowed?:** Smoking & Vaping are not permitted.
- **Other 2:** High chairs can be hired at an additional cost. Please enquire during the booking process.
- **Heating costs included?:** Yes, included in the rental price.
- **Internet access?:** Wi-Fi internet access included.