

# Apartment Isla

**Region:** Edinburgh **Sleeps:** 6

---

## Overview

Apartment Isla offers a stylish and design-led property, promising an unforgettable experience. From its fashionable interior to its unbeatable view of Edinburgh Castle, this apartment will surely leave you thrilled with its elegant allure.

The interior layout of Apartment Isla exudes elegance and functionality, providing ample space for families or groups. The spacious living room, adorned with modern furniture and stunning artwork, serves as the perfect sanctuary to unwind and relax after exploring the city's wonders. The fully equipped kitchen with a large dining table and seating for up to six people offers a welcoming space for gathering and enjoying meals together.

Situated on the famous Castle Terrace, Apartment Isla boasts a prime location that puts you at the heart of Edinburgh's attractions. Within a mere five-minute walk, you'll find yourself on Princes Street, a bustling thoroughfare known for its shopping, dining, and lively ambience. The charming Grassmarket, a historic square surrounded by pubs, restaurants, and unique shops, is also within easy reach. For a deeper dive into the city's history, The Royal Mile, lined with historical landmarks, charming boutiques, and traditional Scottish pubs, is just ten minutes away.

Apartment Isla's central location makes it a perfect choice for anyone visiting Edinburgh, whether for business or leisure. The city's top attractions, including the majestic Edinburgh Castle, the vibrant Princes Street Gardens, and the iconic National Museum of Scotland, are all within easy access, providing a wealth of cultural experiences for visitors of all ages.

The apartment accommodates guests in three beautifully



appointed bedrooms, ensuring a restful and comfortable stay. The master bedroom features a sumptuous super king-size bed with an ensuite bathroom, providing a restful retreat. The second bedroom offers a king-size bed with an ensuite bathroom. In contrast, the third bedroom provides the flexibility of a king-size bed or twin beds with zip-link functionality, catering to individual preferences.

Apartment Isla is a true gem amidst Edinburgh's architectural splendour and historic charm. Its stylish interior, complemented by a perfect location, makes it an ideal choice for those seeking an unforgettable stay in the heart of this captivating city. Whether you are exploring the city's cultural riches or simply indulging in its lively ambience, Apartment Isla promises a truly memorable and cherished Edinburgh experience.

## Facilities

Wow Factor • Wi-Fi/Internet • Walk to Village • DVD • Romantic • City Homes & Apartments • Zoo • Kid-friendly museum • Kid-friendly excursions • Transfers Available • No car required • Recommended • Ideal for Babies & Toddlers • Ideal for Kids • Ideal for Teens • <1hr to Airport • Washing Machine • Tumble Dryer • Dishwasher • Microwave • Coffee Machine • Hairdryer • Tourist Towns & Villages • Historical Sites

# Interior & Grounds

## The Apartment

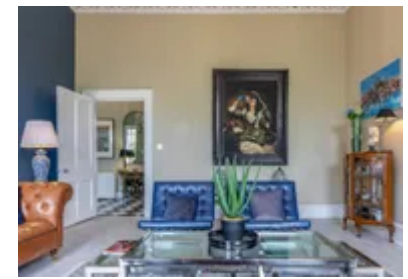
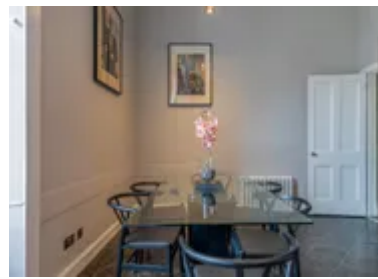
Stylish and design-led property, promising an unforgettable experience in Edinburgh's vibrant city centre.

### *Interior*

- Spacious Kitchen with Dining Room Table
- Living Room
- Master Bedroom: Super king-size bed with ensuite
- Bedroom 2: King-size bed with ensuite
- Bedroom 3: King-size or twin bed - zip & link
- Bathroom

### **Additional Facilities**

- Wi-Fi
- Dishwasher
- Coffee machine
- Washing machine and dryer
- Heating



## Location & Local Information

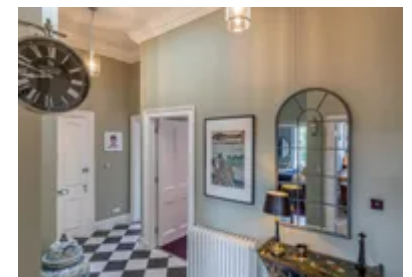
Apartment Isla's location on the famous Castle Terrace in Edinburgh is a true treasure, offering an enviable position that provides both convenience and a captivating view of the city's iconic Edinburgh Castle. This prime location places guests at the heart of the city's vibrant energy, surrounded by a plethora of attractions, historic landmarks, and lively entertainment.

Situated just five minutes from Princes Street, Apartment Isla offers easy access to one of Edinburgh's most bustling thoroughfares. Princes Street is renowned for its diverse shopping options, ranging from high-end retailers to charming boutiques, catering to every taste and style. It is also home to delightful restaurants, cafes, and bars, making it a favoured spot for locals and visitors alike to savour a delightful meal or indulge in some people-watching.

The charming Grassmarket is also within a short walking distance from Apartment Isla. Nestled amidst a labyrinth of cobblestone streets, this historic square is brimming with character, offering a delightful array of pubs, restaurants, and unique shops. Its vibrant atmosphere draws locals and tourists, making it an exciting place to explore and soak in Edinburgh's distinctive ambience.

For those seeking to delve deeper into Edinburgh's rich history and heritage, The Royal Mile awaits just a ten-minute stroll from the apartment. This historic street is lined with architectural marvels, including centuries-old buildings, cathedrals, and museums, offering a captivating journey through the city's past. The Royal Mile also features a charming blend of boutique stores, souvenir shops, and traditional Scottish pubs, making it a must-visit destination for a quintessential Edinburgh experience.

Apartment Isla's strategic location ensures easy access to the city's top attractions, including the majestic Edinburgh Castle. Perched atop Castle Rock, the iconic fortress dominates the skyline and symbolises Scotland's history and grandeur. Guests can explore its historic chambers,



learn about the city's royal past, and enjoy breathtaking views of the city from its battlements.

Apartment Isla's location on Castle Terrace immerses guests in the very heart of Edinburgh's allure. With its close proximity to major attractions, shopping districts, and vibrant ambience, guests can experience the city's multifaceted charm at their doorstep. Whether exploring historic landmarks or indulging in the city's cultural and culinary delights, Apartment Isla promises an enchanting and memorable Edinburgh adventure for all.

Local Amenities

Nearest Airport	Edinburgh Airport (12 km)
Nearest Town/City	Edinburgh Old Town
Nearest Train Station	Edinburgh Waverley Train Station (1 km)
Nearest Supermarket	Sainsbury's Local (400 m)
Nearest Restaurant	Ting Thai Caravan (160 m)
Nearest Bar/Pub	Shakespeare (140 m)
Sightseeing	Edinburgh Castle (650 m)



## What we love

- Apartment Isla offers a stunning and unbeatable view of Edinburgh Castle, providing a captivating backdrop to your stay
- The apartment's fashionable and design-led interior exudes luxury and elegance, ensuring guests a memorable and stylish experience
- Situated on the famous Castle Terrace, the property places you within minutes of Edinburgh's top attractions, making it a perfect hub for exploring the city's vibrant offerings

## What you should know...

- The apartment is on the second floor, and there is no lift
- We ask that the lead guest is of 30 years of age or older
- This apartment is unsuitable for stag parties, hen parties, young single-sex groups, or parties

# Terms & Conditions

- **Security deposit:** £500 paid via Superhog (external website) to the owner before arrival and refunded two weeks after departure, subject to full inspection.
- **Arrival time:** 16:00 - 21:00
- **Departure time:** 10:00
- **Energy costs included?:** Yes, included in the rental price.
- **Linen & towels included?:** Yes, included in the rental price.
- **Pets welcome?:** Not allowed.
- **Other Ts and Cs:** Please note that the lead guest is minimum 30 years.
- **End of stay cleaning available?:** Yes. However, guests are required to leave the accommodation clean, tidy and in the same condition as on their arrival. Any extra cleaning, laundry, maintenance and/or rubbish disposal required will be charged against the security deposit.
- **Smoking Allowed?:** Smoking & Vaping are not permitted.
- **Other 2:** High chairs can be hired at an additional cost. Please enquire during the booking process.
- **Heating costs included?:** Yes, included in the rental price.
- **Internet access?:** Wi-Fi internet access included.