

# Lachlan Apartment

**Region:** Edinburgh **Sleeps:** 2

---

## Overview

Lachlan Apartment offers a modern and bright urban retreat just a stone's throw away from the heart of Edinburgh's main sightseeing area, Princes Street. Located in the bustling and well-connected West End, this one-bedroom property provides a perfect blend of convenience and comfort, ideal for both leisure and business travellers. Guests can immerse themselves in the vibrant city life with easy access to fabulous shops, restaurants, cafes, theatres, and conference centres.

The interior layout of the Lachlan Apartment is designed with contemporary décor, providing a stylish and welcoming ambience. The living room features a leather sofa that easily converts into a double sofa bed, accommodating up to four guests in total. The fully fitted and equipped kitchen allows guests to easily prepare breakfast or a relaxing dinner. Two flat-screen TVs, one in the living room and one in the bedroom offer entertainment options for downtime, and the open-plan living area with full-length windows creates a bright and inviting space. The apartment also boasts high-speed WIFI and a comfortable desk, catering to guests who may be working during their stay.

The bright master bedroom presents a large double bed and ample storage, ensuring a peaceful and restful night's sleep. Guests can enjoy views over Shandwick Place, adding to the urban charm of the property. A modern family bathroom, complete with a bath and separate shower, provides convenience and functionality for guests.

Beyond the apartment's walls, the bustling West End neighbourhood offers a plethora of amenities. Guests can explore an array of bars, restaurants, coffee shops, chemists, and supermarkets, making daily essentials



easily accessible. Princes Street Gardens and the Edinburgh International Conference Centre are within a short walk for leisurely strolls or tranquil moments. The iconic Edinburgh Castle and The Royal Mile, filled with history and cultural wonders, are also within walking distance. Families with kids will appreciate the proximity to Edinburgh Zoo, just a short bus ride away.

Lachlan Apartment in Edinburgh's bustling West End offers a modern and comfortable haven close to the city's main attractions and amenities. With its contemporary design, well-equipped kitchen, and convenient access to transportation, it caters to both leisure and business travellers seeking a delightful home-away-from-home experience in this vibrant city.

## Facilities

Romantic • Walk to Village • City Homes & Apartments • Historical Sites • Special Offer • Has Discount • Wow Factor • <1hr to Airport • Wi-Fi/Internet • Washing Machine • Coffee Machine • Hairdryer • Tourist Towns & Villages • Dishwasher • Microwave • Satellite TV • Heating • Zoo • Kid-friendly museum • Kid-friendly excursions • Transfers Available • No car required

# Interior & Grounds

## The Apartment

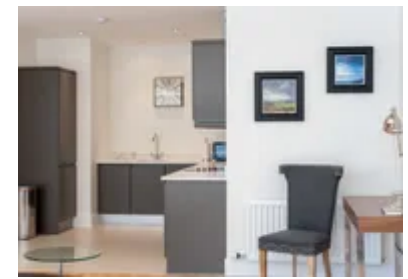
Lachlan Apartment offers a modern and bright urban retreat just a stone's throw away from the heart of Edinburgh's main sightseeing area, Princes Street.

### *Interior*

- Fully equipped kitchen
- Living room with double sofa bed
- Master Bedroom: Large double bed
- Family bathroom

### **Additional Facilities**

- Wi-Fi
- Smart TV
- Washing machine
- Dishwasher
- Heating



## Location & Local Information

Lachlan Apartment boasts a highly coveted location in the bustling and well-connected West End of Edinburgh, making it a sought-after destination for visitors seeking the best of the city's attractions and amenities. Situated just a stone's throw away from the iconic Princes Street, the apartment offers easy access to Edinburgh's main sightseeing area, ensuring a memorable and convenient stay.

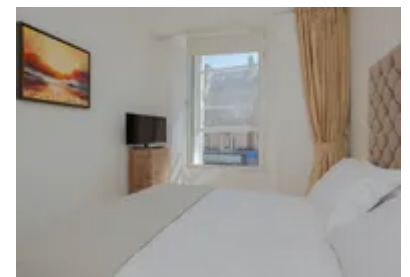
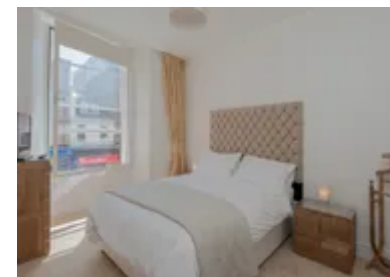
The West End neighbourhood itself is a vibrant and lively area, pulsating with an array of fabulous shops, restaurants, cafes, theatres, and conference centres. This vibrant atmosphere provides a perfect setting for guests to immerse themselves in the city's dynamic culture, indulge in culinary delights, and shop for unique souvenirs.

For business travellers, Lachlan Apartment offers added advantages. The apartment's high-speed WIFI and dedicated desk create an ideal working space, allowing guests to stay productive while still experiencing the city's vibrant energy. The proximity to the Edinburgh International Conference Centre is valuable for those attending business events and conferences.

The apartment's location also provides easy access to public transportation, with tram and bus stops conveniently located just outside the doorstep. This accessibility enables guests to easily explore the city and venture further afield to discover Edinburgh's hidden gems.

Stepping outside, guests will find themselves within walking distance of the tranquil Princes Street Gardens, offering a peaceful retreat amid the city's hustle and bustle. The nearby Edinburgh Castle, one of the city's most iconic landmarks, and The Royal Mile, steeped in historical significance, provide rich cultural experiences for history enthusiasts.

The West End neighbourhood is charming and offers an eclectic entertainment mix, from theatre performances to



live music venues. The area's diverse culinary scene caters to various tastes, making it a gastronomic haven for food enthusiasts.

Lachlan Apartment's location in Edinburgh's lively West End presents an ideal gateway to experience the city's bustling attractions and immerse in its vibrant culture. With its proximity to major landmarks, transportation hubs, and an array of entertainment and dining options, guests are afforded a genuinely enriching and convenient Edinburgh experience that will linger in their memories for years to come.

Local Amenities

Nearest Airport	Edinburgh Airport (12 km)
Nearest Train Station	Haymarket (700 m)
Nearest Supermarket	Sainsbury's Local (24 m)

## What we love

- This prime location is steps away from Princes Street for easy access to Edinburgh's main attractions
- The modern, bright ambience with high-speed Wi-Fi and a work desk is perfect for business travellers
- The bustling West End neighbourhood with shops, restaurants, cafes, Princes Street Gardens, and the Edinburgh International Conference Centre are all within a short walk

## What you should know...

- This property is situated on the first floor and is reachable by stairs only
- There is private, secure access to the apartment with an intercom and video screen access
- One member of the booking party must be over 25 years
- This apartment is unsuitable for stag parties, hen parties, young single-sex groups, or parties

# Terms & Conditions

- **Security deposit:** £500 paid via Superhog (external website) to the owner before arrival and refunded two weeks after departure, subject to full inspection.
- **Arrival time:** 15:30 - 19:00
- **Departure time:** 10:30
- **Energy costs included?:** Yes, included in the rental price.
- **Linen & towels included?:** Yes, included in the rental price.
- **Pets welcome?:** Not allowed.
- **Other Ts and Cs:** Please note that the lead guest is minimum 25 years.
- **End of stay cleaning available?:** Yes. However, guests are required to leave the accommodation clean, tidy and in the same condition as on their arrival. Any extra cleaning, laundry, maintenance and/or rubbish disposal required will be charged against the security deposit.
- **Smoking Allowed?:** Smoking & Vaping are not permitted.
- **Heating costs included?:** Yes, included in the rental price.
- **Internet access?:** Wi-Fi internet access included.