

Apartment Ella

Region: The South East **Sleeps:** 4

Overview

Apartment Ella is a newly refurbished one-bedroom flat that accommodates four. Surrounded by teeming hotspots of Central London, it couldn't be better located. A short walk takes you to Angel Underground Tube Station, allowing you to easily access the popular attractions of the city.

Blending a home-like charm with modern convenience, the apartment occupies the entire second floor of a lovingly resorted Grade II listed Georgian terraced house. Indoors, you're greeted by contemporary designs and indoor plants that ensure a refreshing vibe throughout the day.

The living area is a space of modern comfort, adorned with a soothing palette of hues. Large twin windows fill the space with ample sunshine, as colourful artwork keeps things bright. Make yourself cosy on the sofa bed and unwind with your favourite read. If you're working remotely, connect to the complimentary Wi-Fi. The room also has plenty of storage for your convenience.

Whip up delicacies in the white-washed, open-air kitchen. It's beautifully stocked with a stove, refrigerator, oven, coffee machine, dishwasher and microwave. Gather in the cosy dining area and enjoy intimate meals with views of the lush green outdoors. Breakfast essentials like sugar, coffee, granola and tea are stocked before your arrival.

After a fun day out in the city, relax in the cosy bedroom. Complete with a double-sized bed, picture window and smart TV, you're guaranteed a peaceful night's sleep.

There's also a sleek bathroom, which can be accessed through the living room. It comes with a shower area, towels and premium toiletries.

Soak in the tapestry of culture, heritage and culinary delights that London has to offer. From beloved neighbourhood joints to world-famous attractions (and everything in between), you're guaranteed a memorable time.

Facilities

Wi-Fi/Internet • Historical Sites • Hairdryer • Coffee Machine • City Homes & Apartments • Washing Machine • Easy By Train • Laptop Friendly Workspace • Modern • Kid-friendly excursions • Ideal for Kids • Dishwasher • Microwave • High Chair(s) • Tourist Towns & Villages



Interior & Grounds

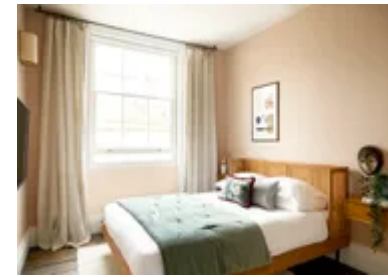
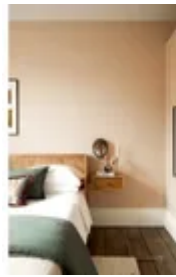
The Apartment

Interiors

- Open plan living and dining area
- Open plan kitchen, well-equipped
- Bedroom with double bed
- WC 1

Additional Facilities

- TV
- Wifi
- Toiletries
- Workdesk
- Kitchen essentials
- Iron
- Oven
- Fire extinguisher
- Baby cot and high chair (on request)



Location & Local Information

Spend days savouring delicious food, picturesque views and unforgettable adventures — London has so much to offer. From the famous Financial District to the captivating allure of East London, you're never too far from the city's prime attractions.

A two-minute walk takes you to Angel Tube Station, from where you can easily explore the neighbourhood via its well-connected underground network. Angel is a buzzing shopping and entertainment hub, offering a range of cocktails bars, British pubs and charming restaurants. The lively Chapel Market remains ever popular for stalls selling fresh produce, household items and fashion wear. If that's not enough, take a trip to Angel Central for its arsenal of retail brands.

Go on morning strolls along Regent's Canal, one of London's most beautiful walking trails. Enjoy moments of solitude in Islington Green, where trees date back to as far as 1808.

Spend your evenings dining at Exmouth Market, also located close by. You'll find cafes, boutique shops and a variety of entertainment to keep you occupied for hours. Its lively, hipster ambience and range of craft beer pubs draw people from all over town.

Next, take a trip to Camden Passage, a fascinating historic street nestled alongside Upper Street in Islington — and en route to Angel Station. Its array of shops, cafes and antique markets will leave you wanting more. No cars are permitted here, perfect for pedestrians to easily walk around.

Experience live music and gigs at Union Chapel, a majestic church also known for hosting charity events for the homeless. Its intricate Victorian Gothic architecture and high-quality acoustics make it a fantastic venue for music shows.

Local Amenities

Nearest Airport	London Heathrow Airport (30.9 km)
Nearest Train Station	Angel Station (300 m)
Nearest Supermarket	Marks and Spencer (400 m)
Nearest Restaurant	The Italo's Islington (140m)
Nearest Bar/Pub	Old Red Lion Theatre Pub (320m)
Nearest Restaurant	The Italo's Islington (140m)



Nearest Bar/Pub	Old Red Lion Theatre Pub (320m)
-----------------	------------------------------------

What we love

- Your hosts are always available to ensure you have a comfortable stay.
- Located within a Grade II listed Georgian terraced house, the flat is full of charm and character, perfectly melded with modern styles.
- There are several bus stops around, offering easy commutes to different parts of the city

What you should know...

- You have a bit of a climb to get to the apartment, as there is no lift.
- Located in central London, you may hear some commotion from the outside streets in the living room.
- You can request the sofa-bed in the living room to be made before your arrival.

Terms & Conditions

- **Security deposit:** Please note that this property manager works with SUPERHOG. Once your booking is confirmed, you will be contacted by SUPERHOG directly to verify yourself and finalise the process. In the unlikely event that SUPERHOG is unable to provide the necessary damages cover, you would be required to provide a physical damages deposit prior arrival.

- **Arrival time:** 15:00 - 20:00

- **Departure time:** 10:00

- **Energy costs included?:** Yes, included in the rental price.

- **Linen & towels included?:** Yes, included in the rental price.

- **Pets welcome?:** Not allowed.

- **Other Ts and Cs:** £45 per night per guest after 2.

- **Changeover day:** Flexible.

- **End of stay cleaning available?:** Yes. However, guests are required to leave the accommodation clean, tidy and in the same condition as on their arrival. Any extra cleaning, laundry, maintenance and/or rubbish disposal required will be charged against the security deposit.

- **Smoking Allowed?:** Smoking & Vaping are not permitted.

- **Minimum stay:** 90 days outside summer.

- **Heating costs included?:** Yes, included in the rental price.

- **Internet access?:** Wi-Fi internet access included.

- **Stag & Hen Do Allowed? :** Weddings, stag/hen parties and any special events are not allowed.