

Kingsley Apartment

Region: The South East Sleeps: 4

Overview

Nestled in the heart of Central London, Kingsley Apartment is a stylish retreat just minutes from Angel Underground Tube Station. Set within a beautifully restored Grade II listed Georgian terrace, this one-bedroom apartment welcomes up to four guests, offering a serene haven amidst the city's vibrant energy.

Stepping inside, you're immediately embraced by a sense of calm. The interiors are a perfect blend of Scandinavian simplicity and timeless elegance, evoking the pages of a high-end design magazine. Crisp white walls and light wooden flooring create an airy ambience, while floor-to-ceiling sash windows bathe the space in natural light.

The living area is a delightful spot to unwind, where soft, neutral tones are punctuated by carefully chosen accents. A plush sofa bed invites you to sink in with a book or a glass of wine, while a dedicated workspace ensures you stay connected should you need to. Free Wi-Fi is available throughout, making remote work or streaming your favourite shows effortlessly convenient.

Flowing seamlessly from the lounge, the open-plan kitchen and dining space is designed for effortless living. The contemporary kitchen boasts sleek cabinetry and granite countertops, fully equipped with modern appliances, including an oven, microwave, and refrigerator. Whether you're brewing a fresh cup of coffee or preparing a leisurely meal, you'll find all the essentials at your fingertips. Gather around the rich walnut dining table for intimate dinners or relaxed morning breakfasts before heading out to explore the city's delights.

At the rear of the apartment, the bedroom offers a peaceful sanctuary, dressed in dewy white linens and tactile textures for ultimate comfort. The double bed promises a restful sleep, while a large picture window ensures the space remains bright and inviting. An en-suite bathroom completes the retreat, fitted with fresh towels and indulgent toiletries to refresh and rejuvenate after a day of adventure.

Although there is no private outdoor space, the apartment's enviable location places you within walking distance of leafy parks, charming cafés, and world-class attractions. Whether you're drawn to the historic streets of Islington or the cultural hotspots of Covent Garden, Kingsley Apartment provides the perfect base for your London stay—a fusion of contemporary charm and classic heritage, waiting to be explored.



Facilities

Ideal for Kids • Walk to Village • City Homes & Apartments • Wi-Fi/Internet
• Easy By Train • Washing Machine • Coffee Machine • Hairdryer • Laptop
Friendly Workspace • Dishwasher • Microwave • Kid-friendly excursions •
Playground nearby • High Chair(s)

Interior & Grounds

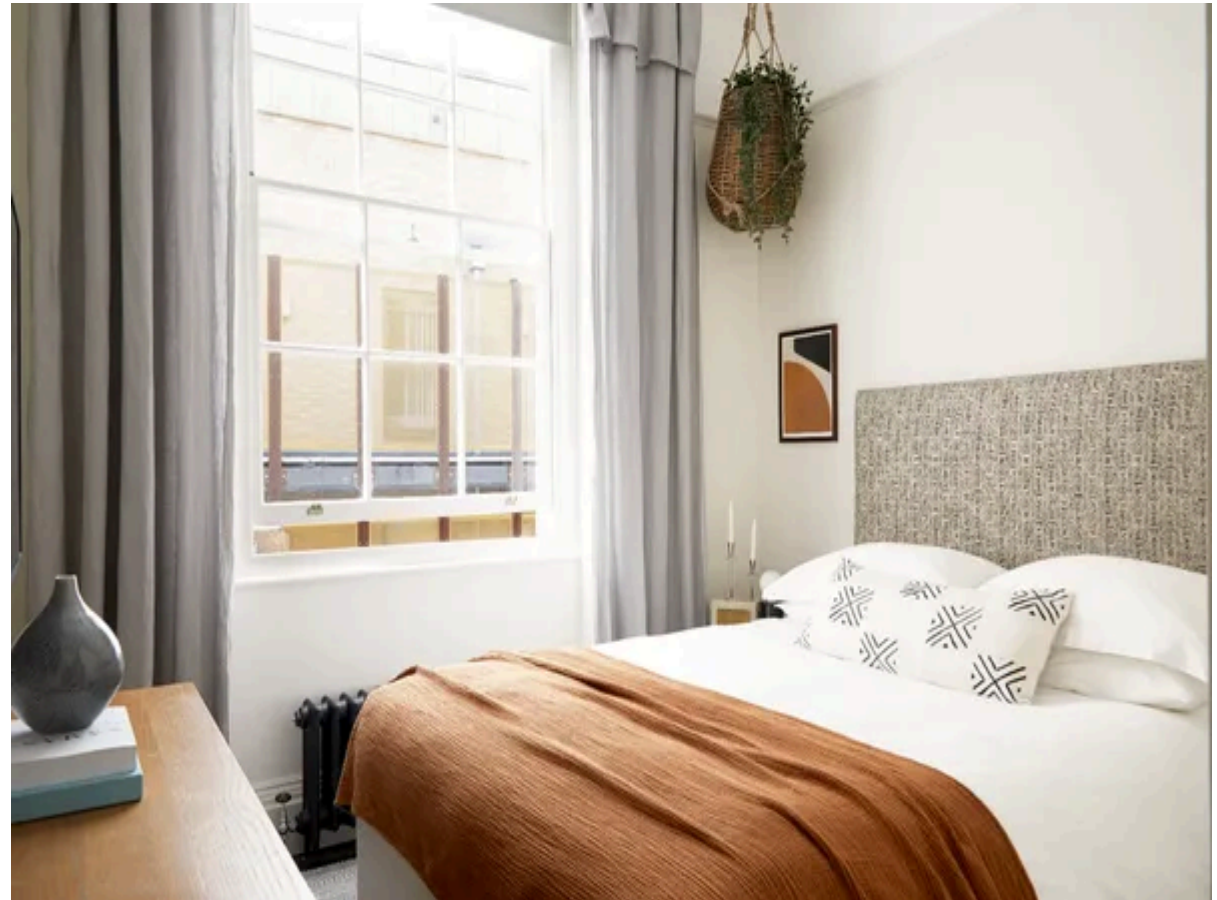
The Apartment

Interior

- Open plan living and dining area
- Open plan kitchen, well-equipped
- Bedroom with double bed
- WC 1

Additional Facilities

- TV
- Wi-Fi
- Toiletries
- Workdesk
- Kitchen essentials
- Iron
- Hair Dryer
- Washer
- Coffee maker
- Microwave
- Oven
- Refrigerator
- Fire extinguisher



Location & Local Information

London is a treasure trove of delectable cuisines, incredible views and thrilling adventures. From the iconic Financial District to the inviting allure of East London, you're guaranteed an unforgettable time.

A two-minute walk takes you to Angel Tube Station, from where you can easily access the other regions of the city via its well-connected underground network. Angel is a lively shopping and entertainment complex offering a slew of cocktails, bars, British pubs and fantastic restaurants. The charming Chapel Market remains popular for stalls selling fresh produce, household items and fashion wear. If that's not enough, head to Angel Central for its range of retail brands.

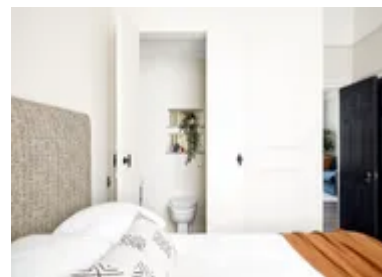
Go on morning strolls along Regent's Canal, one of London's most picturesque walking trails. Enjoy afternoons of tranquillity in Islington Green, boasting trees dating back to 1808.

Spend your evenings uncovering the colourful dining spots of Exmouth Market, nestled a short distance away. You'll also find a wide variety of boutique shops that will keep you entertained for hours. Exmouth Market is known for its lively, hipster atmosphere and range of craft beer pubs.

Next, take a trip to Camden Passage, a quaint historic street nestled alongside Upper Street in Islington — and en route to Angel Station. Spend time exploring charming shops, tucked-away cafes and a host of antique markets. No cars are allowed here, making it ideal for pedestrians to walk around.

Experience live music and gigs at Union Chapel, a majestic church also known for hosting charity events for the homeless. Its intricate Victorian Gothic architecture and high-quality acoustics make it a fantastic venue for music shows.

Local Amenities



Nearest Airport	London Heathrow Airport (30 km)
Nearest Train Station	Angel Underground Station (230 m)
Nearest Supermarket	Tesco Express (650 m)
Nearest Restaurant	The Italo's Islington (140m)
Nearest Bar/Pub	Old Red Lion Theatre Pub (320m)

What we love

- Think bright, airy spaces with sleek wooden touches, like something straight out of a design magazine. Pure comfort with a modern edge!
- Just minutes from Angel Tube Station, you're perfectly placed for exploring everything from historic landmarks to trendy cafés and boutiques.
- A serene bedroom, a welcoming living space, and a fully equipped kitchen make it the perfect home-away-from-home for up to four guests.

What you should know...

- You may hear some commotion from outside if you use the sofa bed in the living room.
- Be sure to inform the hosts if you'd like the sofa bed to be made up before your arrival.
- There are several bus stops near the apartment, offering easy commutes to different parts of the city.

Terms & Conditions

- **Security deposit:** Please note that this property manager works with SUPERHOG. Once your booking is confirmed, you will be contacted by SUPERHOG directly to verify yourself and finalise the process. In the unlikely event that SUPERHOG is unable to provide the necessary damages cover, you would be required to provide a physical damages deposit prior arrival.

- **Arrival time:** 15:00 - 20:00

- **Departure time:** 10:00

- **Energy costs included?:** Yes, included in the rental price.

- **Linen & towels included?:** Yes, included in the rental price.

- **Pets welcome?:** Not allowed.

- **End of stay cleaning:** Standard changeover clean included in the price. Guests are required to leave the accommodation clean, tidy and in the same condition as on their arrival. Any extra cleaning, laundry, maintenance and/or rubbish disposal required will be charged against the security deposit.

- **Smoking Allowed?:** Smoking & Vaping are not permitted.

- **Heating costs included?:** Yes, included in the rental price.

- **Internet access?:** Wi-Fi internet access included in the rental price.

- **Stag & Hen Do Allowed? :** Weddings, stag/hen parties and any special events are not allowed.