

Apartment Peyton

Region: The South East **Sleeps:** 2

Overview

Admire London from the stunning and private rooftop of this top-floor Covent Garden apartment. As you step inside Apartment Peyton, you are immediately welcomed by a sense of charm and character, a true oasis in the heart of the city.

Wander through the inviting living space, where boutique design meets comfort. Thoughtfully curated artwork and stylish décor create a warm and intimate atmosphere, perfect for unwinding after a day exploring the capital. A cosy sofa sits elegantly in the lounge area, an ideal spot to relax with a book or a glass of wine. Just beyond, the kitchen, though compact, is fully equipped with all the essentials needed to prepare a delightful meal.

The bedroom is a serene retreat, complete with a plush king-size bed and a memory foam mattress, ensuring a restful night's sleep. Subtle lighting and tasteful furnishings make this space feel instantly homely. Adjacent to the bedroom, the sleek bathroom offers a modern shower, sink, and toilet, providing everything you need to freshen up before heading out to explore.

The true highlight of Apartment Peyton, however, is the private rooftop terrace. Ascend above the bustling streets and step onto your exclusive outdoor haven. Whether you're starting your morning with a coffee as the city awakens, or winding down with a sunset drink, the rooftop offers breathtaking views over London's skyline.

Perfectly situated in the heart of Covent Garden, you're just moments away from world-renowned theatres, boutique shops, lively pubs, and historic landmarks. A short stroll brings you to the famous Covent Garden Market, where street performers and artisanal stalls create a vibrant atmosphere. The Royal Opera House, National Gallery, and Trafalgar Square are all within walking distance, making this the perfect base to immerse yourself in London's rich culture and heritage.

Whether you're visiting for business or leisure, Apartment Peyton offers a stylish and comfortable retreat in one of the most desirable locations in the city. Step inside, make yourself at home, and experience London from a truly special perspective.

Facilities

Wi-Fi/Internet • TV • Hairdryer • Coffee Machine • City Homes & Apartments • Washing Machine • Wow Factor • Laptop Friendly Workspace • Not For Little Ones • <1hr to Airport • Tumble Dryer • Dishwasher • Microwave • High Chair(s)



Interior & Grounds

The Apartment

Interior

- Open-plan living and dining
- Kitchen, well-equipped
- Bedroom 1 with king-size bed
- WC

Additional Facilities

- TV
- Wi-Fi
- Kitchen essentials
- Washer/dryer
- Microwave
- Oven
- Stove
- Coffee maker
- Toiletries



Location & Local Information

From the thrills of theatre and the flavours of international cuisine to an afternoon of retail therapy, you've got it all. Apartment Peyton is set in an unbeatable location, close to some of London's most famous attractions.

While Covent Garden offers a fascinating deep dive to art and history lovers, you're always close to other London neighbourhoods. Experience the bustling energy of Leicester Square, indulge in a plethora of entertainment at Piccadilly Circus and take advantage of the arsenal of attractions available at Tottenham Court Road.

Spend a day exploring the lively theatre and entertainment district of Covent Garden. Neal St is only a 2-minute stroll away from Covent Garden market, where Victorian architecture artfully blends with a vibrant mix of craft stalls, exclusive boutiques and street performances. While you're here, remember to visit the renowned Royal Opera House.

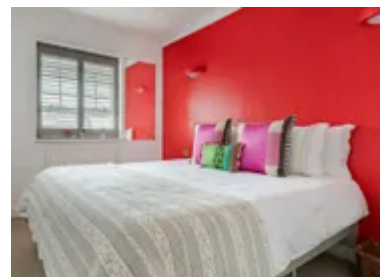
A brisk walk will take you to gems like The National Gallery and Trafalgar Square. The convenience continues beyond there. Covent Garden Underground Station is just at the end of the road with a direct connection to and from Heathrow Airport through the Piccadilly line.

Dining options are also plenty in this teeming neighbourhood, with popular restaurants like Carluccio's and The Ivy serving their famously delectable menus.

Theatre enthusiasts are promised a wonderful time with the abundance of famous venues nearby.

The picturesque River Thames, with its captivating South Bank attractions and the renowned 10 Downing Street are all within striking distance. If you're in the mood for an adventure beyond the city, the Charing Cross Mainline Station allows easy access.

Local Amenities



Nearest Airport	London Heathrow Airport (26 km)
Nearest Town/City	Covent Garden
Nearest Train Station	Covent Garden Underground Station (250 m)
Nearest Supermarket	Tesco Express (800 m)
Nearest Restaurant	The Barbary (98 m)
Nearest Bar/Pub	The Escapologist Bar (170 m)
Sightseeing	The British Museum (550 m)

What we love

- Stay in the heart of Covent Garden, just steps from theatres, boutique shops, and iconic landmarks like Trafalgar Square and the Royal Opera House.
- Soak up breathtaking London views from your own secluded terrace, perfect for morning coffee or evening drinks.
- Boutique interiors, unique artwork, and a comfy king-size bed make this stylish apartment a true city oasis.

What you should know...

- While check-in is around the clock, if you arrive after 9 p.m., there may be an additional charge.
- You have to take the steps to reach the terrace from the apartment.
- The apartment is not child-friendly and is better suited to couples.

Terms & Conditions

- **Security deposit:** Please note that this property manager works with SUPERHOG. Once your booking is confirmed, you will be contacted by SUPERHOG directly to verify yourself and finalise the process. In the unlikely event that SUPERHOG is unable to provide the necessary damages cover, you would be required to provide a physical damages deposit prior arrival.

- **Arrival time:** 15:00 - 20:00

- **Departure time:** 10:00

- **Energy costs included?:** Yes, included in the rental price.

- **Linen & towels included?:** Yes, included in the rental price.

- **Pets welcome?:** Not allowed.

- **End of stay cleaning available?:** Yes. However, guests are required to leave the accommodation clean, tidy and in the same condition as on their arrival. Any extra cleaning, laundry, maintenance and/or rubbish disposal required will be charged against the security deposit.

- **Smoking Allowed?:** Smoking & Vaping are not permitted.

- **Heating costs included?:** Yes, included in the rental price.

- **Internet access?:** Wi-Fi internet access included.

- **Stag & Hen Do Allowed? :** Weddings, stag/hen parties and any special events are not allowed.