

Wren Apartment

Region: The South East **Sleeps:** 4

Overview

Situated in the heart of Shoreditch, one of London's most creative and energetic neighbourhoods, Wren Apartment is a stunning industrial-style loft that blends character with contemporary comfort. With two beautifully designed bedrooms and two bathrooms, it's the perfect retreat for small groups, families, or professionals looking to immerse themselves in this vibrant area. From world-class restaurants and buzzing cocktail bars to independent boutiques and inspiring street art, Shoreditch offers an eclectic mix of culture, cuisine, and creativity right on your doorstep.

Step inside Wren Apartment, and you are immediately welcomed by a sense of space and light. The high ceilings and expansive windows flood the interiors with natural light, while the white-painted wooden floors enhance the airy feel. Designed by the renowned Danish firm Menu Spaces, the apartment celebrates its industrial heritage with exposed metalwork, sleek modern finishes, and thoughtfully curated furnishings that strike a perfect balance between style and comfort.

Moving through to the main living space, you'll find an expansive open-plan lounge, dining, and office area. The living room is an inviting spot to unwind, featuring a plush corner sofa, an ultra-modern chaise lounge, and a large smart TV for cosy evenings in. A raised reading nook offers a charming escape to enjoy a book while soaking in views of Shoreditch's lively streets. The dining area, with its mix of contemporary and vintage-inspired chairs, seats six and doubles as an ideal workspace for those working remotely.

The sleek, fully equipped kitchen is a dream for anyone who loves to cook. With glossy units, high-spec appliances, and ample counter space, it's as practical as it is stylish. Whether preparing a leisurely breakfast or an indulgent dinner, everything you need is at your fingertips.

At the front of the apartment, the master bedroom is a serene retreat with a sumptuous king-size bed, a cosy armchair, and a charming high bistro table, perfect for sipping your morning coffee while gazing out over the city. A striking geometric partition leads to a dedicated dressing area with fitted wardrobes, a cheval mirror, and an additional single bed. The second bedroom, accessed from the living space, features a comfortable single bed, a stylish coffee table, and a cosy reading nook.

Facilities

Wi-Fi/Internet • Laptop Friendly Workspace • City Homes & Apartments • Ideal for Kids • Pets on Request • Washing Machine • Dishwasher • Coffee Machine • Hairdryer • TV



Interior & Grounds

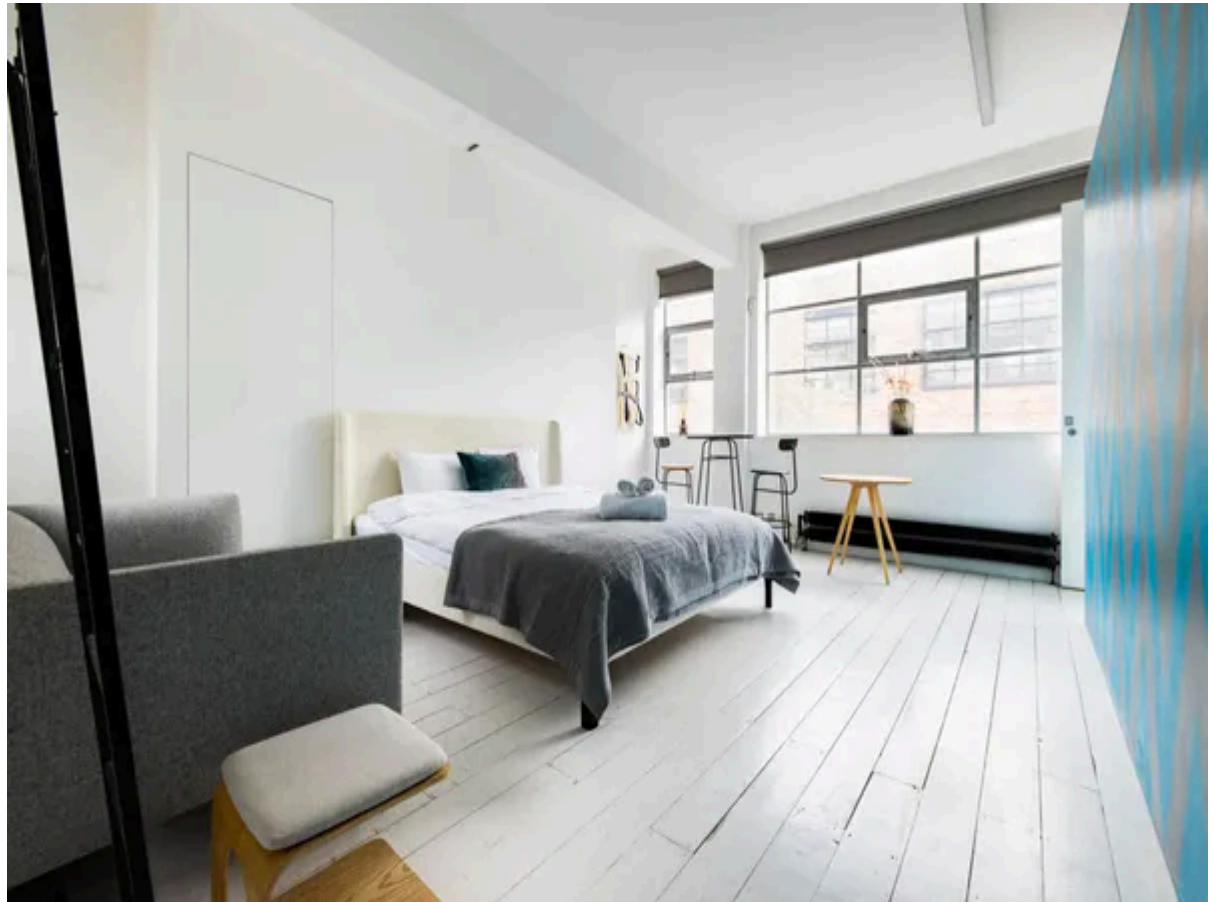
The Apartment

Interior

- First-floor Apartment
- Two bedrooms
- Two bathrooms

Additional Facilities:

- Wi-fi
- Heating
- Washing Machine
- Iron
- Hairdryer
- Cable television
- Television
- Coffee Maker
- Refrigerator
- Dishwasher
- Oven
- Stove



Location & Local Information

Known for its artistic and creative atmosphere, with plenty of attractions, you will always be interested in Shoreditch.

Famous for its street art scene, with colourful and unique graffiti adorning many of its walls, you need to wander through the surrounding streets to discover impressive murals and urban art installations by well-known artists. Who knows? You may even find a Banksy or a Thierry Noir!

Not far from Wren Apartment is the well-known Brick Lane. A bustling street it is famous for its diverse culinary options, vintage shops, markets and curry houses. On a Sunday, Brick Lane market offers a mix of street food, vintage clothing and antiques.

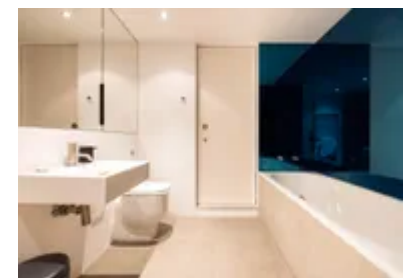
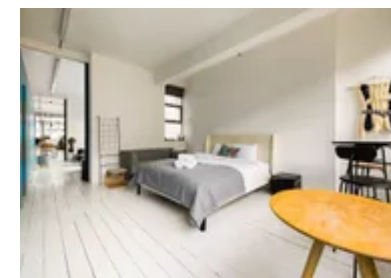
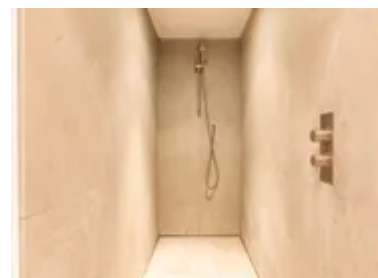
Back in 2011, Shoreditch was the place where Boxpark launched its first pop-up shopping mall. This place is definitely different from your run-of-the-mill shopping centre! Built from shipping containers, it effortlessly fuses the concepts of the modern street food market and pop-up shopping. Its unique approach to shopping offers a variety of familiar and independent brands along with the convenience of stopping for a bite to eat.

Continuing the trendy and hip vibe, nearby, you will find The Old Truman Brewery. Now a creative space, it hosts various events, markets, art exhibitions, and food festivals.

Have you noticed a theme here? The Shoreditch Street Food Market is the place for foodies to go. Here, you will find a wide range of international cuisines and is the perfect spot to try out unique dishes and flavours.

Although Shoreditch has everything to offer and can be explored on foot, those who would like to travel further afield and visit some of London's iconic landmarks, Old Street, Liverpool Street and Shoreditch high street stations are all nearby and offer access to both the rail and underground network systems.

Approximately two miles south of Shoreditch is The Tower



of London, a UNESCO World Heritage site. Found on the north bank of the river Thames, it was originally constructed by William the Conqueror after his conquest in 1066. Over the centuries, it has had many uses, including a Royal residence, a prison, an armoury, a treasury and even a menagerie. Today, it is an iconic attraction that functions as an armoury, housing a vast collection of weapons, armour, and military equipment. The Crown Jewels have been kept at the Tower of London since the 17th century. They are displayed in the Jewel House, which is heavily guarded and is still a popular attraction for tourists. For visitors interested in its slightly gory past, you will learn about the many high-profile prisoners and executions, such as Anne Boleyn, Henry VIII's second wife.

Local Amenities

Nearest Airport	London Heathrow Airport (32 km)
Nearest Train Station	Shoreditch High Street Overground Station (850 m)
Nearest Supermarket	Tesco Express (55 m)
Nearest Restaurant	Dishoom Shoreditch (320m)
Nearest Bar/Pub	The Old Blue Last (142m)
Nearest Restaurant	Dishoom Shoreditch (320m)
Nearest Bar/Pub	The Old Blue Last (142m)
Nearest Restaurant	Dishoom Shoreditch (320m)
Nearest Bar/Pub	The Old Blue Last (142m)
Nearest Restaurant	Dishoom Shoreditch (320m)
Nearest Bar/Pub	The Old Blue Last (142m)

What we love

- We love the modern Danish design of Wren Apartment. Its industrial-style loft layout with high ceilings and large windows creates a spacious and welcoming vibe, as well as flooding the apartment with natural light.
- Shoreditch is a must for artistic and creative types. It is a vibrant and hip area to explore with street upon street of impressive murals and urban art installations by well-known artists. A plethora of pubs, restaurants, bars and cafes to experience means you will never be stuck for something to do.
- Excellent overground and underground transport links make visiting London's iconic landmarks a breeze.

What you should know...

- The property's central location in one of London's busiest neighbourhoods, outside noise can be expected. The Shoreditch landscape is constantly evolving, so please be aware that there may be construction noise during the day.
- Although the apartment is flooded with light thanks to its large windows, roller blinds in the living areas and blackout blinds in the bedrooms provide the home with privacy and a cosy atmosphere.

Terms & Conditions

- **Security deposit:** Please note that this property manager works with SUPERHOG. Once your booking is confirmed, you will be contacted by SUPERHOG directly to verify yourself and finalise the process. In the unlikely event that SUPERHOG is unable to provide the necessary damages cover, you would be required to provide a physical damages deposit prior arrival.

- **Arrival time:** 15:00 - 20:00

- **Departure time:** 10:00

- **Energy costs included?:** Yes, included in the rental price.

- **Linen & towels included?:** Yes, included in the rental price.

- **Pets welcome?:** On request only and with prior agreement with the owner.

- **End of stay cleaning available?:** Yes, standard changeover clean included. Guests are required to leave the accommodation clean, tidy and in the same condition as on their arrival. Any extra cleaning, laundry, maintenance and/or rubbish disposal required will be charged against the security deposit.

- **Smoking Allowed?:** Smoking & Vaping are not permitted.

- **Heating costs included?:** Yes, included in the rental price.

- **Internet access?:** Wi-Fi internet access included in the rental price.

- **Stag & Hen Do Allowed? :** Weddings, stag/hen parties and any special events are not allowed.