

Knoetzie Castle

Region: Knysna **Sleeps:** 12

Overview

Enjoying a phenomenal, prestigious location in Knoetzie near Knysna with sublime panoramic views of the Indian Ocean, Knoetzie Castle offers a fantastic holiday experience for up to twelve guests. It enjoys the perfect location to bridge the gap between generations or holiday with your favourite friends. This unique property offers you the chance to stay in an extremely characterful castle that was actually only built in the 1960s. It is the perfect abode for a spot to switch off, to spend time with your loved ones and to relax and reinvigorate. Its charm and character come in lavish abundance, married with a fantastic array of vintage furnishings. It comes with six enchanting bedrooms, six bathrooms and atmospheric living spaces. Expansive sea views will entice your gaze while you dine alfresco or relax with glasses of delicious chilled South African wine.

Knoetzie Castle hugs the cliffs above the Indian Ocean in the quiet hamlet of Knoetzie. Surrounding the castle are rivers, estuaries, a lush forest and a sensational beach. Sitting on the Garden Route, you will enjoy sensational scenic beauty. This idyllic location looks like something from a fairy story, with various castles sprinkled on the hillside. The castle is ten minutes east of Knysna, one of the top holiday destinations on the Garden Route. With its rich cultural heritage, there is something for everyone. Blissful sandy beaches, beautiful forest trails including the magical Eco-Trail, a wide array of activities on land and water, wild elephants, an exquisitely beautiful lagoon, nature reserves and a fine dining scene offer the perfect balance. An intoxicating mix of whale watching and dolphin tours, golf, hiking and lazy beach days are all enjoyed in this mesmerising area.

The interior of the Knoetzie Castle is cosy, characterful and beautifully furnished. The living room offers exposed



stone and brick walls, a beautiful ceiling and an open fireplace for when a chill descends or if you want to enjoy a crackling castle atmosphere. You will discover a comfy Chesterfield-styled sofa, rattan armchairs and a delightful built-in seating area. A smart television is provided so that you can cosy up with Netflix. Adjoining the living room is a charming circular dining area and a separate kitchen diner, a rustic wonder with excellent appliances, open shelving and a large dining table, perfect for joyful meals together.

The castle offers six beautiful bedrooms, three of which are in the main building of the castle and three which are on the right side of the castle. Sleeping in a turret on cloud-like beds is both romantic and charming. The north turret room offers flexible sleeping arrangements with twin beds that can be set up as a kingsize bed. It comes with exposed stone walls, stunning views and a smart ensuite bathroom with a large walk-in shower. It is accessed via steep wooden steps. The downstairs bedroom sits just off the main lounge with a lavish kingsize bed adorned with luxury linens. It too can be converted to twin beds. There is a separate shower room which can also be easily accessed from the living room. The south turret bedroom also offers flexible sleeping and enjoys an ensuite bathroom. It is accessed from the main living room. The dreamy honeymoon suite is reached via stone steps on the outside of the castle's west wall. It boasts a fabulous, vintage, kingsize four-poster bed, an additional day bed and a large ensuite bathroom. The Hemmingway room offers a sumptuous queen-sized bed and an ensuite shower room. It is reached from the main garden area. The Tower bedroom sits at the top of wooden exterior steps, just off the main garden area, with its lavish queen size bed, ensuite shower room and wood-burning ceramic stove. Each room offers a wonderful, warm ambience and incredible character. You can soak your stresses away in one of the freestanding baths or take a power shower to remove the fine silvery-white sand after your beach days.

Outside, you can dine with a view, enjoy a glass of your favourite tippie in a beautiful sunny spot or hide in the shade with your holiday book. The beautifully landscaped gardens invite relaxation and rejuvenation. There is also a roof terrace where the already sublime Indian Ocean

vistas get even better! From here, you may even see dolphins feeding and playing in the waves directly in front of Knoetzie Beach if you wake early. You will never miss a moment of coastal bliss at Knoetzie Castle. The directly adjacent beach with its flawless sand and crystalline, impossibly blue water beckons and the lush green forest calls!

Facilities

Ground Floor Bed & Bath • Wi-Fi/Internet • Walk to Beach • Beachfront • Not for little ones • Chateaux & Castles • Golf Villa • Beach Nearby • Great Value • Ideal for Teens • <1hr to Airport • Safety Deposit Box • Satellite TV • Working Fireplace/Woodburner • Parking Space • Outstanding Landscapes

Interior & Grounds

Main Building

Ground Floor

- Ample living room with various seating areas, fireplace and TV
- Well equipped kitchen with dining area
- Shower room
- Bedroom with double bed

Mezzanine

- Bedroom with double bed and en-suite shower room
- Bedroom with double bed and en-suite bathroom with bath

Annexe

- Bedroom with double bed and en-suite bathroom with bath
- Bedroom with double bed and en-suite bathroom with bath
- Bedroom with double bed and en-suite shower room

Exterior Grounds

- Large garden area
- Access to the beach
- Various sun loungers
- Outdoor dining
- Garden furniture
- Parking space

Additional Facilities

- Wi-Fi connection
- Rooftop terrace
- Satellite TV
- Safe box



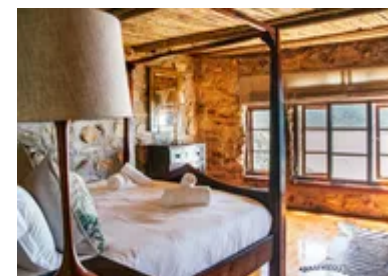
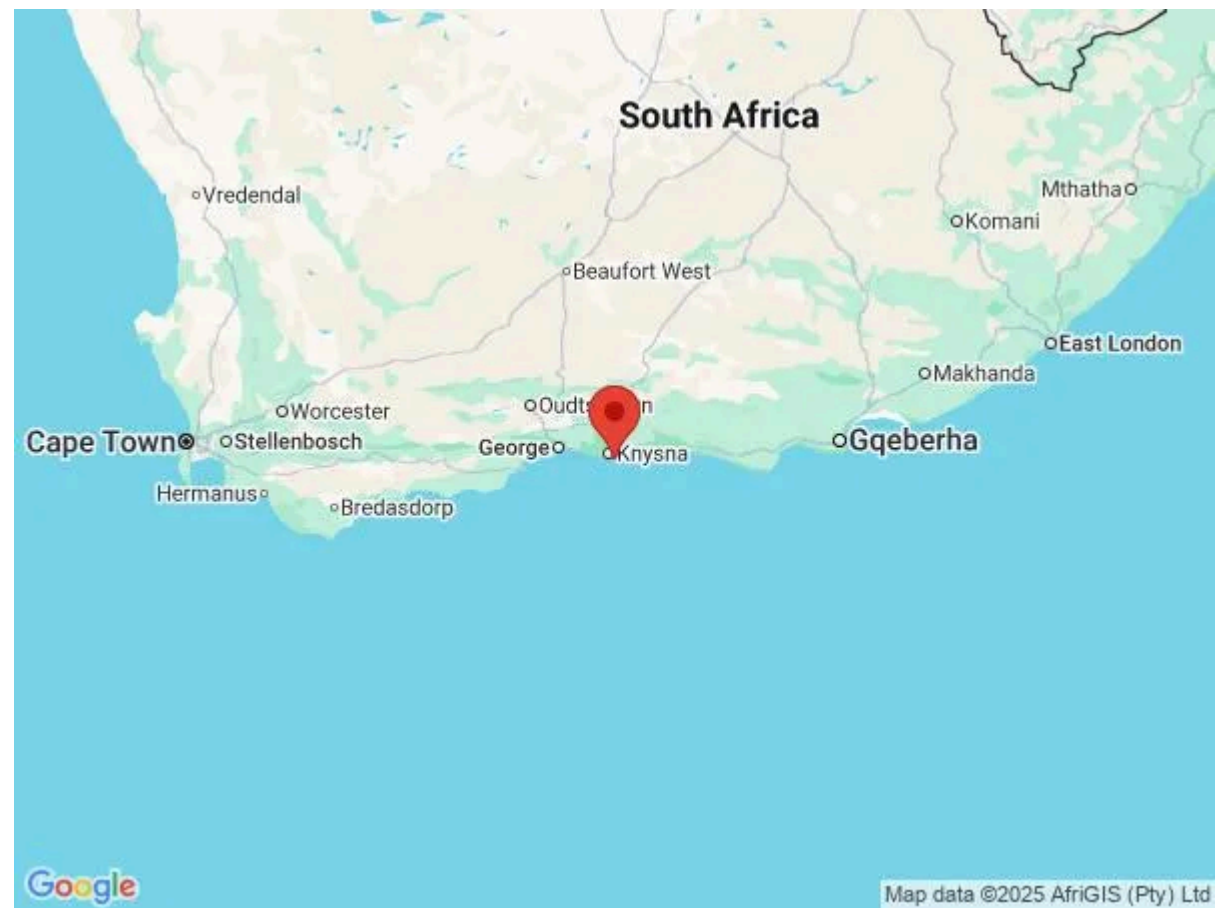
Location & Local Information

Knoetzie Castle sits in the delightful hamlet of Knoetzie on the Garden Route in Southern Africa, the perfect location for a dream holiday. Knoetzie enjoys intoxicating scenery and a pristine, secluded beach that lies in a hidden bay proudly encircled by attractive castles. It is bordered by the lush forest of the Sinclair Nature Reserve. There is a large variety of flora and fauna and a quiet estuary. Knoetzie is peaceful, beautiful and tranquil. Many of the properties have been in the same family for generations.

Just minutes away is the town of Knysna. There are plenty of activities available in this wonderful town. A highlight is the Eco-Trail, a fabulous nature trail through the protected Sinclair Nature Reserve. Starting from the Knysna Lagoon, you can head out through the breaking waves to look for whales or dolphins with an experienced skipper.

Embracing the exquisite beautiful lagoon and surrounded by forests, the town was formally the centre of the timber industry, supplying yellowwood and stinkwood for railway lines, shipping and house-building. It enjoys some unique shops specialising in woodwork and furniture, as well as plenty of artisan bakeries and local charcuteries. There are luxury spas for some indulgent me time and wonderful restaurants, including sea food restaurants, family-run eateries, five-star restaurants and outdoor food stalls. You will experience live music, local craft beers and craft gin. With a rich history and proud cultural heritage, you will enjoy a lively atmosphere and a very warm welcome. You should not miss a boat trip on the lagoon, the Knysna Head viewpoints for astonishing panoramic vistas, a visit to Featherbed Nature Reserve on the Western Heads, alfresco dining at one of the many lagoonside restaurants and hiking or cycling in the Knysna forest.

Golfers are in for a treat at the nearby Pezula Championship Golf Course or the other championship golf courses within forty-five minutes. Pezula Golf Course is renowned for its breathtaking beauty and wonderful gardens. It covers 254 hectares on the Knysna clifftops with stunning views of the Knysna Lagoon and the Indian Ocean. The par 72 course is ideal for players of all levels



and comes with luxury golf carts and flyover demos of each hole.

The Knysna Forest is a dreamy place sprinkled with gentle streams, towering trees and rare birds, a haven for birdwatchers. You can hike along one of the well-maintained trails, take a guided tour or take a body-powdered scooter. Guests enjoy family picnics under the majestic canopy and look out for birdlife and wildlife. You might even meet one of the famous forest elephants.

Knysna is at the centre of the Garden Route National Park Lakes Section, an area crisscrossed by rivers, lakes and estuaries. You can discover these amazing waterways by boat or canoe, enjoying the birdlife. Anglers can fish for dinner. The Knysna Lagoon is actually an estuary and natural home of the Knysna seahorse and where the famous Knysna oysters were first cultivated in the 1940s. Boat trips include water skiing, trips up the Knysna River and romantic sunset cruises. You might meet migrating whales, playful dolphins and much more marine life.

Local Amenities

Nearest Airport	George Airport (81 km)
Nearest Airport 2	Plettenber Bay Airport (33 km)
Nearest Bar/Pub	The Knysna Gin Distillery & Brewery (9 km)
Nearest Beach	Noetzie Beach (150 m)
Nearest Golf	Pezula Championship Course (Knysna) (5 km)
Nearest Restaurant	Bosun's Arms (9 km)
Nearest Supermarket	So Ca (9 km)
Nearest Town/City	George (74 km)
Nearest Village	Knysna (11 km)

What we love

- Well, who wouldn't want to experience a holiday in a castle and a bedroom in a turret! The castle is characterful and utterly charming
- The castle comes with a beautiful landscaped garden with the most tranquilising views of the Indian Ocean, as well as delightful alfresco dining and lounge areas
- Knoetzie and Knysna are wonderful locations with an endless array of outdoor activities, including watersports, boat trips, fishing, hiking and cycling. They offer a rich culture and a very warm welcome

What you should know...

- Most of the bedrooms are reached via steep staircases, so this property is not ideal for guests with mobility issues
- In addition, some of the bedrooms are reached via outside staircases, so you do need to consider where you will sleep little ones if you are looking for a family holiday
- The castle enjoys immense character and charm, coming with vintage furnishings and a rustic feel rather than being glamorous and sophisticated

Terms & Conditions

- **Security deposit:** Credit card details are required 2 weeks prior to departure for pre-authorisation.
- **Arrival time:** 4 pm
- **Departure time:** 10 am
- **Energy costs included?:** Yes, included in the rental price.
- **Linen & towels included?:** Yes, included in the rental price.
- **Pets welcome?:** Not allowed.
- **Other Ts and Cs:** Daily cleaning is included in the rental price.
- **Changeover day:** Flexible.
- **End of stay cleaning available?:** Yes. However, guests are required to leave the accommodation clean, tidy and in the same condition as on their arrival. Any extra cleaning, laundry, maintenance and/or garbage disposal required will be charged against the security deposit.
- **Smoking Allowed?:** Smoking & Vaping are not permitted.
- **Minimum stay:** 3 - 5 nights, depending on season. All other durations on request.
- **Heating costs included?:** Not available on this property.
- **Pool heating charge?:** Not available on this property.
- **Tax:** Tourist tax not applicable.
- **Internet access?:** Wi-Fi internet access included.
- **Pool towels included?:** No.