

Apartment Mathieu

Region: 3 Valleys Sleeps: 6

Overview

If you are looking for a chic central apartment in one of the best skiing resorts in the world, look no further than Apartment Mathieu, a modern, stylish three-bedroomed apartment located right in the heart of Courchevel.

Discerning travellers from around the globe head to this region drawn by the jaw-dropping scenery, the fabulous skiing slopes and the lively, sophisticated nightlife of Courchevel and with shops, restaurants and bars close by and hundreds of kilometres of snowy peaks waiting to be explored, you are at the centre of the action in Apartment Mathieu. Courchevel offers an amazing alpine adventure for families, groups and couples, with fantastic skiing for all abilities and a huge array of activities to enjoy no matter what season you choose to stay. The Après Ski scene is vibrant without being rowdy, and there are fabulous restaurants and bars to sample. It's worth enjoying a cocktail or two at one of the glamorous hotel's lounges to simply enjoy being amongst the beautiful people of Courchevel.

Smart and fresh with gorgeous mountain-top views, Apartment Mathieu offers everything you need for a relaxed, comfortable downtown after exhilarating snowy adventures. It's a home-from-home experience. Apartment Mathieu offers a bright, airy, open-style living and dining room dressed in tasteful contemporary-style furnishings, creating an attractive, comfortable space. Bathed in natural light and offering tantalizing mountainous views from the open-plan space's large windows, this is a lovely space to kick back and relax after snowy escapades.

For dining, the apartment has a compact, sleek kitchen area that is well-equipped and has everything you need to create tasty delights. The dining space offers cosy, snug-



for, relaxed meals with friends and family.

After exciting mountainside adventures and evenings filled with fun and laughter, retire to delightful, comfortable bedrooms where you can sink into inviting, cosy beds for a night of deep and restful sleep. The sleeping arrangements include two cosy double bedrooms with plenty of storage space, one with a chic en-suite bathroom, and one flexible bedroom with a Trundle bed that can be arranged into two single beds, perfect for the kids. There is a separate modern bathroom with a walk-in shower and a bonus independent WC.

If you want a chic, stylish retreat and a fabulous location in a superb alpine resort, Apartment Mathieu has all the ingredients you need for an unforgettable escape.

Facilities

Ski-In/Ski-Out • Ski Lift Nearby • Walk To Slopes • Self-Catered • Skiing • Ideal for Kids • Cots (Cribs) • Ideal for Teens • Modern • Wi-Fi/Internet • Lakes and Mountains • Chalet Apartment • Outstanding Landscapes • Coffee Machine • Outdoor Pursuit & Activities • Tourist Towns & Villages • TV • Microwave • Heating • Transfers Available • High Chair(s)

Interior & Grounds

The Apartment

Apartment Interior

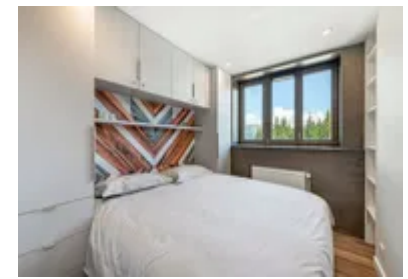
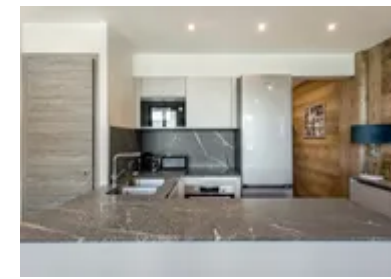
- Open-plan living/dining space
- Well equipped kitchen
- Bedroom 1 – double bedroom with en-suite Bathroom with shower
- Bedroom 2 - double bedroom
- Bedroom 3 - Truckle bed (2 singles) pull out bed
- 1 Separate Bathroom with shower
- Separate WC

Outside grounds

- Elevator
- Ski Locker

Additional Facilities

- TV
- Wi-Fi
- Reception in agency
- Nespresso coffee machine
- Kettle
- Microwave
- Nespresso coffee machine
- Oven
- Toaster
- Bathroom products
- Reception in agency
- Baby cot and high chair (on request)



Location & Local Information

Courchevel is the perfect resort to choose for skiers of all abilities. Part of the world-famous 3 Valleys, Courchevel offers a vast 660km of snowy-covered peaks to choose from and is one of the largest linked ski areas in the world!

Initially a summer tourist destination, Courchevel is made up of 5 ski villages, which are named for their altitudes in metres. Being a 'linked resort', it's easy to get around via lifts and shuttle buses.

Courchevel is a magnet for ski/snowboard addicts with a wide variety of runs to explore, and its reputation as the winter playground of the rich and famous attracts plenty of luxury boutiques, Michelin-acclaimed restaurants and top-notch hotels, especially at the top altitude resort (1850) where Apartment Mathieu is located so do keep your eyes peeled for celebs whilst enjoying the glittery après ski scene.

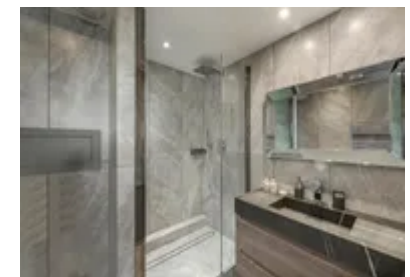
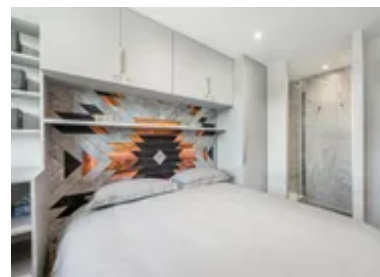
Courchevel is also very popular with families, off-pisters and non-skiers and offers a great selection of runs for all levels and lots of non-skiing adventures; it really is a great all round resort.

The ski area above the village has some lovely long green runs as well as some blues. Beginners should head to the nursery slopes at Altiport or take the Jardin Alpin gondola up to the Evolution Zone.

There is a selection of red runs offering great powder skiing accessed via the Creux Noirs and Marmottes chairlifts, and advanced skiers are very well catered for as the resort and the whole 3 Valleys offer a number of challenging runs to keep powder junkies happy.

The Grand Coulior and Coulior Tournier, accessed by the Saulire gondola, are both excellent and tough off-pisted and steep runs. It's well worth booking a guided lesson with an instructor to get the most out of the area.

As well as skiing and snowboarding, there is a huge array of activities to enjoy in this winter playground. Adrenalin



junkies can paraglide over the snowy peaks or take charge on a dog sledging adventure. You can try tobogganing, ice skating and snowshoeing, and for the ultimate dream, take to the skies and explore the winter wonderland from above in your own personal hot air balloon.

Courchevel is a fantastic resort to visit any time of year, and its stunning scenery and clear fresh air in the warmer months make for a rejuvenating escape. You can enjoy fabulous hiking and biking adventures, every kind of water sport, swim, boat and fish in fantastic clear, calm lakes and enjoy unforgettable Music Events on warm, balmy evenings surrounded by nature at its best.

Local Amenities

Nearest Airport	Geneva Airport (139km)
Nearest Airport 2	Lyon-Saint Exupéry Airport (182km)
Nearest Town/City	Courchevel (4.4km)
Nearest Restaurant	The Burger Factory (140m)
Nearest Bar/Pub	Au planté de bâton (350m)
Nearest Piste	Tovets (10m)
Nearest Supermarket	Carrefour Montagne (150m)
Nearest Ski Hire	Skiset Ski Service Snow Shop (150m)
Nearest Ski Lift	Front de Neige / Snow Front (250m)

What we love

- Apartment Mathieu is in a great central location – skiing or shopping you decide, both are a short walk away.
- Clean bright and contemporary Apartment Mathieu offers, a stylish retreat after exhilarating excursions and is a relaxing space to hang out with friends and family.
- Courchevel is the ultimate all round skiing resort and is ideal for groups and families with so much to do and see.

What you should know...

- A highchair and Cot can be arranged upon request.
- Courchevel is an ideal destination any time of year.
- You are only 250 metres from the nearest ski school and nearest ski school.

Terms & Conditions

- **Security deposit:** Secure link sent to the client's email to fill in the details of the client's bank card online 2 weeks before the arrival for the amount of €2000. Funds won't be taken or blocked on the credit card in this case.
- **Arrival time:** Check-in 5.00 PM.
- **Departure time:** Check-out 10.00 AM.
- **Energy costs included?:** Yes, included in the rental price.
- **Linen & towels included?:** Yes, included in the rental price.
- **Pets welcome?:** Not allowed.
- **Changeover day:** Saturday.
- **End of stay cleaning available?:** Yes, except the kitchen and scheduled cleaning on request (additional charge). However, guests are required to leave the accommodation clean, tidy and in the same condition as on their arrival. Any extra cleaning, laundry, maintenance and/or garbage disposal required will be charged against the security deposit.
- **Smoking Allowed?:** Smoking & Vaping are not permitted.
- **Minimum stay:** 7 nights.
- **Heating costs included?:** Yes, included in the rental price.
- **Tax:** French Visitors Tax payable alongside balance (typically costs €1-€5 per adult per night- please enquire if exact amount is required).
- **Internet access?:** Wi-Fi internet access included.