

Logan Apartment

Region: Edinburgh Sleeps: 4

Overview

Logan Apartment offers a haven of elegance and contemporary style nestled in the vibrant West End of Edinburgh. This stunning two-bedroom apartment with a private patio has recently been refurbished, expertly decorated to offer the epitome of sophistication.

As you step inside, you'll be greeted with a sense of comfort and elegance. The furnishings are carefully selected to provide the ultimate relaxation, complemented by contemporary artwork and stylish touches throughout the property. Flooded with natural light, this apartment creates a warm and inviting atmosphere, making it the perfect home away from home.

The stylish lounge beckons with ample comfortable seating, widescreen TV, and a Sonos system, promising entertainment and relaxation. The fully equipped kitchen dining room is a culinary haven, leading out to the private courtyard – a rare and valuable feature for a city centre flat.

The two bedrooms are inviting sanctuaries for rest and rejuvenation. The front bedroom offers a cosy double bed, ensuring a good night's sleep. The larger king bedroom at the rear boasts an ensuite shower room for added convenience. Additionally, a family bathroom with a shower-over bath awaits in the hall, inviting you to unwind with a soothing soak after a day of exploring the city.

Outside, this stylish lower ground-floor apartment resides in a traditional Georgian building on Stafford Street. The secure patio to the rear of the property provides a tranquil escape. At the same time, the famous Prince's Street Gardens are just a five-minute walk away, offering the perfect place for leisurely strolls and outdoor enjoyment.



Despite its quiet surroundings, this apartment is centrally located, making it an ideal Edinburgh pied-à-terre. The Scottish National Galleries and National Museum of Scotland are within walking distance, offering cultural enrichment. Stafford Street is dotted with boutique shops, and numerous restaurants and cafes are within easy reach. Indulge in locally sourced Scottish cuisine, sample locally brewed beer at nearby bars, and savour breakfasts, coffees, and freshly made pastries at charming cafes.

Logan Apartment is the perfect base for a fully immersive and relaxing experience of Edinburgh. This elegantly decorated and thoughtfully furnished apartment provides an excellent base for exploring the city's wonders while offering a serene and homely ambience.

Facilities

Wi-Fi/Internet • Romantic • Walk to Village • Wow Factor • City Homes & Apartments • Zoo • Kid-friendly museum • Kid-friendly excursions • No car required • Ideal for Babies & Toddlers • Ideal for Kids • Ideal for Teens • <1hr to Airport • Washing Machine • Dishwasher • Microwave • Coffee Machine • Hairdryer • Tourist Towns & Villages • Historical Sites

Interior & Grounds

The Apartment

Stunning two-bedroom apartment with a private patio that has recently been refurbished in the vibrant West End of Edinburgh.

Interior:

- Stylish lounge
- Fully equipped kitchen
- Dining room
- Master bedroom: King-size bed with ensuite shower room
- Bedroom 2: Double bed
- Family Bathroom

Exterior

- Private courtyard

Additional Facilities

- Wi-Fi
- Dishwasher
- Washing machine
- TV
- Cot
- Hairdryer



Location & Local Information

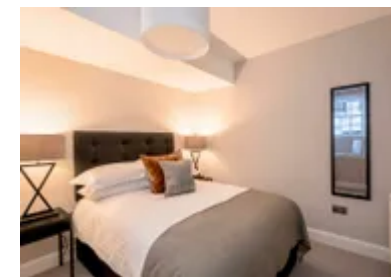
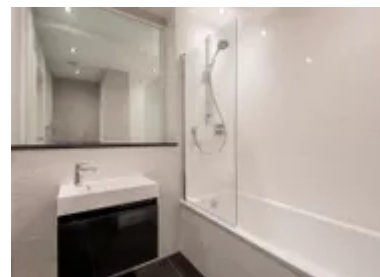
Nestled in the vibrant West End of Edinburgh, the Logan Apartment boasts a prime location that effortlessly combines the excitement of city living with the tranquillity of a serene neighbourhood. Situated on Stafford Street, a picturesque and historically significant avenue, this luxury lower ground-floor apartment resides within a traditional Georgian building, adding a touch of old-world charm to its modern appeal.

The West End is renowned for its sophisticated ambience and artistic flair, making it a favourite among locals and visitors. Its cobbled streets are lined with elegant townhouses, boutique shops, and quaint cafes, exuding a sense of timeless elegance. The area's rich history is evident in the beautiful architecture surrounding the Logan Apartment, showcasing the grandeur of Georgian design.

Despite its central location, the Logan Apartment offers a surprisingly peaceful retreat. The secure patio to the rear of the property provides an inviting sanctuary where guests can unwind and enjoy moments of tranquillity amidst the bustling city. Just a short stroll away, the famous Prince's Street Gardens beckon with their lush greenery and captivating views of Edinburgh Castle, offering a picturesque escape right at the doorstep.

The West End's cultural offerings are abundant, with the renowned Scottish National Galleries and National Museum of Scotland nearby. Art enthusiasts and history buffs will immerse themselves in a world of artistic masterpieces and fascinating exhibitions, enriching their understanding of Scotland's heritage.

For foodies and connoisseurs of fine dining, Stafford Street and its surroundings present a delightful array of culinary experiences. From traditional Scottish delicacies to international cuisines, the neighbourhood's restaurants cater to diverse tastes, promising a gastronomic adventure.



Beyond its cultural and culinary offerings, the West End provides a gateway to exploring Edinburgh's many attractions. The bustling city centre's iconic landmarks, such as the Royal Mile and Edinburgh Castle, are within easy reach. Visitors can meander through charming streets, visit historic sites, and enjoy the vibrant atmosphere that defines Scotland's capital.

Logan Apartment's location in Edinburgh's West End is a true gem. It offers a harmonious blend of sophistication and tranquillity, allowing guests to immerse themselves in the city's cultural wonders and artistic flair while enjoying the comforts of a serene and inviting neighbourhood. Whether you seek exploration, relaxation, or a bit of both, this location sets the stage for an unforgettable Edinburgh experience.

Local Amenities

Nearest Airport	Edinburgh Airport (11 km)
Nearest Train Station	Haymarket Station (700 m)
Nearest Supermarket	Tesco Express (350 m)
Nearest Restaurant	The Green Room Wine Bar (85m)
Nearest Bar/Pub	Teuchters (85m)

What we love

- Logan Apartment exudes contemporary style and sophistication with its expertly decorated interiors and modern flair.
- A rare and valuable feature for a city centre flat, the apartment boasts a secure patio, providing a tranquil outdoor space to relax and unwind.
- Situated in Edinburgh's vibrant West End, the property offers easy access to cultural attractions, boutique shops, and charming cafes, making it an ideal base for exploring the city.

What you should know...

- There are steps down to this property. As a lower ground floor apartment, once you have walked down these steps, the entire property is situated on one level.
- This property is not suitable for stags, hens or parties.
- One member of the booking party must be over 25 years old.

Terms & Conditions

- **Security deposit:** £500 paid via Superhog (external website) to the owner before arrival and refunded two weeks after departure, subject to full inspection.
- **Arrival time:** 15:30 - 19:00
- **Departure time:** 10:30
- **Energy costs included?:** Yes, included in the rental price.
- **Linen & towels included?:** Yes, included in the rental price.
- **Pets welcome?:** Not allowed.
- **Other Ts and Cs:** Please note that the lead guest is minimum 25 years.
- **End of stay cleaning available?:** Yes, standard changeover clean included. Guests are required to leave the accommodation clean, tidy and in the same condition as on their arrival. Any extra cleaning, laundry, maintenance and/or rubbish disposal required will be charged against the security deposit.
- **Smoking Allowed?:** Smoking & Vaping are not permitted.
- **Heating costs included?:** Yes, included in the rental price.
- **Internet access?:** Wi-Fi internet access included in the rental price.