

Regency Suite Lisbon II

Region: Portugal Sleeps: 5

Overview

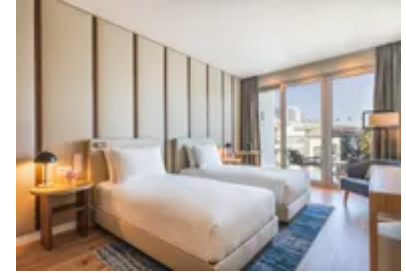
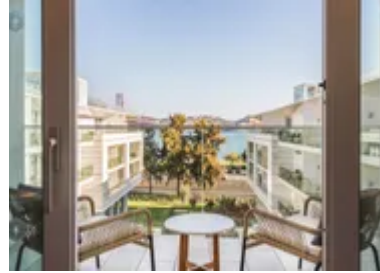
Immerse yourself in the perfect blend of elegance and convenience at Regency Suite Lisbon II. This sleek and modern suite effortlessly combines the comforts of a private apartment with the opulence of an upmarket hotel. Located in vibrant Lisbon, this stunning accommodation grants easy access to the city's top attractions.

You will feel at home when you arrive and step into this fully equipped suite. The spacious, bright living space, adorned with contemporary flair, ensures a comfortable and enjoyable stay. Thoughtfully designed, the suite features a separate living room with a dining area, offering a dedicated space for entertaining or enjoying meals. A fully equipped kitchenette is also provided, allowing you to prepare your own meals and snacks during your stay. The private balcony offers the perfect relaxing spot, providing a serene setting to unwind and take in the surroundings.

A good night's sleep comes easily in the two modern bedrooms, one furnished with a queen-size bed and the other with two twin beds. Whether you're travelling with friends, family, or as a couple, the suite accommodates up to five adults or four adults and two children, ensuring ample space for everyone.

When you tear yourself away from the apartment's indulgent offerings, Lisbon beckons with many attractions and activities. The city is renowned for its vibrant nightlife, featuring world-class bars and clubs frequented by locals and tourists. Lisbon's rich history and culture are embodied in its captivating monuments, many of which are located near the Belém district. Food enthusiasts will find paradise in Lisbon, boasting the acclaimed Time-Out market and Michelin-starred restaurants where they can savour delectable dishes and commemorate special occasions.

Offering the perfect fusion of elegance and convenience, Regency Suite Lisbon II is a brilliant base for exploring all the vibrancy this city has to offer!



Facilities

Spa/Massage • Surfing • Washing Machine • City Homes & Apartments • Coffee Machine • Hairdryer • Boat Trips • Tennis Nearby • Historical Sites • Romantic • Wi-Fi/Internet • Air-Con • TV • Cots (Cribs) • Wow Factor • Gym/Fitness Room • Lift • Walk to Village • Kid-friendly museum • Kid-friendly excursions • Playground nearby • No car required • Ideal for Babies & Toddlers • Ideal for Kids • Ideal for Teens • Walk to Restaurant • <1hr to Airport • Tumble Dryer • Dishwasher • Safety Deposit Box • Smart TV • Satellite TV • Sauna/Steam • Heating • Tourist Towns & Villages

Interior & Grounds

The Apartment

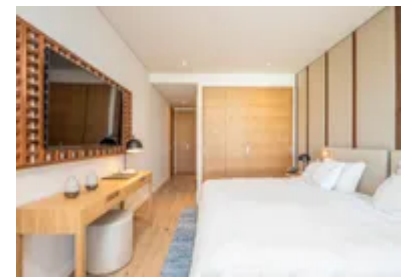
Sleek and sophisticated suite in Lisbon's vibrant city centre, with two bedrooms hosting up to five adults, or four adults and two children.

Interior

- Open-plan living space
- Kitchenette
- Dining area
- Master bedroom: Queen-size bed
- Bedroom 2: Twin beds
- Bathroom

Additional Facilities

- Wi-Fi
- HD TV
- Individually controlled heat and air conditioning
- Iron/ironing board
- Washing machine/dryer
- Dishwasher
- Crib upon request
- Lavazza coffee machine
- Bathrobe and slippers
- Hair dryer
- Electronic safe



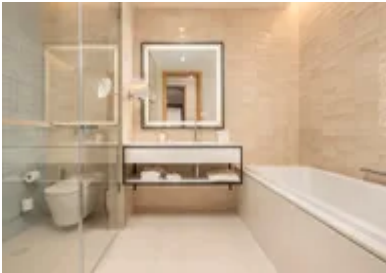
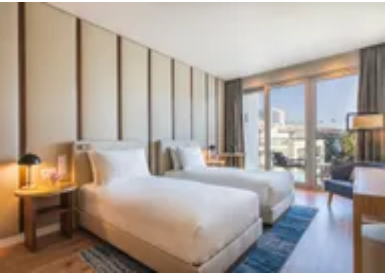
Location & Local Information

Set in a lively yet peaceful corner of Lisbon, Regency Suite Lisbon II offers a well-connected base just moments from local cafés, independent shops, and vibrant restaurants. From its elevated position, the suite offers glimpses of the iconic bridge, grounding you in the city's distinctive character. Excellent transport links - including nearby metro, tram, and bus stops - make it easy to explore Lisbon's varied neighbourhoods, from the historic quarters to the modern waterfront.

Spend your days discovering Lisbon's layered culture and cuisine: explore the architectural treasures near Belém, sample fresh local dishes at the Time Out Market, or treat yourself to a Michelin-starred dinner. For a change of pace, Lisbon's renowned Atlantic coastline is within easy reach, offering surf schools, laid-back beach bars, and sweeping sands perfect for unwinding. Whether you're here for food, history, nightlife or nature, this address puts it all within easy reach.

Local Amenities

Nearest Airport	Lisbon International Airport (12 km)
Nearest Town/City	Lisbon
Nearest Train Station	Belem (1 km)
Nearest Ferry Port	Belem (1 km)
Nearest Supermarket	Pingo Doce Boa-Hora (850 m)
Nearest Restaurant	Visevera (0 km)
Nearest Bar/Pub	Icon Rooftop Bar (0 km)
Sightseeing	Jerónimos Monastery (2 km)



Nearest Tennis	BoaHora Ténis & Padel (1 km)
----------------	---------------------------------

What we love

- Whether you're enjoying a morning coffee on the private balcony or relaxing in the living room, you'll be treated to captivating vistas that showcase the charm of Lisbon
- The design creates a chic and inviting ambience with a contemporary flair and sleek furnishings
- The fully equipped kitchenette provides you with the convenience and flexibility to prepare your own meals and snacks during your stay

What you should know...

- The suite boasts a convenient washing machine and dryer for longer stays.
- Several suites in the same building are helpful for larger groups that want to stay in the same place.
- Pets are not allowed.
- Please note that pricing for Regency Suite Lisbon II is on request - please enquire for more details.

Terms & Conditions

- **Arrival time:** 3:00 p.m.
- **Departure time:** 12:00 p.m.
- **Energy costs included?:** Yes, included in the rental price.
- **Linen & towels included?:** Yes, included in the rental price.
- **Pets welcome?:** Not allowed.
- **Other Ts and Cs:** Please note that pricing for Regency Suite Lisbon II is on request - please enquire for more details.
- **End of stay cleaning available?:** Yes. However, guests are required to leave the accommodation clean, tidy and in the same condition as on their arrival. Any extra cleaning, laundry, maintenance and/or garbage disposal required will be charged against the security deposit.
- **Smoking Allowed?:** Smoking & Vaping are not permitted.
- **Minimum stay:** 1 night.
- **Heating costs included?:** Yes, included in the rental price.
- **Tax:** €2 per adult per day, for up to €14 per adult to be paid on arrival. Children 12 yrs and below are exempt.
- **Internet access?:** Wi-Fi internet access included.