

Residenza Panvino

Region: Umbria **Sleeps:** 2

Overview

Residenza Panvino is one of three luxurious apartments within the historic Casa Bolini, located in the heart of Umbria's picturesque countryside. Ideally situated between Rome and Florence, this charming palazzo offers a peaceful retreat surrounded by greenery, perfect for relaxation.

Just a short stroll from Orvieto's vibrant city centre, Casa Bolini is lovingly maintained by an esteemed aristocratic family, ensuring an authentic and distinguished experience. The palazzo, with its 3,000-year history, blends Renaissance, Medieval, and ancient Etruscan influences, providing a seamless fusion of tradition and luxury. Residenza Panvino is a one-bedroom apartment with a spacious open-plan living room and a fully equipped kitchen with a dining area. It exudes opulence with silk and cotton furnishings, private living and dining areas, and a warm, grand atmosphere.

Guests can enjoy gardens and terraces with panoramic views of rolling hills and forests. Casa Bolini features a sauna, plunge pool, fitness room, and rooftop terrace, offering a full range of relaxation and wellness amenities.

Orvieto's historic heart, with its churches, museums, and restaurants, is just minutes away. Nature lovers can explore nearby Lago di Bolsena, Lago di Corbara, and Lago di Bracciano or enjoy a trip to the Tuscan coast. Residenza Panvino offers easy access to Rome, Florence, and Grosseto, making it an ideal base for both relaxation and exploration.



Facilities

Washing Machine • City Homes & Apartments • Coffee Machine • Wellness • Wi-Fi/Internet • Air-Con • Hairdryer • Historical Sites • Walking/Hiking Paths • Romantic • Maid Service Included • Laptop Friendly Workspace • Wow Factor • Lift • Walk to Village • Gym/Fitness Room • Heritage Collection • Cooking Classes Available • Wine-Tasting Available • Transfers Available • On-Site Concierge • Bathroom Toiletries • Hot Tub • Walk to Restaurant • Tumble Dryer • Safety Deposit Box • All Bedrooms En-Suite • Wheelchair Access • Sauna/Steam • Wine Cellar • Heating • Tourist Towns & Villages

Interior & Grounds

Apartment Interior (73m2)

- Open-plan living room with a sofa
- Kitchen with a dining peninsula with a dining table and chairs, breakfast table with stools and fridge, induction range, large refrigerator, and an American and Italian espresso machine
- Double bedroom with king-size bed, armadio closet and en-suite bathroom with sink, shower and WC

Ground Floor

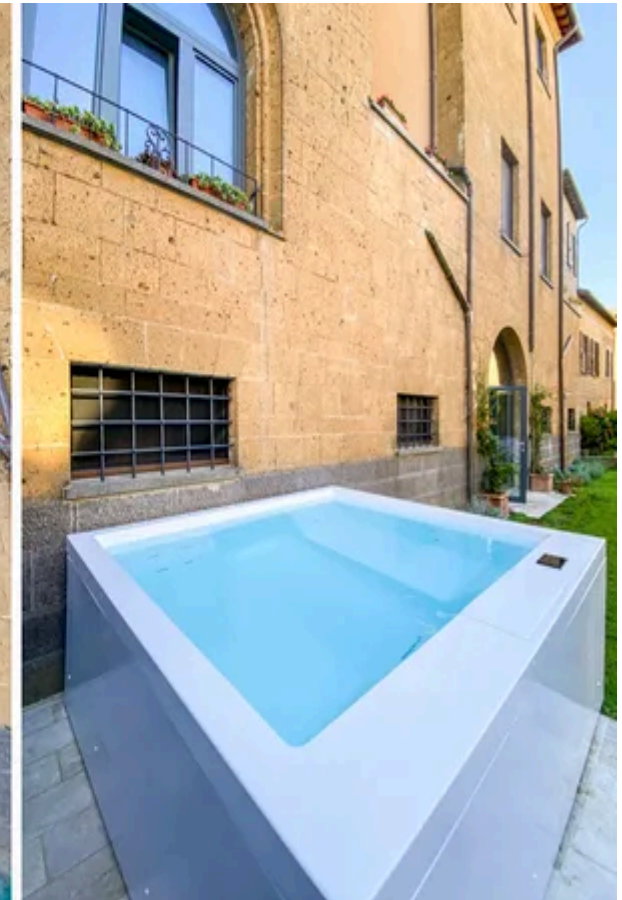
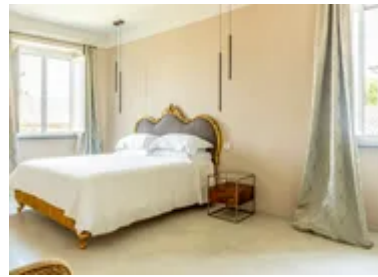
- Shared reception, gym, sauna, jacuzzi and gardens

Outside Grounds

- Juliet balcony
- Communal roof terrace
- Garden
- Small kitchen area with barbeque (on request and based on availability)
- Parking in a nearby public space

Additional Facilities

- Wi-Fi
- TV (on request)
- Sound system
- Lift/Elevator
- Plunge pool with hot or cool water temperature
- Step-free facilities
- Emergency kit



Location & Local Information

Residenza Panvino offers a car-free experience in the heart of Orvieto, surrounded by medieval towns, rolling hills, and the charm of Umbria, Italy's "green heart." The owners can arrange personalized tours to enhance your stay, allowing you to fully immerse yourself in this serene setting.

Located in the centre of Orvieto, Residenza Panvino is steps away from historic landmarks like the Torre del Moro, which offers panoramic views, and the stunning Palazzo Del Capitano Del Popolo. Local restaurants, grocery shops, and a supermarket are within easy reach.

For nature lovers, the nearby countryside offers numerous walking and hiking trails. Explore Parco Fluviale del Tevere, a riverside park with vineyards, lakes, and archaeological sites, or visit Lago di Corbara for a swim after a hike to La Roccaccia Castle.

Rome is just 1.5 hours away by car, offering iconic landmarks like the Colosseum, Pantheon, and Vatican City. Florence, with its UNESCO-listed Renaissance Centre, is a 2-hour drive, providing art, culture, and history at every turn.

Residenza Panvino combines relaxation, cultural exploration, and adventure, making it the perfect base for discovering Umbria, Tuscany, and beyond.

Local Amenities

Nearest Airport	San Francesco d'Assisi Airport (78 km)
Nearest Train Station	Orvieto Train Station (4 km)
Nearest Town	Orvieto (450 m)
Sightseeing	Palazzo Del Capitano Del Popolo (550 m)
Nearest Restaurant	Orvieto (450 m)
Nearest Bar/Pub	Orvieto (450 m)
Nearest Tennis	Open Sport Village Orvieto (7 km)
Nearest Golf	Antognolla or Golf Club Perugia (80 - 100 km)



What we love

- The Palazzo boasts a rich history spanning over 3000 years, showcasing visible Renaissance and Medieval architectural elements built upon Etruscan foundations.
- The property offers a range of exclusive amenities, including a sauna, jacuzzi, fitness room, and a rooftop terrace.
- The residence is nestled in the clifftop city of Orvieto, but still strategically situated just a few moments away from the vibrant countryside, ideal for visiting truffle forests, vineyards, and olive groves.

What you should know...

- A car is not necessarily needed, all you need can be found in the surrounding Orvieto. The owners will also be able to organise for you visits, pick-ups and tours.
- The owners occupy a private apartment on the first floor and are available on-site to provide concierge services and assistance as part of the staff. Although, guests can enjoy complete privacy by having the entire house at their disposal whenever required.
- Please note that guests might be sharing some facilities such as the rooftop terrace and gym with other guests.
- The owner has informed us that this apartment has zero steps and may be configured for persons with mobility issues upon request. However, please contact us before booking so we can discuss individual accessibility requirements with the owner to ensure that this property is suited to your specific needs.

Terms & Conditions

- **Security deposit:** €500 charged to client's credit card as a pre-authorisation at least 2 weeks prior to arrival and refunded two weeks after departure, subject to full inspection.
- **Arrival time:** 15:00 - 20:30
- **Departure time:** 11:00
- **Energy costs included?:** Yes.
- **Linen & towels included?:** Yes.
- **Pets welcome?:** Not allowed.
- **Changeover day:** Flexible.
- **End of stay cleaning available?:** Yes. However, guests are required to leave the accommodation clean, tidy and in the same condition as on their arrival. Any extra cleaning, laundry, maintenance and/or rubbish disposal required will be charged against the security deposit.
- **Smoking Allowed?:** Outside only.
- **Minimum stay:** 2 nights. All other durations on request.
- **Heating costs included?:** Yes.
- **Tax:** Italian Visitors Tax included (typically costs €1-€10 per adult per night - please enquire if exact amount is required).
- **Property Licence Number:** CIN: IT055023B404032851