

Chalet Lola

Region: 3 Valleys Sleeps: 10

Overview

Situated within the enchanting embrace of the alpine paradise, Chalet Lola stands as a captivating retreat in the heart of Saint-Marcel village, a stone's throw away from the charming Saint-Martin de Belleville. This delightful chalet, exuding an irresistible charm, offers an exceptional getaway that seamlessly blends tradition with contemporary comfort.

Spanning gracefully across three levels, the chalet boasts a prestigious 5 Flocon rating, a testament to its luxurious allure. Its architectural design pays homage to the timeless alpine style, where the warmth of wood harmoniously intermingles with modern furnishings. The result is an inviting ambience that wraps guests in cosy sophistication.

The chalet's layout invites the breathtaking mountain panorama indoors, flooding the space with natural light through its multitude of well-placed openings. As the sun's golden rays dance upon the peaks, the interior becomes a serene haven to bask in. A central gathering point, the lounge area beckons with the allure of a crackling fireplace—a sanctuary to unwind and relive the day's exhilarating adventures on the ski slopes.

With a thoughtfulness that defines every detail, Chalet Lola comfortably accommodates eight adults and two children within its four splendid double bedrooms. Each room is an oasis of tranquillity, promising restful nights and refreshing mornings.

The chalet's convenience extends to practicalities, offering a pair of reserved parking spaces for those arriving by vehicle. Additionally, its proximity to the nearby bus stop ensures seamless access to the ski lifts, making



the journey to the slopes as effortless as the glide of a skier on fresh powder.

Facilities

Skiing • Bus/Shuttle To Slopes • Ski Chalet • Self-Catered • Ideal for Kids • Special Offer • Cots (Cribs) • Has Discount • Great Value • Ideal for Teens • Modern • Parking Space • Wi-Fi/Internet • Lakes and Mountains • Washing Machine • Outstanding Landscapes • Coffee Machine • Outdoor Pursuit & Activities • Tourist Towns & Villages • TV • DVD • Dishwasher • Microwave • Working Fireplace/Woodburner • Heating • Transfers Available • High Chair(s)

Interior & Grounds

The Chalet

Ground floor

- Bedroom with double bed, ensuite bathroom with bathtub, toilet and basin
- Bedroom with double bed (180 x 200 - can be converted into two singles), bunk bed (90 x 200), ensuite bathroom with shower and basin
- WC

First floor

- Bedroom with double bed (180 x 200 - can be converted into two singles), ensuite bathroom with bathtub, toilet and basin
- Bedroom with double bed (180 x 200 - can be converted into two singles), ensuite bathroom with shower and basin
- WC

Second floor

- Living area with seating, TV and fireplace
- Dining space with table and chairs
- Fitted kitchen with induction hobs, fridge, electric juicer, bean to cup coffee machine

Outside Grounds

- Balcony
- Parking space

Additional facilities

- Wi-Fi
- DVD/Blu-Ray player
- Baby cot and highchair (on request)
- Wood fireplace
- Bean to cup coffee machine
- Dishwasher
- Electric juice squeezer
- Fridge
- Induction hobs
- Iron
- Ironing board
- Kettle



- Microwave
- Oven
- Senseo coffee machine
- Toaster
- Washing machine
- Bathroom products (Winter only)
- Reception at the property
- Household and bath linen

Location & Local Information

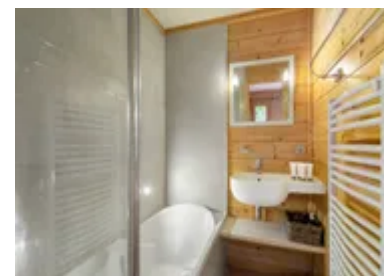
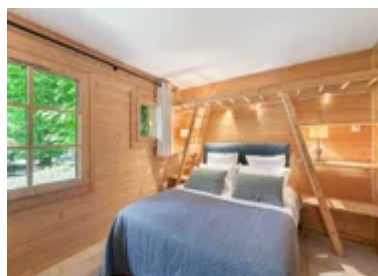
Chalet Lola is located within the breathtaking heights of Saint-Martin-de-Belleville, at an elevation ranging from 1400m to its majestic summit at 2400m; the chalet enjoys a prime location where snowfall is practically assured throughout the season. This charming village is not only a haven for winter enthusiasts but a gateway to an alpine wonderland that thrives in all its glory.

Saint-Martin de Belleville shares its prestigious ski domain, Les Trois Vallées, with the renowned Courchevel, forming the world's largest skiing resort. With over 600 km of meticulously maintained slopes, served by more than 160 lifts, and an impressive 85% of the ski area situated above 1800m altitude, every skier's dream is brought to life. Whether you're a beginner seeking gentle slopes or an expert craving challenging descents, the resort caters to all levels with slopes that promise an exhilarating experience.

The convenience of Saint-Martin de Belleville extends to quick access to nearby regions, including Les Menuires and the glacier-covered wonderland of Val Thorens. Yet, what sets this village apart is its unwavering commitment to preserving its authentic Savoyard essence. Amidst narrow streets and charming chalets, the village exudes a warm, welcoming atmosphere that blends history seamlessly with modernity. Monuments of the past stand humbly alongside comfortable contemporary chalets, offering a unique blend of experiences that define discreet luxury.

A stay in Saint-Martin de Belleville is an invitation to immerse oneself in a world where heritage and modernity coexist. Every corner reveals the charm of yesteryears, and the richness of Savoyard culture is celebrated through terroir dishes and museums. While embracing the rustic authenticity of the village, guests are treated to top-tier services and accommodations that epitomise opulence.

Local Amenities



Nearest Airport	Geneva Airport (141km)
Nearest Airport 2	Lyon-Saint Exupéry Airport (184km)
Nearest Town/City	Saint-Martin-de-Belleville (1.8km)
Nearest Restaurant	Pizza del capo (300m)
Nearest Bar/Pub	Pourquoi Pas (1.8km)
Nearest Piste	Biollay (1400m)
Nearest Supermarket	Huit à huit (1.8km)
Nearest Ski Hire	Skiset Togosports (1.7km)
Nearest Ski Lift	TELECABINE SAINT MARTIN 1 (1400m)

What we love

- We loved the family bedrooms complete with bunk beds, which made sleeping arrangements with the younger kids convenient.
- The mountain views are incredible - be sure to pack your camera.
- The modern and stylish interior of Chalet Lola was homely and comfortable.

What you should know...

- A baby cot and highchair are available on request for the youngest guests.
- The chalet is complete with a ski locker to keep your living spaces dry and clutter-free.
- Three of the double beds can be converted into two singles.

Terms & Conditions

- **Security deposit:** Secure link sent to the client's email to fill in the details of the client's bank card online 2 weeks before the arrival for the amount of €4000. Funds won't be taken or blocked on the credit card in this case.
- **Arrival time:** Check-in 5.00 PM.
- **Departure time:** Check-out 10.00 AM.
- **Energy costs included?:** Yes, included in the rental price.
- **Linen & towels included?:** Yes, included in the rental price.
- **Pets welcome?:** Not allowed.
- **Changeover day:** Saturday.
- **End of stay cleaning:** Standard changeover clean included in the price. Guests are required to leave the accommodation clean, tidy and in the same condition as on their arrival. Any extra cleaning, laundry, maintenance and/or rubbish disposal required will be charged against the security deposit.
- **Other Cleaning:** Scheduled cleaning on request (additional charge).
- **Smoking Allowed?:** Smoking & Vaping are not permitted.
- **Minimum stay:** 7 nights.
- **Heating costs included?:** Yes, included in the rental price.
- **Tax:** French Visitors Tax payable alongside balance (typically costs €1-€5 per adult per night- please enquire if exact amount is required).
- **Internet access?:** Wi-Fi internet access included.