

Apartment Ela

Region: 3 Valleys Sleeps: 6

Overview

Located in the prestigious Belvédère area of Méribel, Apartment Ela offers a stylish and comfortable retreat just moments from the slopes. Blending classic Alpine charm with contemporary design, this elegant three-bedroom apartment provides the perfect base for families or friends seeking a refined mountain getaway in the heart of the Three Valleys.

The interiors are warm and welcoming, featuring soft tones, natural wood finishes, and large windows that fill the living space with light. The open-plan lounge and dining area form the heart of the apartment, centred around a modern, fully equipped kitchen — ideal for cooking relaxed dinners after a day on the pistes. Step out onto the furnished balcony to enjoy the crisp mountain air and admire the serene surroundings of Belvédère.

Each of the three double bedrooms is beautifully appointed, two offering private en-suite bathrooms while the third benefits from a separate shower room. Thoughtful touches — such as a ski locker with boot heater, lift access, and private parking — ensure convenience throughout your stay.

Perfectly positioned just 150 metres from the Rhodos gondola, Apartment Ela provides easy access to Méribel's extensive ski network while maintaining a peaceful, exclusive feel. The village centre, with its boutiques, bars, and restaurants, is a short drive or bus ride away, making it simple to enjoy the area's lively après-ski scene.

Combining contemporary comfort, scenic surroundings, and excellent proximity to the slopes, Apartment Ela promises a seamless blend of relaxation and Alpine adventure.



Facilities

Ski Lift Nearby • Ski School Nearby • Boot Heaters • Walk To Slopes • Self-Catered • Skiing • Walk to Village • Ideal for Kids • Chef/Cook Available • Ideal for Teens • Cots (Cribs) • Maid Service Available • Modern • Walk to Restaurant • Parking Space • Lakes and Mountains • Chalet Apartment • Washing Machine • Coffee Machine • Hairdryer • Tumble Dryer • Dishwasher • Microwave • Smart TV • Catering Available • Breakfast Available • Ski Locker • Bathroom Toiletries • Ideal for Babies & Toddlers • High Chair(s)

Interior & Grounds

The Apartment

Apartment Interior

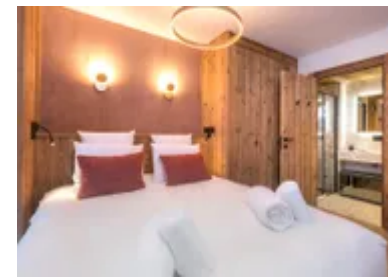
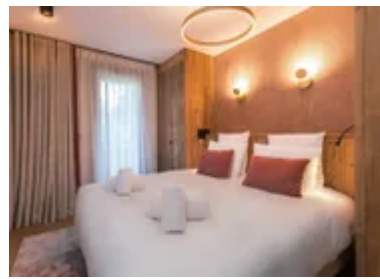
- Open-plan living/dining space
- Well equipped kitchen
- Bedroom 1 – double bedroom with wardrobe, TV and en-suite Bathroom with shower
- Bedroom 2 - double bedroom with Balcony
- Bedroom 3 - double bedroom with Balcony wardrobe, TV and en-suite Bathroom with shower
- 1 Separate Bathroom with Shower
- Separate WC

Outside Grounds

- Parking space
- Ski Locker
- Boots heater
- Furnished Balcony
- Elevator

Additional facilities

- TV
- Reception in agency
- Dishwasher
- Dryer
- Induction hob
- Fridge
- Microwave
- Kettle



Location & Local Information

Apartment Ela enjoys an enviable position in Méribel's exclusive Belvédère district, one of the resort's most desirable areas. Tucked among snow-dusted pines and traditional chalets, it offers a peaceful setting with easy access to both the slopes and the village.

The Rhodos gondola is just 150 metres away, providing effortless access to Méribel's world-renowned ski area and the wider Three Valleys, the largest interconnected ski domain in the world. From gentle runs to challenging descents, there's terrain for every level, along with excellent ski schools and equipment hire nearby.

Beyond skiing, Méribel's alpine charm extends throughout the year. The resort transforms in summer into a haven for walkers and cyclists, with mountain trails winding through flower-filled meadows and panoramic viewpoints.

After a day on the slopes or exploring the mountains, guests can unwind in Méribel's lively centre, located just a short drive or free shuttle ride away. Here you'll find boutique shops, cosy cafés, and inviting restaurants serving local Savoyard specialities, the perfect way to round off a day in the Alps.

Local Amenities

Nearest Airport	Geneva (137 km)
Nearest Bar/Pub	Rond Point (700 m)
Nearest Piste	Rhodos (200 m)
Nearest Restaurant	Lilie (700 m)
Nearest Ski Hire	Chamois Sports (2.2 km)
Nearest Ski Lift	Rhodos 2 (150 m)



Nearest Supermarket	Sherpa (1.2 km)
Nearest Village	Méribel Centre (3.6 km)

What we love

- Apartment Ela offers stunning mountain views from its furnished balcony, making it the perfect spot to unwind and take in the scenery.
- Situated close to ski slopes and the Rhodos gondola with fabulous scenic views over the town Apartment Ela offers a wonderful base to enjoy the best of Meribel.
- This apartment seamlessly blends traditional alpine charm with modern amenities, creating a warm and inviting atmosphere for families and groups.

What you should know...

- A car or use of the resort shuttle is recommended for exploring Méribel's wider dining and shopping scene
- The property is on an upper floor with lift access, though internal steps may make it less suitable for guests with limited mobility
- Families with young children should note the balcony access from two bedrooms

Terms & Conditions

- **Security deposit:** Secure link sent to the client's email to fill in the details of the client's bank card online 2 weeks before the arrival for the amount of €3000. Funds won't be taken or blocked on the credit card in this case.
- **Arrival time:** Check-in 5:00 PM
- **Departure time:** Check-out 10:00 AM
- **Energy costs included?:** Yes, included in the rental price
- **Linen & towels included?:** Yes, included in the rental price
- **Pets welcome?:** Not allowed
- **Changeover day:** Saturday
- **End of stay cleaning available?:** Yes, included in the rental price. However, guests are required to leave the accommodation clean, tidy and in the same condition as on their arrival. Any extra cleaning, laundry, maintenance and/or rubbish disposal required will be charged against the security deposit
- **Smoking Allowed?:** Smoking & Vaping are not permitted
- **Minimum stay:** 7 nights. All other durations on request
- **Heating costs included?:** Yes, included in the rental price
- **Tax:** French Visitors Tax payable alongside balance (typically costs €1-€5 per adult per night- please enquire if exact amount is required).
- **Internet access?:** Available at an additional cost