

Villa Poppi

Region: Koh Samui Sleeps: 8

Overview

Villa Poppi is a striking contemporary retreat set on a tropical hillside near the prestigious Plai Laem area of Koh Samui. Designed by renowned architect Gary Fell, this three-bedroom villa is one of four beautifully crafted residences that blend sleek glass architecture, Italian furnishings and refined interior design with breathtaking sea views over the Gulf of Thailand. Surrounded by lush landscaped gardens and enjoying direct access to a private beach, Villa Poppi offers a calm, luxurious atmosphere that feels both exclusive and effortlessly relaxed. Its elevated position delivers spectacular sunset views, while nearby attractions such as the Big Buddha, Choeng Mon Beach, Fisherman's Village and Chaweng ensure the perfect balance of tranquillity and island life.

Inside, the villa's open-plan living spaces flow seamlessly onto expansive terraces and a stunning 9-metre swimming pool with a shallow end and Jacuzzi bench. A sleek, fully equipped kitchen invites relaxed dining or the option of a private chef, while three elegant ensuite bedrooms provide exceptional comfort, led by a generous master suite with its own sea-facing terrace and lounge area. Guests enjoy a full suite of hotel-style services, including daily breakfast delivery, housekeeping, turn-down service, a complimentary in-villa massage, access to a shared gym and the support of a dedicated Experience Manager. With sea kayaks, paddleboards, alfresco dining spaces and a private path leading to the beach, Villa Poppi delivers an indulgent and unforgettable Koh Samui escape.



Facilities

Surfing • Villa • Air-Con • Private Pool • Ideal for Kids • Chef/Cook Available • Ideal for Teens • Beach Nearby • <1hr to Airport • Parking Space • Wi-Fi/Internet • Seaview • Washing Machine • Coffee Machine • Outstanding Landscapes • Outdoor Pursuit & Activities • Hairdryer • Tourist Towns & Villages • Laptop Friendly Workspace • Gym/Fitness Room • Dishwasher • Microwave • Satellite TV • Spa Treatments Available • On-Site Concierge • Transfers Included • Breakfast Included • High Chair(s)

Interior & Grounds

Interior

- Fully equipped with kitchen dining table for 8 guests.
- Bedrooms with queen-size bed and ensuite bathroom
- Bedrooms with queen-size bed and ensuite bathroom
- Bedrooms with king-size bed with ensuite bathroom and a sitting area (the convertible sofa can sleep 2 extra guests)

Exterior

- The large terrace has plenty of seating with a combination of massive teak sunbeds and a large outdoor sofa. The L-shaped infinity pool has a shallow area for small children with a gradual slope towards a deep section.
- The pool is 9 meters long providing enough length for morning laps or floating in tranquillity. The pool also includes a long bench with Jacuzzi jets.
- Down a flight of stairs from the villa is a large waterfront lawn that slopes down to intimate private beach.
- The entire property is enveloped by a well-maintained Zen garden.

Additional facilities

- Five-burner stovetop
- Oven
- Side by side fridge/freezer
- Fully stocked wine fridge
- Microwave
- Dishwasher



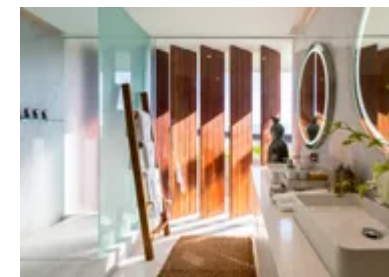
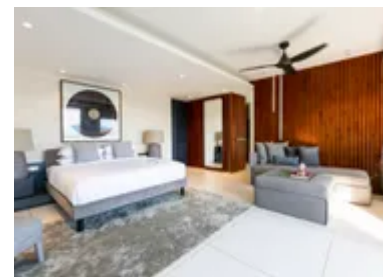
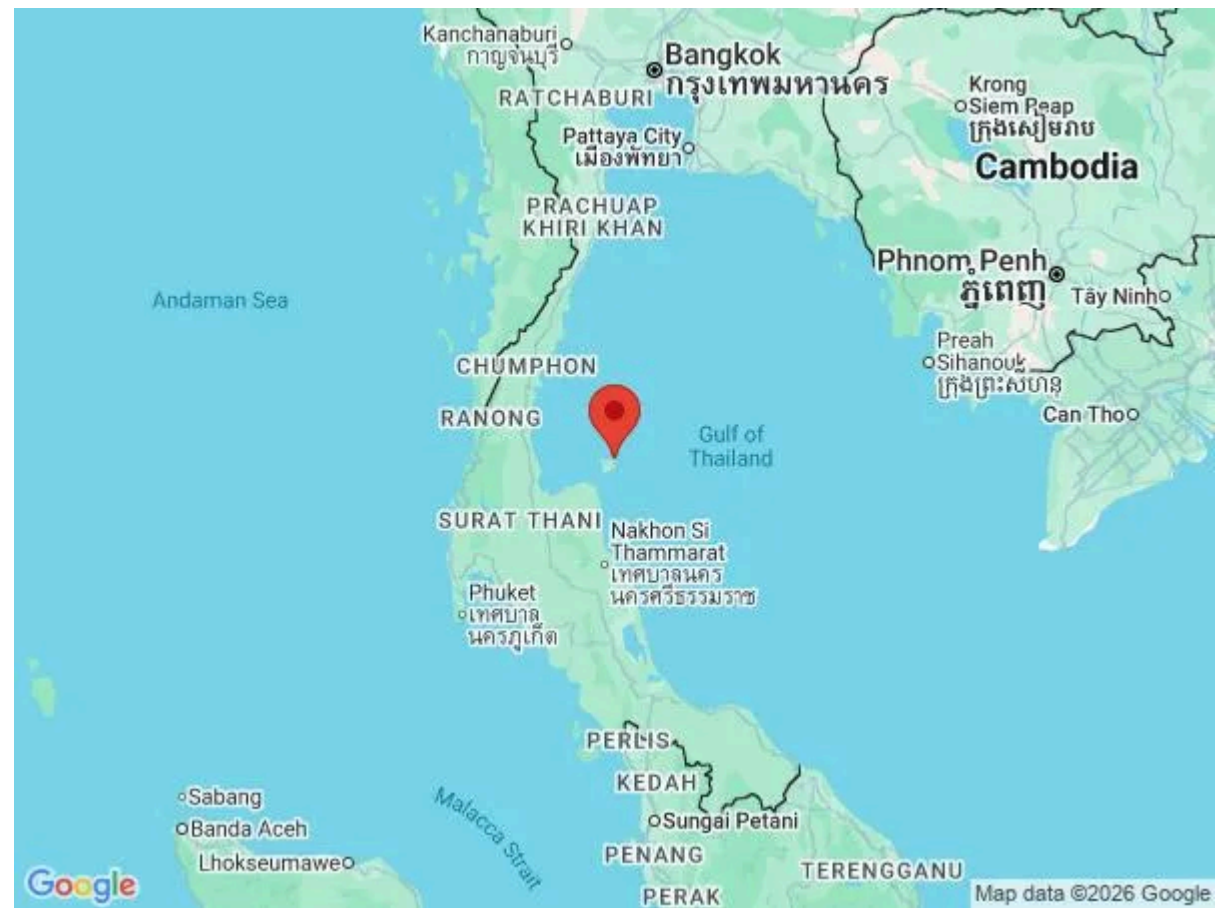
Location & Local Information

Villa Poppi is set within an exclusive retreat in the highly desirable Plai Laem area, just a 20-minute drive from Koh Samui's airport. Elevated on a hillside, the villa enjoys sweeping panoramic views across the island and out towards Koh Phang Nga, offering both a sense of privacy and an ideal base for exploring the island. Plai Laem is known for its peaceful atmosphere, beautiful beaches and proximity to key landmarks, including the iconic Big Buddha and the calm shores of Choeng Mon and Bangrak beaches.

From the villa, guests can easily access Koh Samui's diverse attractions, from cultural highlights such as temples, waterfalls and the Secret Buddha Garden to lively hotspots like Fisherman's Village in Bophut and the vibrant Chaweng Beach. Boat trips to Ang Thong National Marine Park or Koh Nang Yuan promise snorkelling, kayaking and unforgettable island scenery, while Koh Phangan offers famous full-moon and half-moon celebrations. Whether seeking relaxation on golden sands, cultural exploration or energetic nightlife, Villa Poppi's location provides effortless access to the very best of Koh Samui.

Local Amenities

Nearest Airport	Samui International Airport (8 km)
Nearest Bar/Pub	Again Beach Bar (600 m)
Nearest Restaurant	Dining on the Hill (400 m)
Nearest Supermarket	Tops daily Thanon Thongsai (2 km)
Nearest Town/City	Samui Town (9 km)
Nearest Village	Fisherman's Village (8 km)



What we love

- The fabulous Villa Poppi is the perfect luxury choice for relaxation and pampering with its exquisite Italian furnishings, fabulous artwork, outstanding amenities and top-of-the-range fittings.
- Guests staying at the villa enjoy breathtaking 180-degree vistas of the sea from almost every room and every terrace.
- The villa boasts outside space, including landscaped gardens, stunning terraces, luxury outdoor furnishings and a fantastic infinity pool with a shallow section for little ones and a bench and jacuzzi jets for a spot of pampering.
- Guests staying at the villa enjoy effortless access to a private beach with kayaks and paddleboards.
- Guests enjoy delicious breakfasts delivered daily to the villa, shared use of an excellent gym, impressive concierge services and an experienced manager who will go to very long lengths to ensure that you experience the holiday of your dreams.

What you should know...

- Children are warmly welcomed at Villa Poppi. Babysitting can be arranged with a 24-hour notice, and nannies are available with a week's prior notification. The pool features a shallow area, along with toys and inflatables for young ones to enjoy.
- Delicious daily breakfasts will be delivered to the villa each morning. You can choose between a classic Western breakfast featuring freshly baked bread, jams, yoghurt, fruits and beverages or a Thai option with congee or soup, accompanied by juices, coffee and tea. For remarkable culinary experiences, including poolside barbecues, bespoke feasts, or cooking classes, private chefs can be arranged in advance. Room service is also at your disposal.
- The villa comes with a dedicated wine fridge. If you have specific preferences for your regular fridge, it can be stocked for an additional charge upon request. The locally distilled rum is particularly popular!
- The master bedroom suite offers a sofa bed that can be used for an extra two sleeping spaces.
- Nestled into the hillside with multiple levels, the villa might not be suitable for those with limited mobility.

Terms & Conditions

- **Security deposit:** \$3000 charged to client's credit card by owner upon arrival and refunded two weeks after departure, subject to a full inspection.
- **Arrival time:** 14:00 - 20:00
- **Departure time:** 11:00
- **Energy costs included?:** Yes, included in the rental price.
- **Linen & towels included?:** Yes, included in the rental price.
- **Changeover day:** Flexible.
- **Smoking Allowed?:** Smoking & Vaping are not permitted.
- **Minimum stay:** 1 - 3 nights, depending on season. All other duration on request.
- **Heating costs included?:** Not available on this property.
- **Pool heating charge?:** Not available on this property.
- **Tax:** Tourist Tax not applicable.
- **Internet access?:** Wi-Fi internet access included.
- **Pool towels included?:** Yes, included in the rental price.