

Fairytale Folly

Region: The North East **Sleeps:** 2

Overview

Nestled within the verdant landscapes of Northumberland, The Fairytale Folly stands as an enchanting treasure within the grounds of Muschamp Hall. Embodying a captivating blend of modern innovation and timeless allure, this architectural masterpiece finds its home amidst the resplendent embrace of an Italian-style garden, creating an ambience that is beguiling.

With a fusion of architectural styles that gracefully marries contemporary design with original elegance, The Folly exudes a character that is as distinctive as it is inviting. This retreat, tailored for the romantic at heart, encapsulates the essence of a perfect getaway for two souls seeking solace and connection.

As the door opens into the three-story structure, a spacious ground floor living area reveals itself. The heart of this haven lies in its fully equipped open-plan kitchen, a culinary haven that leaves no desire unfulfilled. From the oven to the hob, the microwave to the dishwasher, every need is thoughtfully anticipated. Adjacent to this culinary space is an intimate dining area for two, seamlessly leading to the outdoor Italian garden. Here, a private seating enclave awaits, offering a front-row seat to the pageantry of the natural surroundings.

Ascending to the first floor, guests are greeted by the sanctuary of the master bedroom. An intimate expanse of space suffused with charm, this chamber is an ode to comfort and serenity. Yet, it is the second floor that truly captures the essence of The Folly's personality. A balcony, suspended as if in a dream, extends over the Italian Garden's beauty.

Ascending yet again, a stairway leads to the pinnacle of this architectural gem - the bathroom. A testament to the



harmonious marriage of old-world elegance and contemporary design, this space is adorned with a freestanding bath, standing harmoniously alongside a separate shower, toilet, and wash basin. However, it is the crowning glory of the room that steals the show: a glass casing that houses the inner workings of a clock face, a poignant homage to the building's historic roots.

The Fairytale Folly, cocooned in nature, is more than a retreat; it is a story, a testament to the enduring romance between architecture and nature. In every nook and cranny, the whispers of the past dance in harmony with the present, offering a haven for a romantic escape!

Facilities

Golf Nearby • Stag/Hen Allowed • Ideal for Xmas/NY • Not for little ones • Cycling • Tennis Nearby • Walking/Hiking Paths • Romantic • Special Offer • Has Discount • Not For Little Ones • Manor • Quirky (Unique) • Pets on Request • Parking Space • Wi-Fi/Internet • Rural Location • Washing Machine • Outstanding Landscapes • Outdoor Pursuit & Activities • Tourist Towns & Villages • TV • DVD • Tumble Dryer • Dishwasher • Microwave • Heating • Kid-friendly excursions • Playground • Fenced Grounds

Interior & Grounds

Fairytale Folly

Ground Floor

- Living area with flat screen TV and DVD player
- Fully equipped kitchen
- Dining area leading out to Italian garden
- Separate toilet

First Floor

- Master bedroom with balcony

Second Floor

- Bathroom with freestanding bath

Outside Grounds

- Gardens
- Italian pond
- Victorian walled garden
- Woodland
- Gardens
- Childrens play area with swings and slide
- Secure bike storage
- Car parking

Additional Facilities

- Wi-Fi
- TV and DVD player
- DVD's and books



Location & Local Information

Nestled amidst the serene landscapes of Northumberland, the Fairytale Folly stands as a captivating holiday haven. Situated within the enchanting grounds of Muschamp Hall, this destination offers a perfect blend of tranquillity and beauty. The hallmark of its location is the stunning Italian-style garden that envelops the Folly, creating an idyllic backdrop for a memorable getaway.

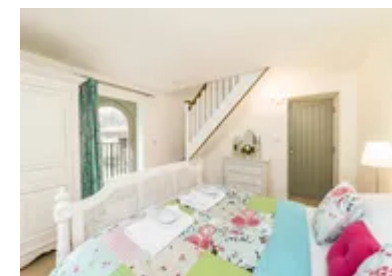
Set within the heart of Northumberland's countryside, the Fairytale Folly offers a retreat from the bustle of daily life, inviting guests to immerse themselves in the natural beauty that surrounds it. The location provides a sense of seclusion while remaining conveniently accessible to nearby attractions. Guests can explore the charms of the local area, including scenic walking trails, historic sites, and charming villages.

Whether seeking a romantic escape or a rejuvenating break, the Fairytale Folly's location offers a picturesque setting for relaxation and exploration. With its fusion of modern luxury and timeless elegance, paired with the allure of its Italian garden, this destination promises an unforgettable holiday experience in the heart of Northumberland's enchanting landscape.



Local Amenities

Nearest Airport	Newcastle International Airport (83 km)
Nearest Airport 2	Edinburgh Airport (129 km)
Nearest Village	Belford (3 km)
Sightseeing	Bamburgh Castle (13 km)
Sightseeing	Alnwick Castle (28 km)
Nearest Supermarket	Co-op Food - Belford (3.5 km)



Nearest Bar/Pub

**The Black Swan
(3 km)**

What we love

- Nestled in Northumberland's serene landscapes with an Italian-style garden for a romantic backdrop
- Perfect escape from the daily hustle, offering tranquillity while being close to local attractions
- Unique three-story Folly blends modern comfort with historic charm, featuring a captivating clock-face bathroom
- Private seating area amidst wildlife, fully equipped kitchen, and balcony overlooking the garden for a dreamy escape

What you should know...

- The property features multiple staircases; caution is advised for guests with mobility issues or young children
- While the garden offers a nature-filled experience, guests should be mindful of wildlife interactions
- The balcony's height overlooking the Italian garden requires attention, especially for those with a fear of heights

Terms & Conditions

- **Security deposit:** £200 charged to the client's credit card as a pre-authorisation at least 2 weeks prior to arrival and refunded two weeks after departure, subject to a full inspection.
- **Arrival time:** 4.00 p.m.
- **Departure time:** 10.00 a.m.
- **Energy costs included?:** Yes.
- **Linen & towels included?:** Yes.
- **Pets welcome?:** Yes, on request only and with prior agreement with the owner.
- **Changeover day:** Mondays and Fridays.
- **End of stay cleaning:** Standard changeover clean included in the price. Guests are required to leave the accommodation clean, tidy and in the same condition as on their arrival. Any extra cleaning, laundry, maintenance and/or rubbish disposal required will be charged against the security deposit.
- **Smoking Allowed?:** Not allowed.
- **Minimum stay:** Bookings are accepted for 7-night stays starting on a Monday or Friday, 3-night stays starting on a Friday, or 4-night stays starting on a Monday.
- **Heating costs included?:** Yes.
- **Internet access?:** Wi-Fi internet access included.
- **Stag & Hen Do Allowed? :** Weddings, stag/hen parties and any special events are on request only and subject to prior arrangement with the owner and additional charges.