

Chalet Loti

Region: 3 Valleys Sleeps: 14

Overview

Nestled in the charming alpine village of Saint-Martin-de-Belleville, Chalet Loti offers a refined retreat that combines modern comfort with authentic mountain character. Located in the desirable Villarencel area, just a short walk from the village centre, this new chalet enjoys sweeping views of the Belleville peaks, creating a stunning backdrop for a memorable stay.

Spread across four levels and 360 square metres, the chalet accommodates up to fourteen guests. Six elegant double bedrooms, each with a private bathroom, are arranged across the second and top floors, providing privacy and warmth in equal measure along with a bunk room with for single beds, perfect for younger travellers.

The third floor is designed for gathering, with a spacious living area centred around a welcoming fireplace, a stylish dining space, and a fully equipped kitchen for culinary creativity. Terraces and balconies extend the living areas, perfect for soaking in the mountain air and panoramic views.

For relaxation, the lower level houses a wellness space with a heated indoor pool and sauna, ideal after a day on the slopes or exploring the valley.

Saint-Martin's restaurants and boutiques are just minutes away, while direct access to nearby ski slopes makes Chalet Loti an excellent base for winter sports. In summer, hiking trails wind through pristine alpine landscapes, offering another perspective on the region's beauty.

Balancing elegant interiors, thoughtful design, and an exceptional location, Chalet Loti promises an unforgettable alpine experience in the heart of the French Alps.



Facilities

Ski Lift Nearby • Wi-Fi/Internet • Boot Heaters • Ski Room • Bus/Shuttle To Slopes • Recommended • Walk To Slopes • Lakes and Mountains • Ski-In/Ski-Out • Washing Machine • TV • Skiing • Self-Catered • Ski Chalet • Private Pool • Walk to Village • Cots (Cribs) • Maid Service Available • Instagrammable • Modern • Transfers Available • Bathroom Toiletries • Heated Pool • Indoor Pool • Ideal for Babies & Toddlers • Ideal for Kids • Ideal for Teens • Walk to Restaurant • Tumble Dryer • Dishwasher • Microwave • Electric Car Charger • All Bedrooms En-Suite • Sauna/Steam • Working Fireplace/Woodburner • Heating • High Chair(s) • Outstanding Landscapes • Outdoor Pursuit & Activities • Tourist Towns & Villages

Interior & Grounds

The Chalet

First Floor

- Wellness area
- Heated indoor swimming pool
- Sauna

Second floor

- Bedroom 1: Double bed with en-suite
- Bedroom 2: Double bed with en-suite
- Bedroom 3: Double bed with en-suite

Third floor

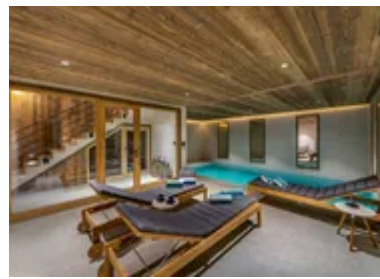
- large living room with fireplace
- Dining room
- Modern, fully equipped kitchen
- Bedroom 4: Double bed with en-suite
- Bedroom 5: Double bed with en-suite
- Bedroom 6: Kids bedroom with four bunk beds and en-suite

Outside Grounds

- Balconies

Additional Facilities

- Wi-Fi
- Garage
- Ski room
- Laundry Room
- Baby cot
- High chair
- SONOS speaker
- TV
- Fridge
- Freezer
- Kettle
- Toaster
- Induction hobs
- Oven
- Vacuum
- Boots heater



Location & Local Information

Nestled in the heart of Saint-Martin-de-Belleville at 1,450 metres, Chalet Loti offers an idyllic retreat in the French Alps. This charming village combines authentic alpine character with year-round appeal, surrounded by sweeping views of the Belleville mountains.

Perfectly placed for ski enthusiasts, the chalet sits near the slopes and provides access to the world-famous Three Valleys, one of the largest ski areas on the planet. From exhilarating downhill runs to gentle trails, the opportunities are endless.

In summer, the region transforms into a playground for hikers, cyclists, and nature lovers. Verdant meadows, sparkling lakes, and scenic trails create the perfect backdrop for outdoor exploration.

Just a short stroll away, the village centre offers traditional shops, inviting restaurants, and a welcoming alpine atmosphere. Whether for adventure or relaxation, Chalet Loti is a gateway to stunning landscapes and unforgettable moments in the French Alps.

Local Amenities

Nearest Airport	Geneva (137 km)
Nearest Airport	Lyon (181 km)
Nearest Bar/Pub	Pourquoi Pas (270 m)
Nearest Piste	Bioley (350 m)
Nearest Restaurant	La Voute (350 m)
Nearest Ski Hire	Skiset Togosports (400 m)
Nearest Ski Lift	Saint Martin 1 (400 m)



Nearest Supermarket	Huit a huit (240 m)
Nearest Village	Saint-Martin-de-Belleville (260 m)

What we love

- Chalet Loti offers awe-inspiring vistas of the Belleville mountains, perfect for sunset cocktails on the terrace.
- Whether you're skiing in winter or hiking in summer, this chalet's location caters to outdoor enthusiasts year-round.
- A short stroll takes you to Saint-Martin-de-Belleville's delightful centre, brimming with traditional shops and restaurants, enhancing your Alpine experience.

What you should know...

- Be prepared for changing weather conditions, especially during winter, which can affect travel and outdoor activities.
- The chalet's mountainous setting may require extra caution when navigating icy paths or hilly landscapes.
- The chalet has a bunk bedroom, best suited to children wanting to share.
- While the chalet is located in the village of Saint-Martin-de-belleville, the walk to the slopes can be tricky with all of your ski gear. It is best to make use of the free shuttle bus to the front neige.

Terms & Conditions

- **Security deposit:** Secure link sent to the client's email to fill in the details of the client's bank card online 2 weeks before the arrival for the amount of €10000. Funds won't be taken or blocked on the credit card in this case.
- **Arrival time:** 5.00 PM.
- **Departure time:** 10.00 AM.
- **Energy costs included?:** Yes, included in the rental price.
- **Linen & towels included?:** Yes, included in the rental price.
- **Pets welcome?:** Not allowed.
- **Other Ts and Cs:** Please note that 1 cot and 1 highchair are both available for an extra cost Cot: 40€ per week Highchair: 30€ per week
- **Changeover day:** Saturday.
- **End of stay cleaning available?:** Yes, included in the rental price. However, guests are required to leave the accommodation clean, tidy and in the same condition as on their arrival. Any extra cleaning, laundry, maintenance and/or garbage disposal required will be charged against the security deposit.
- **Smoking Allowed?:** Smoking & Vaping are not permitted.
- **Other 2:** Please kindly note that the cabin style bunk room is usually only suitable for younger guests. Please contact our friendly team for any further information.
- **Minimum stay:** 7 nights.
- **Heating costs included?:** Yes, included in the rental price.
- **Tax:** French Visitors Tax payable alongside balance (typically costs €1-€5 per adult per night- please enquire if exact amount is required).
- **Internet access?:** Yes, included in the rental price.