

Apartment Aprais

Region: 3 Valleys Sleeps: 6

Overview

Summer might be sensational, but we welcome you to a genuinely decadent winter utopia for lovers of the much-smeared winter months. Snuggled amongst the piercing French Alps, you'll find Apartment Aprais at the entrance to Courchevel. There are two fundamental types of visitors to this magnificent area – those who seek privacy and peacefulness and those who seek adrenaline and exploration. You may very well wish to combine the two.

Located on the lively Park City Street, you and your party can enjoy easy access to the slopes and snow front and the resort's wide range of renowned restaurants and ski rental companies. Decked out in a truly contemporary style, you can enjoy vast panoramas of the mountain while enjoying the chalet's cosy, bright cheer. Within, you'll find a Christmas elf's home personified.

Perfect for a party of six, whether travelling with friends or family, you've come to the perfect place. This property has a slightly kitsch charm with its brown leather sofas, festive pillows and cushions, figurines, see-through seating and unique stools. Watch TV in the living area, sit at the dining table together or rustle up something tasty in the kitchen. The communal living space allows you to spend quality time together no matter what you decide to do. The kitchen, adorned in sleek snow white, is shot through with pops of vibrant red.

There's an interesting contrast between tradition (think wood, logs and hangings) and sleek sensibility (modern flooring, white tabletops). The bedrooms are spacious, large, and decorated so that they're warm and light. Wood is utilised effectively here, as are blushes of Christmas red. With charming winter-based artwork adorning the walls, this is a calming, serene environment to doze off after a day of exploration.



The children's room is complete with bunk beds and TV, and the bathrooms borrow some zen-like sanctuary atmosphere with a dark circulate bowl-like sink, a wood-rimmed mirror and a long tub for luxuriating. With three bedrooms and two bathrooms, you can also head out onto the balcony to take in the beguiling vistas beyond. Looming snow-capped mountains and wild green forests await.

Facilities

Skiing • Ski Lift Nearby • Walk To Slopes • Lakes and Mountains • Washing Machine • Coffee Machine • Hairdryer • Self-Catered • Ski-In/Ski-Out • TV • Wi-Fi/Internet • Cots (Cribs) • Modern • Chalet Apartment • Transfers Available • Ideal for Kids • Ideal for Teens • Walk to Restaurant • Tumble Dryer • Dishwasher • Microwave • High Chair(s) • Outstanding Landscapes • Outdoor Pursuit & Activities • Tourist Towns & Villages

Interior & Grounds

The Apartment

Interior

- Living area
 - Dining area
 - Open kitchen
 - Balcony
 - TV lounge
 - Fully fitted kitchen
-
- Master bedroom: TV, balcony with mountain views, one double bed, ensuite bathroom: bathtub, toilet, single hand basin, washing machine, laundry dryer.
 - Double bedroom: TV, one double bed.
 - Double bedroom: TV, one bunk bed (sleeps two).
 - Independent bathroom: Shower, toilet, single hand basin.

Outside Grounds

- Balcony

Additional Facilities

- Bathroom products
- Reception in agency
- Elevator
- Parking space
- Ski locker
- TV
- Wi-Fi
- Ceramic hobs
- Dishwasher
- Fridge
- Kettle
- Kitchen exhaust hood
- Microwave
- Nespresso coffee machine
- Oven
- Raclette machine
- Toaster
- Vacuum
- Washing-drying machine



Location & Local Information

Your home for your stay is in the heart of one of the world's most legendary and recognised ski resorts.

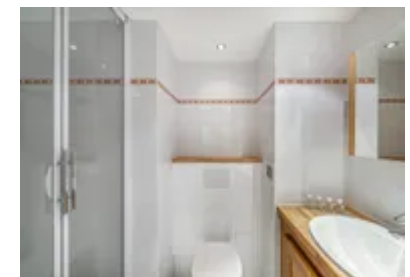
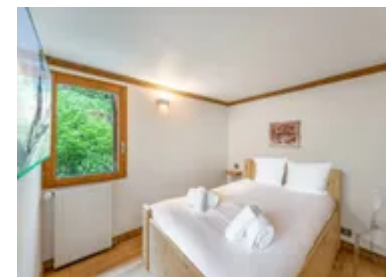
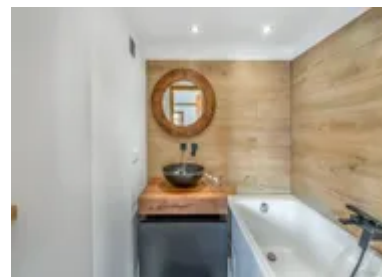
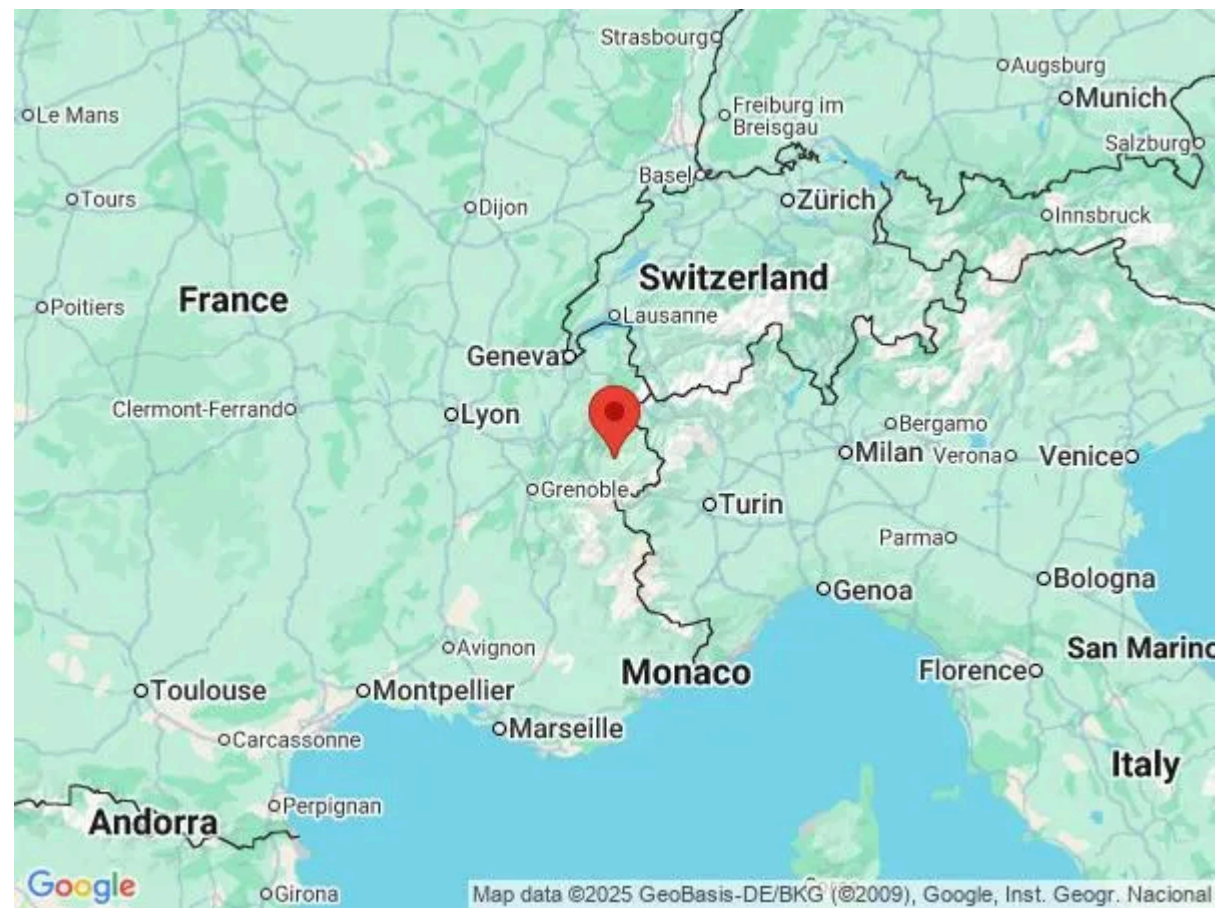
It's easy to get here with major airports, including Geneva, Lyon, Grenoble and Chambéry. Although the distance between airports varies, you'll be able to arrive at the property within three hours by car. Courchevel is well-vested in tourism, making it logistically easy. Upon arrival, you can use the shuttle service, private taxi or a private vehicle rental service directly from the airport.

The draw here is the staggering natural beauty. Its charm is that it's idyllic in a way few places today genuinely are. It embodies and celebrates winter in every way, making it ideal for those who favour (and savour) the colder months. You can enjoy the fairy-tale woods and the dominating views of the famed Alps.

You're perfectly positioned to enjoy the slopes – closest to the Front de Neige slope. You can very quickly enjoy adventures in this snowy wonderland. It doesn't matter if you're a veteran glued to your skis or a total beginner who wants to try something new; the terrain is vast and diverse, allowing skiers of all experience levels to test their mettle. Experts can enjoy challenging, adrenaline-inducing slopes, while beginners enjoy a softer introduction to this extreme sport.

Although skiing is central to many people's experiences of the area, there's plenty more to enjoy in Courchevel, including paragliding over the peaks, touring the mountain and enjoying a traditional horse-drawn sleigh. The village of Courchevel itself is a fantastic village where you can effortlessly whittle away some time. The streets are plentiful with pretty boutique shops where you can select local foods, winter wear and Alpine souvenirs for your nearest and dearest.

Those with an affinity for gastronomy will enjoy the thriving food scene. There are heavenly French pastries



on offer, extravagant hot chocolates, and a vast array of gourmet restaurants.

Local Amenities

Nearest Airport	Geneva Airport (188km)
Nearest Airport 2	Lyon-Saint Exupéry Airport (186km)
Nearest Town/City	Courchevel (8.3km)
Nearest Restaurant	Le San Marco (46km)
Nearest Bar/Pub	Au planté de bâton (500m)
Nearest Piste	Front de Neige (60m)
Nearest Supermarket	Carrefour Montagne (550m)
Nearest Ski Hire	Intersport (110m)
Nearest Ski Lift	Verdons / Chenus / Jardin Alpin / Loze (20m)

What we love

- The little touches here were just lovely. I really liked the artwork, the figurines of skiers and the cushions. It felt like the perfect place for my children to unwind.
- The views from the terrace were just the best. I couldn't stop taking photos.I had the best nights sleep here. So cosy and comfortable. Like sleeping in Santa's workshop.We made the most of the communal space.
- We made dinner together, ate together, and watched TV together. We could really make the most of true quality time.

What you should know...

- Courchevel flaunts a radiant après-ski scene, but it has yet to be known for its nightlife. If that's your preference, consider another resort.
- Families commonly visit the area, and it is well set up to entertain them, but please ensure you keep an eye on all children during your stay.
- If travelling with babies or infants, you can notify the property in advance to ensure that highchairs and baby cots can be provided and set up before you arrive.

Terms & Conditions

- **Security deposit:** Secure link sent to the client's email to fill in the details of the client's bank card online 2 weeks before the arrival for the amount of €3000. Funds won't be taken or blocked on the credit card in this case.
- **Arrival time:** Check-in 5.00 PM.
- **Departure time:** Check-out 10.00 AM.
- **Energy costs included?:** Yes, included in the rental price.
- **Linen & towels included?:** Yes, included in the rental price.
- **Pets welcome?:** Not allowed.
- **Changeover day:** Saturday.
- **End of stay cleaning available?:** No, but scheduled cleaning on request (additional charge). However, guests are required to leave the accommodation clean, tidy and in the same condition as on their arrival. Any extra cleaning, laundry, maintenance and/or garbage disposal required will be charged against the security deposit.
- **Smoking Allowed?:** Smoking & Vaping are not permitted.
- **Minimum stay:** 7 nights.
- **Heating costs included?:** Yes, included in the rental price.
- **Tax:** French Visitors Tax payable alongside balance (typically costs €1-€5 per adult per night- please enquire if exact amount is required).
- **Internet access?:** Wi-Fi internet access included.