

Apartment Gillou

Region: 3 Valleys Sleeps: 7

Overview

Set in the picturesque Courchevel region, Apartment Gillou is an exquisite retreat that embodies both elegance and modernity. Spanning across a bright and spacious interior, this luxurious accommodation offers the perfect blend of comfort and style, ensuring an unforgettable holiday experience for the whole family.

When you enter the apartment, you will immediately be greeted by a sense of warmth and sophistication. The interior design is a visual treat, featuring an incredibly modern and light decor with touches of wood and faux fur that evoke a sense of Alpine charm. The combination of contemporary aesthetics with traditional mountain elements creates a harmonious balance, enhancing the overall ambience and adding to the apartment's appeal.

The heart of the apartment lies in its open-plan lounge, dining area, and kitchen, seamlessly blending style and functionality. The lounge exudes an inviting ambience, with plush seating arrangements and large windows that allow natural light to flood the space, creating an airy and welcoming atmosphere. The dining area offers ample space for gatherings, making it an ideal spot to enjoy delicious meals while relishing the stunning views outside. These meals can be rustled up in Apartment Gillou's modern kitchen, which is equipped with top-of-the-line appliances and everything needed to whip up culinary delights. Whether it's a quick breakfast or a gourmet dinner, this kitchen ensures that preparing meals is both effortless and enjoyable.

The apartment boasts two double bedrooms, each designed to provide the utmost relaxation. One of the bedrooms features a tastefully designed ensuite bathroom, adding an extra touch of convenience and privacy. This room is also equipped with a flat-screen TV,



allowing occupants to unwind with their favourite shows or movies after a day of outdoor adventures. In addition, the apartment has a charming cabin room capable of accommodating up to three guests. The cleverly designed cabin room includes a comfortable double bed as well as a suspended single, providing an exciting and cosy experience for those who stay here.

Facilities

Skiing • Ski Lift Nearby • Walk To Slopes • Lakes and Mountains • Washing Machine • Coffee Machine • Hairdryer • Self-Catered • Ski-In/Ski-Out • TV • Wi-Fi/Internet • Cots (Cribs) • Modern • Chalet Apartment • Transfers Available • Ideal for Kids • Ideal for Teens • Tumble Dryer • Dishwasher • Microwave • Heating • High Chair(s) • Outstanding Landscapes • Outdoor Pursuit & Activities • Tourist Towns & Villages

Interior & Grounds

The Apartment

Apartment Interior

- Master bedroom with double bed (180 x 200) and TV and ensuite bathroom
- Double bedroom (160 x 190) with wardrobe
- Cabin room with one suspended bed (90 x 190) and one double bed (140 x 190)
- Separate WC
- Independent bathroom with bathtub, towel dryer, hairdryer and single hand basin

Outside Grounds

- Ski locker
- Elevator
- Balcont

Additional Facilities

- International channels
- Netflix
- Satellite TV
- Wifi
- Wifi 4G box (on request)
- Baby cot and high chair (on request)
- Dishwasher
- Induction hobs
- Iron
- Ironing board
- Kettle
- Kitchen exhaust hood
- Microwave
- Nespresso coffee machine
- Oven
- Raclette machine
- Toaster
- Vaccum
- Washing-drying machine
- Bathroom products
- Reception in agency

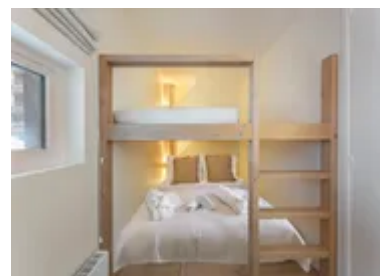


Location & Local Information

Apartment Gillou enjoys an enviable location that promises an unforgettable alpine experience. Situated in one of the most sought-after ski destinations in the world, Courchevel, this luxurious accommodation offers easy access to a range of activities and amenities that cater to all types of holidaymakers, from thrill-seekers to relaxation enthusiasts. Here, guests have immediate access to some of the finest ski slopes in the French Alps. Whether you're a seasoned skier or a beginner, you'll find a variety of pistes suitable for all skill levels. The resort is renowned for its well-groomed runs, excellent snow conditions, and top-notch ski schools, making it an ideal destination for families and individuals looking to hone their skiing or snowboarding skills.

Apart from skiing, the region offers a plethora of winter activities to indulge in. For those seeking an adrenaline rush, there are opportunities for snowshoeing, snowmobiling, and ice climbing. The resort's natural beauty also makes it perfect for scenic walks and snow hikes, allowing visitors to immerse themselves in the breathtaking landscapes of the Three Valleys region. During the warmer months, Courchevel transforms into a haven for outdoor enthusiasts. The verdant mountains become an ideal setting for hiking and mountain biking trails, catering to all levels of fitness and adventure. The lush alpine meadows come to life with colourful flora and fauna, providing a serene escape from bustling city life.

As for amenities, Courchevel boasts a vibrant village atmosphere, where guests can explore charming boutiques, high-end stores, and local artisan shops. The resort is renowned for its excellent dining options, offering a diverse range of restaurants, from Michelin-starred establishments to cosy mountain chalet eateries serving hearty Savoyard dishes. The resort also offers a selection of world-class spas and wellness centres. After a day of exploring the mountains, guests can unwind in the saunas and steam rooms or indulge in soothing massages and treatments - pure bliss!



The resort's après-ski scene is lively and entertaining, with numerous bars, lounges, and nightclubs providing a vibrant nightlife experience. Whether guests prefer a quiet drink by the fireplace or dancing the night away, Courchevel caters to all tastes.

Local Amenities

Nearest Airport	Geneva Airport (143km)
Nearest Airport 2	Lyon-Saint Exupéry Airport (186km)
Nearest Town/City	Courchevel (8.3km)
Nearest Restaurant	O'BôYA Restaurant Grill (300m)
Nearest Bar/Pub	Au planté de bâton (500m)
Nearest Piste	Front de neige / Snow front (50m)
Nearest Supermarket	Carrefour Montagne (600m)
Nearest Ski Hire	Intersport (350m)
Nearest Ski Lift	Verdons, Loze, Jardin Alpin (100m)

What we love

- The kids loved the cabin bedroom with double bed and suspended single.
- Apartment Gilou's open-plan design meant that we could enjoy the gorgeous views from everywhere.
- It was wonderful to have ski-slopes and other resort attractions within easy walking distance.

What you should know...

- Only the master bedroom at Apartment Gilou has ensuite facilities. The other bedrooms share a stylish and modern bathroom with a bathtub.
- A cot and highchair are available on request for the youngest guests.
- Home comforts provided for your entertainment include WiFi, satellite TV and Netflix.

Terms & Conditions

- **Security deposit:** Secure link sent to the client's email to fill in the details of the client's bank card online 2 weeks before the arrival for the amount of €1500. Funds won't be taken or blocked on the credit card in this case.
- **Arrival time:** Check-in 5.00 PM.
- **Departure time:** Check-out 10.00 AM.
- **Energy costs included?:** Yes, included in the rental price.
- **Linen & towels included?:** Yes, included in the rental price.
- **Pets welcome?:** Not allowed.
- **Changeover day:** Saturday.
- **End of stay cleaning available?:** Yes, except the kitchen and scheduled cleaning on request (additional charge). However, guests are required to leave the accommodation clean, tidy and in the same condition as on their arrival. Any extra cleaning, laundry, maintenance and/or garbage disposal required will be charged against the security deposit.
- **Smoking Allowed?:** Smoking & Vaping are not permitted.
- **Minimum stay:** 7 nights.
- **Heating costs included?:** Yes, included in the rental price.
- **Tax:** French Visitors Tax payable alongside balance (typically costs €1-€5 per adult per night- please enquire if exact amount is required).
- **Internet access?:** Wi-Fi internet access included.