

# Saint Pierre Penthouse

Region: France    Sleeps: 9

---

## Overview

Saint Pierre Penthouse offers a luxurious Parisian retreat where opulence meets unparalleled views of the iconic Eiffel Tower. Nestled amongst the city's skyline, this 250sqm of interior space plus the 100sqm rooftop oasis is a true gem that promises an enchanting experience.

As you ascend to the rooftop, you'll be greeted by plush seating that invites you to sink into comfort while soaking in the breath-taking panoramic vistas of the Eiffel Tower. This remarkable backdrop adds a touch of magic to every moment, making it the ideal spot for relaxation and contemplation. Adjacent to the lounge area, a beautifully set dining space awaits, providing the perfect setting for al fresco meals with your loved ones. And for the culinary enthusiast in you, the rooftop boasts a fully equipped summer kitchen where you can turn your gastronomic dreams into reality against the backdrop of the Parisian skyline.

But the true enchantment happens at night when the city lights twinkle and the Eiffel Tower becomes a mesmerising spectacle. The rooftop transforms into a magical space, ideal for intimate gatherings and unforgettable moments. It's a haven where cherished memories are created against the backdrop of the City of Lights.

Inside the Saint Pierre Penthouse, luxury and stunning views continue to impress. The spacious living room with floor-to-ceiling windows offers more spectacular views, complemented by elegant sofas and a rich wooden library – the perfect place to unwind with a good book.

A few steps away, the wooden bar invites you to savour convivial moments in a cosy setting. At the same time, the dining room promises unforgettable meals with the Eiffel Tower as your dining companion. These exceptional



spaces guarantee a unique experience in one of the world's most beautiful cities.

The kitchen, flooded with natural light and an Eiffel Tower view through the large bay window, is a culinary haven designed for togetherness. Whether it's a hearty breakfast to start the day or a delicious dinner to end it, this warm and welcoming kitchen sets the stage for memorable moments.

The penthouse features five splendid bedrooms, accommodating up to nine people, making it a perfect haven for families or groups of friends. Each room combines elegance with comfort, offering a peaceful retreat after exploring the city's wonders. The exquisite master bedroom on the top floor provides direct access to the terrace, waking you up to breath-taking views each morning. The master bedroom's ensuite bathroom features a panoramic bubble bath with stunning vistas of La Défense. Four more beautifully appointed bedrooms await on the floor below, along with two additional bathrooms, ensuring comfort and convenience for all guests.

Experience the epitome of sophistication, relaxation, and panoramic beauty in this exclusive Parisian penthouse!

As mentioned in...



## Facilities

Chef/Cook Available • Laptop Friendly Workspace • Maid Service Available • Wow Factor • Romantic • Walk to Village • Air-Con • Wi-Fi/Internet • City Homes & Apartments • Aquarium • Kid-friendly museum • Kid-friendly excursions • Water excursions/Boat trips • Amusement park • Transfers Available • No car required • Recommended • Ideal for Babies & Toddlers • Ideal for Kids • Ideal for Teens • Hot Tub • Walk to Restaurant • <1hr to Airport • Microwave • Coffee Machine • Hairdryer • Satellite TV • TV • Working Fireplace/Woodburner • Heating • Fenced Grounds • Tourist Towns & Villages • Historical Sites • Boat Trips

# Interior & Grounds

## The Apartment

### *Interior*

- Living room with floor-to-ceiling windows
- Wooden Bar
- Built-in wooden library
- Dining room with Eiffel Tower views
- Fully equipped kitchen with breakfast table

### *First Floor*

- Bedroom 2: Single bed
- Bedroom 3: King/ Twin beds
- Bedroom 4: King/ Twin beds
- Bedroom 5: King-size beds
- Bathroom 1
- Bathroom 2

### *Second Floor*

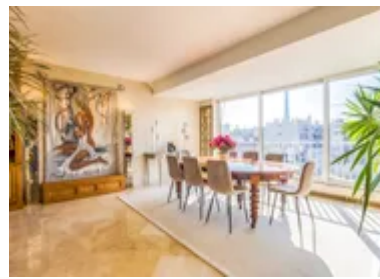
- Master Bedroom: King-size bed, ensuite bathroom, air conditioning, panoramic bubble bath, access to the terrace
- Office

### *Exterior*

- Rooftop terrace
- Outdoor seating
- Dining area
- Fully equipped summer kitchen

### **Additional Facilities**

- Wi-Fi
- Air conditioning (in the master bedroom only)
- TV
- Video projector
- Jacuzzi
- Fireplace





# Location & Local Information

Saint Pierre Penthouse is in the heart of one of the world's most enchanting holiday destinations—Paris, France. Located in the prestigious Trocadero-Pent House, this luxurious retreat enjoys an unrivalled position that promises an unforgettable vacation experience.

Perched atop this prestigious building, the penthouse offers unparalleled views of the iconic Eiffel Tower, a sight that defines the Parisian skyline. You'll find yourself surrounded by Paris's cultural and historical treasures, with world-famous landmarks, such as the Louvre Museum, Notre-Dame Cathedral, and the Champs-Élysées, just a short distance away.

Immerse yourself in the city's vibrant atmosphere as you stroll along the Seine River, savour gourmet delights in charming cafes, and explore the charming boutiques of the nearby Marais district. For art enthusiasts, the Musée d'Orsay and the Centre Pompidou are within easy reach, housing some of the world's most celebrated masterpieces.

Whether you're captivated by the romance of Paris, the culinary delights of its bistros, or the rich history that permeates its streets, the Saint Pierre Penthouse offers the perfect base for an exceptional holiday in the City of Lights. Its central location and breath-taking views make it the ultimate destination for those seeking a genuinely immersive Parisian experience.

## Local Amenities

Nearest Airport	Paris Charles de Gaulle Airport (31 km)
Nearest Train Station	Rue de la Pompe Underground Station (400 m)
Nearest Supermarket	Franprix (250 m)
Sightseeing	Trocadéro Square (650 m)



Sightseeing	Eiffel Tower (1.8 km)
Sightseeing	Musée d'Art Moderne de Paris (1.4 km)

---

## What we love

- Wake up to breath-taking vistas of the Eiffel Tower from the penthouse terrace every morning!
- The enchanting rooftop oasis is perfect for al fresco dining and magical evenings under the Parisian sky
- Explore Paris's famous landmarks, art, and cuisine from this prestigious holiday home's prime location

## What you should know...

- Access to the rooftop involves stairs, which may not be suitable for individuals with mobility issues
- The central location can sometimes be noisy, so be prepared for city sounds and traffic
- While the property is secure, exercising standard caution in a metropolitan area like Paris is essential

# Terms & Conditions

- **Security deposit:** Oliver's Travels to charge €10,000 to client's credit card before arrival and refunded two weeks after departure, subject to full site inspection.
- **Arrival time:** 18:00
- **Departure time:** 10:00
- **Energy costs included?:** Yes, included in the rental price.
- **Linen & towels included?:** Yes, included in the rental price.
- **Pets welcome?:** Not allowed.
- **Other Ts and Cs:** Please note that the air-conditioner is only available in the master bedroom.
- **End of stay cleaning available?:** Yes. However, guests are required to leave the accommodation clean, tidy and in the same condition as on their arrival. Any extra cleaning, laundry, maintenance and/or rubbish disposal required will be charged against the security deposit.
- **Smoking Allowed?:** Smoking & Vaping are not permitted.
- **Insurance:** Guests are required to be in possession of a valid insurance policy, which covers them for cancellations, loss of personal belongings, personal liability and any accidental damage caused during their stay.
- **Minimum stay:** 5 nights.
- **Heating costs included?:** Yes, included in the rental price.
- **Tax:** Paris city tax is €1.50 per person, per night. City tax is not included in the rental rate and is payable locally.
- **Internet access?:** Wi-Fi internet access included.