

Apartment du Praz

Region: 3 Valleys Sleeps: 5

Overview

Tucked away in the heart of the breathtaking Courchevel resort, Apartment du Praz offers an inviting escape in the French Alps. This warm and welcoming 53 m² apartment is the perfect retreat for up to two adults and three children, promising an unforgettable alpine experience.

One of Apartment du Praz's most enticing features is its prime location. Situated near the bustling centre of Courchevel le Praz, you'll find yourself within easy reach of charming shops and delectable restaurants. Moreover, the convenience of this location is further accentuated by the availability of a free shuttle service and modern lifts, ensuring that you can effortlessly access other levels of Courchevel, including the renowned Courchevel 1850, in less than six minutes.

As you step into Apartment du Praz, you'll discover a thoughtfully designed space that combines comfort and functionality. The accommodation boasts a double bedroom with an en-suite shower and a triple bedroom to accommodate your family or group of friends. The semi-open kitchen is fully equipped and efficient, making meal preparation a breeze. After a day on the slopes, the inviting lounge area beckons you to relax and unwind, while the adjacent dining area opens onto a serene terrace, allowing you to bask in the alpine tranquillity.

This apartment also offers the practicality of a separate bathroom and toilet, providing added convenience and privacy for all guests. To top it off, a dedicated ski locker ensures that your winter sports equipment is secure and readily accessible.

Courchevel le Praz, located on a vast plateau at an altitude of 1,300 meters, is a village resort that radiates a unique charm. This district of Courchevel is a testament to its dedication to preserving the mountain and Savoyard tradition.

Strolling through its streets, with traditional chalets and a quaint atmosphere, you'll truly experience a change of scenery. Here, tranquillity and authenticity reign, creating an idyllic backdrop for your alpine getaway.

Apartment du Praz in Courchevel is the epitome of a home away from home, promising comfort, convenience, and a warm, Savoyard atmosphere. Whether you're a skiing enthusiast, a lover of mountain traditions, or simply seeking a serene escape, this apartment is your key to unlocking the magic of the French Alps.



Facilities

Ski Lift Nearby • Bus/Shuttle To Slopes • Walk To Slopes • Ideal for Kids • Self-Catered • Walk to Village • Ski-In/Ski-Out • Skiing • Ideal for Teens • Great Value • Walk to Restaurant • Wi-Fi/Internet • Lakes and Mountains • Chalet Apartment • Outdoor Pursuit & Activities • TV • Dishwasher • Heating • Ideal for Babies & Toddlers

Interior & Grounds

The Apartment

Interior

- Living room
- Dining area
- Semi-open kitchen
- Bedroom 1: Double bed with ensuite shower room
- Bedroom 2: Bunk bed and single bed
- Bathroom

Exterior

- Balcony

Additional Facilities

- Wi-Fi
- TV
- Ski lockers
- Fridge
- Induction hob/oven
- Kitchen exhaust hood
- Dishwasher
- Washing machine



Location & Local Information

Apartment du Praz is perched in the heart of Courchevel, a renowned holiday destination in the French Alps. Located in the picturesque Courchevel le Praz, this inviting apartment provides an ideal base for an unforgettable alpine retreat.

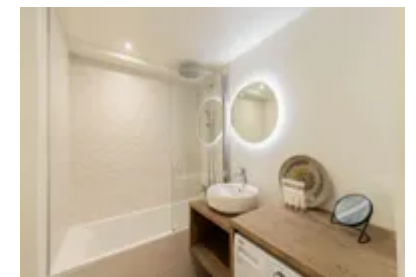
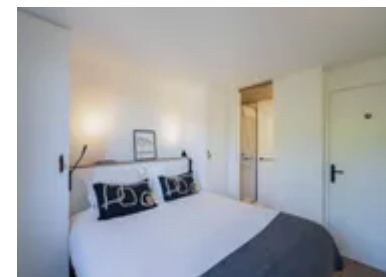
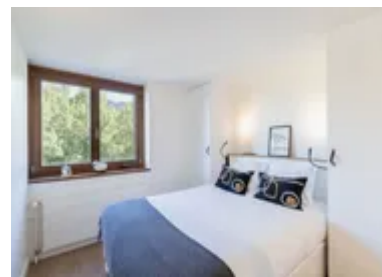
Courchevel is part of the world-famous "Les Trois Vallées" (The Three Valleys) ski area, the world's largest interconnected ski domain, encompassing over six hundred kilometres of pristine slopes. Apartment du Praz enjoys a privileged location with easy access to the area's ski facilities, including free shuttle services and state-of-the-art lifts that whisk you away to Courchevel 1850 in under six minutes.

This charming village resort is set at an altitude of 1,300 meters and exudes a unique, traditional Savoyard charm. The atmosphere is one of serene tranquillity and respect for the surrounding mountain landscape. Meandering through its narrow streets and admiring the rustic chalets, you'll be transported to a world that harmoniously blends the modern amenities of a top-tier ski destination with the authenticity of Alpine culture.

Apartment du Praz serves as a gateway to an array of winter activities, from skiing and snowboarding to exploring the local shops and restaurants. Whether you're a snow sports enthusiast or a nature lover, this location offers the perfect setting for a memorable holiday in the heart of the French Alps.

Local Amenities

Nearest Ski Lift	Télécabine Le Praz - Télésiège La Forêt (500 m)
Nearest Piste	Front de neige - Le Praz (200 m)
Nearest Ski Hire	Intersport (400 m)



Nearest Village	Courchevel 1300 - Le Praz (200 m)
Nearest Airport	Geneva (180 km)
Nearest Restaurant	Restaurant Le Bistrot du Praz (450 m)
Nearest Bar/Pub	Elephant Pizzeria (350 m)
Nearest Supermarket	8 A Huit (350 m)

What we love

- Apartment du Praz is ideally situated in the heart of Courchevel, granting swift access to the world's largest ski area.
- With a roomy and spacious floor plan, it's perfect for 2 adults and 3 children, offering ample space and a warm, inviting atmosphere.
- Immerse yourself in the authentic Alpine spirit of Courchevel le Praz with its traditional chalets and tranquil ambience.

What you should know...

- The property is located at an altitude of 1,300 meters, so guests should be mindful of potential altitude-related issues, such as altitude sickness.
- Extreme winter weather conditions can affect travel and accessibility, so stay updated on forecasts and plan accordingly.
- While the apartment has a ski locker, ensuring all guests have appropriate winter sports gear and understand the mountain's challenges is essential.

Terms & Conditions

- **Security deposit:** Secure link sent to the client's email to fill in the details of the client's bank card online 2 weeks before the arrival for the amount of €1500. Funds won't be taken or blocked on the credit card in this case.
- **Arrival time:** Check-in 5.00 PM.
- **Departure time:** Check-out 10.00 AM.
- **Energy costs included?:** Yes, included in the rental price.
- **Linen & towels included?:** Yes, included in the rental price.
- **Pets welcome?:** Not allowed.
- **Changeover day:** Sunday.
- **End of stay cleaning available?:** Yes. However, guests are required to leave the accommodation clean, tidy and in the same condition as on their arrival. Any extra cleaning, laundry, maintenance and/or garbage disposal required will be charged against the security deposit.
- **Smoking Allowed?:** Smoking & Vaping are not permitted.
- **Minimum stay:** 7 nights.
- **Heating costs included?:** Yes, included in the rental price.
- **Tax:** French Visitors Tax payable alongside balance (typically costs €1-€5 per adult per night- please enquire if exact amount is required).
- **Internet access?:** Yes, WIFI access included in the rental price.