

# Apartment Plan Fontaine

Region: 3 Valleys    Sleeps: 6

---

## Overview

Welcome to Apartment Plan Fontaine, an exceptional Alpine retreat in Courchevel's vibrant Plantret district. Perched on the first floor of the La Vanoise residence, this stylish haven offers a unique combination of modern comfort and traditional charm. Step out onto the living room balcony, and you'll be greeted by a breathtaking view of the Plantret ski slopes – a delightful reminder of the natural beauty that surrounds you.

As you enter the main living area, the warmth of the wooden decor envelopes you, evoking the comfortable ambience of a classic Alpine chalet. The living room beckons you to unwind, with sumptuous sofas and the option to immerse yourself in entertainment through satellite TV or a Netflix movie night. At the same time, the intimate dining space offers ample room for guests to enjoy delicious meals while taking in the mountain views.

Adjacent to the living area, the fully-equipped kitchen is a culinary haven. It boasts a kettle, electric coffee maker, Nespresso coffee maker, oven & microwave combination, and a toaster. Whether you're whipping up a hearty breakfast before a day on the slopes or preparing a delicious dinner to savour with friends and family, you'll find everything you need here.

Apartment Plan Fontaine features two stylish and modern bedrooms, which have been thoughtfully designed to provide a peaceful night's rest. The decor exudes mountain charm, creating a tranquil sanctuary after a day of snow-filled adventure. A cosy mountain corner also ensures that even larger groups of up to six occupants can enjoy a comfortable stay.

In addition, a secure ski locker awaits guests at the apartment, ensuring your winter gear is always at hand and



keeping your living spaces dry and clutter-free. It's a thoughtful addition that reflects the meticulous design of this incredible apartment.

## Facilities

Skiing • Ski Lift Nearby • Walk To Slopes • Self-Catered • Ski-In/Ski-Out • Walking/Hiking Paths • Walk to Village • Ideal for Kids • Ideal for Teens • Modern • Walk to Restaurant • Wi-Fi/Internet • Lakes and Mountains • Chalet Apartment • Washing Machine • Outstanding Landscapes • Coffee Machine • Outdoor Pursuit & Activities • Hairdryer • Tourist Towns & Villages • Dishwasher • Smart TV • Heating

# Interior & Grounds

## The Apartment

### Interiors:

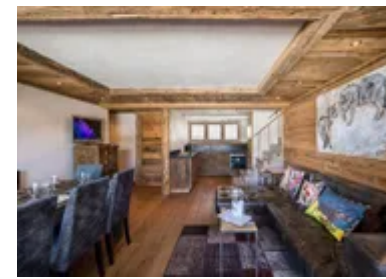
- Lounge space with sofa and TV
- Dining area with table and chairs
- Kitchen with combined oven/microwave, kettle, toaster, Nespresso coffee machine
- Bedroom (blind cabin) with bunk bed (90 x 190)
- Bedroom with double bed (160 x 190), TV and balcony
- Bedroom with double bed (160 x 190), TV, chest of drawers, balcony and ensuite bathroom with shower, basin, toilet, towel dryer and hairdryer
- WC
- Bathroom with bath, toilet and towel dryer

### Outdoor spaces:

- Furnished balcony with mountain views

### Additional facilities:

- WiFi
- Netflix
- Ski locker



## Location & Local Information

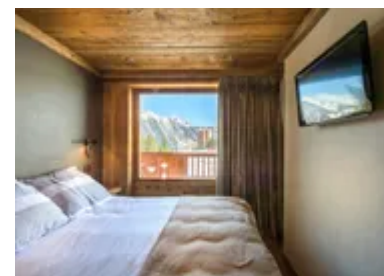
Apartment Plan Fontaine, located in Courchevel 1850, is perfectly positioned to offer guests an exceptional winter vacation experience. Courchevel 1850 is the highest and most prestigious of the four villages that make up the renowned Courchevel ski resort in the French Alps. This prime location is in the heart of this bustling and vibrant winter paradise.

The village of Courchevel 1850 is renowned for its world-class skiing and winter sports, attracting enthusiasts from around the globe. The apartment's immediate proximity to the slopes ensures you can start your skiing adventure almost immediately from your doorstep. From gentle slopes for beginners to challenging runs for seasoned skiers, Courchevel 1850 offers diverse options for every skill level.

Beyond the skiing, Courchevel 1850 boasts a wealth of activities and attractions for visitors to enjoy. The après-ski scene is legendary, with numerous bars and restaurants offering delightful cuisine and a lively atmosphere. Indulge in gourmet dining at Michelin-starred restaurants, experience the vibrant nightlife, or unwind in a cosy mountain lodge.

For those seeking relaxation or alternative adventures, the area offers many options. Explore the stunning Alpine scenery through snowshoeing, cross-country skiing, or hiking trails. The nearby Aquamotion is a state-of-the-art aquatic centre, perfect for a family day out with its pools, slides, and spa facilities. If you want a touch of culture, you can visit art galleries and exhibitions showcasing local and international talent. Courchevel 1850 also caters to the luxurious traveller, with high-end shopping boutiques where you can find the latest ski gear and fashionable attire. Moreover, the resort's amenities include wellness centres, ice-skating rinks, and even a cinema for your entertainment.

## Local Amenities



Nearest Airport	<b>Geneva Airport (171 km)</b>
Nearest Piste	<b>Front de Neige (200 m)</b>
Nearest Ski Lift	<b>Front de Neige (220 m)</b>
Nearest Ski Hire	<b>Skiset Ski Service Chamois (350m)</b>
Nearest Supermarket	<b>Sherpa Courchevel 1850 (240m)</b>
Nearest Restaurant	<b>La Mangeoire (350m)</b>
Nearest Bar/Pub	<b>Le Bar de Madame (850m)</b>
Nearest Village	<b>Courchevel 1850 (440m)</b>

## What we love

- We loved the charming and cosy interior of Apartment Plan Fontaine
- It was beautiful to be located just a couple of hundred metres from the village centre and the ski slopes
- The ski locker was a handy addition for storing our equipment during our stay

## What you should know...

- The 'blind' cabin bedroom with bunk beds doesn't have windows
- Only one of the two double bedrooms has an ensuite bathroom
- The apartment features a balcony with mountain views

# Terms & Conditions

- **Security deposit:** Secure link sent to the client's email to fill in the details of the client's bank card online 2 weeks before the arrival for the amount of €2500. Funds won't be taken or blocked on the credit card in this case.
- **Arrival time:** Check-in 5.00 PM.
- **Departure time:** Check-out 10.00 AM.
- **Energy costs included?:** Yes, included in the rental price.
- **Linen & towels included?:** Yes, included in the rental price.
- **Pets welcome?:** Not allowed.
- **Changeover day:** Saturday.
- **End of stay cleaning available?:** Yes. However, guests are required to leave the accommodation clean, tidy and in the same condition as on their arrival. Any extra cleaning, laundry, maintenance and/or garbage disposal required will be charged against the security deposit.
- **Smoking Allowed?:** Smoking & Vaping are not permitted.
- **Minimum stay:** 7 nights.
- **Heating costs included?:** Yes, included in the rental price.
- **Tax:** French Visitors Tax payable alongside balance (typically costs €1-€5 per adult per night- please enquire if exact amount is required).
- **Internet access?:** Wi-Fi internet access included.