

Chalet Stable

Region: 3 Valleys Sleeps: 12

Overview

Tucked away in the charming Saint-Martin-de-Belleville, the Chalet Stable stands as a true gem in the heart of the Béranger region, just five kilometres from the bustling centre of Saint-Martin de Belleville. Its prime location is an invitation to embrace the breathtaking mountain landscapes and immerse yourself in the serene embrace of nature.

Chalet Stable's marriage of traditional alpine architecture and contemporary design sets it apart. This intriguing juxtaposition of rustic charm and modern sophistication weaves a unique personality into the property, making it a distinctive haven for your mountain getaway. The interior plays with a vibrant palette of colours, infusing life and character into every nook and cranny.

One can't help but be captivated by the abundant natural light that streams through the numerous windows, bathing the living spaces in a warm, inviting glow. As the day unfolds, each room within the chalet reveals a spectacular panorama of the surrounding landscape, making it a pleasure to bask in nature's beauty.

The chalet's west-facing terrace is an idyllic spot to soak in the marvels of Belleville Valley. Whether the first light of dawn casts a soft golden hue or the amber hues of a mountain sunset, every moment spent on this terrace promises to be a unique and unforgettable experience.

Chalet Stable's accommodation is as inviting as the shared spaces, offering six double bedrooms designed with the same architectural finesse. These thoughtfully designed rooms can comfortably accommodate up to twelve guests. Each room is a sanctuary of comfort where you can unwind after a day of adventure in the pristine outdoors.



In all its facets, Chalet Stable epitomises the quintessential alpine escape, promising a harmonious blend of natural beauty, modern luxury, and authentic charm. It's an opportunity to revel in the mountains, embrace the valley's tranquillity, and relish your fellow travellers' company in an idyllic setting. Your stay at Chalet Stable is more than just a vacation; it's a chance to create cherished memories in one of the most enchanting corners of the French Alps.

Facilities

Wi-Fi/Internet • Bus/Shuttle To Slopes • Lakes and Mountains • Washing Machine • Ski Chalet • Hairdryer • Ideal for Xmas/NY • Self-Catered • Skiing • Walking/Hiking Paths • Games Room • DVD • Indoor Games • Cots (Cribs) • Modern • Ideal for Babies & Toddlers • Ideal for Kids • Ideal for Teens • Tumble Dryer • Dishwasher • Microwave • Smart TV • Home Cinema • Working Fireplace/Woodburner • Heating • High Chair(s) • Parking Space • Outstanding Landscapes • Outdoor Pursuit & Activities • Tourist Towns & Villages

Interior & Grounds

The Chalet

Interiors:

Ground Floor

- Entrance
- Garage
- Changing room
- Ski room
- Living room with TV
- Table tennis room

First Floor

- Open plan living room with fireplace
- Dining area
- Open kitchen
- Bedroom 1: Double bed, closet
- Bedroom 2: Double bed, closet
- Bedroom 3: Twin beds, closet and ensuite bathroom
- Bedroom 4: Twin beds, closet and ensuite bathroom
- WC
- Bathroom
- Living room
- Bedroom 5: Double bed, fireplace and ensuite bathroom
- Master Bedroom: Double bed, fireplace, ensuite bathroom and balcony

Exterior

- Balcony
- Terrace

Additional Facilities:



- Wi-Fi
- Netflix
- X-Box
- Ski locker
- Shoe warmers
- Garage
- Board games
- Baby cot
- Fondue and raclette machine

Location & Local Information

Chalet Stable is nestled in the picturesque Saint-Martin-de-Belleville and offers a truly captivating holiday destination. Situated in the quaint hamlet of Béranger, just a short five-kilometre drive from the vibrant heart of Saint-Martin de Belleville, this location is a haven for those seeking an alpine escape.

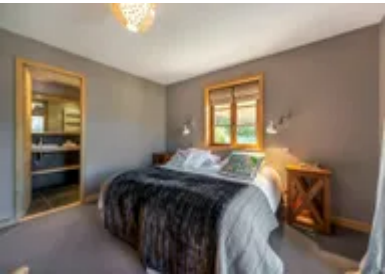
Saint-Martin-de-Belleville is a charming Savoyard village that retains its authentic French Alpine character. It's a gateway to the renowned Trois Vallées ski area, boasting a vast network of slopes for all skill levels. Winter enthusiasts can relish world-class skiing and snowboarding while enjoying the crisp mountain air.

During the summer months, this area transforms into a hiker's paradise. The surrounding natural beauty is a canvas of lush meadows, alpine flowers, and pristine forests, offering numerous hiking and biking trails to explore. The tranquillity and fresh mountain air create an ideal environment for relaxation and rejuvenation.

Chalet Stable's location affords guests the best of both worlds: easy access to the amenities and dining options of Saint-Martin-de-Belleville while providing a peaceful retreat to unwind. The west-facing terrace grants breathtaking views of the Belleville Valley, an ever-changing panorama to accompany your holiday moments. Whether you seek adventure or relaxation, Chalet Stable's location ensures a memorable holiday experience in the heart of the French Alps.

Local Amenities

Nearest Airport	Geneva Airport (183km)
Nearest Village	Saint Martin de Bellevue (4km)
Nearest Piste	Biolley (4.5km)



Nearest Ski Lift	Télécabine Saint Martin 1 (4.5km)
Nearest Ski Hire	Skiset Togosports (4.5km)
Nearest Restaurant	Le Montagnard (3.9km)
Nearest Bar/Pub	Pourquoi Pas (4km)
Nearest Supermarket	Huit à huit (4km)
Nearest Airport	Geneva Airport (183km)
Nearest Village	Saint Martin de Bellevue (4km)
Nearest Piste	Biolley (4.5km)
Nearest Ski Lift	Télécabine Saint Martin 1 (4.5km)
Nearest Ski Hire	Skiset Togosports (4.5km)
Nearest Restaurant	Le Montagnard (3.9km)
Nearest Bar/Pub	Pourquoi Pas (4km)
Nearest Supermarket	Huit à huit (4km)

What we love

- Chalet Stable offers an ideal blend of traditional alpine charm and contemporary design, creating a unique and inviting atmosphere.
- The west-facing terrace provides spectacular views of the Belleville Valley, making every moment extraordinary.
- Just a short drive from Saint-Martin-de-Belleville, you can access both village amenities and the tranquility of your mountain retreat.

What you should know...

- Be cautious of steep terrain around the chalet; watching your step is essential, especially in winter.
- The mountainous location can bring unpredictable weather, so guests should be prepared for changing conditions during their stay.
- The Chalet is located 4km from the village centre, so a car is recommended.

Terms & Conditions

- **Security deposit:** Secure link sent to the client's email to fill in the details of the client's bank card online 2 weeks before the arrival for the amount of €4000. Funds won't be taken or blocked on the credit card in this case.
- **Arrival time:** Check-in 5.00 PM.
- **Departure time:** Check-out 10.00 AM.
- **Energy costs included?:** Yes, included in the rental price.
- **Linen & towels included?:** Yes, included in the rental price.
- **Pets welcome?:** Not allowed.
- **Changeover day:** Saturday.
- **End of stay cleaning available?:** Yes. However, guests are required to leave the accommodation clean, tidy and in the same condition as on their arrival. Any extra cleaning, laundry, maintenance and/or garbage disposal required will be charged against the security deposit.
- **Smoking Allowed?:** Smoking & Vaping are not permitted.
- **Minimum stay:** 7 nights.
- **Heating costs included?:** Yes, included in the rental price.
- **Tax:** French Visitors Tax payable alongside balance (typically costs €1-€5 per adult per night- please enquire if exact amount is required).
- **Internet access?:** Wi-Fi internet access included.