

Apartment Alpine Lodge

Region: 3 Valleys Sleeps: 7

Overview

Apartment Alpine Lodge is a stylish top-floor retreat that combines the warmth of a chalet with the comfort of a modern apartment. Set in Courchevel Village, it offers direct ski-in/ski-out access beside the Grangettes gondola and sweeping views of the surrounding peaks.

The interiors are thoughtfully designed with natural wood, stone, and soft textiles, creating a chic yet cosy atmosphere. The living area is the heart of the home, where high ceilings and a traditional fireplace set the stage for relaxing evenings. An adjoining dining space and independent kitchen make it easy to gather, cook, and enjoy meals while admiring the mountain panorama.

The lodge comfortably accommodates families and groups with two inviting double bedrooms, one with an ensuite, plus a charming children's room with two single beds. A separate bathroom adds extra convenience. Every detail reflects alpine character, blending rustic touches with modern comfort.

Beyond the apartment, the location couldn't be better. The slopes are on your doorstep, while Courchevel Village's shops and restaurants are just a short stroll away. From here, the vast Three Valleys ski area awaits, offering endless opportunities to explore Courchevel, Méribel, and Val Thorens.

After an exhilarating day, guests can unwind at Aquamotion, the resort's impressive water and wellness centre, or simply relax by the fire. With its combination of authentic style, prime location, and easy access to world-class skiing, Apartment Alpine Lodge promises an unforgettable alpine escape.



Facilities

Skiing • Ski Lift Nearby • Boot Heaters • Walk To Slopes • Ideal for Xmas/NY • Self-Catered • Ski-In/Ski-Out • Walking/Hiking Paths • Walk to Village • Ideal for Kids • Recommended • Ideal for Teens • Maid Service Available • Modern • Parking Space • Walk to Restaurant • Wi-Fi/Internet • Lakes and Mountains • Chalet Apartment • Washing Machine • Outstanding Landscapes • Coffee Machine • Outdoor Pursuit & Activities • Hairdryer • Tourist Towns & Villages • TV • Tumble Dryer • Dishwasher • Microwave • Working Fireplace/Woodburner • Heating • Ski Locker • Bathroom Toiletries • High Chair(s)

Interior & Grounds

The Apartment

Interior

- Entrance
- Ski room with boot heaters
- WC
- Open-plan living room
- Dining area
- Open kitchen
- Bedroom 1: With a double bed, ensuite shower room and balcony
- Bedroom 2: With a double bed
- Bedroom 3: with a single bed and mezzanine sleeping area
- Bathroom with bathtub and washing machine

Exterior

- Terrace

Additional Facilities

- Wi-Fi
- TV
- Elevator
- Parking space



Location & Local Information

Apartment Alpine Lodge is ideally situated in Courchevel Village, offering an exceptional holiday destination for those seeking an unforgettable Alpine experience. Nestled within the heart of the world-renowned Three Valleys ski domain, this location is a winter wonderland for skiing and snowboarding enthusiasts.

The property's ski-in/ski-out convenience provides instant access to the pristine slopes, making it an idyllic choice for winter sports aficionados. The nearby Grangettes gondola opens up a world of alpine adventure, allowing you to easily explore the vast Courchevel ski area.

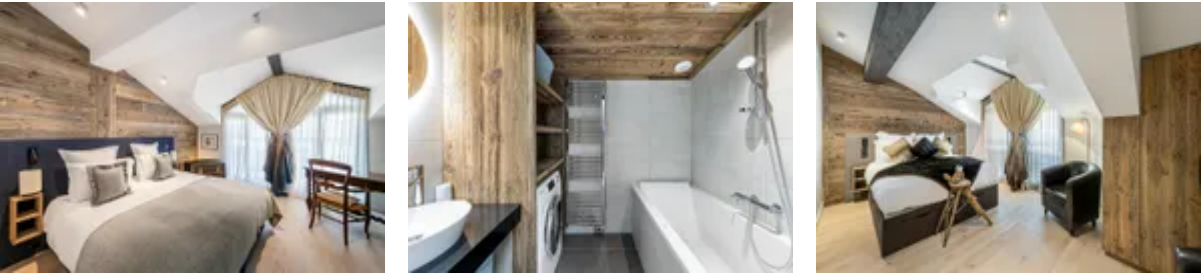
Beyond the thrill of the mountains, Apartment Alpine Lodge is just a short 150-meter walk from the charming boutiques and delectable restaurants of Courchevel Village. This proximity to the vibrant village life ensures that you can seamlessly balance outdoor adventure with the warmth of après-ski hospitality.

Moreover, Courchevel's new aquatic centre, Aquamotion, is within easy reach, offering a perfect retreat for relaxation and rejuvenation after an exhilarating day on the slopes.

In summary, Apartment Alpine Lodge's location presents an unparalleled holiday destination, combining the allure of alpine sports with the convenience of village amenities, ensuring an enchanting stay for all seasons.

Local Amenities

Nearest Airport	Chambéry (103 km)
Nearest Airport	Geneva (137 km)
Nearest Bar/Pub	Le Catérail (80 m)
Nearest Piste	Grangettes/Tovets (100 m)



Nearest Restaurant	Le Caveau (150 m)
Nearest Restaurant	La Corto (180 m)
Nearest Shop	Combe des Saveurs (50 m)
Nearest Ski Hire	INTERSPORT - Courchevel Village (25 m)
Nearest Ski Lift	Grangettes (130 m)
Nearest Supermarket	Proxi Supermarket (85 m)
Nearest Village	Courchevel 1550 (270m)

What we love

- The ski-in/ski-out location, right facing the Grangettes gondola, makes hitting the slopes effortless.
- Two double bedrooms (one ensuite) plus a children's mezzanine room with two single beds is ideal for families or groups.
- Use of natural, high-quality materials such as wood, stone cladding, woollen textiles give a cosy yet elegant alpine feel.

What you should know...

- While the mezzanine bedroom is perfect for younger travellers, the stairs up to the mezzanine level are quite steep and care should be taken when getting into and out of bed
- This property is considered ski-in/ski-out, but be aware the lifts are located a short walk away.
- Courchevel Village (1550) is quieter and more laid-back than the glamorous 1850, making it ideal for families and those seeking a calmer base.

Terms & Conditions

- **Security deposit:** Secure link sent to the client's email to fill in the details of the client's bank card online 2 weeks before the arrival for the amount of €3000. Funds won't be taken or blocked on the credit card in this case.
- **Arrival time:** 5.00 PM.
- **Departure time:** 10.00 AM.
- **Energy costs included?:** Yes, included in the rental price.
- **Linen & towels included?:** Yes, included in the rental price.
- **Pets welcome?:** Not allowed.
- **Other Ts and Cs:** Please note that a highchair is available for an extra cost. Highchair: 30€ per week
- **Changeover day:** Saturday.
- **End of stay cleaning available?:** Yes, included in the rental price. However, guests are required to leave the accommodation clean, tidy and in the same condition as on their arrival. Any extra cleaning, laundry, maintenance and/or garbage disposal required will be charged against the security deposit.
- **Smoking Allowed?:** Smoking & Vaping are not permitted.
- **Minimum stay:** 7 nights.
- **Heating costs included?:** Yes, included in the rental price.
- **Tax:** French Visitors Tax payable alongside balance (typically costs €1-€5 per adult per night). Please enquire if exact amount is required.
- **Internet access?:** Wi-Fi internet access included.