

Apartment Gelée

Region: 3 Valleys Sleeps: 10

Overview

Step into the lap of alpine luxury with Apartment Gelee in Courchevel, a five-bedroom, two-storey apartment designed to accommodate up to ten guests. As you enter, the spacious interior welcomes you, adorned with beamed ceilings and an abundance of wood, creating a warm and inviting atmosphere. The high-quality furnishings throughout the apartment add a touch of elegance to the Alpine charm.

The living area on the ground floor is a sanctuary of comfort, featuring a lounge space with a sprawling corner sofa, a flat-screen TV, and a fireplace where you can unwind after a day on the slopes. The adjacent dining area showcases a beautifully crafted wooden dining table and chairs, comfortably seating ten guests, while the kitchen is equipped with top-of-the-line appliances, including a central island, Fondue and Raclette machines, a kettle, Nespresso coffee maker, refrigerated wine cellar, and a freezer.

The ground floor also boasts a master bedroom with a comfortable double bed, a private balcony offering stunning views, and a TV for entertainment. This stylish room also benefits from an ensuite bathroom; a haven of relaxation with a luxurious whirlpool bath. A second double bedroom on this level also comes equipped with a TV and ensuite facilities, while an independent bathroom completes the amenities on the ground floor.

Moving to the first floor, you'll discover a double bedroom with its own TV, a balcony for soaking in the mountain air, and an ensuite bathroom. A children's room with bunk beds offers a playful space for the younger guests, while the final bedroom on this floor provides another comfortable double bed, TV, and ensuite bathroom.



This exceptional duplex also offers modern conveniences, such as an elevator for easy access between floors, a ski locker, shoe warmers, and a safe for your valuables. The multimedia options include Apple TV, foreign channels, a BOSE speaker, a Blu-ray player, satellite TV, and wireless connectivity. Additionally, outdoor furniture invites you to enjoy the breathtaking surroundings from the apartment's spacious balcony.

Elegance and comfort define Apartment Gelee, a quintessential Alpine chalet duplex that promises a holiday filled with luxury, relaxation, and breathtaking scenery. Nestled just 80 metres from the Jardin Alpin ski slope and its corresponding lift, this apartment's ideal location caters to avid skiers and nature enthusiasts, ensuring a memorable mountain retreat.

Facilities

Wi-Fi/Internet • Ski Lift Nearby • Walk To Slopes • Lakes and Mountains • Washing Machine • Coffee Machine • Hairdryer • Ideal for Xmas/NY • Self-Catered • Skiing • Ski-In/Ski-Out • TV • Cots (Cribs) • DVD • Lift • Walk to Village • Chalet Apartment • Bathroom Toiletries • Ideal for Kids • Ideal for Teens • Walk to Restaurant • Dishwasher • Microwave • Safety Deposit Box • Smart TV • Wine Cellar • Working Fireplace/Woodburner • Heating • High Chair(s) • Parking Space • Outstanding Landscapes • Outdoor Pursuit & Activities • Tourist Towns & Villages

Interior & Grounds

The Apartment

Layout

Ground floor

- Lounge space with corner sofa, armchairs, footstools, fireplace and TV
- Dining area with table and chairs for 10 guests
- Fully-equipped kitchen with a central island, fondue appliance raclette machine, kettle, Nespresso coffee maker, refrigerated wine cellar, and freezer
- Bedroom with double bed (180 x 200), closet, TV, safe, balcony and ensuite bathroom with whirlpool bathtub, shower, double basin, toilet, hairdryer and towel dryer
- Bedroom with double bed (160 x 200), cupboard, TV and ensuite bathroom with shower, basin, toilet, hairdryer and towel dryer
- Bathroom with shower and toilet
- WC

First floor

- Bedroom with double bed (180 x 200), closet, TV, balcony and ensuite bathroom with shower, basin, toilet, hairdryer, towel dryer
- Bedroom with bunk bed (90 x 190), closet
- Bedroom with double bed (160 x 200), cupboard, TV and ensuite bathroom with whirlpool bath, shower, double basin, toilet, hairdryer, towel dryer

Outdoor spaces

- Furnished balcony
- Parking Space

Additional facilities

- WiFi
- Elevator
- Ski locker
- Shoe warmer
- Apple TV
- BOSE speaker
- Blu-ray player



- Satellite TV
- Cot and highchair (available upon request)
- Safe
- Wood Fireplace
- Microwave
- Fridge
- Freezer
- Raclette machine
- Fondue appliance
- Nespresso coffee machine
- Kitchen exhaust hood
- Kettle
- Toaster
- Refrigerated wine cellar
- Induction hobs
- Dishwasher
- Washing machine
- Oven

Location & Local Information

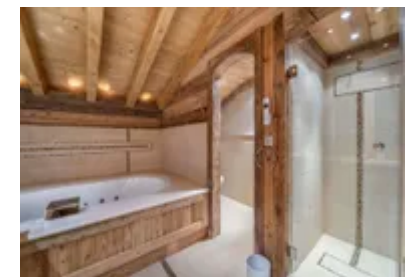
Nestled in the heart of the French Alps, Apartment Gelee in Courchevel beckons guests to an idyllic setting that perfectly marries luxury with nature. Situated just 80 metres from the Jardin Alpin ski slope and its accompanying lift, this alpine retreat offers a prime location for ski enthusiasts eager to hit the slopes steps away from their doorstep.

Courchevel (1850), renowned for its opulent charm, has evolved into a haven for discerning travellers seeking the epitome of luxury. The apartment's strategic distance of 1000 metres from the town centre provides a tranquil escape while ensuring convenient access to the vibrant atmosphere and high-end amenities that define Courchevel's allure. Amidst the rapid development of 4 and 5-star hotels, palaces, and exclusive boutiques, Courchevel (1850) has solidified its status as a premier destination.

The immediate proximity of the Jardin Alpin lift grants guests seamless access to the expansive network of slopes, with the nearest slope again conveniently located at the Jardin Alpin. The ski school, essential for both beginners and those seeking to refine their skills, is within a reasonable distance of 1000 metres, offering a well-rounded experience for all levels of skiers.

What sets Courchevel apart is not just its snow-covered landscapes. The resort's success is underscored by a commitment to exceptional services, an array of Michelin-starred restaurants, and a collection of 17 5-star hotels and 3 palaces—testaments to the dedication to excellence that has attracted a discerning international clientele.

For those with a penchant for a chic and family-friendly ambience, the Jardin Alpin neighbourhood emerges as a preferred enclave. Here, guests of Apartment Gelee can relish in the sublime combination of proximity to the slopes, a charming atmosphere, and easy access to the



resort's vibrant centre, making it an ideal choice for an unforgettable alpine getaway.

Local Amenities

Nearest Airport	Geneva (189 km)
Nearest Piste	Jardin Alpin (80 m)
Nearest Ski Lift	Jardin Alpin Lift (80 m)
Nearest Ski Hire	Sport 2000 (1 km)
Nearest Restaurant	Le Tremplin (1 km)
Nearest Bar/Pub	Au planté de bâton (1 km)
Nearest Supermarket	Carrefour (1.4 km)
Nearest Village	Courchevel 1850 (1000 m)
Nearest Train Station	Moûtiers - Salins - Brides-Les-Bains (25.6 km)

What we love

- The unparalleled luxury and spacious layout of Apartment Gelee makes it a fantastic accommodation choice for larger groups or two or more families holidaying together
- The apartment's proximity to the slopes and lifts are a huge plus for avid skiers
- We loved the luxurious touches, such as the ensuite bathroom with whirlpool baths and multimedia options

What you should know...

- A ski locker is provided to store your equipment and to ensure that your living spaces remain dry and uncluttered
- The apartment's bedrooms are situated over two levels
- A cot and highchair are available on request for the youngest guests

Terms & Conditions

- **Security deposit:** €5000 paid via bank transfer to the owner 30 days before arrival and refunded two weeks after departure, subject to full inspection.
- **Arrival time:** Check-in 5.00 PM.
- **Departure time:** Check-out 10.00 AM.
- **Energy costs included?:** Yes, included in the rental price.
- **Linen & towels included?:** Yes, included in the rental price.
- **Pets welcome?:** Not allowed.
- **Changeover day:** Saturday.
- **End of stay cleaning available?:** Yes. However, guests are required to leave the accommodation clean, tidy and in the same condition as on their arrival. Any extra cleaning, laundry, maintenance and/or garbage disposal required will be charged against the security deposit.
- **Smoking Allowed?:** Smoking & Vaping are not permitted.
- **Minimum stay:** 7 nights.
- **Heating costs included?:** Yes, included in the rental price.
- **Tax:** French Visitors Tax payable alongside balance (typically costs €1-€5 per adult per night- please enquire if exact amount is required).
- **Internet access?:** Wi-Fi internet access included.