

Apartment Poppy

Region: 3 Valleys Sleeps: 8

Overview

Located within the stunning Chantemerle residence in Courchevel Moriond, Chalet 203 epitomises modern Alpine luxury with a touch of warmth and sophistication. The apartment's stylish decor welcomes you with a rich blend of natural elements and contemporary design. As you step inside, warm wood cladding creates a cosy atmosphere, contrasting elegantly with sumptuous black leather sofas that beckon you to relax after a day on the slopes. At the same time, splashes of russet, orange, and chocolate brown in the rugs and cushions add vibrancy and character to the space.

The heart of the chalet is its open-plan living area under the rustic roof, encompassing a spacious lounge complete with a wall-mounted, flatscreen TV for your entertainment and a well-appointed kitchen - which is fully equipped with high-end appliances, such as a coffee machine, blender, dishwasher, and more, allowing you to prepare delightful meals with ease. The apartment's dining area comfortably accommodates up to 8 guests, perfect for family gatherings or meals with friends. The ample seating encourages socialising, with Sonos speakers providing the soundtrack to your evenings.

Apartment Poppy boasts four double/twin en suite bedrooms, each impeccably furnished with the finest linens and tasteful decor. Two well-appointed bathrooms provide guests with luxurious facilities to unwind in style after a day on the slopes. For your convenience and comfort, the apartment offers numerous amenities, including a garage, a ski locker, and a boot heater to ensure your gear is always ready for the next adventure and allow you to keep your living spaces dry and clutter-free. You can also stay connected with WiFi, and, as an added bonus, the residence provides a parking space for your vehicle. Should you be travelling



with little ones, baby cots and high chairs are available on request to ensure a family-friendly stay and help you pack lighter for your trip.

Facilities

Ski Lift Nearby • Walk To Slopes • Self-Catered • Skiing • Ski-In/Ski-Out • Ideal for Kids • Walking/Hiking Paths • Walk to Village • Ideal for Teens • Cots (Cribs) • Modern • Walk to Restaurant • Wi-Fi/Internet • Lakes and Mountains • Chalet Apartment • Washing Machine • Coffee Machine • Outstanding Landscapes • Hairdryer • Outdoor Pursuit & Activities • Tourist Towns & Villages • TV • Garage • Tumble Dryer • Microwave • Heating • High Chair(s)

Interior & Grounds

The Apartment

Interior:

Ground floor

- Lounge space with sofas and TV
- Dining area with table and seating for up to 8 guests
- Fully equipped kitchen with integrated ovens, grill-stone, coffee machine, blender, toaster, kettle, fridge/freezer and dishwasher
- Balcony access
- Bedroom with double bed (180 x 200)
- Bedroom with double bed that can be converted into two singles (140 x 190)
- Bedroom with bathtub, double basin, hairdryer and towel dryer
- WC

Mezzanine level

- Bedroom with double bed (180 x 200) and TV
- Bedroom with two single beds (90 x 200)
- Bathroom with shower, double basin, toilet, weighing scales, hairdryer, towel dryer, washing machine and dryer
- WC

Outdoor spaces

- Balcony
- Garage parking

Additional Facilities

- Cot and highchair (available on request)
- Boots heater
- Ski locker
- WiFi
- SONOS speaker



Location & Local Information

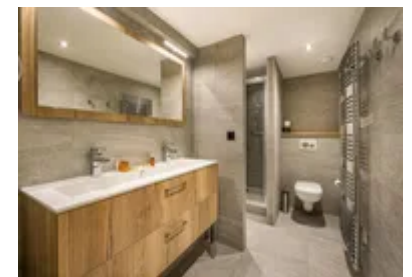
Nestled in the heart of Courchevel Moriond 1650, Apartment Poppy enjoys a prime location that perfectly captures the essence of this vibrant alpine village. Renowned as the sunniest village in the valley, Courchevel Moriond offers a dynamic and family-friendly environment, making it a sought-after destination for skiing enthusiasts and those seeking a charming mountain getaway.

The apartment's proximity to the main street, a mere 100m away, means you have easy access to a delightful array of bars, restaurants, and shops. This is where you can sample the local cuisine, explore boutique stores, and soak in the lively atmosphere of this charming mountain town. For skiing aficionados, the apartment's location is a dream come true. Just 150m away, you'll find the ski lift, which whisks you up to the stunning alpine slopes, while the Front de Neige, also known as the Snow Front, is a stone's throw away, offering a convenient starting point for your skiing adventures.

Suppose you're travelling with family or new to the sport. In that case, the Piou Piou club, located right at the Snow Front, provides a wonderful place for children to learn and have fun under the watchful guidance of experienced instructors. The village also hosts ski schools, ensuring that everyone can enjoy the slopes to the fullest. The Aquamotion aquatic centre is a must-visit destination for a different kind of winter adventure. Just a short distance from the apartment, it offers an array of activities and relaxation opportunities for visitors of all ages, from thrilling water slides to serene spa facilities.

Apartment Poppy's location in Courchevel Moriond 1650 places you in the heart of the action, surrounded by ski facilities and attractions catering to outdoor enthusiasts and those seeking a leisurely mountain retreat. It's the perfect base to embrace the beauty and excitement of the French Alps.

Local Amenities



Nearest Airport	Geneva Airport (184km)
Nearest Village	Courchevel 1650 (260m)
Nearest Piste	Front de Neige (150m)
Nearest Ski Lift	Ariondaz (150m)
Nearest Ski Hire	INTERSPORT - COURCHEVEL 1650 (120m)
Nearest Restaurant	Copiña Courchevel (400m)
Nearest Bar/Pub	Schuss Café (260m)
Nearest Supermarket	SPAR (350m)

What we love

- We loved the cosy, modern interior of Apartment Poppy
- The apartment's spacious balcony is a wonderful spot for enjoying the views with a morning cuppa or after-dinner drinks
- It was wonderful to be so close to the village centre and all it has to offer in the way of restaurants, shops and attractions

What you should know...

- One of the double beds in the apartment can be converted into two singles as desired
- The double bedroom on the mezzanine level features a TV for your entertainment
- A cot and highchair are available on request for the youngest guests

Terms & Conditions

- **Security deposit:** Secure link sent to the client's email to fill in the details of the client's bank card online 2 weeks before the arrival for the amount of €1500. Funds won't be taken or blocked on the credit card in this case.
- **Arrival time:** Check-in 5.00 PM.
- **Departure time:** Check-out 10.00 AM.
- **Energy costs included?:** Yes, included in the rental price.
- **Linen & towels included?:** Yes, included in the rental price.
- **Pets welcome?:** Not allowed.
- **Changeover day:** Saturday.
- **End of stay cleaning available?:** Yes. However, guests are required to leave the accommodation clean, tidy and in the same condition as on their arrival. Any extra cleaning, laundry, maintenance and/or garbage disposal required will be charged against the security deposit.
- **Smoking Allowed?:** Smoking & Vaping are not permitted.
- **Minimum stay:** 7 nights.
- **Heating costs included?:** Yes, included in the rental price.
- **Tax:** French Visitors Tax payable alongside balance (typically costs €1-€5 per adult per night- please enquire if exact amount is required).
- **Internet access?:** Wi-Fi internet access included.