

# Apartment Carre

Region: 3 Valleys    Sleeps: 6

---

## Overview

Apartment Carre offers a stylish alpine escape in the heart of Courchevel 1550, around 100 metres from the Grangettes Lift and village centre. Perched on the fifth floor of the sought-after Carré Blanc residence, this modern 88 sqm apartment blends warm mountain character with sleek, contemporary design.

Inside, the open-plan living and dining area welcomes guests with soft, natural tones, wooden finishes and large windows opening onto a furnished terrace with sweeping views over Courchevel Village and the Vanoise peaks. The adjoining kitchen is fully equipped with everything needed for easy self-catering, including an oven, hob, dishwasher, microwave, and both Nespresso and filter coffee machines, plus raclette and fondue sets for cosy evenings in.

The apartment comfortably sleeps six guests across three double bedrooms, each of which can be prepared as twin beds on request. One bedroom has an en-suite bathroom, while a further bathroom and separate WC serve the remaining rooms. Guests also enjoy private underground parking, a ski locker and lift access directly to the apartment.

After a day on the slopes, unwind in the residence's shared wellness area with a sauna and treatment room (payable locally) or make use of the on-site fitness room. Apartment Carre combines comfort, convenience and understated alpine style in a location ideal for families or friends eager to experience Courchevel's charm both on and off the slopes.



## Facilities

Ski Lift Nearby • Mountain View • Walk To Slopes • Self-Catered • Skiing  
• Ski-In/Ski-Out • Walk to Village • Walking/Hiking Paths • Cots (Cribs) •  
Ideal for Teens • Modern • Walk to Restaurant • Parking Space • Wi-  
Fi/Internet • Lakes and Mountains • Chalet Apartment • Outstanding  
Landscapes • Coffee Machine • Hairdryer • Outdoor Pursuit & Activities •  
Tourist Towns & Villages • Lift • Gym/Fitness Room • Dishwasher •  
Microwave • Smart TV • Sauna/Steam • Heating • Ski Locker • Bathroom  
Toiletries • Ideal for Babies & Toddlers • High Chair(s)

# Interior & Grounds

## The Apartment (88sqm)

### Interiors

- Open-plan living area
- Dining area with seating for six
- Fully equipped kitchen
- Bedroom 1: Double bed (180 x 200cm, can be separated into twins), balcony access, TV, en-suite bathroom with bathtub, basin, WC, towel dryer and hairdryer
- Bedroom 2: Double bed (180 x 200cm, can be separated into twins), balcony access, TV
- Bedroom 3: Double bed (180 x 200cm, can be separated into twins), balcony access, TV
- Bathroom with bath, basin, WC and towel dryer
- Separate WC

### Outdoor spaces

- Furnished terrace with mountain and village views
- Bedroom balconies
- Two underground parking spaces

### Additional Facilities:

- Wi-Fi
- Central heating
- Elevator access
- Private ski locker
- Iron and vacuum cleaner
- Hairdryer
- Cot and highchair (available on request, subject to extra charge)
- Shared residence wellness area with sauna, gym and treatment room

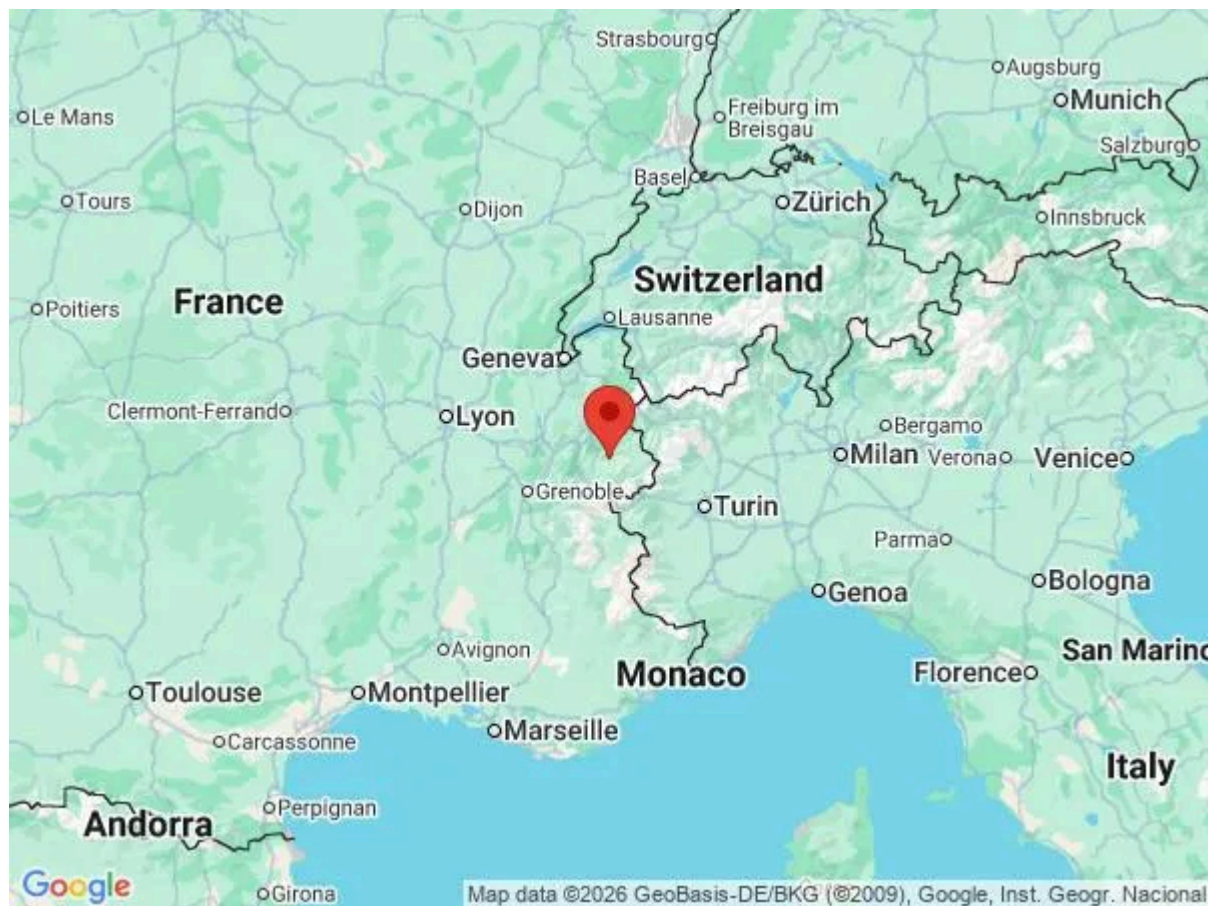


## Location & Local Information

Apartment Carre enjoys a prime position in Courchevel 1550, offering effortless access to the lifts, slopes and village life. The Grangettes gondola sits just 100 metres away, linking directly to Courchevel 1850 and the wider Three Valleys ski area—one of the largest and most varied domains in the world. The nearest piste, Proveres, is only steps from the residence, so you can be on the snow within minutes each morning.

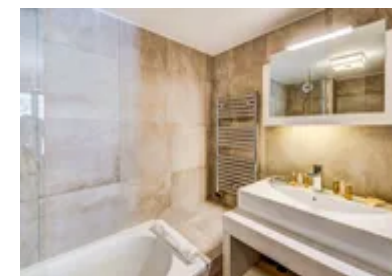
Courchevel Village has a relaxed, family-friendly atmosphere yet remains well connected to the resort's premium facilities. Restaurants, bars, ski hire shops and the tourist office are all within easy walking distance, while the Aquamotion centre, complete with pools, spa and water slides is just down the road, perfect for unwinding or entertaining children off the slopes.

Set amid classic alpine scenery, Courchevel 1550 combines authenticity with convenience. You'll find everything from cosy cafés and bakeries to gourmet dining nearby, with ski schools and nursery areas close at hand. Apartment Carre's location makes it an excellent base for guests who want the best of both worlds: peaceful mountain living with quick access to Courchevel's world-class skiing and après-ski scene.



## Local Amenities

Nearest Airport	<b>Geneva</b> (129 km)
Nearest Airport	<b>Lyon</b> (184 km)
Nearest Bar/Pub	<b>Les Perles du Palais</b> (110 m)
Nearest Piste	<b>Tovets</b> (20m)
Nearest Restaurant	<b>La Chapelle 1550</b> (140 m)



Nearest Ski Hire	<b>Intersport - Courchevel Village</b> (20 m)
Nearest Ski Lift	<b>Roys (Button Lift, access to Grangettes)</b> (20 m)
Nearest Ski Lift	<b>Grangettes (Short walk)</b> (100 m)
Nearest Supermarket	<b>Proxi Supermarché</b> (150 m)
Nearest Village	<b>Courchevel Village</b> (50 m)

---

## What we love

- Apartment Carre is only 20m from the Roys button lift, and 100 metres from the Grangettes chair lift and easy access to Courchevel 1850
- The apartment's terrace offers stunning alpine views
- The private underground parking and ski locker included make for an easy and stress free stay

## What you should know...

- The double beds in the apartment can be separated into singles on request
- Please note that the gym, sauna and treatment room are part of the shared residence facilities
- A cot and highchair are available on request for the youngest guests subject to an extra charge
- The property is close to the slopes but not technically ski-in/ski-out, with a road inbetween the piste and residence.

# Terms & Conditions

- **Security deposit:** Secure link sent to the client's email to fill in the details of the client's bank card online 2 weeks before the arrival for the amount of €4000. This is in the form of a card authorisation, funds are not cashed
- **Arrival time:** Check-in 5.00 PM.
- **Departure time:** Check-out 10.00 AM.
- **Energy costs included?:** Yes, included in the rental price.
- **Linen & towels included?:** Yes, included in the rental price.
- **Pets welcome?:** Not allowed.
- **Other Ts and Cs:** Please note that rental of a cot and highchair is at an extra cost paid directly to the owner: Cot: 40€ per week Highchair: 30€ per week
- **Changeover day:** Saturday.
- **End of stay cleaning available?:** Yes, included in the rental price included a mid-stay clean. However, guests are required to leave the accommodation clean, tidy and in the same condition as on their arrival. Any extra cleaning, laundry, maintenance and/or garbage disposal required will be charged against the security deposit.
- **Smoking Allowed?:** Smoking & Vaping are not permitted.
- **Minimum stay:** 7 nights.
- **Heating costs included?:** Yes, included in the rental price.
- **Tax:** French Visitors Tax payable alongside balance (typically costs €1-€5 per adult per night- please enquire if exact amount is required).
- **Internet access?:** Wi-Fi internet access included.