

Casa Palacete

Region: Portimao **Sleeps:** 12

Overview

Embark on a journey of luxury and sophistication at Casa Palacete, a radiant jewel nestled in the vibrant heart of Portimão. This five-bedroom villa beckons you into a world where art and design seamlessly merge, creating an ever-evolving haven that captivates the senses.

As you step into this modern masterpiece, you're greeted by pristine white walls, floors, and ceilings, a minimalist backdrop that transforms the villa into a blank canvas awaiting your holiday memories. Adorning this pristine space are the vibrant works of Dutch artist Meinke Flesseman, each stroke of colour enhancing the atmosphere and turning the villa into a living, breathing art exhibition.

With a total of five bathrooms, Casa Palacete guarantees privacy and comfort for every guest. Begin your day with a refreshing shower or indulge in a leisurely soak in the standalone tubs, immersing yourself in tranquillity and luxury. The villa's well-equipped kitchen invites culinary exploration, ensuring that every meal is a delight, while the cosy living area provides the perfect setting for relaxation, with modern furnishings and artistic accents that create an ambience of warmth and sophistication.

Casa Palacete comprises three distinct spaces to accommodate your needs. Apartment 1 boasts two ensuite king-size bedrooms, offering a private retreat for up to four guests. Apartment 2 features two king-size bedrooms with bathtubs, a bathroom with shower and toilet, and an additional separate toilet. The Annex, a standalone structure, offers a private ensuite double bedroom, and a double bedroom completing the ensemble of spaces that make up Casa Palacete and accommodating a total of twelve guests.



Immerse yourself in the city view from the terrace, savouring the prime location that grants easy access to Portimão's bustling activities and attractions. Dive into local culture, explore nearby shops, indulge in the local cuisine at various eateries, or take a leisurely stroll along the picturesque coastline.

Casa Palacete is not just a villa; it's an invitation to experience the epitome of holiday living, where art, design, and comfort converge to create an unforgettable escape in the heart of Portimão.

Facilities

Air-Con • Recommended • Wine Tasting • Wi-Fi/Internet • TV • Hairdryer • Washing Machine • Walking/Hiking Paths • Coffee Machine • Cots (Cribs) • Laptop Friendly Workspace • Walk to Village • Instagrammable • Modern • Townhouse/Apartment • Ideal for Kids • Ideal for Teens • Walk to Restaurant • <1hr to Airport • Dishwasher • Microwave • All Bedrooms En-Suite • High Chair(s) • Fenced Grounds • Outstanding Landscapes • Outdoor Pursuit & Activities • Tourist Towns & Villages

Interior & Grounds

Layout

Apartment 1

- Lounge space with sofa, chairs and flatscreen TV
- Dining room with table and chairs
- Fully equipped kitchen with table and chairs to seat two guests, oven, hob, kettle, microwave and Nespresso coffee machine
- Bedroom with king-size bed and ensuite bathroom
- Bedroom with king-size bed and ensuite bathroom
- Bedroom with king-size bed and ensuite bathroom

Apartment 2

- Lounge space with sofa and fireplace
- Dining room with table and chairs
- Fully equipped kitchen with oven, hob, kettle, microwave and Nespresso coffee machine
- Bedroom with king-size bed and bathtub
- Bedroom with king-size bed and bathtub
- Bathroom with shower and toilet
- WC

Annexe

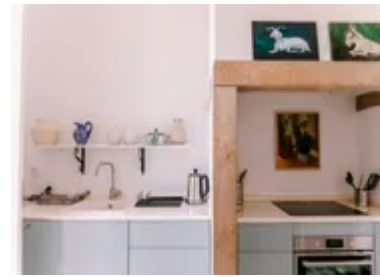
- Bedroom with double bed and ensuite bathroom

Outdoor spaces

- Terraces with tables, chairs and lounge furniture

Additional facilities

- WiFi
- Air conditioning
- Baby cot and highchair
- Dishwasher
- Hair dryer
- Ironing facilities



Location & Local Information

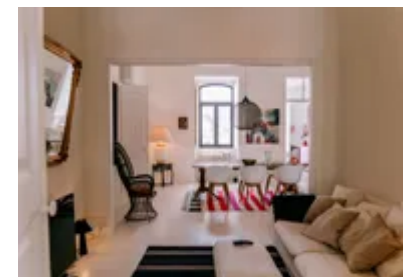
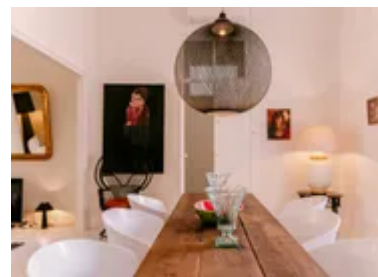
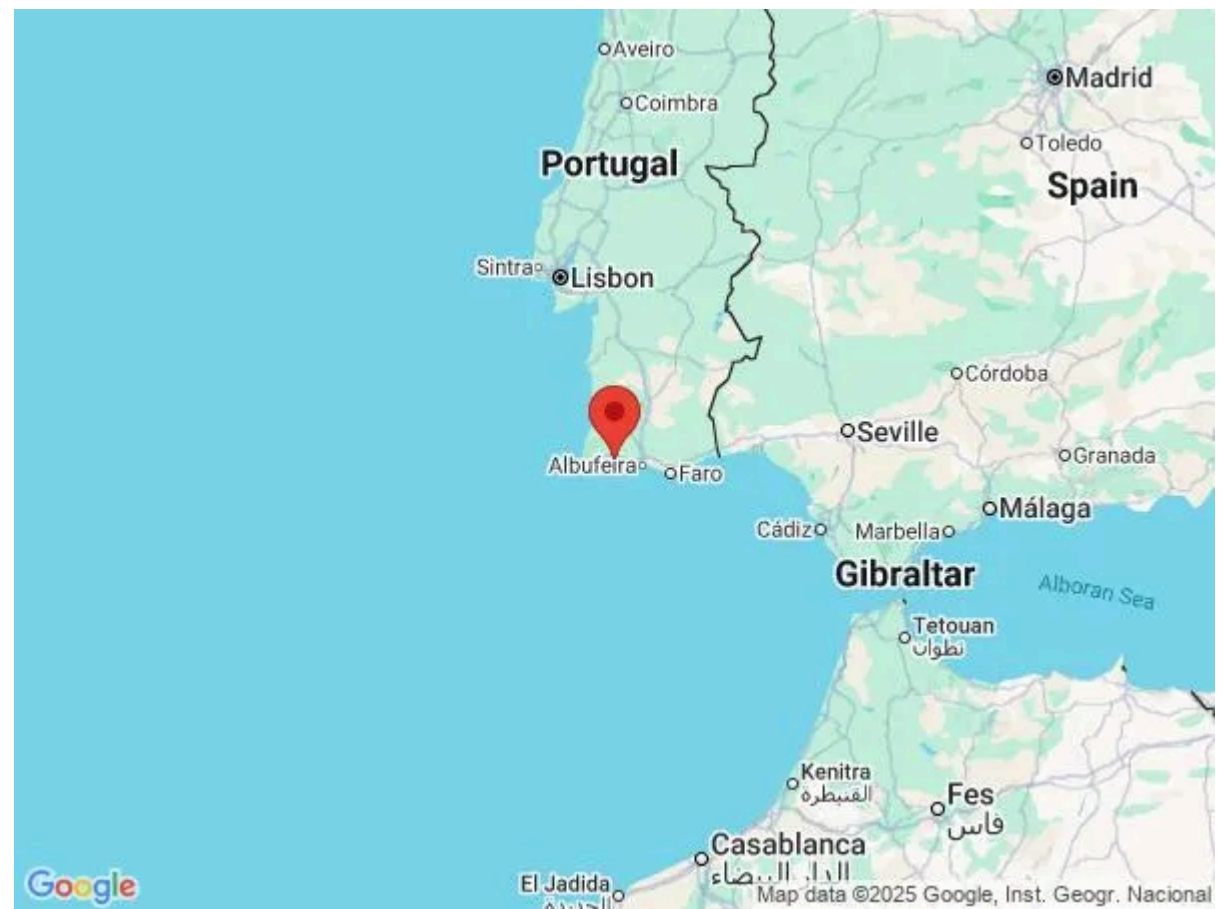
Nestled in the estuary of the River Arade, Casa Palacete graces the enchanting city of Portimão, a destination celebrated for its pristine sandy beaches and warm, tranquil waters, beckoning holidaymakers to a captivating retreat. Portimão, steeped in a rich fishing tradition that burgeoned in the 19th and 20th centuries, unfolds its history through architectural treasures within the historic centre. The streets and squares bear witness to this era, with structures like the award-winning Portimão Museum housed in a meticulously restored cannery, honouring a city that has thrived exclusively by and for the sea.

Explore the simply styled Chapel of São José de Alcalar or marvel at the imposing Church of Nossa Senhora da Conceição, a 15th-century gem atop a hill, standing proudly in the city's skyline. As you meander through the city, find respite in the shade of Manuel Bivar Garden or stroll along the lively Marina promenade, where fishing boats and pleasure craft paint a picturesque scene.

After taking in the sights, indulge your taste buds in one of the many waterfront restaurants, where the renowned grilled sardines take centre stage. Portimão's culinary delights include an array of fish and seafood specialities, from clams to bouillabaisse, creating a gastronomic haven for enthusiasts.

Venture 3 kilometres from the city centre to Praia da Rocha, the Algarve's most famous beach, boasting an expansive swath of sand that has graced postcards worldwide since the early 20th century. This bustling seaside resort is complemented by a casino and a plethora of leisure activities, standing witness to its strategic importance in the 15th century.

The Praia da Rocha Fortress, perched atop the beach, provides a panoramic view of the city, river, and sea, especially enchanting in the evening light of the setting sun. Beyond Praia da Rocha, discover a sequence of beaches, each framed by rugged rocks that enhance the coastal landscape. Embark on a boat trip along the coast



to unveil hidden beaches and admire striking rock formations, or ascend the River Arade estuary to Silves, encountering green hills and diverse landscapes etched into memory. Whether you're a history enthusiast, a culinary connoisseur, or a nature lover, Portimão's allure, complemented by the exquisite Casa Palacete, promises an unforgettable holiday experience.

Local Amenities

Nearest Airport	Faro Airport (67 km)
Nearest Town/City	Portimao (1 km)
Nearest Restaurant	Restaurante Barlavento (73 m)
Nearest Bar/Pub	Boogie Bar (3 km)
Nearest Supermarket	Mini Market (300 m)
Nearest Beach	Praia dos Três Castelos (4 km)
Nearest Golf	Alto Golf (5 km)

What we love

- We loved the eclectic and artistic layout and design of Casa Palacete
- Two separate apartments and a standalone annexe made this villa ideal for larger groups, affording everyone their own space and privacy when required
- The spacious sun terrace was a wonderful spot for sitting and soaking up the atmosphere with a morning cuppa or after-dinner drink

What you should know...

- Two of the bedrooms have bathtubs within the room
- A cot and highchair are available for the youngest guests
- The villa features WiFi and air conditioning for your comfort

Terms & Conditions

- **Security deposit:** €500 charged to the client's credit card as a pre-authorisation at least 2 weeks prior to arrival and refunded two weeks after departure, subject to a full inspection.
- **Arrival time:** 4 pm
- **Departure time:** 10 am
- **Energy costs included?:** Yes, included in the rental price.
- **Linen & towels included?:** Yes, included in the rental price.
- **Pets welcome?:** Not allowed.
- **Other Ts and Cs:** The local property manager will send you a registration form to be completed, with all travellers/guests details, before your arrival date. Please ensure this form is completed at least one week before your arrival in resort.
- **Changeover day:** Flexible
- **End of stay cleaning available?:** Extra €235, paid to Oliver's Travels. However, guests are required to leave the accommodation clean, tidy and in the same condition as on their arrival. Any extra cleaning, laundry, maintenance and/or garbage disposal required will be charged against the security deposit.
- **Smoking Allowed?:** Smoking & Vaping are not permitted.
- **Minimum stay:** 7 nights. All other durations on request.
- **Heating costs included?:** Not included, please inquire.
- **Tax:** Tourist Tax of €2 per person per night for over 13's (max. 7 nights) is not included in the rental price and will need to be paid prior arrival via a link direct from the supplier. Please note that this amount is only applicable for bookings from 01/04 to 31/10. The tax will lower to €1 for bookings from 01/11 to 31/03.
- **Internet access?:** Wi-Fi internet access included.