

Hertford Street Residences

Region: London Sleeps: 4

Overview

Hertford Street Residence has been beautifully renovated within the heart of London's vibrant cityscape, encapsulating the perfect blend of elegance and modernity. This refined accommodation, situated within the esteemed COMO Metropolitan London, offers an unparalleled experience where every contemporary comfort seamlessly intertwines with the essence of home.

Step into a realm of understated luxury where sophistication meets comfort. Hertford Street Residence exudes a timeless charm with its elegant yet contemporary style, creating an inviting ambience that resonates with guests from the moment they arrive. The accommodation is not mere rooms; it offers expansive living spaces thoughtfully designed to cater to the desires of the discerning traveller.

What sets this residence apart is the exclusive access to a private terrace, offering an oasis of tranquillity amidst the bustling cityscape. From this vantage point, guests can relish enchanting views of the serene courtyard and the charming neighbourhood, a true escape from the urban clamour.

The generous living space within Hertford Street Residence beckons guests to unwind and relax. These carefully curated spaces are ideal for hosting intimate gatherings or simply lounging with loved ones. The fully equipped kitchen enhances the sense of homeliness, allowing guests to indulge in culinary pursuits at their leisure.

Stepping outside, a shared private courtyard offers a serene enclave where one can retreat, sip a cup of tea, or bask in the soothing atmosphere. Additionally, guests are granted access to the COMO Shambhala Urban Escape



and gym, an oasis of holistic wellness.

Seamless connectivity is another hallmark of these accommodations, as hotelwide Wi-Fi access ensures that guests can remain connected to the digital realm at their convenience. The embodiment of comfort is further elevated with 24-hour room service, offering a taste of luxury whenever desired.

In essence, Hertford Street Residence redefines the concept of luxury living. The apartment is not merely a place to rest but a sanctuary where the comforts of a world-class hotel seamlessly blend with the familiarity of home. Whether you're seeking a peaceful retreat or a base to explore the city, these residences offer an unrivalled experience that lingers long after your stay.

Facilities

Laptop Friendly Workspace • Wi-Fi/Internet • Wow Factor • Easy By Train
• Walk to Village • Romantic • City Homes & Apartments • Kid-friendly
museum • Kid-friendly excursions • No car required • Ideal for Babies &
Toddlers • Ideal for Kids • Ideal for Teens • Pets on Request • Walk to
Restaurant • <1hr to Airport • Dishwasher • Microwave • Coffee Machine
• Satellite TV • TV • Heating • Outstanding Landscapes • Tourist Towns &
Villages • Historical Sites

Interior & Grounds

The Apartment

Interior

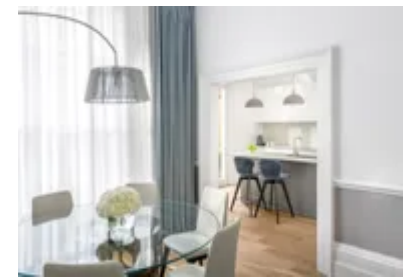
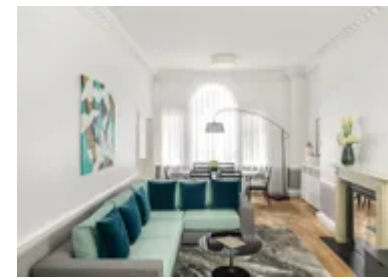
- Open-plan living room
- Fully equipped kitchen
- Dining area for six guests
- Master bedroom: King-size bed with ensuite
- Bedroom 2: King-size bed
- Bathroom

Exterior

- Shared private courtyard

Additional Facilities

- Wi-Fi
- In-room massage therapies
- Access to COMO Shambhala Urban Escape and gym
- Loewe TV with on-demand music and over 70 channels of entertainment
- 24 hour room service
- Laundry, dry cleaning and pressing services
- Express check-in and check-out



Location & Local Information

Hertford Street Residence is strategically nestled in the heart of London, one of the world's most iconic cities teeming with rich history, culture, and bustling urban life. This prime location offers holidaymakers an advantageous starting point to explore the myriad wonders of the British capital. The residence is mere steps away from Hyde Park's and Green Park's verdant expanses, offering a natural respite amidst the city's hustle.

Close proximity to the upscale shopping districts of Mayfair and the gastronomic delights of Shepherd Market ensures an eclectic mix of luxury and local experiences. London's illustrious landmarks, including Buckingham Palace and the West End, are easily accessible, promising diverse cultural engagements. Well-connected by public transport, visitors at Hertford Street Residence can conveniently journey through London, unlocking its many secrets, from world-class museums to historic streets and theatres.

Its location offers both the serenity of parks and the vibrancy of urban London, making it an impeccable holiday destination for those seeking a comprehensive London experience.

Local Amenities

Nearest Airport	Heathrow Airport (24 km)
Nearest Town/City	Mayfair
Nearest Train Station	Hyde Park Corner Underground Station (450 m)
Nearest Supermarket	Tesco Express (400 m)
Nearest Restaurant	El Pirata of Mayfair (130 m)
Nearest Bar/Pub	Revery Bar (77 m)



Sightseeing	Buckingham Palace (850 m)
-------------	-------------------------------------

What we love

- Nestled steps away from Hyde Park, this holiday home immerses you in the heart of London's iconic attractions.
- Enjoy upscale shopping in Mayfair and culinary delights just moments from your doorstep.
- Well-connected to public transport, effortlessly uncovers London's treasures, from historic landmarks to cultural gems.

What you should know...

- The central location brings city sounds, which might be noticeable for light sleepers.
- Street parking can be challenging; consider public transport options when staying.
- Proximity to popular attractions means busy streets at times; plan accordingly for a vibrant atmosphere.

Terms & Conditions

- **Arrival time:** 4:00 p.m.
- **Departure time:** 10:00 a.m.
- **Energy costs included?:** Yes, included in the rental price.
- **Linen & towels included?:** Yes, included and changed every other day.
- **Pets welcome?:** Small pets (up to 6kg). Cleaning fee applicable at £50 per stay. Please enquire during the booking process.
- **Other Ts and Cs:** Please note that a 50% deposit at the time of booking is needed.
- **End of stay cleaning available?:** Yes. However, guests are required to leave the accommodation clean, tidy and in the same condition as on their arrival. Any extra cleaning, laundry, maintenance and/or rubbish disposal required will be charged against the security deposit.
- **Smoking Allowed?:** Smoking & Vaping are not permitted.
- **Minimum stay:** Minimum, stay is at 3 nights. During high season, the minimum stay is at 10 nights.
- **Heating costs included?:** Yes, included in the rental price.
- **Internet access?:** Wi-Fi internet access included.