

Apartment Frai

Region: 3 Valleys Sleeps: 11

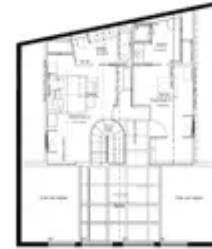
Overview

Apartment Frai offers a bright and well designed base in the centre of Courchevel Village, giving guests immediate access to the slopes and the convenience of a modern residence. Set across 185 square metres and arranged over two floors, the apartment comfortably sleeps up to eleven people in five bedrooms, making it a strong option for families or mixed groups seeking a practical and comfortable space with straightforward access to the Three Valleys.

The main living area sits on the ground floor and provides a warm and relaxed setting after time on the mountain. Large windows draw in natural light and the combination of pale wood, stone and soft furnishings creates a low key Alpine atmosphere. There is plenty of seating, a dining area for group meals and a fully equipped kitchen with quality appliances including ceramic hobs, a dishwasher and fondue equipment. A glass floor above the living area forms part of the upper level and adds a distinctive architectural detail.

Four double bedrooms come with en suite facilities and the children's room features three single beds with its own bathroom, giving each guest practical comfort and privacy. Two furnished terraces extend the living space outdoors, one of which is a south facing twenty five square metre terrace with open views across Courchevel.

Guests also benefit from two indoor parking spaces and access to the residence's shared wellness area with a fitness room, sauna and hammam. Treatments are available at the spa for an additional charge. Skis and equipment can be stored in the private ski locker, and the Grangettes lift and Proveres piste are only moments away, allowing very quick access onto the mountain each day.



Facilities

Ski-In/Ski-Out • Ski Lift Nearby • Ski School Nearby • Walk To Slopes • Self-Catered • Skiing • Walking/Hiking Paths • Walk to Village • Ideal for Kids • Cots (Cribs) • Ideal for Teens • All Bedrooms En-Suite • Modern • Walk to Restaurant • Parking Space • Wi-Fi/Internet • Lakes and Mountains • Chalet Apartment • Outstanding Landscapes • Coffee Machine • Outdoor Pursuit & Activities • Tourist Towns & Villages • TV • Lift • Garage • Gym/Fitness Room • Dishwasher • Microwave • Sauna/Steam • Heating • Ski Locker • Bathroom Toiletries • Ideal for Babies & Toddlers • High Chair(s)

Interior & Grounds

The Apartment

Interiors:

Ground floor

- Living room with sofas, armchairs, TV and access to terrace
- Dining area with seating for the full group
- Fully equipped kitchen with oven, ceramic hobs, fridge, dishwasher, fondue appliance and bleached wood cabinetry
- Bedroom 1: Double bed (180 x 200), wardrobe, TV, balcony and en suite bathroom with bathtub and toilet.
- Bedroom 2: Two single beds (90 x 200) that can be converted into a double, wardrobe, TV and en suite bathroom with shower and toilet
- Bedroom 3: Double bed (180 x 200), wardrobe, safe, TV, balcony and en suite bathroom with shower
- Independent WC

First floor

- Bedroom 4: Double bed (180 x 200), wardrobe and en suite bathroom with bathtub and toilet
- Bedroom 5: Three single beds (90 x 200) suitable for children, en suite bathroom with shower, basin, toilet and towel dryer
- Glass floor feature creating a reading nook and overlooking the living area

Outdoor spaces

- Two furnished terraces with south facing terrace with mountain views
- Private ski locker
- Two indoor parking spaces

Additional Facilities:

- Wi-Fi
- Elevator
- Iron and ironing board
- Cot and high chair available on request
- Safe
- Central heating
- Access to shared wellness area including fitness room, sauna and hammam



Location & Local Information

Apartment Frais is set in a prime position in the heart of Courchevel Village, placing guests close to everything they need for a straightforward ski holiday. The Grangettes lift sits only a short walk from the residence, giving fast access to Courchevel 1850 and the wider Three Valleys. The Proveres piste is also close by, which makes getting on and off the snow each day particularly smooth for skiers of all levels. Ski school meeting points are within easy reach, a useful advantage for beginners or anyone looking to develop their confidence with professional guidance.

Courchevel Village offers a friendly atmosphere with a choice of shops, cafés and restaurants within walking distance. It is an easy place to settle into a weekly routine, whether that involves picking up fresh supplies, relaxing with a drink after skiing or trying local Savoyard dishes. The area links quickly into the full Courchevel network, opening up a broad range of terrain from gentle blue runs to more challenging routes higher up the mountain. With its central setting and straightforward access to the lifts, Apartment Frais works well for guests who want direct and uncomplicated entry to the slopes each day.

Local Amenities

Nearest Airport	Geneva (133 km)
Nearest Airport	Lyon (184 km)
Nearest Bar/Pub	Les Perles du Palais (110 m)
Nearest Piste	Tovets (20 m)
Nearest Restaurant	La Chapelle 1550 (140 m)
Nearest Ski Hire	Intersport - Courchevel Village (200 m)



Nearest Ski Lift	Roys (Button Lift, access to Grangettes) (20 m)
Nearest Ski Lift	Grangettes (100 m)
Nearest Supermarket	Carrefour Montagne (1.7km)
Nearest Village	Courchevel Village 1550 (0 m)

What we love

- Apartment Frais' bright interiors with a practical duplex layout suited to families and groups
- The location was perfect for getting on the slopes in the morning and enjoying the restaurants and shops of Courchevel Village
- The whole family enjoyed making use of the residence's wellness facilities, which include a sauna and a fitness room

What you should know...

- The twin bedroom have single beds that can be converted into a double as desired, and the childrens room with 3 single beds is best suited to younger guests owing to its layout
- While the property is a short walk to the pistes, it is not strictly ski-in/ski-out.
- The apartment spans two floors which requires stair use for some of the bedrooms and may not be suitable for guests with mobility issues
- Noise levels may be higher during peak weeks due to the central setting of Apartment Frais

Terms & Conditions

- **Security deposit:** Secure link sent to the client's email to fill in the details of the client's bank card online 2 weeks before the arrival for the amount of €4000. This is in the form of a card authorisation, funds are not cashed
- **Arrival time:** Check-in 5.00 PM.
- **Departure time:** Check-out 10.00 AM.
- **Energy costs included?:** Yes, included in the rental price.
- **Linen & towels included?:** Yes, included in the rental price.
- **Pets welcome?:** Not allowed.
- **Other Ts and Cs:** Please note that rental of a cot and highchair is at an extra cost paid directly to the owner: Cot: 40€ per week Highchair: 30€ per week
- **Changeover day:** Saturday.
- **End of stay cleaning available?:** Yes, included in the rental price included along with a mid-stay clean. However, guests are required to leave the accommodation clean, tidy and in the same condition as on their arrival. Any extra cleaning, laundry, maintenance and/or garbage disposal required will be charged against the security deposit.
- **Smoking Allowed?:** Smoking & Vaping are not permitted.
- **Minimum stay:** 7 nights.
- **Heating costs included?:** Yes, included in the rental price.
- **Tax:** French Visitors Tax payable alongside balance (typically costs €1-€5 per adult per night- please enquire if exact amount is required).
- **Internet access?:** Wi-Fi internet access included.