

# Apartment Montfrais

**Region:** Alpe d'Huez   **Sleeps:** 6

---

## Overview

**Apartment Montfrais** is a chic Alpine retreat designed for style, comfort and togetherness. Set on the first floor of the newly built Fermes de l'Alpe residence, this spacious four-room apartment welcomes up to six guests, offering a perfect balance of modern living and stunning mountain scenery.

Inside, a calming palette of soft creams, chocolate tones and natural wood creates a warm, elegant atmosphere. At its heart is a bright and inviting living area, complete with plush sofas, a television for cosy evenings in, and a dining table that brings everyone together over leisurely meals. Floor-to-ceiling windows flood the room with light and open out onto a private balcony, where the dramatic peaks of the Grandes Rousses massif provide an ever-changing backdrop. Morning coffees and evening aperitifs taste all the better with those sweeping Alpine views.

The sleek open-plan kitchen ensures foodies are well catered for, equipped with modern appliances and plenty of space to prepare anything from hearty breakfasts to indulgent dinners. Its sociable layout means chefs can stay connected with the chatter in the lounge and dining areas.

Sleeping arrangements are designed with families and small groups in mind. Two stylish double bedrooms are paired with a cosy cabin room featuring bunk beds a sure hit with younger guests. One double enjoys its own ensuite shower room, while the remaining rooms share a contemporary bathroom. Each bedroom continues the apartment's serene design, with soft furnishings and thoughtful touches that make relaxation effortless.

With its modern comforts, mountain views and welcoming feel, Apartment Montfrais is a delightful base for those



seeking a touch of Alpine elegance.

## Facilities

Ski-In/Ski-Out • Ski Lift Nearby • Walk To Slopes • Lakes and Mountains • Self-Catered • Skiing • Cycling • Wi-Fi/Internet • TV • Cots (Cribs) • Walk to Village • Maid Service Available • Great Value • Lift • Chalet Apartment • Ski Locker • Bathroom Toiletries • Ideal for Babies & Toddlers • Ideal for Kids • Ideal for Teens • Walk to Restaurant • Microwave • Heating • High Chair(s) • Parking Space • Outstanding Landscapes • Outdoor Pursuit & Activities • Tourist Towns & Villages

# Interior & Grounds

## The Apartment

### *Layout*

- Lounge space with sofas and TV
- Dining area with table and chairs
- Well-equipped kitchen
- Bedroom with double bed and en-suite bathroom with shower and basin
- Bedroom with double bed
- Cabin bedroom with bunk bed
- WC
- Bathroom with shower, basin and toilet

### *Outdoor spaces*

- Balcony

## Additional Facilities

- WIFI
- Microwave
- Oven
- Cot and highchair
- Elevator
- Ski locker
- Parking space
- Boot heaters
- Fridge
- Kitchen exhaust hood
- TV



# Location & Local Information

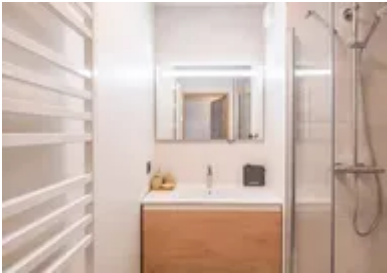
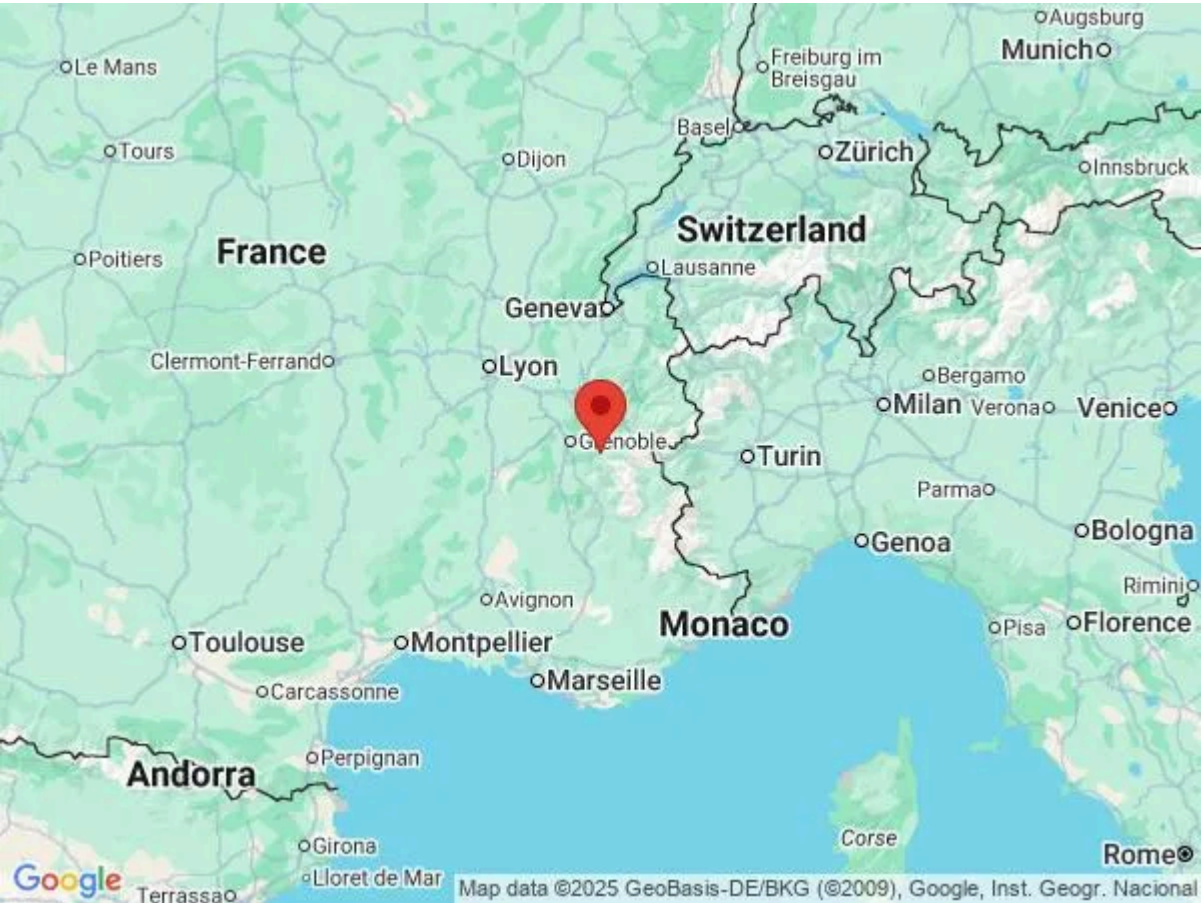
Set in the heart of Old Alpe, the Fermes de l'Alpe residence offers an authentic Alpine experience inspired by traditional Dauphinois barns. Its blend of mountain charm and modern comfort makes it the perfect base year-round.

In winter, the residence is just moments from shops and cable cars, giving direct access to one of France's largest ski areas. Linked with Auris-en-Oisans, Villard Reculas, Oz-en-Oisans and Vaujany, Alpe d'Huez guarantees snow and endless variety, from gentle green runs to challenging black slopes. With 111 pistes, fun family zones, a snowpark for freestyle fans and vast off-piste terrain, there's something for every skier.

Known as "The Island in the Sun," Alpe d'Huez also offers vibrant après-ski, lively nightlife and spectacular scenery. Come summer, the resort becomes an outdoor playground with crisp mountain air, scenic trails and a wealth of activities for all ages to enjoy.

## Local Amenities

Nearest Airport	Geneva (209 km)
Nearest Bar/Pub	Le QG (240 m)
Nearest Piste	Huez (200 m)
Nearest Restaurant	Le Strato (250 m)
Nearest Ski Hire	Sport 2000 (270 m)
Nearest Ski Lift	The Telecentre (200 m)
Nearest Supermarket	Sherpa (600 m)
Nearest Train Station	Gare de Lancey (80.5 km)



Nearest Village	L'alpe D'huez (400 m)
-----------------	--------------------------



## What we love

- We loved the spacious and stylish layout of Apartment Montfrais
- The balcony adds to the great layout watching the winter sun set over the mountains
- It was wonderful to be close to so many skiing opportunities - all right on our doorstep

## What you should know...

- The cabin bedroom is in the corner of the apartment with no windows or door. This area would be perfect for younger children during the family ski holiday
- While there is only 1 bedroom with ensuite facilities, there is still plenty of space for the rest of the group to use the other bathroom to get ready in the morning
- The resort centre is 900m from the apartment, and the closest ski slope is 200m away

# Terms & Conditions

- **Security deposit:** Secure link sent to the client's email to fill in the details of the client's bank card online 2 weeks before the arrival for the amount of €1000. Funds won't be taken or blocked on the credit card in this case.
- **Arrival time:** Check-in 5.00 PM.
- **Departure time:** Check-out 10.00 AM.
- **Energy costs included?:** Yes, included in the rental price.
- **Linen & towels included?:** Yes, included in the rental price.
- **Pets welcome?:** Not allowed.
- **Changeover day:** Saturday.
- **End of stay cleaning available?:** Yes. However, guests are required to leave the accommodation clean, tidy and in the same condition as on their arrival. Any extra cleaning, laundry, maintenance and/or garbage disposal required will be charged against the security deposit.
- **Smoking Allowed?:** Smoking & Vaping are not permitted.
- **Minimum stay:** 7 nights.
- **Heating costs included?:** Yes, included in the rental price.
- **Tax:** French Visitors Tax payable alongside balance (typically costs €1-€5 per adult per night- please enquire if exact amount is required).
- **Internet access?:** Wi-Fi internet access included.