

Apartment Horn

Region: KitzSki Sleeps: 5

Overview

Escape to the serene beauty of the Austrian Alps with a stay in Apartment Horn, a charming 3-room chalet that offers total comfort and relaxation. As you step inside, you'll be greeted by warm and tasteful furnishings and elegant decor that sets the stage for a delightful holiday experience.

The heart of this alpine retreat is the stylish lounge/diner, which is illuminated by natural light and features a modern white and grey colour palette with beamed ceilings for a rustic touch. Plump grey sofas offer a cosy space to relax after a day on the slopes, while a flatscreen satellite TV ensures you stay connected to the world if you wish. Adjacent is a delightful dining space, with a table and bench seating, and the open kitchen is well-equipped with a breakfast bar and stools, an oven, ceramic hob, kettle, and electric coffee machine, making meal preparation a breeze.

Apartment Horn's sleeping quarters are equally contemporary and elegant in design, featuring a double bedroom and a room with both a single and a double bed - perfect for families or groups of friends. Both rooms offer guests private, relaxing havens to enjoy during their stay, with sumptuous furnishings, stunning views and flatscreen TVs for your entertainment.

The icing on Apartment Horn's cake is the spacious, furnished terrace where guests can soak in the breathtaking mountain views while sipping a morning cuppa or relaxing with a glass of wine in the evening.

While you may never want to leave this delightful chalet, the Dorfresort Kitzbühel resort, where it is situated, offers a variety of amenities, including a natural swimming pond, sauna, steam room, hydro massage bath, infrared sauna,



and a relaxation room. There's even storage for bicycles and skis, ensuring you have everything you need for an unforgettable winter or summer break. Apartment Horn's central location in Reith bei Kitzbühel means you're within reach of supermarkets and restaurants. Whether you're here to hit the slopes or explore the beautiful lakes, you'll find it all nearby, so don't miss out on this opportunity to experience the best of the Austrian Alps in style and comfort.

Facilities

Wi-Fi/Internet • Cots (Cribs) • Spa/Massage • Walk to Village • Chalet Apartment • Wellness • Self-Catered • Ideal for Kids • Ideal for Teens • Pets on Request • Hot Tub • Walk to Restaurant • Dishwasher • Coffee Machine • Hairdryer • Satellite TV • Sauna/Steam • Heating • Parking Space • Skiing • Outstanding Landscapes • Outdoor Pursuit & Activities • Tourist Towns & Villages

Interior & Grounds

The Apartment

Layout

- Lounge space with sofa and satellite TV
- Dining area with table and chairs
- Open kitchen with oven, dishwasher, ceramic hob, kettle, and electric coffee machine
- Bedroom with double bed and TV
- Bedroom with double bed, single bed and TV
- Bathroom with shower, basin and toilet
- WC

Outdoor spaces

- Furnished balcony
- Parking

Additional facilities

- WiFi
- Baby cot
- Hairdryer
- Sauna
- Hot tub
- TV
- Balcony
- Dishwasher
- Oven
- Ceramic hobs
- Toaster
- Kettle



Location & Local Information

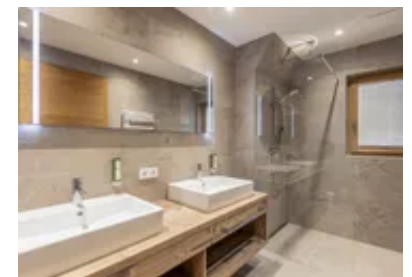
Nestled in the heart of the Austrian Alps, Apartment Horn in Reith bei Kitzbühel is your gateway to an unforgettable mountain escape. Kitzbühel, a name that resonates with travellers worldwide, is a renowned resort and a playground for the elite, attracting celebrities from around the globe. This famous and idyllic town is located 90 kilometres northeast of Innsbruck and effortlessly combines rustic charm with a touch of sophistication.

In Kitzbühel, the possibilities for leisure and entertainment are endless. The town is adorned with bars, discos, and even a casino for those seeking a little excitement. There's an indoor aquatic centre and sauna facilities for those searching for relaxation, offering rejuvenating health cures. And if that's not enough, there are more possibilities to explore, ensuring a diverse range of experiences for every visitor.

During the summer months, the region truly comes alive, with a picturesque bathing lake, a heated outdoor swimming pool, and well-maintained tennis courts. Golf enthusiasts will be delighted by the 18-hole golf course, while horseback riding, fishing, and paragliding are just a few other exciting activities. For the adventurous souls, the summer toboggan run in St. Johann, a short 10 kilometres away, provides a thrilling descent. With a total of 7 mountain lifts and cableways, 100 kilometres of hiking paths, and opportunities for mountain hikes and climbing, the summer landscape beckons exploration.

In winter, Kitzbühel transforms into a snow-covered wonderland, offering what has been hailed as the "World's Best Ski Resort," the KitzSki region. With 54 lifts, 215 kilometres of ski runs, and a thrilling halfpipe, skiers and snowboarders alike will find paradise here. The town also provides ski schools and dedicated children's ski schools, making it perfect for all levels, while cross-country ski tracks, high-altitude pistes, and winter walking paths cater to those who prefer a slower pace.

For those seeking variety, the Skiwelt WilderKaiser-



Brixental ski region, located just 15 kilometres away, is another attractive option just waiting to be explored.

Whether you're visiting during the snowy winter months or the sunny summer season, Kitzbühel and its surroundings promise a remarkable holiday filled with adventure, relaxation, and a touch of alpine glamour.

Local Amenities

Nearest Airport	Salzburg Airport (75.8 km)
Nearest Airport 2	Innsbruck Airport (96.2 km)
Nearest Piste	Kampen Valley (5 km)
Nearest Ski Lift	Hahnenkammbahn Gondola (5 km)
Nearest Ski Hire	Sport PRO (83 m)
Nearest Restaurant	Restaurant Anna - Kitzbühler Genuss Restaurant (190 m)
Nearest Bar/Pub	Kulturhaus Reith (280 m)
Nearest Supermarket	Mpreis (700 m)
Nearest Village	Reith bei Kitzbühel (210 m)
Nearest Town	Kitzbühel (6 km)

What we love

- We loved the cosy yet modern interior of Apartment Horn
- The whole family enjoyed making use of the resort's facilities such as the hot tub and sauna
- The apartment's location is wonderful, offering easy access to the slopes as well as plenty of winter and summer attractions

What you should know...

- Guests staying at Apartment Horn share one bathroom
- One of the bedrooms features both a double bed and a single, making it ideal for families
- A cot is available in the apartment for the youngest guests

Terms & Conditions

- **Security deposit:** €500 charged to clients' credit card before arrival and refunded two weeks after departure, subject to full inspection.
- **Arrival time:** Between 4.00 p.m. and 7.00 p.m. Other arrival times are on request only. Please enquire.
- **Departure time:** 10.00 a.m.
- **Energy costs included?:** Yes, included in the rental price.
- **Linen & towels included?:** Yes, included in the rental price.
- **Pets welcome?:** Yes, on request only and with prior agreement with the owner.
- **Other Ts and Cs:** Please note that your booking will only be confirmed once we have checked availability with the owner/agent. Please note that published rates are only valid for the current year. Any bookings for subsequent years will be on request only and correct rates will be confirmed at the time of booking.
- **Changeover day:** Saturday.
- **End of stay cleaning available?:** Yes. However, guests are required to leave the accommodation clean, tidy and in the same condition as on their arrival. Any extra cleaning, laundry, maintenance and/or rubbish disposal required will be charged against the security deposit.
- **Smoking Allowed?:** Strictly no smoking & vaping inside the chalet.
- **Minimum stay:** 7 nights.
- **Heating costs included?:** Yes, included in the rental price.
- **Tax:** Yes, included in the rental price.
- **Internet access?:** Yes, internet access is included in the rental price.
- **Stag & Hen Do Allowed? :** Weddings, stag/hen parties and other celebrations are on request only.