

# Apartment Eggl

Region: KitzSki    Sleeps: 4

---

## Overview

Apartment Eggl is a stylish penthouse apartment located within the contemporary Dorfbresort Kitzbühel, offering an exceptional alpine escape for up to four guests. This two-bedroom, one-hundred-square-metre retreat combines understated elegance with warm Alpine character, providing a welcoming setting for both winter and summer stays.

The open-plan living area is bright and inviting, featuring comfortable cream sofas, wooden furnishings, and a satellite TV. A wooden bench dining table offers a cosy space for sociable meals, while the well-equipped kitchen includes an oven, ceramic hob, dishwasher, toaster, kettle and electric coffee machine. Floor-to-ceiling windows frame striking mountain views, with access to a private furnished balcony—ideal for al fresco dining or a peaceful morning coffee.

Both bedrooms are tastefully styled with solid wood furniture and sumptuous double beds, sharing two modern bathrooms with showers. Guests can also enjoy access to the resort's shared spa facilities, including a sauna, steam room, hot tub, and relaxation areas, as well as bicycle and ski storage.

Set in the heart of Reith bei Kitzbühel, the apartment is within easy reach of local shops, restaurants, and ski lifts. The picturesque Schwarzsee lake, just four kilometres away, offers swimming and scenic walks during the warmer months—an added draw for nature lovers and families alike.

## Facilities



Bus/Shuttle To Slopes • Lakes and Mountains • Coffee Machine • Wellness  
• Hairdryer • Spa/Massage • Wi-Fi/Internet • Self-Catered • Skiing • Cots  
(Cribs) • Walk to Village • Modern • Chalet Apartment • Ideal for Kids •  
Ideal for Teens • Hot Tub • Walk to Restaurant • Dishwasher • Satellite TV  
• Sauna/Steam • Heating • Parking Space • Outstanding Landscapes •  
Outdoor Pursuit & Activities • Tourist Towns & Villages

# Interior & Grounds

## The Apartment

### *Layout*

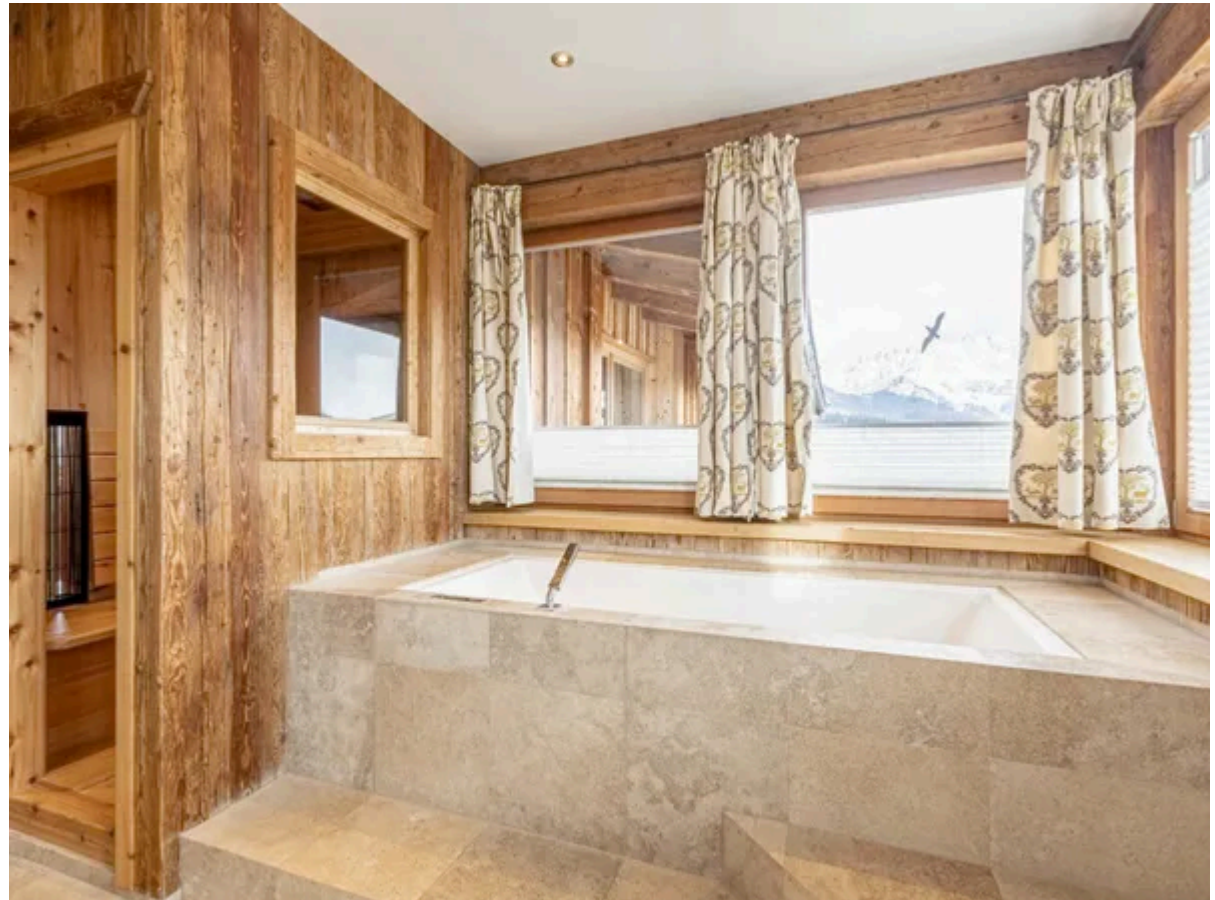
- Lounge with sofas, armchairs and flatscreen satellite TV
- Dining area with table and bench seating
- Open kitchen with oven, dishwasher, ceramic glass hob, toaster, kettle, and an electric coffee machine
- Bedroom with double bed
- Bedroom with double bed
- Bathroom with shower, basin and toilet
- Bathroom with shower, basin and toilet

### *Outdoor spaces*

- Furnished balcony
- Parking

### **Additional facilities**

- WiFi
- Baby cot
- Hairdryer
- Sauna
- Hot tub
- Relaxation room
- Spa area
- Storage for skis
- Storage for bicycles
- TV
- Balcony
- Dishwasher
- Oven
- Ceramic hobs
- Toaster
- Kettle





# Location & Local Information

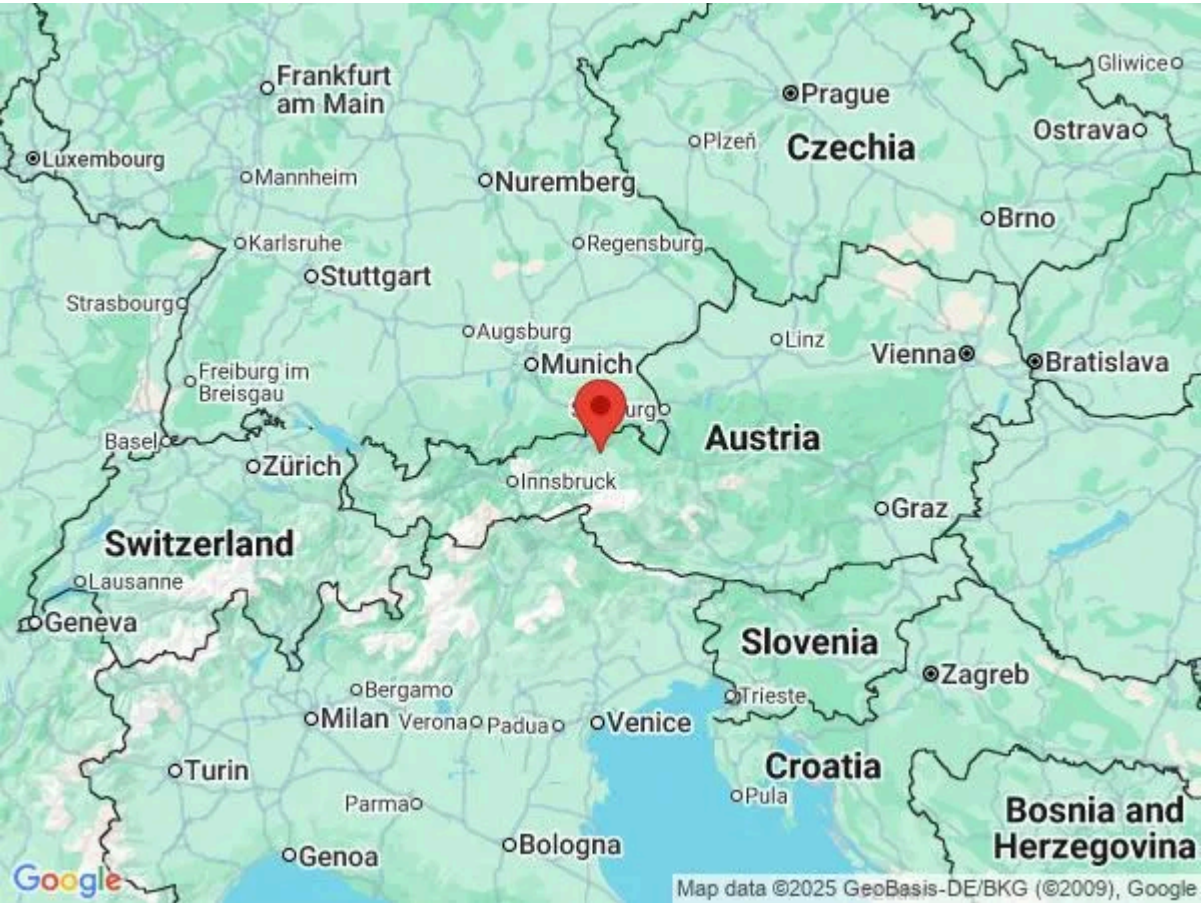
Set in the heart of the Austrian Alps, Kitzbühel is one of Europe’s most celebrated Alpine resorts, offering a captivating mix of charm, adventure, and natural beauty. From lively après-ski spots and restaurants to serene spa retreats and wellness centres, the town caters to all styles of holidaymaking.

In summer, the region is a playground for outdoor enthusiasts. A family-friendly bathing lake lies just two and a half kilometres from the centre, complemented by a heated outdoor pool, tennis courts, an 18-hole golf course, and opportunities for horseback riding, fishing, paragliding, and summer tobogganing. With over one hundred kilometres of hiking trails, multiple climbing routes, and well-maintained cycle paths, it’s ideal for exploring on foot or by bike.

When winter arrives, Kitzbühel transforms into a world-class ski destination. The expansive KitzSki area features fifty-four lifts, two hundred and fifteen kilometres of pistes, a snowboard halfpipe, and dedicated ski schools for all levels. Cross-country skiers can enjoy forty kilometres of scenic trails, while additional attractions include ice rinks, toboggan runs, and an indoor tennis centre. A free ski bus connects guests to the nearby Skiwelt Wilder Kaiser–Brixental region, just fifteen kilometres away, ensuring seamless access to even more mountain adventures year-round.

## Local Amenities

Nearest Airport	Salzburg (76 km)
Nearest Airport	Innsbruck (96 km)
Nearest Bar/Pub	Kulturhaus Reith (280 m)
Nearest Piste	Kampen Valley (5 km)



Nearest Restaurant	<b>Restaurant Anna - Kitzbühler Genuss Restaurant</b> (190 m)
Nearest Ski Hire	<b>Sport PRO</b> (83 m)
Nearest Ski Lift	<b>Hahnenkammbahn Gondola</b> (5 km)
Nearest Supermarket	<b>Mpreis</b> (500 m)
Nearest Town/City	<b>Kitzbühel</b> (6 km)
Nearest Village	<b>Reith bei Kitzbühel</b> (210 m)

## What we love

- We loved the luxurious and spacious interior of Apartment Egg!
- The penthouse's furnished balcony was a wonderful spot to sit back with a warm drink and take in the view
- It was wonderful to have access to the resort's spa and wellness facilities

## What you should know...

- Apartment Egg! is pet friendly, meaning that your much-loved furry friend can join you on your holiday
- The resort features storage for bicycles and ski equipment
- The apartment apartment's spa facilities are shared with other apartments in the complex

# Terms & Conditions

- **Security deposit:** €250 charged to clients' credit card locally and refunded two weeks after departure, subject to full inspection.
- **Arrival time:** Between 4.00 p.m. and 7.00 p.m. Other arrival times are on request only. Please enquire.
- **Departure time:** 10.00 a.m.
- **Energy costs included?:** Yes, included in the rental price.
- **Linen & towels included?:** Yes, included in the rental price.
- **Pets welcome?:** Not allowed.
- **Other Ts and Cs:** Please note that your booking will only be confirmed once we have checked availability with the owner/agent. Please note that published rates are only valid for the current year. Any bookings for subsequent years will be on request only and correct rates will be confirmed at the time of booking.
- **Changeover day:** Saturday.
- **End of stay cleaning available?:** Yes. However, guests are required to leave the accommodation clean, tidy and in the same condition as on their arrival. Any extra cleaning, laundry, maintenance and/or rubbish disposal required will be charged against the security deposit.
- **Smoking Allowed?:** Strictly no smoking & vaping inside the chalet.
- **Minimum stay:** 7 nights.
- **Heating costs included?:** Yes, included in the rental price.
- **Tax:** A Visitors Tax is payable locally (typically costs €1-€5 per adult per night - please enquire if exact amount is required).
- **Internet access?:** Yes, internet access is included in the rental price.
- **Stag & Hen Do Allowed? :** Weddings, stag/hen parties and other celebrations are on request only.