

Apartment Walde

Region: KitzSki **Sleeps:** 8

Overview

Welcome to Apartment Walde, an exquisite alpine retreat nestled in the picturesque village of Oberndorf in Tirol, a short distance from the renowned Kitzbuhel. This three-bedroom penthouse offers elegant accommodations for up to eight guests, blending comfort with sophistication.

Apartment Walde is a luxurious penthouse showcasing a soothing colour palette and contemporary furnishings, creating an atmosphere of refined elegance. Guests are treated to stunning vistas of the Alpine landscapes from the spacious living area, which features a cosy sofa bed, a welcoming fireplace, and a flat-screen TV. The adjacent dining area and open kitchen with high-end appliances provide the perfect setting for indoor meals and culinary delights.

The chalet is available year-round, but facilities, property and local amenities may vary depending upon season.

Winter | Ski Chalet

November - April / May

Apartment Walde transforms into a cosy haven for winter sports enthusiasts during winter. Located just 1.3 kilometres from skiing facilities, it offers convenient access to thrilling slopes and snowy adventures. After a day on the slopes, guests can relax in the sauna, unwind in the hammam, or enjoy the spa area's tranquil atmosphere. The private balcony with lounge furniture offers breathtaking views of the snow-covered mountains, ideal for savouring morning coffees or evening drinks after skiing.

Summer | Alpine Chalet

May - September

In the summer months, Apartment Walde becomes a serene escape amidst the lush greenery of Oberndorf in Tirol. Guests can explore hiking trails, indulge in mountain biking adventures, or simply relax and enjoy the fresh Alpine air from the private balcony. The nearby supermarket and restaurant, just a short walk away, provide easy access to dining options and local flavours, while the spa facilities offer relaxation and rejuvenation after a day of exploring the stunning surroundings.

Apartment Walde is a year-round haven, offering a perfect blend of modern luxury and alpine charm. Whether you visit in winter or summer, this penthouse promises comfort, breathtaking views, and easy access to both outdoor adventures and local amenities, ensuring an unforgettable stay in the heart of the Austrian Alps.



Facilities

Horse Riding • Bus/Shuttle To Slopes • Lakes and Mountains • Coffee Machine • Wellness • Paragliding • Self-Catered • Skiing • Cycling • Tennis Nearby • Canoeing/Kayaking • Watersports • Wi-Fi/Internet • Spa/Massage • TV • Golf Nearby • Fishing • Walking/Hiking Paths • Cots (Cribs) • Rural Location • Walk to Village • Summer Chalet • Chalet Apartment • Ideal for Kids • Ideal for Teens • Walk to Restaurant • Dishwasher • Microwave • Sauna/Steam • Heating • Parking Space • Outstanding Landscapes • Outdoor Pursuit & Activities • Tourist Towns & Villages

Interior & Grounds

The Apartment

Layout

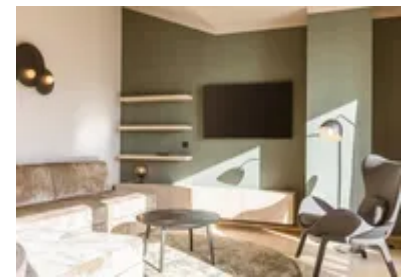
- Lounge space with sofa bed, fireplace and TV
- Dining area with table and chairs
- Kitchen with oven, dishwasher, ceramic glass hob hotplates, toaster, kettle, microwave, and an electric coffee machine
- Bedroom with double bed
- Bedroom with double bed
- Bedroom with double bed
- Bathroom with shower, basin and toilet
- Bathroom with shower, basin and toilet

Exterior

- Two furnished balconies
- Parking

Additional facilities

- WiFi
- Baby cot
- Central heating
- Sauna
- Relaxation room
- Spa area



Location & Local Information

Located within the awe-inspiring Tyrolean Alps, Oberndorf in Tirol is a captivating haven that could easily be mistaken for a scene from a postcard. This picturesque town is a true treasure trove of unspoiled natural beauty, with breathtaking mountain vistas in every direction that define the region's stunning landscape. To the north, the imposing Wilder Kaiser mountain range provides a majestic backdrop to this charming town, while in another direction, the equally awe-inspiring Kitzbüheler Horn graces the landscape, enhancing the visual splendour.

Apartment Walde's strategic location makes it the ideal gateway for immersing yourself in the wonders of the surrounding natural world. It's a haven for families seeking adventures and exploration. Winter enthusiasts will find Oberndorf in Tirol a perfect starting point for accessing the St. Johann in Tirol cable car ski area, making it a prime destination for those searching for snowy escapades.

A mere 6 kilometres away, the renowned resort of Kitzbühel beckons with irresistible charm. This iconic town, frequented by celebrities worldwide, offers a vibrant nightlife scene with bars, discos, and even a casino for those feeling lucky. For relaxation and rejuvenation, you can enjoy the indoor aquatic centre and sauna, or indulge in health treatments that completely revitalise you.

Kitzbühel is a paradise for winter sports enthusiasts, boasting the "World's Premier Ski Resort," KitzSki, featuring 54 lifts and a total of 215 kilometres of ski runs, including a halfpipe for thrill-seekers. The resort also provides ski schools and children's ski programs, catering perfectly to families. Exploring the area is a delight with 40 kilometres of cross-country ski tracks, high-altitude pistes, and scenic winter walking paths. Adventure-seekers can relish the two toboggan runs, while ice skating enthusiasts will delight in the natural and artificial ice rink. Indoor tennis facilities are available for those who wish to stay active even during the colder months.



All-Year Activities	Winter Activities	Summer Activities
<div><div>- Skiing</div><div>- Paragliding</div><div>- Ice Skating</div><div>- Mountaineering</div><div>- Guided Tours</div><div>- Hiking</div><div>- Altitude Experiences</div><div>- Horse Riding</div><div>- Bowling</div><div>- Local Markets</div><div>- Aquatics</div><div>- Fitness Courses</div></div>	<div><div>- Ski Off Piste</div><div>- Ski Touring</div><div>- Pedestrian and snowshoe walks</div><div>- Snowboarding</div><div>- Cross Country Skiing</div><div>- Ice Climbing</div><div>- Dog Sledging</div><div>- Heliski</div><div>- Snowshoeing</div><div>- Speed Riding</div><div>- Ski Joering</div><div>- Adaptive Skiing</div><div>- MTB on snow</div><div>- First tracks skiing</div><div>- Ice Floating</div><div>- Snowtubing</div><div>- Microlight</div><div>- Luge Snooc</div></div>	<div><div>- Trekking and Hiking</div><div>- Mountain Bike / eBike</div><div>- Trail Running</div><div>- Rock Climbing</div><div>- Road Cycling</div><div>- Water Sports</div><div>- Golf / Mini-golf</div><div>- Adventure and Fun Parks</div><div>- Tennis</div><div>- Squash</div><div>- Lake Swimming</div><div>- Fishing</div><div>- Paintballing</div><div>- Trampolining</div><div>- Archery and rifle shooting</div><div>- Acroland</div></div>



	<ul style="list-style-type: none">- Moonbikes- Snowmobiling	<ul style="list-style-type: none">- Skateboarding- White water swimming- Kayaking / Rafting- Via Ferreta- Canyoning- Quad and Buggy Driving
--	--	--

Local Amenities

Nearest Airport	Salzburg (68 km)
Nearest Airport 2	Innsbruck (94.8 km)
Nearest Bar/Pub	Gasthaus Dorfwirt (220 m)
Nearest Golf	Golfplatz Kitzbühel-Schwarzsee-Reith (8.7 km)
Nearest Piste	Tauwiese-Bauernpenzig (1.3 km)
Nearest Restaurant	Pizzeria Marco (290 m)
Nearest Ski Hire	Staileraí – der Skiverleih (1.2 km)
Nearest Ski Lift	Bauernpenzig (1.3 km)
Nearest Supermarket	Mpreis (750 m)
Nearest Tennis	Kitzbüheler Tennisclub (6.9 km)
Nearest Town	Kitzbühel (6.1 km)
Nearest Village	Oberndorf in Tirol (250 m)

What we love

- We loved the spacious and stylish interior of Apartment Walde
- It was wonderful to have so many amenities and attractions just a short distance away, including Kitzbuhel, one the most celebrated regions in the Alps
- The whole family enjoyed socialising on the penthouse's furnished balcony. It was a great spot for enjoying after-dinner drinks with a view

What you should know...

- Guests staying in Apartment Walde can have full use of the apartment building's shared spa and wellness facilities
- The apartment features only double beds, with two guests accommodated on the sofa bed in the lounge area
- The apartment building operates a strict no-smoking policy

Terms & Conditions

- **Security deposit:** €250 paid locally and refunded two weeks after departure, subject to full inspection.
- **Arrival time:** Between 4.00 p.m. and 7.00 p.m. Other arrival times are on request only. Please enquire.
- **Departure time:** 10.00 a.m.
- **Energy costs included?:** Yes, included in the rental price.
- **Linen & towels included?:** Yes, included in the rental price.
- **Pets welcome?:** Not allowed.
- **Other Ts and Cs:** Please note that published rates are only valid for the current year. Any bookings for subsequent years will be on request only and correct rates will be confirmed at the time of booking. Please note that your booking will only be confirmed once we have checked availability with the owner/agent.
- **Changeover day:** Saturday.
- **End of stay cleaning available?:** Yes, included in the rental price. However, guests are required to leave the accommodation clean, tidy and in the same condition as on their arrival. Any extra cleaning, laundry, maintenance and/or rubbish disposal required will be charged against the security deposit.
- **Smoking Allowed?:** Strictly no smoking & vaping inside the chalet.
- **Minimum stay:** 7 nights.
- **Heating costs included?:** Yes, included in the rental price.
- **Tax:** A Visitors Tax is payable locally (typically costs €1-€5 per adult per night - please enquire if exact amount is required).
- **Internet access?:** Yes, internet access is included in the rental price.
- **Stag & Hen Do Allowed? :** Weddings, stag/hen parties and other celebrations are on request only.

The chalet is available year-round, but facilities, property and local amenities may vary depending upon season.