

Orchard Manor

Region: The South West **Sleeps:** 16

Overview

Nestled in the heart of the picturesque Cotswolds, Orchard Manor stands as a testament to history, elegance, and timeless beauty. This charming estate, dating back to 1476 and proudly owned by the same family for generations, is a true masterpiece set in an Area of Outstanding Natural Beauty.

The moment you step onto the grounds of Orchard Manor, you are transported to a world of tranquillity and splendour. The property is cocooned in exceptional privacy, surrounded by unspoilt landscapes and breathtaking vistas of the Cotswolds in every direction. As you take in the sweeping views, it becomes clear that this is a place where nature and history coexist in perfect harmony.

The nearby village is a delightful addition to your stay, offering an award-winning pub, a traditional butcher, a quaint cafe, and a charming farm shop, all within walking distance. Beyond the village, the Cotswolds' most famous destinations, such as Chipping Campden, Broadway, Stow on the Wold, Chipping Norton, Daylesford, and Soho Farmhouse, are just a stone's throw away.

Orchard Manor is a sun-soaked haven, with its west-facing façade and large windows that flood the interior with warm afternoon and evening light. The sunsets from the beautifully manicured gardens are nothing short of spectacular.

Inside, the house is a treasure trove of history, with original 17th-century wood panelling, ornate plasterwork, and exposed wooden beams. While the house retains its historic charm, it has been thoughtfully modernised to ensure your comfort, with contemporary amenities like modern bathrooms, hot water, central heating, and Wi-Fi.



The heart of the house is its stunning hall, featuring 17th-century oak panelling, a double-height ceiling, and an inviting open fire. The drawing room, with its open fireplace, offers a perfect spot for gatherings, while the cosy sitting room is ideal for watching a film or curling up with a book by the fire.

With eight spacious, light-filled bedrooms, all en-suite, and a dining room that can accommodate up to eighteen guests, Orchard Manor is an idyllic retreat for large gatherings. The chef's kitchen is a dream for those who love to cook, equipped with modern appliances and conveniences.

The estate's twenty acres of parkland and orchards, a tennis court, a wild spring-fed swimming lake with water sports equipment, a fully-equipped boathouse for alfresco dining, and a South African-style fire pit overlooking the lake provide ample opportunities for outdoor relaxation and recreation.

Orchard Manor is not just a holiday destination; it's an experience, a piece of living history where elegance and tradition combine to create an unforgettable stay in the Cotswolds.

Facilities

Tennis Nearby • Fishing • Golf Nearby • Tennis Court • Wine Tasting • Wi-Fi/Internet • Walking/Hiking Paths • Historical Sites • Hairdryer • Coffee Machine • Washing Machine • Decorated for Christmas • Table Tennis • Chef/Cook Available • Wow Factor • Rural Location • Cots (Cribs) • Dry Hire Option • Marquee Hire Permitted • Manor • Maid Service Available • Outdoor Ceremony • Food blender • Flexible Catering Options • Allow External Caterers • Allow Fireworks • Nearby Church/Chapel • Kid-friendly museum • Wine-Tasting Available • Catering Available • Playground nearby • Swings • Trampoline • Croquet • Ideal for Babies & Toddlers • Boules/Petanque • Ideal for Kids • Tennis rackets • Footballs • Football net • Plastic crockery • Ideal for Teens • Pets on Request • <1hr to Airport • Tumble Dryer • Dishwasher • Microwave • Electric Car Charger • All Bedrooms En-Suite • Smart TV • Outdoor Games • Working Fireplace/Woodburner • Heating • High Chair(s) • Parking Space • Outstanding Landscapes • Outdoor Pursuit & Activities • Tourist Towns & Villages

Interior & Grounds

Accommodation

Living area

- Drawing room with large open fireplace and drinks room
- Hall with 17th century oak panelling and open fire
- TV room with fireplace
- Dining room to sea from 8-18 guests
- Fully equipped kitchen

Bedrooms

- Bedroom 1: Super-king size bed with ensuite
- Bedroom 2: Super-king size bed with ensuite
- Bedroom 3: Super-king size bed with ensuite
- Bedroom 4: Super-king size bed with ensuite
- Bedroom 5: Twin beds with ensuite
- Bedroom 6: Twin beds with ensuite
- Bedroom 7: Separable super-king bed with ensuite
- Bedroom 8: Separable super-king bed with ensuite

Exterior

- Beautiful traditional Cotswold gardens
- Tennis court
- Wild spring fed swimming lake (with paddle board, rowing boat and rods)
- Boathouse fully equipped for alfresco dining
- Large South African style fire pit (BOMA) and gas BBQ on the bank of the lake
- Football/pentanque/croquet lawn
- 20 acres of parkland and orchards

Additional Facilities

- Wi-Fi / high speed broadband
- Central heating



Location & Local Information

Tucked away in the heart of the Cotswolds, Orchard Manor graces guests with a captivating holiday destination that seamlessly combines history and the natural beauty of the surrounding towns and villages. Surrounded by this charming landscape, the manor offers a serene escape from the hustle and bustle of modern life, with a multitude of enchanting towns and villages within easy reach.

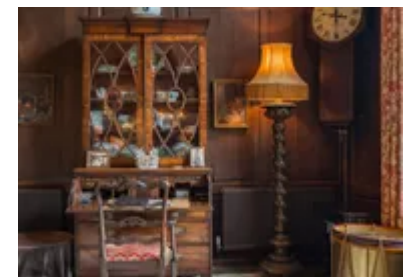
The property's traditional Cotswold garden, occasionally unveiled to the public and Garden Club of America members, provides a stunning backdrop for the manor's idyllic setting. To the west, the gardens frame the captivating views, offering glimpses of the setting sun and extending all the way to the iconic Broadway Tower, situated just five miles away.

Adjacent to the manor, you'll find the picturesque towns of Chipping Campden, Broadway, Stow on the Wold, and Chipping Norton, each brimming with historic charm and quaint Cotswold architecture. A short drive away, Daylesford and Soho Farmhouse add a touch of luxury to your stay, providing fine dining and wellness experiences.

The enchanting rose garden, within Orchard Manor's estate, offers a peaceful haven, surrounded by numerous rose varieties, while an open-sided summerhouse provides a versatile space for various activities, including relaxation and al fresco dining. For the active guest, 20 acres of parkland await exploration, with swings under ancient walnut trees, open grassy areas for picnics and football, and rows of apple trees that signify the estate's history as a working fruit farm.

Orchard Manor's prime location serves as a gateway to the beauty and history of the Cotswolds' surrounding towns and villages, making it an unforgettable destination where the past and present harmoniously coexist.

Local Amenities



Nearest Airport	Birmingham Airport (64 km)
Nearest Ferry Port	Bristol Ferry Port (109 km)
Nearest Train Station	Moreton-in-Marsh Train Station (11 km)
Nearest Village	Ebrington (In walking distance)
Nearest Town/City	Chipping Campden (4 km)
Nearest Bar/Pub	Ebrington Arms (In walking distance)
Nearest Shop	Vegetable Matters Farm Shop and Cafe (0.5 km)
Nearest Golf	Broadway Golf Course (9 km)
Sightseeing	Hidcote National Trust Gardens (4.5 km)

What we love

- Orchard Manor offers a timeless Cotswold escape, surrounded by charming villages like Chipping Campden and Broadway.
- Its exquisite rose garden and open-sided summerhouse create perfect moments for relaxation and al fresco dining.
- Inside, the manor blends historic charm with modern luxuries, featuring spacious rooms, original woodwork, and the warmth of open log fires!

What you should know...

- The manor's historic ornaments may require cautious handling. If young children are visiting, kindly inform us so we can take the necessary precautions.
- The vast gardens may pose challenges for those with mobility issues.
- Please ensure that children are supervised both around the lake and when the fireplace is in use.
- The spring-fed swimming lake is a serene amenity but demands responsible use.
- Our farm is operational, and you may encounter workers and farm dogs on the premises from time to time.
- At the rear of the house, there is an annexe that sees occasional use. It boasts a separate entrance and driveway, ensuring that guests at the manor will not be disturbed.

Terms & Conditions

- **Security deposit:** £1500 charged to the client's credit card as a pre-authorisation at least 2 weeks prior to arrival and refunded two weeks after departure, subject to a full inspection.
- **Arrival time:** 4:00 pm
- **Departure time:** 10:00 am
- **Energy costs included?:** Yes, included in the rental price
- **Linen & towels included?:** Yes, included in the rental price
- **Pets welcome?:** Pets are welcome on request. Please enquire at time of booking.
- **Other Ts and Cs:** Full supervision of children is necessary on the premises and around the fireplace. We assume no liability.
- **Changeover day:** All days
- **Smoking Allowed?:** No smoking or vaping
- **Minimum stay:** 3 nights
- **Heating costs included?:** Yes, included in the rental price
- **Tax:** Tourist tax is included in the rental price
- **Stag & Hen Do Allowed? :** Not allowed