

Apartment Leslie

Region: The South East Sleeps: 4

Overview

Apartment Leslie offers a chic and modern haven nestled near the iconic Westminster Abbey in the heart of London. This stunning one-bedroom flat is the epitome of sophistication and style, offering a truly unique and memorable stay for your London adventures.

As you step inside Apartment Leslie, you'll be immediately struck by its exquisite design, reminiscent of something straight out of an interior design magazine. The apartment has been beautifully renovated to create a bright and airy space that exudes elegance. With spacious interiors and a delightful terrace, it offers ample room to relax and unwind.

The spacious bedroom boasts a king-size bed, ensuring a restful night's sleep after a day of exploring London's treasures. The contemporary bathroom, fully equipped kitchen, and dining area suitable for up to four guests add to the comfort and convenience of your stay.

The living room is a perfect spot to unwind with a Smart TV and a double sofa bed for additional guests. Opening onto a charming terrace, this is the perfect spot to enjoy a little calm among the hustle and bustle of the city. Furnished with loungers and a small table, you can sip your morning coffee or an evening aperitif before exploring the rest of what London has to offer.

The apartment's location is a dream for sightseers. You're just a short walk away from iconic landmarks, including the Jewel Tower, Westminster Hall, the Palace of Westminster, Big Ben, and Buckingham Palace. The SEA LIFE London Aquarium, the London Eye, and The National Gallery are also within easy reach, making it a haven for culture and history enthusiasts.



Apartment Leslie is not only perfect for couples and solo travellers but also family-friendly. It's situated on the second floor with a lift for easy access, though there are four flights of stairs for those who prefer a more active start to their day.

Your London adventure begins here at Apartment Leslie, a uniquely designed flat that promises comfort, style, and convenience in every way.

Facilities

Air-Con • City Homes & Apartments • Wow Factor • Walk to Restaurant • Wi-Fi/Internet • Easy By Train • Washing Machine • Coffee Machine • Hairdryer • TV • Laptop Friendly Workspace • Tumble Dryer • Dishwasher • Heating

Interior & Grounds

The Apartment

Interior

- Living room with smart TV and double sofa bed
- Fully equipped kitchen
- Dining area for four guests
- Bedroom 1: King-size bed
- Bathroom

Exterior

- Terrace

Additional Facilities

- Wi-Fi
- Underfloor heating
- Central cooling system in the kitchen & living room (not in any bedrooms or bathrooms)
- Concierge service from 9 AM - 5 PM on weekdays
- Essentials, linens and towels are provided



Location & Local Information

Apartment Leslie is a prime holiday destination nestled in the heart of Westminster, London. This exquisite flat is strategically located amidst a treasure trove of iconic landmarks and attractions, offering an unforgettable vacation experience.

Westminster is synonymous with British history and political grandeur, and this apartment places you right at the heart of it all. A short ten-minute walk will take you to the historic Jewel Tower and Westminster Hall, where echoes of centuries past still resonate. The majestic Palace of Westminster and the world-renowned Big Ben are just an eleven-minute stroll away, inviting you to witness the grandeur of British governance.

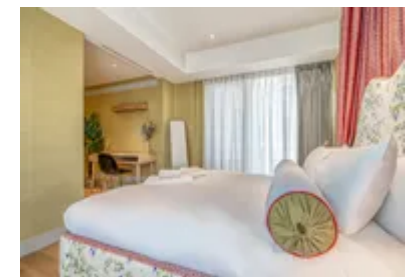
Beyond the political sphere, this location offers a glimpse into London's vibrant cultural scene. A leisurely twelve-minute walk will lead you to Buckingham Palace, while the SEA LIFE London Aquarium, London Eye, and The National Gallery are all within easy reach.

For transportation, you have the convenience of nearby bus stops and St James's Park subway station, allowing you to explore the city with ease. Additionally, the charming River Thames is within your grasp, offering scenic walks and river cruises to further enrich your London adventure.

Apartment Leslie is the perfect launchpad for a holiday that seamlessly combines history, culture, and modern comfort in one of London's most cherished neighbourhoods.

Local Amenities

Nearest Airport	London Heathrow Airport (25 km)
Nearest Train Station	St James' Park Underground Station (300 m)



Nearest Supermarket	Sainsbury's Local (160 m)
Nearest Restaurant	Mio Restaurant & Bar (60m)
Nearest Bar/Pub	The Speaker (160m)
Sightseeing	Westminster Abbey (650m)

What we love

- Apartment Leslie is a stone's throw from Big Ben, Buckingham Palace, and Westminster Abbey, making it a history lover's dream!
- As you step inside Apartment Leslie, you'll be immediately struck by its exquisite design, reminiscent of something straight out of an interior design magazine.
- Underfloor heating, Smart TV, and a fully equipped kitchen ensure a cosy and convenient stay in the heart of London.

What you should know...

- There is no free parking available at this property.
- The property is on the second floor, and a lift is available.
- There are four flights of stairs to the property.

Terms & Conditions

- **Security deposit:** Oliver's Travels to charge £200 to client's credit card before arrival and refunded two weeks after departure, subject to full site inspection.
- **Arrival time:** 15:00 - 20:00
- **Departure time:** 10:00
- **Energy costs included?:** Yes, included in the rental price.
- **Linen & towels included?:** Yes, included in the rental price.
- **Pets welcome?:** Not allowed.
- **End of stay cleaning:** Extra £170, paid to Oliver's Travels with the balance. Guests are required to leave the accommodation clean, tidy and in the same condition as on their arrival. Any extra cleaning, laundry, maintenance and/or rubbish disposal required will be charged against the security deposit.
- **Smoking Allowed?:** Smoking & Vaping are not permitted.
- **Heating costs included?:** Yes, included in the rental price.
- **Internet access?:** Wi-Fi internet access included.
- **Stag & Hen Do Allowed? :** Weddings, stag/hen parties and any special events are not allowed.