

Apartment Le Praz

Region: 3 Valleys Sleeps: 6

Overview

Set on the peaceful second floor of the Cinq Sommets residence in Courchevel Le Praz, Apartment Le Praz is a bright and inviting alpine retreat for up to six guests. Designed in a fresh, contemporary style, it combines sleek mountain architecture with modern comfort throughout its 84 square metres of space.

Inside, guests will find an open-plan living area where a fully equipped kitchen flows naturally into a dining space and cosy lounge. After a day on the slopes, the soft furnishings and calming tones make it the perfect place to unwind, share a hearty meal, or relax in front of the TV.

Each of the three double bedrooms has been thoughtfully furnished, including a master with its own en-suite shower room, while a second bathroom with a bath and a separate toilet ensures comfort for all. The apartment also provides Wi-Fi, a washing machine, a private ski room, and a covered parking space for added ease.

A furnished balcony invites guests to take in the mountain air and views over Le Praz. The Praz gondola is just moments away, connecting you to Courchevel 1850 and the full Three Valleys ski area within minutes. Apartment Le Praz offers a calm, contemporary base with instant access to some of the best skiing in the Alps.

Facilities

Skiing • Ski Lift Nearby • Ski School Nearby • Ski Room • Bus/Shuttle To Slopes • Walk To Slopes • Self-Catered • Walking/Hiking Paths • Walk to Village • Ideal for Kids • Ideal for Teens • Cots (Cribs) • Modern • Walk to Restaurant • Parking Space • Wi-Fi/Internet • Lakes and Mountains • Chalet Apartment • Washing Machine • Coffee Machine • Outstanding Landscapes • Hairdryer • Outdoor Pursuit & Activities • Tourist Towns & Villages • TV • Garage • Dishwasher • Heating • Bathroom Toiletries • Ideal for Babies & Toddlers • High Chair(s)



Interior & Grounds

The Apartment

Interior

- Lounge with sofas, armchairs, coffee table and TV
- Dining area with seating for six guests
- Fully equipped kitchen
- Balcony access with mountain views
- Shared w/c and bathroom for bedrooms 2 & 3

Bedrooms:

Master Bedroom: With double bed (160 x 200cm), wardrobe, and an en-suite bathroom with shower, basin and toilet

Bedroom 2: With double bed (160 x 200cm) and wardrobe

Bedroom 3: With double bed (160 x 200 cm) and wardrobe

Outside Grounds

- Balcony with outdoor seating
- Covered parking space

Additional Facilities

- Wi-Fi
- TV
- Central heating
- Washing machine
- Dishwasher
- Raclette machine
- Coffee machine
- Ski room
- Parking space
- Cot and highchair available (subject to an extra cost)



Location & Local Information

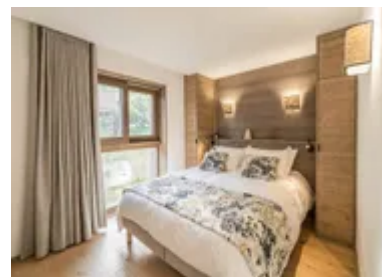
Courchevel Le Praz, also known as Courchevel 1300, is a charming alpine village that blends authentic Savoyard character with access to world-class skiing. The apartment sits within easy reach of the Praz gondola, which lifts guests to Courchevel 1850 in just six minutes, opening the door to the vast Three Valleys ski domain.

Le Praz itself is a picture-perfect setting of narrow lanes, wooden chalets, and welcoming restaurants. After an exhilarating day on the slopes, visitors can wander through the village to discover cosy bars, elegant dining spots, and local shops selling regional delicacies. The Olympic ski jump, built for the 1992 Winter Games, stands as a proud landmark above the village and gives Le Praz its unique sporting atmosphere.

For non-skiers or those seeking variety, winter walking trails weave through snow-dusted forests and lakeside paths, while the resort's shuttle network makes it simple to explore neighbouring Courchevel villages. Peaceful yet well connected, Le Praz offers a traditional alpine experience at the foot of one of the world's most celebrated ski areas.

Local Amenities

Nearest Airport	Geneva (135 km)
Nearest Airport	Lyon (187 km)
Nearest Bar/Pub	Bar La decente (600 m)
Nearest Piste	Brigues (600 m)
Nearest Restaurant	Restaurant La Table de mon Grand Père (450 m)
Nearest Shop	Le Praz Essentiels (500 m)



Nearest Ski Hire	Location ski Courchevel 1300 (400 m)
Nearest Ski Lift	Télécabine Le Praz (450 m)
Nearest Ski Lift	Télesiège La Forêt (450 m)
Nearest Village	Courchevel La Praz (500m)

What we love

- Apartment Le Praz is a beautifully finished apartment blending modern style with traditional alpine touches.
- The open-plan layout creates a sociable hub for cooking, dining and relaxing together after a day out on the slopes
- The peaceful location within one of Courchevel's most charming and authentic villages is perfect for friends or families looking to enjoy the peace of the Alps.
- Apartment Le Praz boasts excellent access to local restaurants, bars and boutique shops in not only Le Praz but further afield in the other Courchevel Villages

What you should know...

- There is no elevator to this second-floor apartment, so it may not be suitable for those with limited mobility
- Only the Master Bedroom features ensuite facilities
- The residence has a ski room for your ski gear, located in the underground garage.
- Please note that roads leading to the apartment can be snowy and icy in the height of winter, coming prepared with snow chains and snow tyres are essential if you are arriving by car.

Terms & Conditions

- **Security deposit:** Secure link sent to the client's email to fill in the details of the client's bank card online 2 weeks before the arrival for the amount of €1500. This is in the form of a card authorisation, funds are not cashed
- **Arrival time:** Check-in 5.00 PM.
- **Departure time:** Check-out 10.00 AM.
- **Energy costs included?:** Yes, included in the rental price.
- **Linen & towels included?:** Yes, included in the rental price.
- **Pets welcome?:** Not allowed.
- **Other Ts and Cs:** Please note that rental of a cot and highchair is at an extra cost paid directly to the owner: Cot: 40€ per week Highchair: 30€ per week
- **Changeover day:** Saturday.
- **End of stay cleaning:** Standard changeover clean included in the price. Guests are required to leave the accommodation clean, tidy and in the same condition as on their arrival. Any extra cleaning, laundry, maintenance and/or rubbish disposal required will be charged against the security deposit.
- **Smoking Allowed?:** Smoking & Vaping are not permitted.
- **Minimum stay:** 7 nights.
- **Heating costs included?:** Yes, included in the rental price.
- **Tax:** French Visitors Tax payable alongside balance (typically costs €1-€5 per adult per night- please enquire if exact amount is required).
- **Internet access?:** Wi-Fi internet access included.