

Chalet 2100

Region: Megeve Sleeps: 10

Overview

Located in the picturesque town of Megève, Chalet 2100 offers the perfect sanctuary for an unforgettable winter retreat. Located in a tranquil and exclusive area, this Haut-Savoyard chalet can comfortably accommodate up to 10 guests, making it an ideal choice for families or groups seeking an alpine getaway.

The chalet's interior exudes a rustic charm that celebrates the region's traditional architecture, with a spacious living area that seamlessly combines the lounge and dining room and features an abundance of wood elements that pay homage to classic chalet design. The lounge space features a beautiful wood-burning fireplace that promises toasty evenings after a day on the slopes, sumptuous leather sofas and a flat-screen TV, while a large dining table with seating for ten offers the perfect setting for shared meals and memories.

The fully equipped kitchen, adjacent to the dining area, is a chef's delight, complete with an oven, toaster, Nespresso coffee maker, and a refrigerated wine cellar, ensuring that culinary endeavours are a breeze.

Chalet 2100 features five double bedrooms, all decorated to the same high standard as the rest of the chalet, three of which benefit from ensuite bathroom facilities. An additional independent bathroom completes the layout and ensures everyone has space to unwind and rejuvenate during their stay.

For added convenience, the chalet offers additional amenities to make your stay as comfortable and convenient as possible, including a ski locker, a safe for your valuables, WiFi, and high chairs and baby cots, which are available upon request.



With its unique character, perfect location, and luxurious amenities, Chalet 2100 promises an exceptional winter holiday, offering an unforgettable experience amidst the stunning alpine landscapes of the French Alps.

Facilities

Bus/Shuttle To Slopes • Wellness • Skiing • Self-Catered • Ideal for Xmas/NY • Ski Chalet • Special Offer • Has Discount • Great Value • Parking Space • Wi-Fi/Internet • Lakes and Mountains • Washing Machine • Outstanding Landscapes • Hairdryer • Outdoor Pursuit & Activities • Tourist Towns & Villages • TV • Hot Tub • Dishwasher • Microwave • Home Cinema • Working Fireplace/Woodburner • Heating

Interior & Grounds

The Chalet

Interiors:

Ground floor

- Ski room

First floor

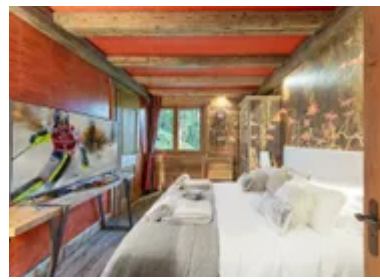
- Lounge space with sofas, fireplace and TV
- Dining area with table and chairs for ten guests
- Kitchen with breakfast bar and stools, oven, toaster, kettle, Nespresso coffee machine, fridge/freezer, refrigerated wine cellar
- Bedroom with double bed (160 x 200), cupboard, TV and ensuite bathroom with
- Bedroom with double bed (180 x 200), cupboard, TV and ensuite bathroom
- Bedroom with double bed (180 x 200), cupboard, TV and ensuite bathroom
- Bedroom with double bed (160 x 200), cupboard and TV
- Bedroom with double bed (180 x 200), balcony and safe
- Bathroom with shower, double basin and toilet

Outdoor spaces

- Balcony

Additional Facilities

- WiFi
- Cot and highchair (available on request)
- Laundry room
- Ski room
- Changing room
- Shoe warmer
- Indoor jacuzzi
- Wellness area



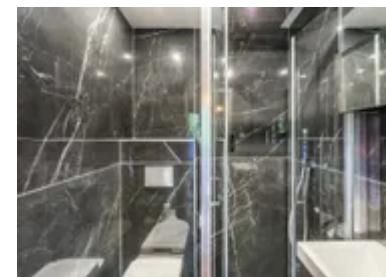
Location & Local Information

Nestled in the heart of Megève, this charming chalet boasts a location that perfectly combines serenity with accessibility. Situated in a quiet and exclusive area, it offers a peaceful retreat from the bustling world, making it an ideal destination for those seeking a tranquil alpine escape.

Megève, a picturesque and well-loved resort town in the French Alps, is renowned for its exceptional winter offerings. The chalet is strategically placed to take advantage of the town's attractions and amenities, including its extensive network of ski slopes. Whether you're an avid skier or a novice, the nearby ski slopes and cable cars offer an abundance of opportunities for winter sports enthusiasts. You can easily access these slopes from the chalet, allowing you to enjoy the thrill of downhill skiing or snowboarding.

Beyond the winter sports, Megève is a destination that offers a rich array of activities year-round. In the warmer months, the town's charming streets come alive with colourful flowers and bustling markets. Hiking and mountain biking trails crisscross the surrounding mountains, offering adventure and exploration. The quaint town centre itself is a treasure trove of shops, boutiques, and restaurants, where you can sample delicious Savoyard cuisine or shop for souvenirs.

Chalet 2100's prime location in Megève offers an enviable combination of tranquillity and accessibility to the town's many attractions and amenities. With its proximity to the ski slopes, a vibrant town centre, and a host of in-house amenities, it promises an all-encompassing Alpine experience that caters to both adventure seekers and those who wish to unwind in the lap of luxury.



Local Amenities

Nearest Airport

**Geneva Airport
(86km)**

Nearest Village	Megeve (700m)
Nearest Piste	Mont d'arbois (2.5km)
Nearest Ski Lift	2100 (2km)
Nearest Ski Hire	Ski Concept (900m)
Nearest Restaurant	Restaurant Le Chamois (450m)
Nearest Bar/Pub	Le Cocoon (400m)
Nearest Supermarket	Carrefour Montagne (950m)

What we love

- We loved the stylish and luxurious interior of Chalet 2100, which is bursting with high-end amenities
- An indoor jacuzzi and wellness area offered an area of relaxation
- There are some fabulous amenities in the surrounding area that cater to winter sports enthusiasts

What you should know...

- A cot and highchair are available on request
- A ski locker keeps your equipment safe while ensuring that your living spaces stay dry and clutter-free
- The chalet is located approximately 4900 metres from the centre of the Megeve

Terms & Conditions

- **Security deposit:** €8000 paid via bank transfer to the owner 30 days before arrival and refunded two weeks after departure, subject to full inspection. Check-out 10.00 AM.
- **Arrival time:** Check-in 5.00 PM.
- **Energy costs included?:** Yes, included in the rental price.
- **Linen & towels included?:** Yes, included in the rental price.
- **Pets welcome?:** Not allowed.
- **Changeover day:** Saturday.
- **End of stay cleaning:** Standard changeover clean included in the price. Guests are required to leave the accommodation clean, tidy and in the same condition as on their arrival. Any extra cleaning, laundry, maintenance and/or rubbish disposal required will be charged against the security deposit.
- **Smoking Allowed?:** Smoking & Vaping are not permitted.
- **Minimum stay:** 7 nights.
- **Heating costs included?:** Yes, included in the rental price.
- **Tax:** French Visitors Tax payable alongside balance (typically costs €1-€5 per adult per night- please enquire if exact amount is required).
- **Internet access?:** Wi-Fi internet access included.