

Chalet Les Saules

Region: Megeve Sleeps: 15

Overview

Welcome to the epitome of mountain luxury, Chalet Les Saules — a three-storey chalet that seamlessly blends elegant decor with rustic charm, creating a haven of sophistication nestled in the heart of nature. As you step into the open-plan living area, you're greeted by the warmth of a crackling fireplace and the inviting sight of cosy curved sofas adorned with plush cushions. The wooden pillars and beamed ceilings add a touch of rustic authenticity to the overall stylish ambience - it's a real sight to behold!

The beautifully crafted furnishings extend to the additional reading lounge, where sumptuous sofas and chairs make you unwind with a good book. Adjacent to this cosy retreat is the expansive dining space, exuding luxury and offering ample room for 16 guests to gather around a table adorned with tasteful elegance. A fully-equipped kitchen awaits culinary enthusiasts, complete with high-end appliances including a coffee machine, dishwasher, dryer, electric hobs, freezer, and fridge.

Venture to the chalet's sleeping quarters you'll discover five double bedrooms, each boasting its own ensuite bathroom. For a more communal experience, a dormitory room accommodates up to 4 adults and 3 children, with two double beds and single beds ensuring a restful night's sleep for all.

On Chalet Les Saules' lower level a luxurious leisure area unfolds, featuring a cinema room for entertainment, relaxation and wellness areas, an indulgent hammam, a massage room for rejuvenation, and a fitness room for those seeking an active escape. Or why not step outside to discover the outdoor jacuzzi, offering a perfect blend of warmth and scenic beauty - pure bliss!



Finally, the chalet's pièce de résistance is its spacious and fully-furnished terrace, an idyllic spot to soak in the breathtaking views and revel in the tranquillity that only a mountain retreat of this calibre can provide. Experience the pinnacle of mountain luxury at the glorious Chalet Les Saules, where elegance meets nature in a perfect alpine symphony.

Facilities

Wi-Fi/Internet • Bus/Shuttle To Slopes • Lakes and Mountains • Self-Catered • Washing Machine • TV • Coffee Machine • Ideal for Xmas/NY • Ski Chalet • Spa/Massage • Skiing • Walk to Village • Indoor Games • Cots (Cribs) • Quirky (Unique) • Gym/Fitness Room • Ideal for Babies & Toddlers • Ideal for Kids • Ideal for Teens • Hot Tub • Walk to Restaurant • Tumble Dryer • Dishwasher • Microwave • Smart TV • Sauna/Steam • Wine Cellar • Home Cinema • Working Fireplace/Woodburner • Heating • High Chair(s) • Parking Space • Outstanding Landscapes • Outdoor Pursuit & Activities • Tourist Towns & Villages

Interior & Grounds

The Chalet

Layout

Lower Level

- Leisure area with hammam, fitness room, massage room, cinema room, relaxation area, wellness area, access to outdoor jacuzzi
- Bedroom with double bed (180 x 200), TV and ensuite bathroom with bathtub, basin and toilet
- Bedroom with double bed (180 x 200), TV, desk and ensuite bathroom with bathtub, basin and toilet
- Bedroom with double bed (180 x 200), TV, desk and ensuite bathroom with bathtub, shower, double basin and toilet
- Corner sleeping quarters with 2 double beds (160 x 200), 3 single beds (90 x 190) and ensuite bathroom with double shower, double basin and toilet
- WC
- Ski room
- Laundry room
- Wine cellar

Ground floor

- Lounge space with sofas and fireplace
- Dining area with table and chairs for 16 guests
- Full-equipped kitchen
- Bar area with stools
- Reading lounge
- WC

First floor

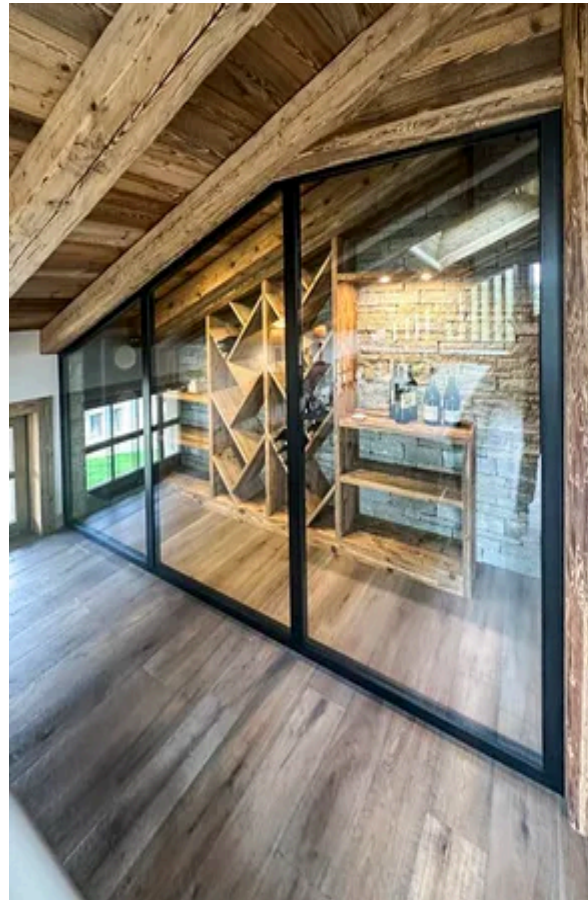
- Bedroom with double bed, TV and ensuite bathroom with bathtub, double basin and toilet

Outdoor spaces

- Furnished terrace
- Garage parking

Additional facilities

- WiFi



- TV
- Playstation
- Books
- Cot and highchair (available on request)
- Garage
- Wood fireplace
- Ski locker
- Parking space
- Outdoor furniture
- Coffee machine
- Microwave
- Fridge
- Freezer
- Vacuum
- Electric hobs
- Kitchen exhaust hood
- Toaster
- Refrigerated wine cellar
- Dishwasher _
- Washing machine
- Dryer
- Oven

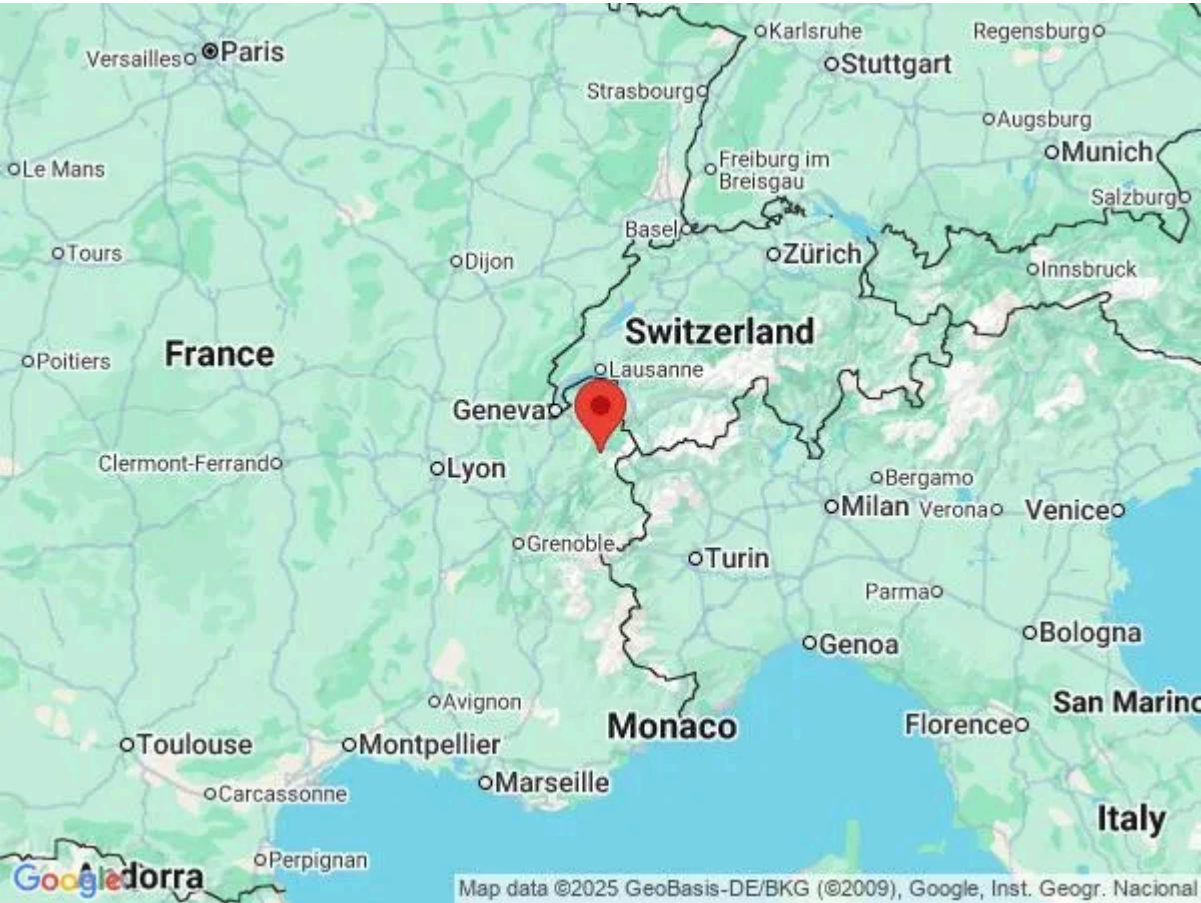
Location & Local Information

Located in the heart of the French Alps, Megeve stands as a beacon of prestige among the most renowned ski resorts, a true embodiment of the French art of living. Chalet Les Saules, perfectly situated at a mere stone's throw from the centre of this alpine gem, immerses you in the authentic charm, discreet elegance, and medium-altitude alpine environment that characterise Megeve, often hailed as the "Little Switzerland of the Alps".

Beyond the opulent comforts of the chalet, Megeve beckons with its myriad attractions. The village is a culinary haven, boasting Michelin-starred restaurants like Flocons de Sel and Le 1920, offering a taste of gastronomic excellence. The chic and brand-laden shopping streets in the centre further enhance the allure, inviting you to indulge in a leisurely stroll through a world of luxury.

The ski enthusiasts among you will revel in the chalet's proximity to the ski lift, a mere 650 metres away. The Princesse ski slope, equally accessible, promises thrilling descents against the backdrop of one of the most beautiful views of Mont Blanc. Megeve's ski area, sprawling across 324 hectares with a network of 400 km of slopes serviced by 86 lifts, is a playground for winter sports enthusiasts.

Yet, what truly sets Megeve apart is its timeless village centre. Pedestrian streets winding around the mythical Place de l'Église create a postcard vision at nightfall—a Swarovski-adorned Christmas tree, the illuminated façade of the Allard shop, horse-drawn carriages, and the play of light on the church façade form an enchanting setting. Megeve's charm is not merely a product of tourism but is rooted in its history, its architectural heritage, and the influence of the Rothschild family.



Local Amenities

Nearest Airport	Geneva (87 km)
-----------------	-------------------

Nearest Piste	Princess (650 m)
Nearest Ski Lift	650 (650 m)
Nearest Ski Hire	Skimium (750 m)
Nearest Village	Megeve (0 m)
Nearest Restaurant	Restaurant L'hivernal (600 m)
Nearest Bar/Pub	La Cave Des 2 Seigneur (1.7 km)
Nearest Supermarket	Casino Supermarché (1.9 km)
Nearest Train Station	Saint-Gervais-les-Bains-Le Fayet (12.7 km)

What we love

- We loved the spacious and luxurious interior of Chalet Les Saules
- The whole group enjoyed making use of the chalet's sauna and wellness areas
- The dormitory bedroom with a mix of double and single beds was perfect for families with younger children

What you should know...

- The chalet's bedrooms are not all situated on the same floor
- A handy ski locker is provided to store your equipment, ensuring your living spaces stay dry and clutter-free
- All the bedrooms feature ensuite bathrooms for your convenience

Terms & Conditions

- **Security deposit:** €20000 paid via bank transfer to the owner 30 days before arrival and refunded two weeks after departure, subject to full inspection.
- **Arrival time:** Check-in 5.00 PM.
- **Departure time:** Check-out 10.00 AM.
- **Energy costs included?:** Yes, included in the rental price.
- **Linen & towels included?:** Yes, included in the rental price.
- **Pets welcome?:** Not allowed.
- **Changeover day:** Saturday.
- **End of stay cleaning available?:** Yes, included in the rental price. However, guests are required to leave the accommodation clean, tidy and in the same condition as on their arrival. Any extra cleaning, laundry, maintenance and/or garbage disposal required will be charged against the security deposit.
- **Smoking Allowed?:** Smoking & Vaping are not permitted.
- **Minimum stay:** 7 nights.
- **Heating costs included?:** Yes, included in the rental price.
- **Tax:** French Visitors Tax payable alongside balance (typically costs €1-€5 per adult per night- please enquire if exact amount is required).
- **Internet access?:** Wi-Fi internet access included.