

# Manoir Boutonniere

Region: Aquitaine Sleeps: 16

---

## Overview

A short stroll from the shops, restaurants and weekly market, Manoir Boutonniere is a historic house set in large grounds in a traditional Gironde village in the Bordeaux wine region, only a 20-minute drive from the beautiful vineyards of Saint-Émilion.

It feels like a step back in time as you enter Manoir Boutonniere via its impressive hallway with wonderfully tiled flooring and panelled walls. Wander through to the traditional salon and elegant dining room with its decorative fireplace and bar before kicking back in the TV lounge and reading room. A study allows you to work from home if you need to whilst the kitchen is fantastically equipped with modern appliances for family feasts using delicious seasonal produce from nearby colourful markets.

There are four spacious double bedrooms on the first floor, all with king or super king-size double beds and en suite bathrooms, whilst the top floor is home to four further doubles and two new bathrooms. Gather with friends outside to enjoy a bottle of Pomerol's finest vintage as you relax in the garden with seating areas to the front and rear. Furthermore, after a round of boules, the summer house is a delightful spot for al-fresco meals on warm summer evenings.

Open the gated grounds and you are in the heart of the village opposite the church with a small supermarket, a highly regarded bakery, butchers, wine maker and several restaurants alongside a Friday morning market. You can visit Bordeaux, Périgueux and Libourne by train from the village's station just a 15-minute walk away. For lazy days closer to home, stroll to the open-air swimming pool open on most afternoons in July and August, only 500m away near the banks of the River Isle.



Within a 20-minute drive, embrace the beauty of Saint-Émilion with its rich heritage, underground catacombs and incredible vineyards which are classified as a UNESCO World Heritage site. The wineries of Pomerol are also a short distance by car and even closer are the atmospheric markets of Coutras and Saint-Seurin-sur-l'Isle.

Experience the Sunday morning market in Libourne, enjoy a wealth of water-based activities by Lac des Dagueys and canoe along the Isle River near Montpon-Ménéstérol. As well as spending the day in Bordeaux with its magnificent architecture, vibrant restaurant scene and wine-bars, soak up the heritage of Bergerac and take a river cruise along the Dordogne, one of the many beautiful rivers in this part of south-western France.

## Facilities

Watersports • Weddings • Cycling • Tennis Nearby • Historical Sites • Canoeing/Kayaking • Horse Riding • Walking/Hiking Paths • Walk to Village • Ideal for Kids • Wine Tasting • Fishing • Golf Nearby • Great Value • Cots (Cribs) • Dry Hire Option • Licensed for Marriage • Marquee Hire Permitted • Manor • Pets on Request • Ideal for Teens • Chef/Cook Available • Outdoor Ceremony • Flexible Catering Options • <1hr to Airport • Walk to Restaurant • Allow Ceremonial Fire • Wi-Fi/Internet • Allow External Caterers • No Corkage • Indoor Reception Available • Nearby Church/Chapel • Coffee Machine • Outstanding Landscapes • Outdoor Pursuit & Activities • Tourist Towns & Villages • Table Tennis • Laptop Friendly Workspace • Dishwasher • Smart TV • Heating • Wine-Tasting Available • Board games • Boules/Petanque • Ideal for Babies & Toddlers • High Chair(s)

# Interior & Grounds

## Manoir Interiors

### Ground Floor

- Formal salon
- Dining room with decorative fireplace and bar
- TV lounge and reading room
- Study with desk, computer and printer
- Kitchen, well-equipped including range cooker, fridge-freezer, coffee machine, KitchenAid food processor/mixer and pasta maker. Small dining area
- Shower room

### First Floor

- Bedroom with super king-size double bed and en suite bathroom
- Bedroom with super king-size double bed and en suite bathroom
- Bedroom with king-size double bed and en suite bathroom
- Bedroom with king-size double bed and en suite bathroom
- Extra guest bathroom

### Second Floor

- Bedroom with king-size double bed
- Bedroom with double bed
- Bedroom with double bed
- Bedroom with double bed
- 2 x bathrooms (shared between bedrooms)

## Outside Grounds

- Summer house
- Barbecue
- Outdoor seating area (at front and rear)
- Boules
- Garden
- Outbuildings



- Gated/walled grounds

## **Facilities**

- Wi-Fi
- Heating
- Smart TV (55")
- Bar (with fine liquers)
- Board games
- Boules
- Table tennis

## Location & Local Information

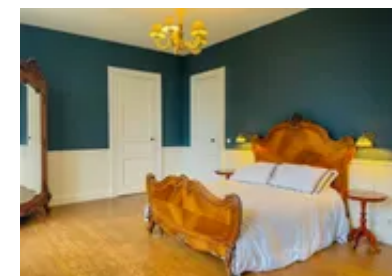
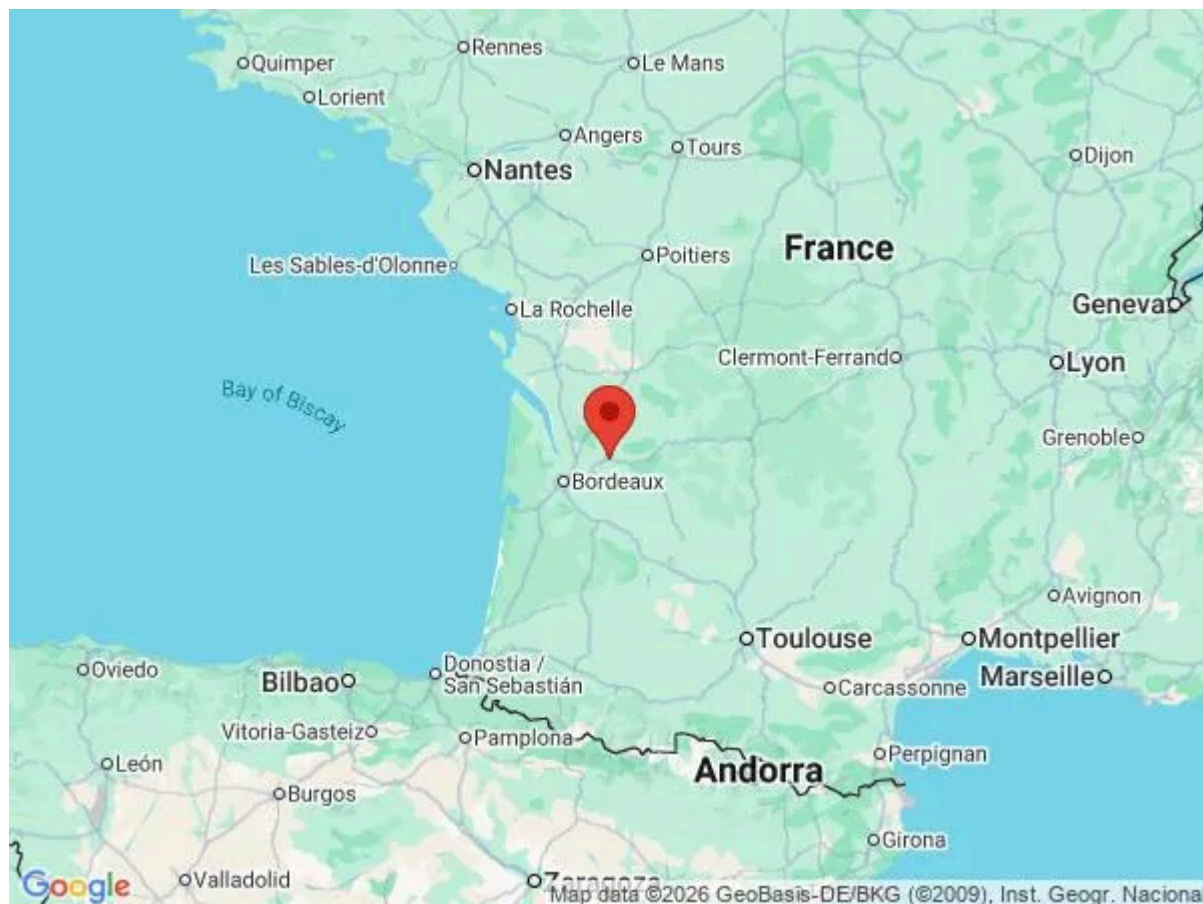
Manoir Boutonniere is located in a traditional Gironde village around an hour north-east of Bordeaux, only 17km from Saint-Émilion. If not driving, fly into Bordeaux or Bergerac Airports, both just under an hour away by car, or arrive via the village train station which is a 15-minute walk away (with connections to Bordeaux Saint Jean for the TGV service to Paris Montparnasse).

Within walking distance you will find a highly regarded *boulangerie* alongside a supermarket, some good restaurants and pizzerias, a butchers and a local winemaker where you can sample wine. The village's weekly market takes place on a Friday morning.

There is a park just a few minutes away on foot and an open-air swimming pool (open Tuesday to Sunday afternoons in July and August only) not far from the banks of the Isle River. Just down the road is a small amusement park with all sorts of activities that families will love.

In the heart of the Bordeaux wine region, a short distance from the vineyards of Pomerol (17km), there are many excellent vineyards and renowned restaurants across this part of south-western France. Embrace the beauty of the French countryside by following hiking or cycling trails and canoe along the Isle River near the riverside town of Montpon-Ménéstérol (17km). Water-lovers can spend time by Lac des Nauves (9km) and Lac des Dagueys (20km) just north of Libourne with a variety of seasonal lakeside activities and watersports.

Saint-Émilion (18km) is one of the main highlights of the region, a beautiful hilltop town with a rich heritage surrounded by vineyards that are classified as a UNESCO World Heritage Site. The old town dates back to pre-historic times and as you stroll around you can admire Romanesque churches, pretty squares and fascinating underground catacombs. As well as its incredible vineyards, you will find many wonderful restaurants in and around Saint-Émilion.



Keen gastronomes should also visit the restaurants and lively Sunday morning market in Libourne (20km), one of the Gironde's largest markets which takes place in the historic centre, or head to the colourful indoor market (three mornings a week). The twice-weekly market in Coutras (9km) is a popular event, as are the *gourmand* markets and other festivities that take place in the summer months. Another market that is worthy of a visit takes place in Saint-Seurin-sur-l'Isle (5km) on a Sunday morning, a great way to stock up on a wealth of delicious produce.

Bordeaux (62km) is a grand day out, only a 40-minute train journey from the village station, with its wine bars, vibrant restaurant scene, museums, historic buildings and riverside setting. Trains from the station also depart in the opposite direction towards the historic city of Périgueux (84km), taking less than 45 minutes.

Discover the banks of the Dordogne River near the historic market towns of Castillon-la-Bataille (23km) and Sainte-Foy-la-Grande (40km) or drive as far as Bergerac (52km) where you can take a river cruise on a traditional gabarre vessel as well as admire the town's rich heritage and wineries.

## Local Amenities

Nearest Airport	<b>Bordeaux Airport (68km)</b>
Nearest Airport 2	<b>Bergerac Airport (70km)</b>
Nearest Beach	<b>Lacanau (119km)</b>
Nearest Golf	<b>Grand Saint-Emilion Golf Club (18.5km)</b>
Nearest Restaurant	<b>In the village (Witin 100m)</b>
Nearest Shop	<b>Bakery, butchers and other shops (Short walk)</b>
Nearest Supermarket	<b>(Within 300m)</b>

Nearest Tennis	<b>Just outside the village (500m)</b>
Nearest Town	<b>Coutras/Montpon-Ménéstérol (9km/17km)</b>
Nearest Train Station	<b>Village train station (1km)</b>

---

## What we love

- Staying at this elegant *manoir* in the Bordeaux wine region feels like a step back in time to a bygone era, just a 20-minute drive from Saint-Émilion
- In a traditional village, stroll to wonderful restaurants, a highly regarded bakery, supermarket, a wine maker and a colourful market on a Friday morning
- Sit outside with a glass of Pomerol's finest wine and enjoy al-fresco dining in the summer house
- Soak up the ambience of other weekly markets in nearby Saint-Seurin-sur-l'Isle, Coutras and Libourne
- Spend the day in Bordeaux or Périgueux – there are direct trains from the village's station just a 15-minute walk away

## What you should know...

- The village has a good range of amenities within walking distance and there are regular departures from its train station towards Bordeaux or Périgueux (as well as buses to Libourne). However, a car is still recommended to be able to fully appreciate this wonderful region.

# Terms & Conditions

- **Security deposit:** £1500 charged to client's credit card as a pre-authorisation at least 2 weeks prior to arrival and refunded two weeks after departure, subject to full inspection.
- **Arrival time:** 4.00 p.m.
- **Departure time:** 11.00 a.m.
- **Energy costs included?:** Yes.
- **Linen & towels included?:** Yes.
- **Pets welcome?:** On request only and with prior agreement with the owner.
- **Other Ts and Cs:** One cot and one highchair can be requested. <br> Weddings, stag/hen parties and any special events are on request only and subject to prior arrangement with the owner and additional charges.
- **Changeover day:** Flexible (excluding Saturday check-ins which are not possible).
- **End of stay cleaning:** Extra £450, payable to Oliver's Travels with the balance payment. Guests are required to leave the accommodation clean, tidy and in the same condition as on their arrival. Any extra cleaning, laundry, maintenance and/or rubbish disposal required will be charged against the security deposit.
- **Smoking Allowed?:** No.
- **Minimum stay:** 7 from May to September. 5 nights during all other periods.
- **Heating costs included?:** Yes.
- **Tax:** French Visitors Tax included.